

# Making a MyLO WebDAV connection with Dreamweaver

## Step-by-step guide for designers


For Blackboard Vista 4.x

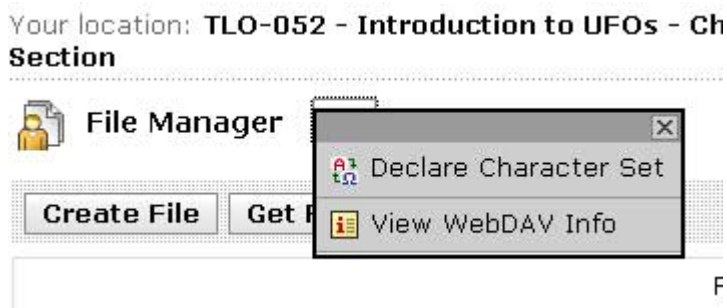
### Defining the MyLO folder location

In **MyLO** we need to define the location of the folder to which we want to make the connection. To do this, follow the steps below.

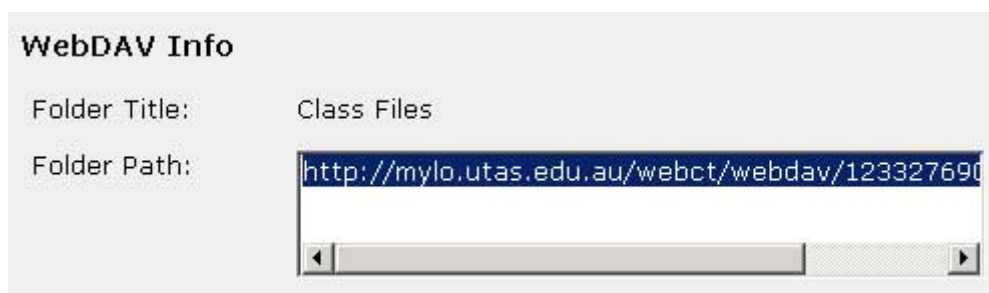
1. Login to **MyLO**.
2. Navigate to the course that you would like to make the WebDAV connection to.
3. On the **Build** tab for the respective course select **File Manager** under **Designer Tools**.



4. In the main content area of the page select the *ActionLinks*  icon next to **File Manager**, as shown below



5. Select **View WebDAV Info** from the drop-down menu. The WebDAV information will be displayed as shown below.

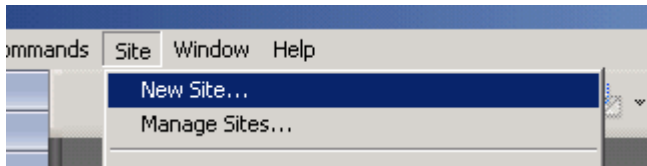


6. Copy the highlighted **Folder Path** information. This information will be used in the next step – DreamWeaver Setup

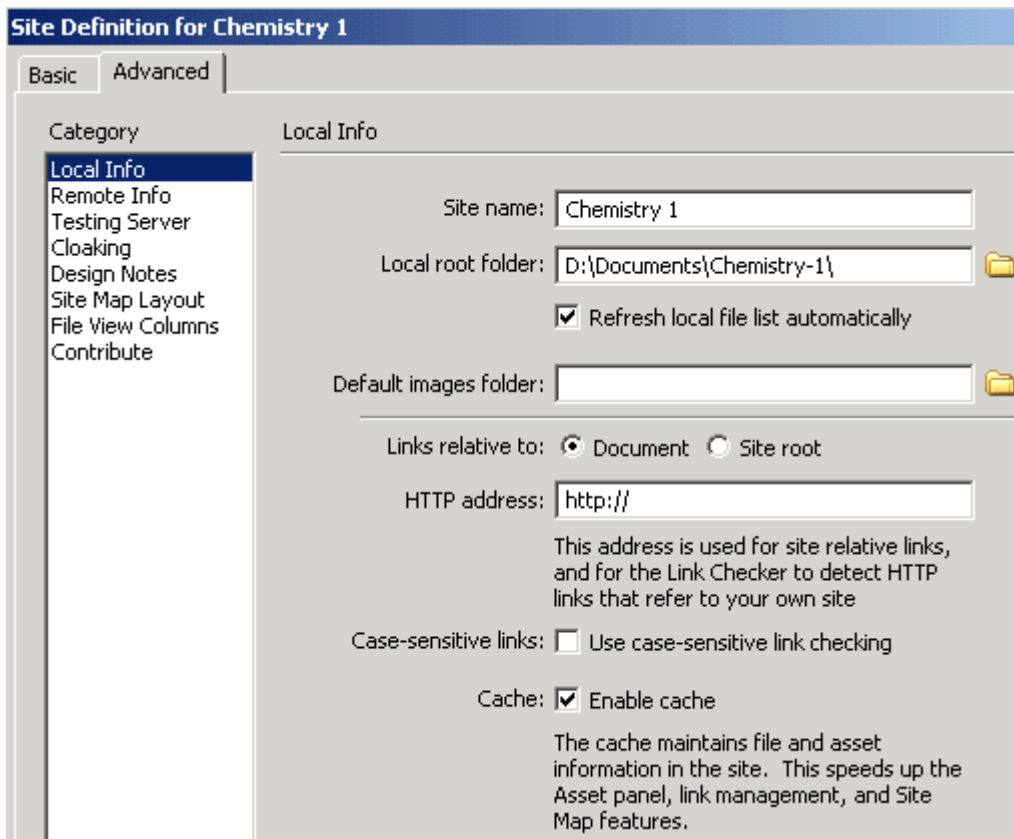
## Dreamweaver Setup

Open Dreamweaver and then do the following:

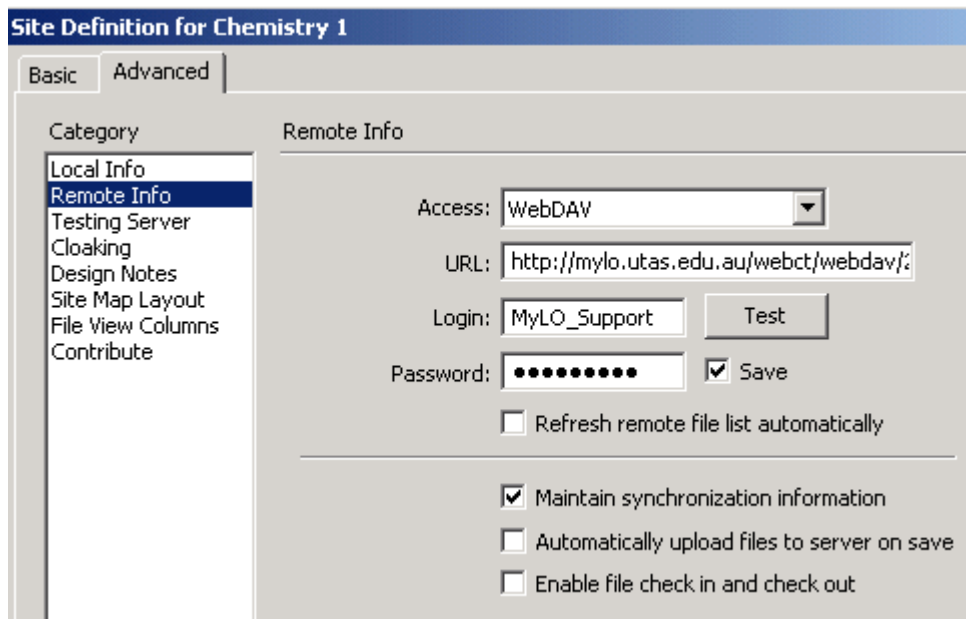
1. From the **Site** menu select **New Site...**



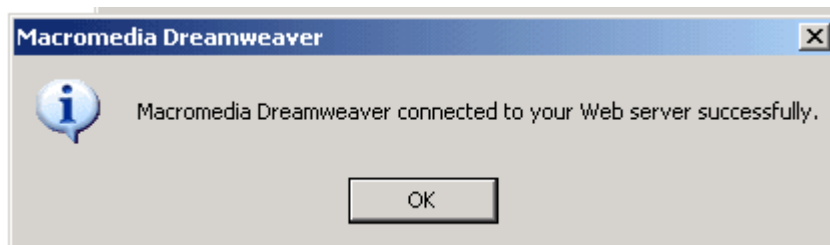
2. In the **Site Definition** window select the **Advanced** tab



3. Enter a name for the site e.g. Chemistry 1
4. Enter the local root folder e.g. D:\Documents\Chemistry-1\
5. From the left hand side menu under **Category**, select **Remote Info**



6. From the **Access:** dropdown menu, select WebDAV.
7. In the **URL:** field enter the Folder Path information you copied in Step 6 of **Defining the MyLO folder location**.
8. Your login and password details are the same as those used when logging into MyLO.
9. Click **Test**, if you have entered in all the information correctly you will get the following message

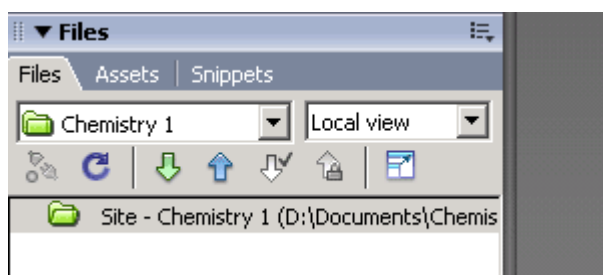


10. Click **OK**.

## Copy/Synchronize your MyLO files

In Dreamweaver do the following:

1. Select the **green arrow** (Get) to copy your **MyLO** files to the designated folder on your local computer



## Making a MyLO WebDAV connection with Dreamweaver

---

2. After editing files in the local directory of the **MyLO** site, select the **blue arrow** to upload (put) the files on your local computer to your **MyLO** files.
  - a. Be aware that this will overwrite files on the **MyLO** server, this could be an issue if other people are also editing and uploading files.
  - b. Always adhere to a version control policy if you want to track changes/updates to your learning resources

**Note:** Some staff have experienced problems with Dreamweaver 9 and WebDAV.

There is a fix available for Dreamweaver at this website:

<http://kb.adobe.com/selfservice/viewContent.do?externalId=kb402079&sliceId=1>.

### References:

Designer and Instructor Reference: Application Pack 2 for Blackboard Learning System – Vista Enterprise License (Release 4) 2006 Blackboard Inc

Vista 4.2 Online Help (Blackboard Inc.)

Blackboard Vista and other product names are either registered trademarks or trademarks of Blackboard Inc.

#402    v 1.0    mylo\_webdav\_dw.doc    01/12/2010