

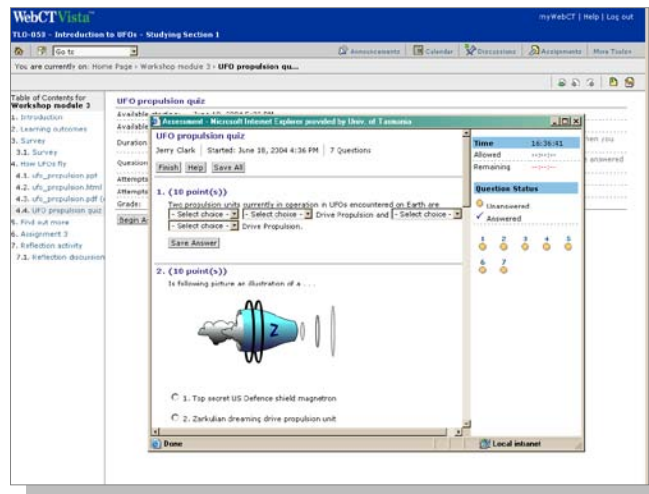
Introduction to assessment online

An online module for staff

Introduction to assessment online takes an introductory look at the assessment tools that are often used for teaching and learning online.

The module will help you to:

- Explore the range of assessment possibilities online, and the tools available in Vista
- Construct assessment tasks online
- Manage the release, processing and grading of assessment tasks
- Be aware of the main issues/limitations associated with online assessment
- Plan some simple strategies to introduce online assessment, and prepare students.



Structure and format

The module is available online through Vista. After you register you will have ongoing access to the module and a sample course. You can access these resources at any time and undertake learning at your own pace.

On successful completion you can self-assess your learning using a checklist, which can be used for teaching portfolios etc.

This module is part of the **Teaching Online Essentials** program.

How long does it take?

The module takes between 90-120 minutes to complete, depending on pathways chosen.

Learning requirements

Prerequisites

You will need to have basic competence in using a computer and a web-browser. You will also find it useful to have worked through the modules: **Introduction to teaching and learning online**, **Exploring the Student View in MyLO**, **Preparing for teaching online**, **Exploring the Teach View in MyLO** and **Exploring the Build View in MyLO** (if wanting to design assessment tasks).

Participant requirements

You will need a computer with network/Internet access and you must be a current UTAS staff member to access the learning management system.

Who is the module suitable for?

Teachers/designers who want to use online assessment tools as part of their overall assessment strategy.

How to register

Access the registration webpage at [Teaching & Learning Online](#) and register in the module titled **Introduction to assessment online**.

Further enquiries

Contact CALT – call x3504, or email: training@calt.utas.edu.au