

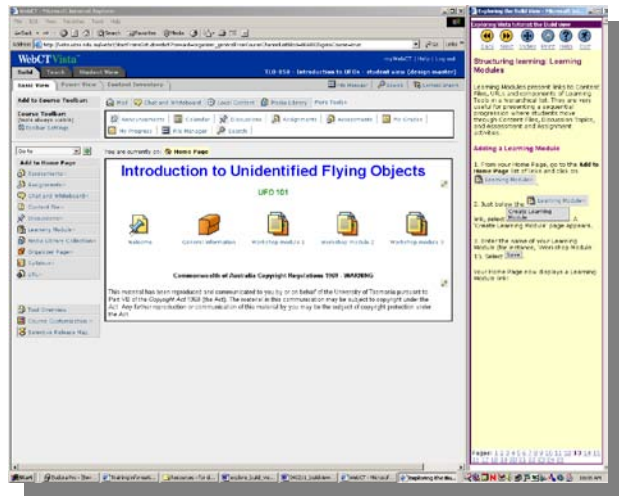
# Exploring the build view in MyLO

## An online module for staff

**Exploring the Build View in MyLO** is an online module that guides you through the design and development of an online educational environment.

The module will help you to:

- Build an online educational environment
- Write and prioritise a basic list of educational goals for an online educational environment, incorporating teaching and learning needs
- Plan and design an online educational environment to achieve your educational goals, making use of the available resources.



## Structure and format

The module is available online. After you register you will have ongoing access to the module and a sample course. You can access these resources at any time and undertake learning at your own pace.

On successful completion you can assess your own learning using a checklist, which can be used for teaching portfolios etc.

This module is part of the **Teaching Online Essentials** program.

## How long does it take?

The module takes approximately 120 minutes to complete.

## Learning requirements

### Prerequisites

Basic competence in using a computer and a web-browser.

You will also find it useful to have worked through the modules: Introduction to teaching and learning online, **Exploring the student view in MyLO**, **Preparing for teaching online** and **Exploring the teach view in MyLO**.

### Participant requirements

You will need a computer with network/Internet access and you must be a current UTAS staff member to access the learning management system.

### Who is the module suitable for?

This module is for staff considering developing online educational resources.

### How to register

Access the registration webpage at [Teaching & Learning Online](#) and register in the module titled **Exploring the build view in MyLO**.

### Further enquiries

Contact CALT – call x3504, or email: [training@calt.utas.edu.au](mailto:training@calt.utas.edu.au)