

Exploring the teach view in MyLO

An online module for staff

Exploring the teach view in MyLO is an online module that guides you through the **MyLO** interface that teachers/instructors use ('Teach view'). Most of the module is taken up with an exploratory Teach View tutorial.

The module will help you to:

- understand the complementary roles of designer & instructor
- navigate around the Teach view interface
- use a variety of instructor-specific tools to manage content, activities and students.

Structure and format

The module is available online through Vista. After you register you will have ongoing access to the module and a sample course. You can access these resources at any time and undertake learning at your own pace.

On successful completion you can self-assess your learning using a checklist, which can be used for teaching portfolios etc.

This module is part of the **Teaching Online Essentials** program.

How long does it take?

The module takes approximately 90 minutes to complete.

Learning requirements

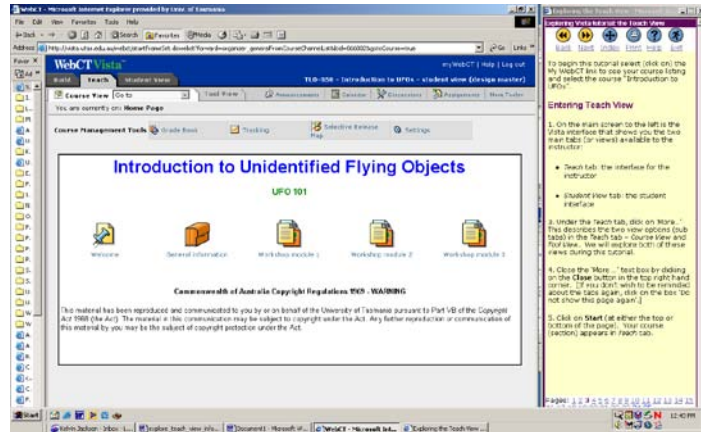
Prerequisites

- Basic competence in using a computer and a web-browser.
- Prior completion of **Teaching Online Essentials** is highly recommended.

Participant requirements

A computer with network/Internet access.

You must be a current UTAS staff member to be able to access the learning management system.



Who is the module suitable for?

Staff who are:

- new to online teaching, or
- changing from another learning management system.

How to register

Access the registration webpage at [Teaching & Learning Online](#) and register in the module titled **Exploring the teach view in MyLO**.

Further enquiries

Contact CALT – call x3504, or email: training@calt.utas.edu.au