

Current Contents Connect (ISI)

Accessing Current Contents on Web of Knowledge

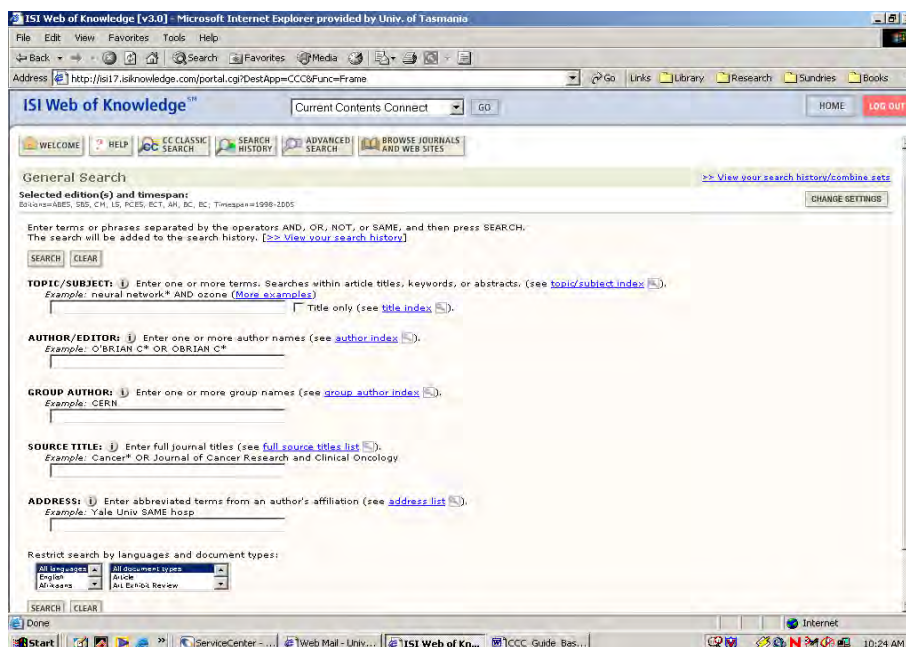
From the Library's Homepage at <http://www.utas.edu.au/library>

- Select **Databases** from the menu on the left.
- Select **C** from the alphabetical list of databases.
- Scroll and select **Current Contents Connect (ISI)** from the list of databases.
- You will need to provide your University of Tasmania email name and password.

From the Web of Knowledge homepage:

- Select **Current Contents Connect** from the list on the left of the page.
- Opens the Current Contents homepage.
- If required, make changes to the **editions and time-span** limits.
- Click on the **General Search** button.

This opens the **General Search** page.



Searching for references in Current Contents

If you are using an **Author(s)**, **Source** or **Address** search it is essential to check the **Indexes** for the correct wording.

- For a **Topic/Subject** search enter search terms or phrases in the top box. (See **Search Strategies** below for more help with combining terms, etc.)
- Click on the **Search** button.
- This will open a list of **brief citations** for the results records.
- Click on the underlined **title** of an item to view the full record.

Editing searches and combing search results

- Click on the **General Search** button at the top of the screen to edit your search.
- Click on the **Search History** button to combine searches.
- You can combine searches using **AND** or **OR**. (See **Search Strategies** below)

Search strategies

Effective searches strategies are essential for finding relevant references on your topic. The search operators below will help in combining terms for your topic.

Boolean Operators:

Use	To
AND	Narrow search and retrieve records containing <i>all</i> of the words it separates.
OR	Broaden search and retrieve records containing <i>any</i> of the words it separates.

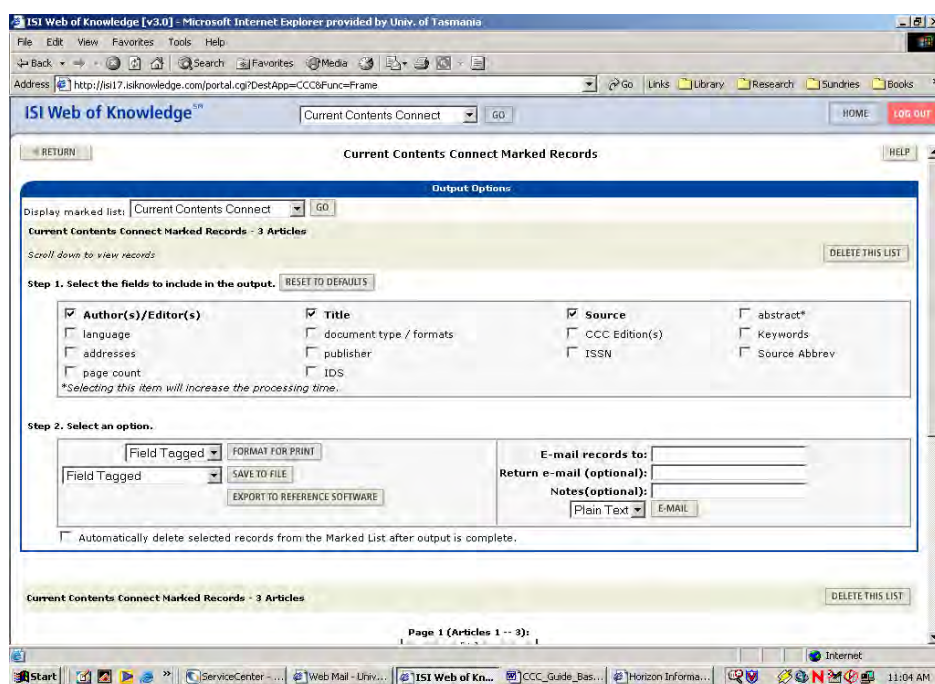
Wildcard Symbols:

Use	To
*	To represent any number of characters, including no characters. For example: <ul style="list-style-type: none">▪ behav* matches <i>behaviour, behavior, behavioural, etc.</i>▪ Jones H* (in an Author/Editor search) also matches <i>Jones HB; Jones Henry.</i>
?	To represent any single character. For example: <ul style="list-style-type: none">▪ wom?n matches <i>woman</i> and <i>women.</i>▪ organi?ation matches <i>organization</i> and <i>organisation.</i>

NB. Use brackets () to combine groups of words or phrases and to show the order terms should be searched. eg. (**welfare policy or welfare reform**) and **australia***

Printing, Saving and Exporting records

- **Mark** the citations that you want to **print/save/export** with a tick in the left box.
- Click on **Submit** button on right. - Marks must be updated on each results screen.
- Click on the **Marked List** button at the top of the screen.
- Options for formatting and saving the records are on the **Marked Records** page.
- Select the **Fields** to be included in the records.
- **Printing** - Select format with or with out the field names. (Author, title, source)
- **Email** - Select Plain Text or html and fill in Email details.
- You may **Export** records directly into **EndNote**. (See EndNote help sheet)



Use the **Return** button at the top left to exit this page

Saving search strategies/histories and alerts

- Click on the **Search History** button at the top of the page.
- To save the search(s), click on **Save History** button.
- First you need to register with ISI by providing your e-mail address and a password.

There are 3 options on the **Save Search History** page.

1. You can save your search(s) on the ISI server to be run by you from any computer.
2. You can set up an **E-mail Alert** for ISI to run the search at the top of your list.
3. You can save the search to your own computer without registering with ISI.

To save the search history on the ISI server

After entering your password details the **Server Save** page opens.

- Fill in the **History Name** with a recognisable title. – Required.
- Fill in a **Description**. – Optional.
- Click on the **Save** button.

To save the search history as an Alert

After entering your password details the **Server Save** page opens.

- Fill in the **History Name** with a recognisable title. – Required.
- Fill in a **Description**. – Optional.
- Tick the **Send Me Email Alerts** box.
- Provide an **email address**.
- **Alert Type** – Select the format for the email record details.
- Select an **Email format**.
- Select **Email frequency**. – Either daily, weekly or monthly.
- Click on the **Save** button.

NB Your search strategy will be automatically run against additions to the database and the results emailed to you. Alerts expire after 24 weeks, but may be renewed.

Use the Current Contents Help

Current Contents provides very useful Help screens that relate to the screen or function that you are currently using.