

Installing CAPS Printing on OSX

Requirements

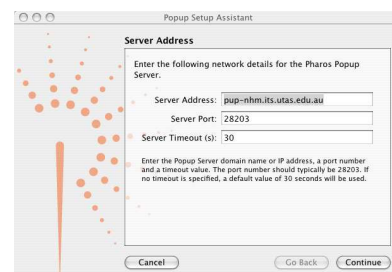
Software: <http://caps.its.utas.edu.au>
 OS: OSX 10.3 "Panther", 10.4 "Tiger"

Installing

- 1 Download *popup.dmg* and *notify.dmg* from <http://caps.its.utas.edu.au>. While on the web site, locate the print queue you wish to use and note both the queue name and the server it is on.
- 2 Mount the disk image *popup.dmg* by double-clicking it, and run *Popup.pkg*.
- 3 Click *Continue*, *Continue*, *Continue*. Select the startup disk as the destination volume, and click *Install*.
- 4 If given a lock prompt, authenticate as an administrator.
- 5 *Popup Setup Assistant* will ask for a *Server Address*. Look up the Server you noted from step 1 in the table below, and specify the matching *Server Address*. Make a note of the *Server Address*, because it will be used again later.

Server	Server Address
PUP-ART	pup-art.arthbt.utas.edu.au
PUP-INV	pup-inv.its.utas.edu.au
PUP-NHM	pup-nhm.its.utas.edu.au
PUP-NWC	pup-nwc.its.utas.edu.au
PUP-SBY	pup-sby.its.utas.edu.au

Leave *Server Port* and *Server Timeout* set as 28203 and 60, and click *Continue*.



- 6 Leave *Client Port* set as 28212, and click *Continue*.
- 7 Leave *Popup* enabled, and click *Continue*, *Done*, then *Close*.
- 8 Mount the disk image *notify.dmg*, and run *Notify.mpkg*.
- 9 Click *Continue*, *Continue*, *Continue*. Select the startup disk as the destination volume, and click *Install*.
- 10 If given a lock prompt, authenticate as an administrator.
- 11 *Notify Setup Assistant* will start. Specify the following:
Database Server Address: pupdb.its.utas.edu.au
Server Port: 2355

Installing CAPS Printing on OSX

Timeout: 60
Click *Continue*.

- 12 Leave *Notify* enabled, and click *Continue*, *Done*, *Close*.
Note: If you ever need to reconfigure *Popup* or *Notify*, the *Setup Assistants* and an *uninstaller* are located under *Hard Disk;Library;Application Support;Pharos;Utilities*.
- 13 Open *Applications*, then *Utilities*, then *Printer Setup Utility*.
- 14 If using OSX 10.3 "Panther":
Hold down *Option*, choose *Printers* from the toolbar, and select *Add Printer* from the pull-down menu.

If using OSX 10.4 "Tiger" or newer:
Click *Add*. Hold down *Option* and click *More Printers*.
- 15 From the very first pull-down menu, choose *Advanced*.
Note: If *Advanced* is not there, go back to the last step and make sure you hold down *Option*.
- 16 From *Device*, select *Pharos Print Server*.
- 17 *Device Name* should be set to the name of the print queue, in all upper case. For example, *LIB-LIB-MML2-Q*.
- 18 *Device URI* is the *Server Address* you noted in step 5, followed by the *LPD queue name*. For example, *popup://pup-sby.its.utas.edu.au/LIB-LIB-MML2-Q*.
- 19 Where possible, leave *Printer Model* as *Generic*. If the printer supports colour or larger than A4 paper, you will need the specific driver for that printer.
- 20 Click *Add*.
- 21 The CAPS printer is ready for use.

Troubleshooting

- Installing while logged in as root seems to work best.
- Any firewall software must be set to allow traffic on ports 2355 and 28201.
- Double-check spelling and uppercase/lower case, especially any hyphens.
- For help with error messages while using CAPS printing, consult the *CAPS User Guide*.

Document control details	
Author:	John Curran
Version number:	4.2
Last modified:	1/03/2007 11:11 AM