

iPassConnect netROAM Software Installation Guide

Requirements

- Authorisation from Computer Support Coordinator x6319 or Team Leader Desktop Management Systems x6321 for new account creations.
- iPassConnect software located in \\sus\guest\NetApps\iPass.

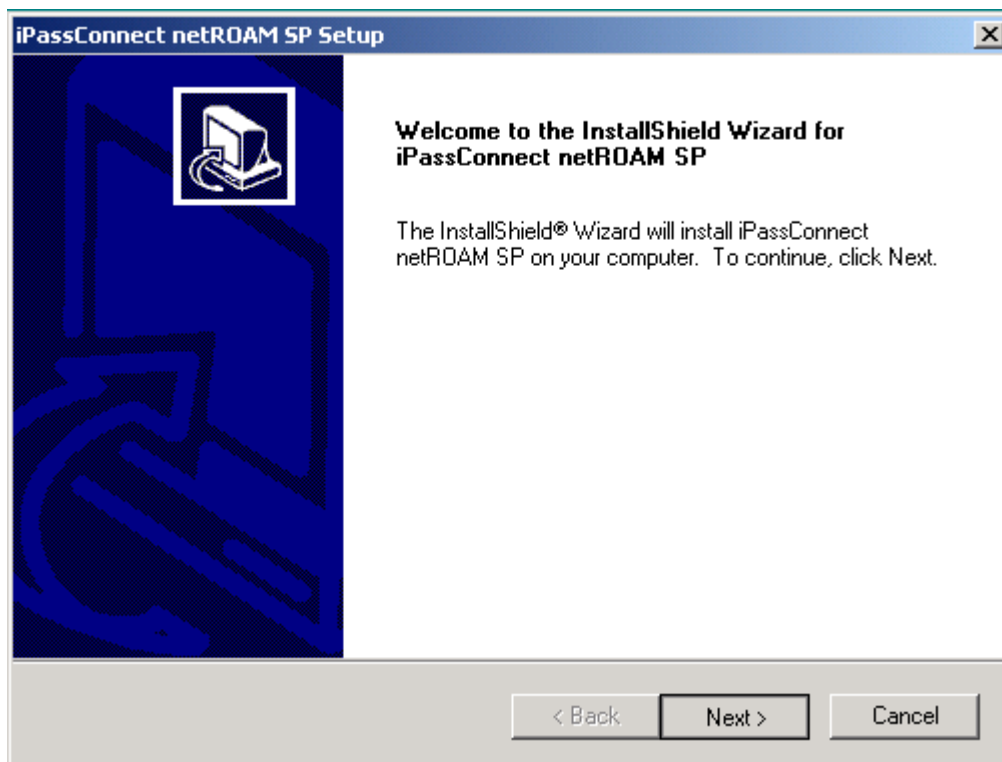
Process

1. Double Click on the “netroam-11573.exe” application icon

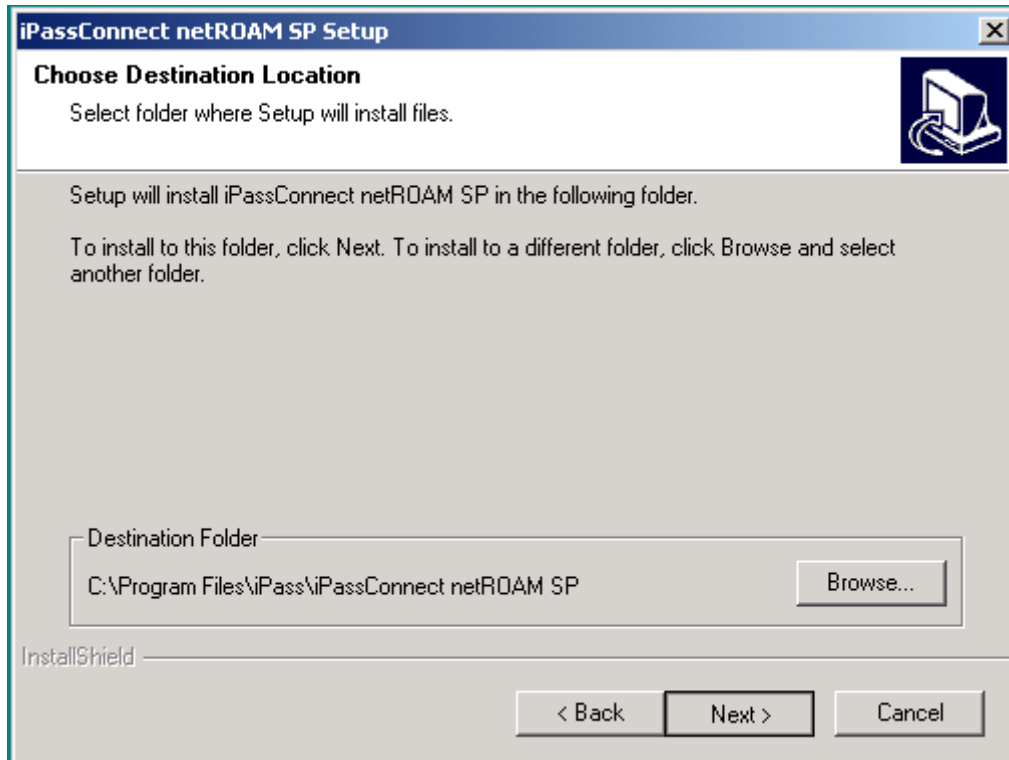


netroam-1157
3.exe

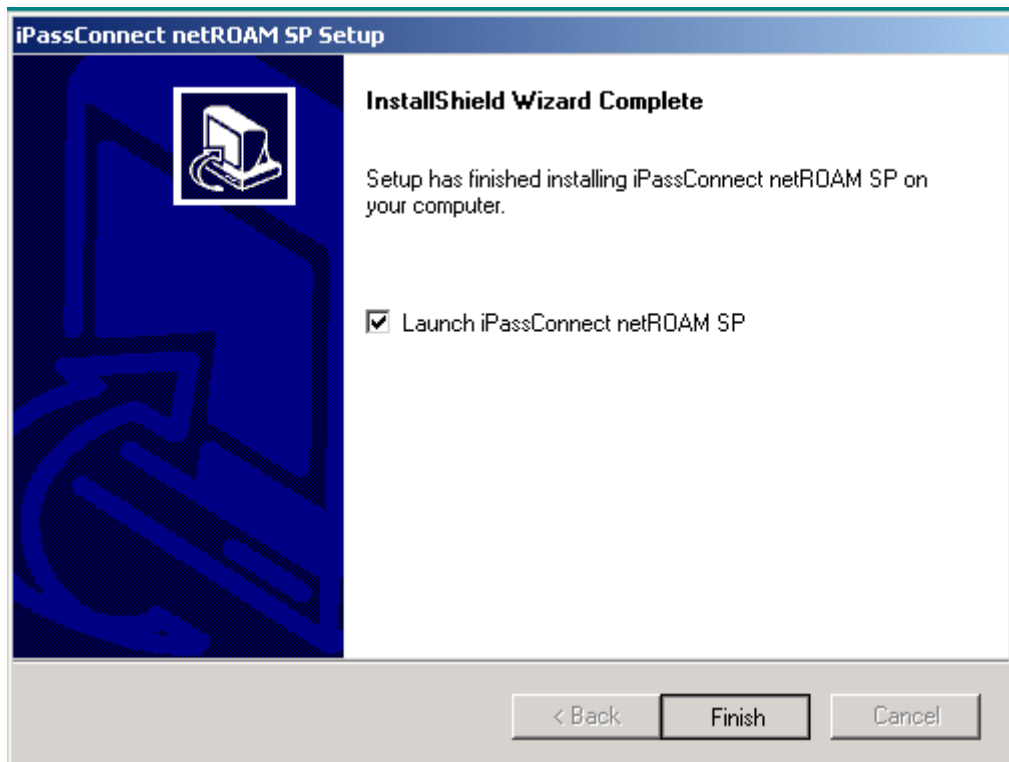
2. Click on the “Next >” button



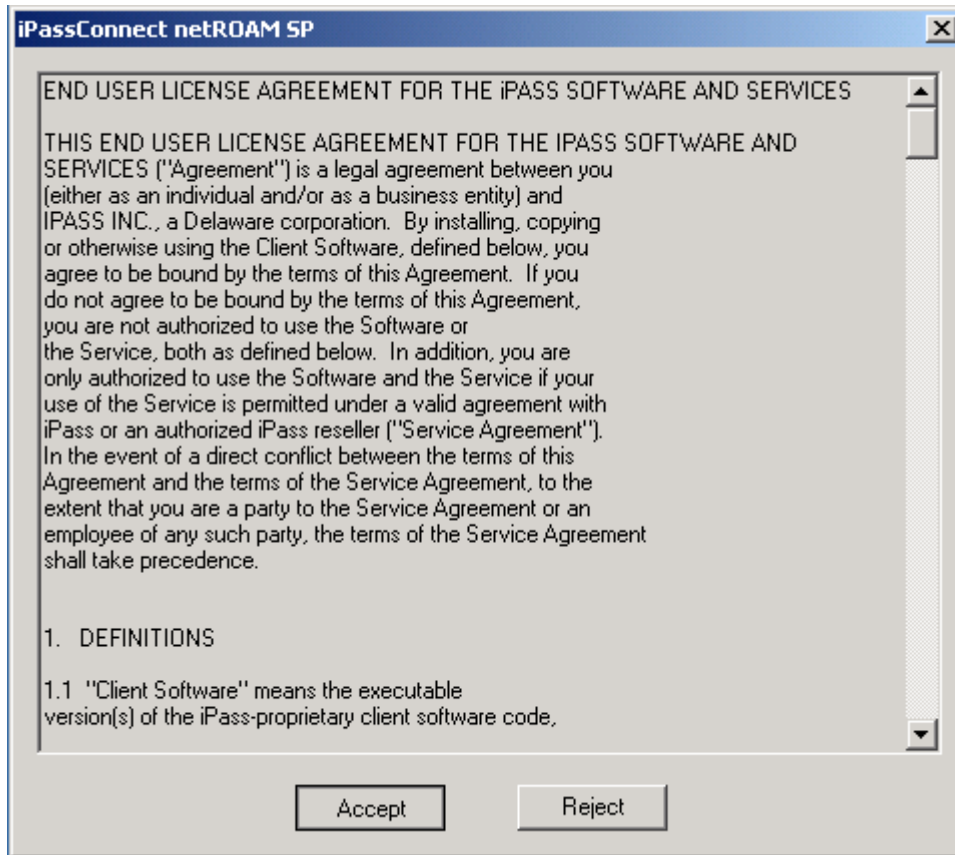
3. Click on the “Next >” button



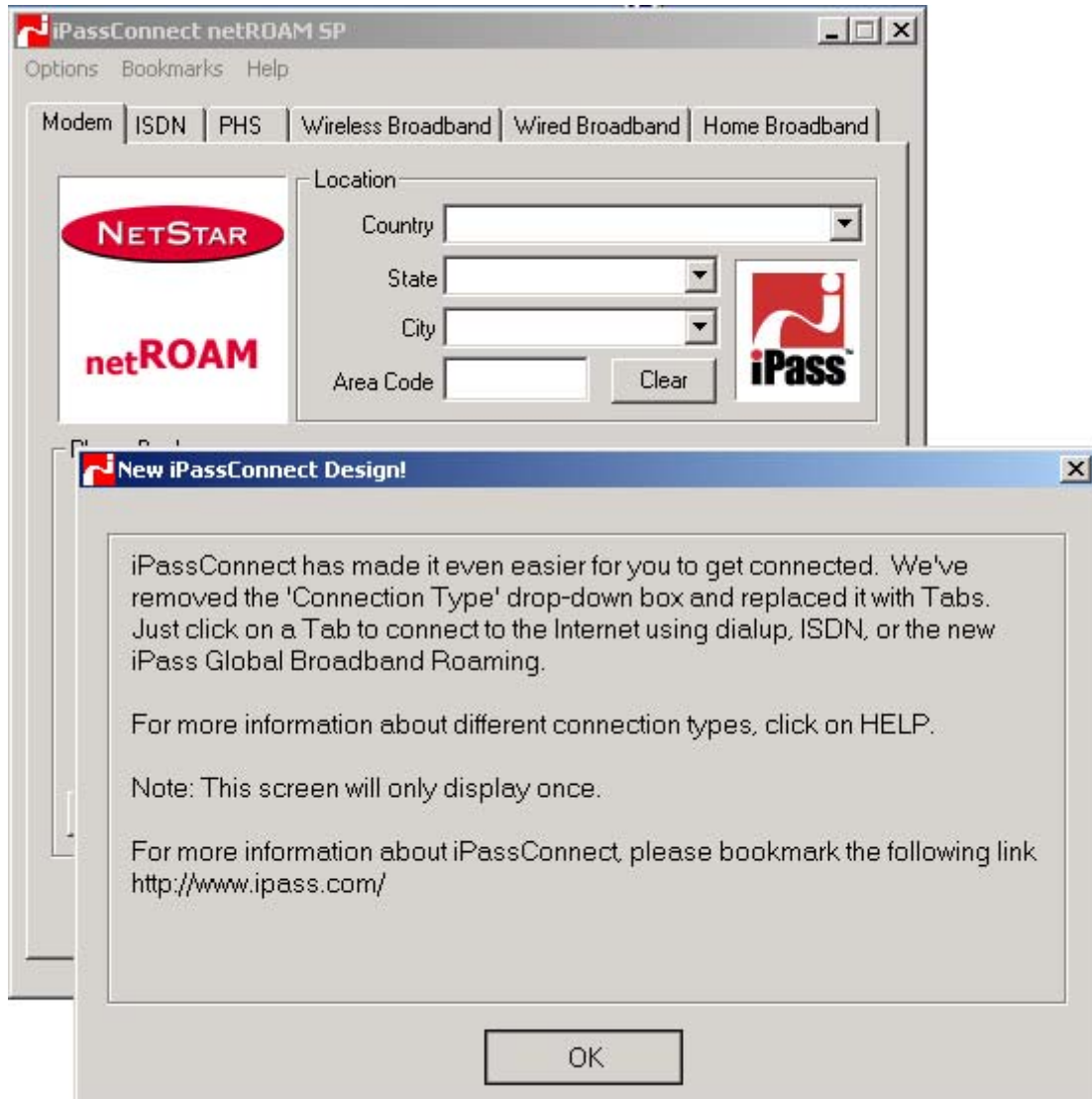
4. Click on the "Finish" Button



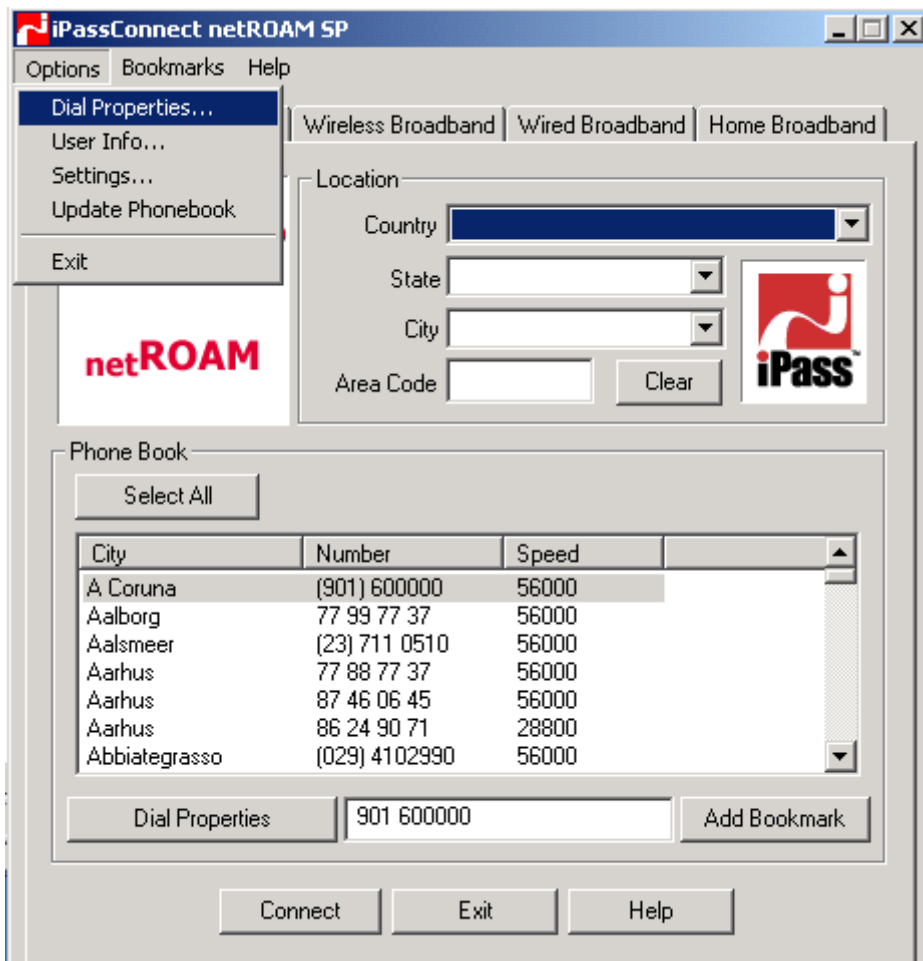
5. Click on the "Accept" button



6. Click on the "OK" button



7. Click on the "Option" menu and select "Dial Properties..."



8. Confirm that “Dial Using” is set to “Tone”

NOTE: Some countries (and some areas within countries) still do not support “Tone” dialling. Many Developing Countries fall into this category. By default, set to Tone. If the dialling fails, attempt “Pulse” setting.

Dial Properties

General

To access outside line dial

To disable call waiting dial

Dial using

Dialing from location

Location same as selected number

Country

Area Code

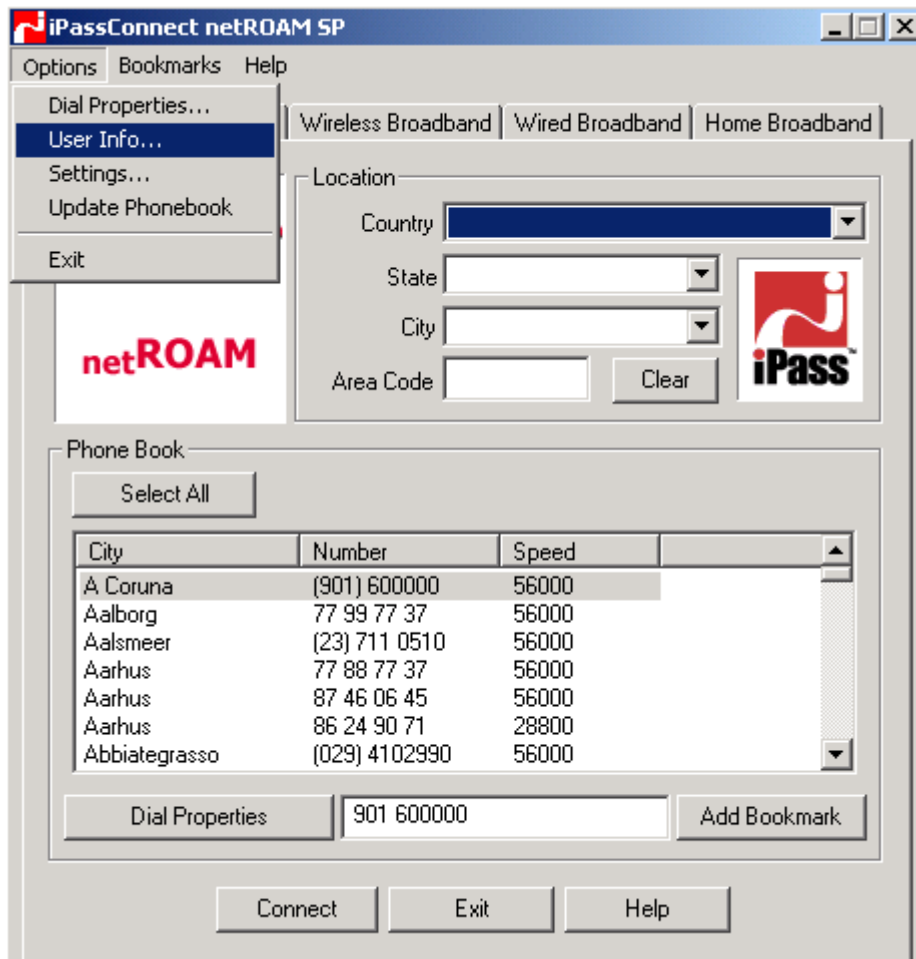
Area Code Rule

Calling Card

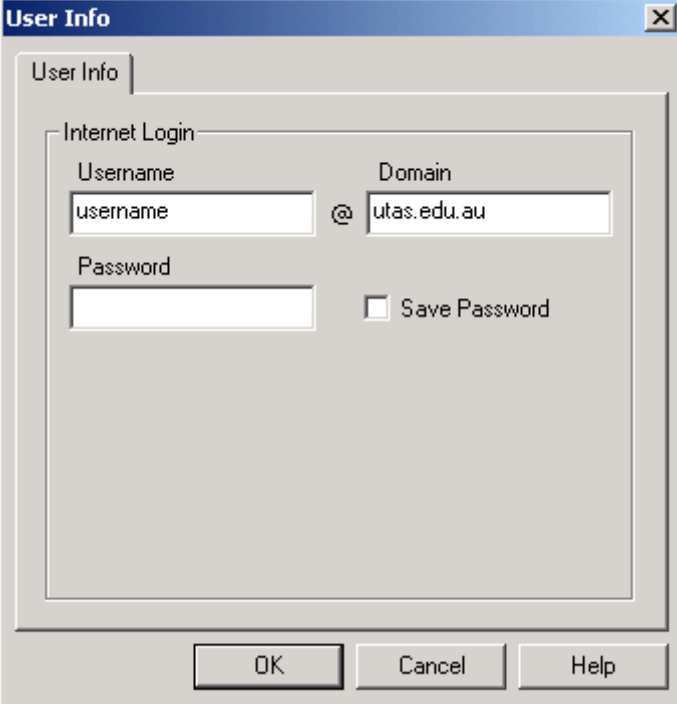
Use calling card

9. Click the “OK” button

10. Click on the "Option" menu and select "User Info..."



11. Enter your "Username" in the designated area in lower case
12. Enter the "Domain" as "utas.edu.au"

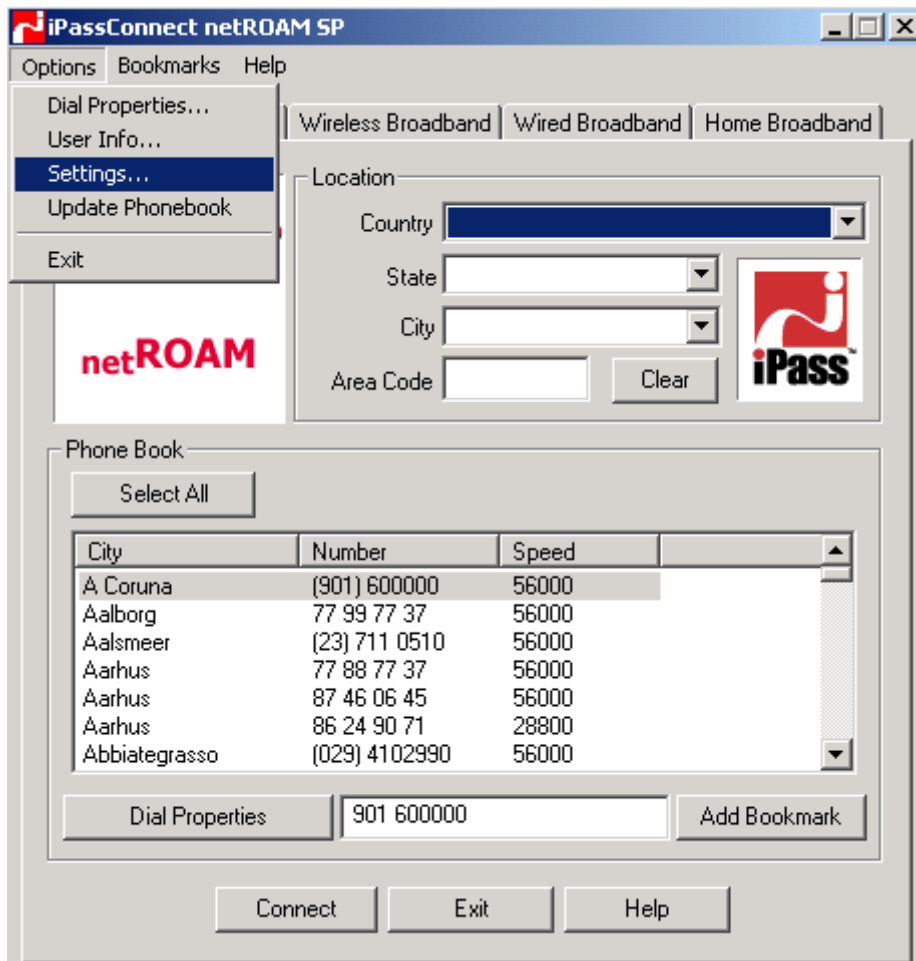


The screenshot shows a "User Info" dialog box with the following fields and controls:

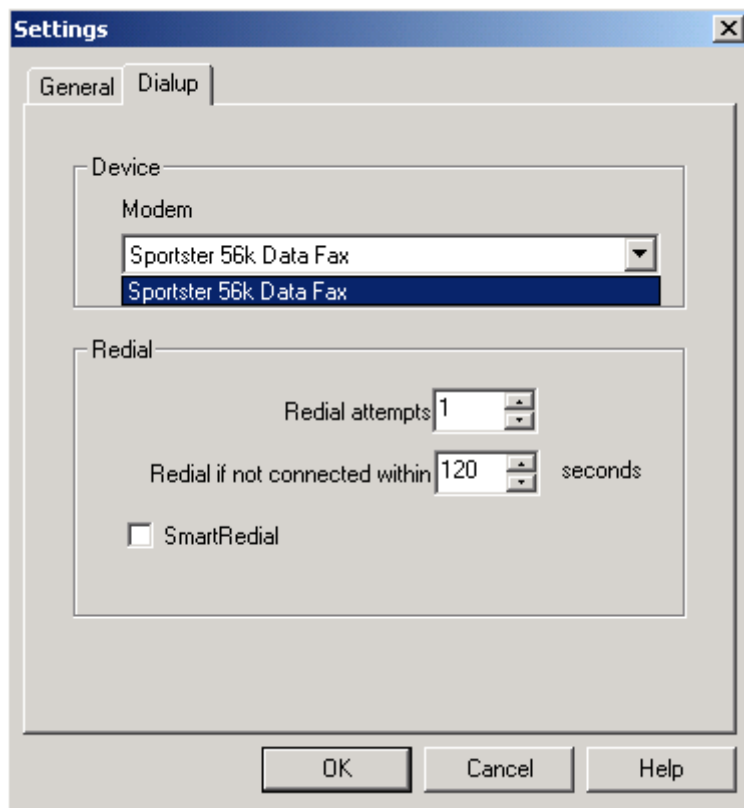
- Username:** A text box containing "username".
- Domain:** A text box containing "utas.edu.au".
- Password:** An empty text box.
- Save Password:** An unchecked checkbox.
- Buttons:** "OK", "Cancel", and "Help" buttons at the bottom.

13. You can save your password by entering your "Password" and clicking within the "Save Password" box, but for security reasons saving your password is not recommended
14. Click "OK"

15. Click on the “Option” menu and select “Settings...”



16. Click on the “Dialup” tab
17. Select a Modem from the drop down box by clicking on the triangle



(The “Sportster 56k Data Fax” modem is an example only)

18. Click on the “OK” button
19. The configuration is now complete, click on the “Exit” button to close the program.

Version control

Document control details	
Author:	Chris Massey
Version number:	1.1
Last modified:	23-03-04
Information custodian	Chris Massey
Status	Current
Expiry date	31-12-04
Next review date	