

UANA – Wired Connections

Nick Sonneveld 11/5/2005



UANA is the University Authenticated Network Access project aimed at providing secure network access for staff and students of the University of Tasmania. Access to the University network can be made via a laptop computer with either a wireless Ethernet card or a wired Ethernet port.

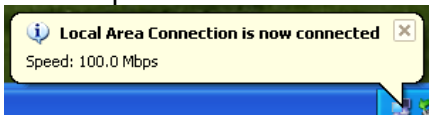
Compatibility

Operating systems: Windows 2000 SP4, Windows XP SP2, Mac OS X 10.3

Other operating systems and versions may work but they are **not supported** by the Service Desk.

Plug in your network cable.

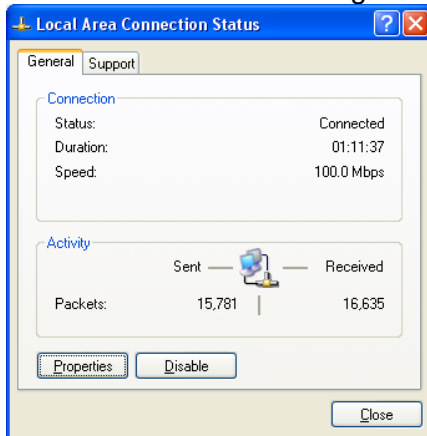
You should get a **balloon** explaining that you are **connected**. If not, then try another port.



Double click on the network icon.



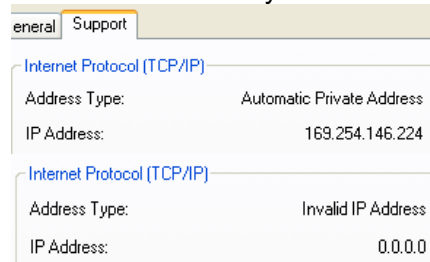
You should get a “Local Area Connection Status” dialog.



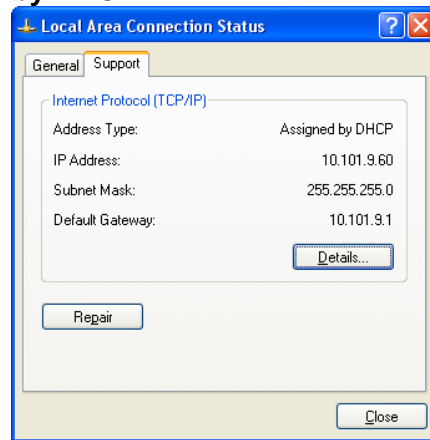
Click on the “Support” tab.

The network needs to realise that your machine is connected. This may take up to **two minutes**.

It may say “Automatic Private Address” or “Invalid IP address” which is NOT what you want.



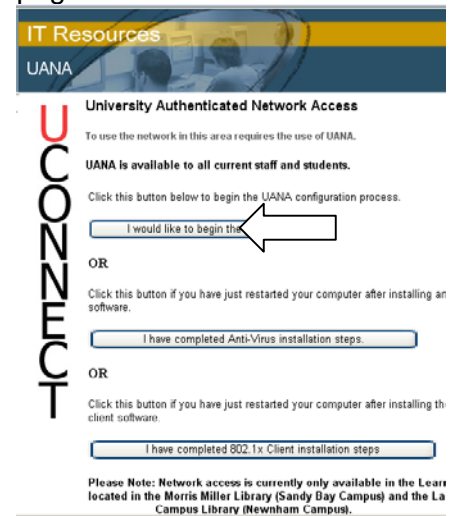
Eventually the “Support” tab will read “Address Type: Assigned by DHCP”



Execute Internet Explorer.

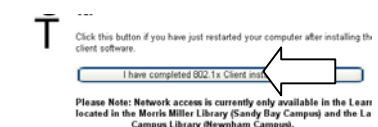


By default, any web request will go straight to the UANA setup page.



Click on the **first button** to start. (“I would like to begin the process”)

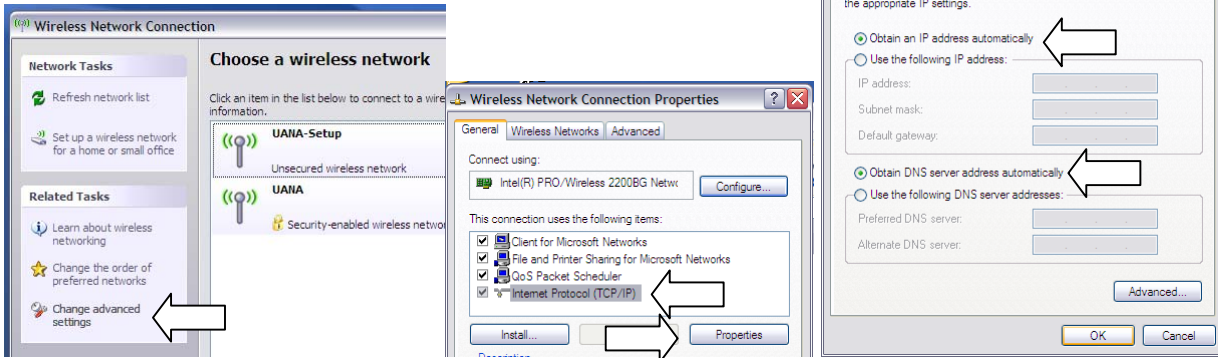
You will need to restart after installing the SecureW2 software. Go back to the setup page and select the **third button** “I have completed 802.1x Client installation steps”



Connection Troubleshooting

Checking Network Address

You need to be allocated an address by the University.
You **must** remove any manually configured addresses.



Checking Proxy Server Settings

Incorrectly set proxy settings may prevent you from loading the UANA setup page. Consider clearing them before the initial setup.

