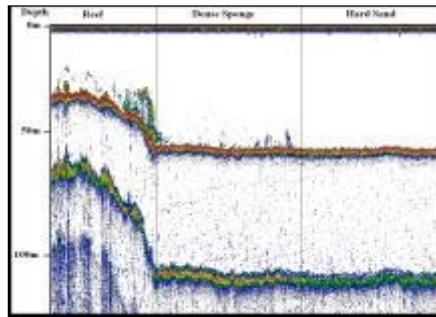


Aerial photographs sourced from archive

Images registered and rectified in ArcInfo

Habitat boundaries identified and digitised . Shapefiles loaded into ArcPad 6.0

Raw acoustics data viewed and attributed in the lab using EchoView software. Tidal corrections made to depth data. Point data outputted as.csv files.



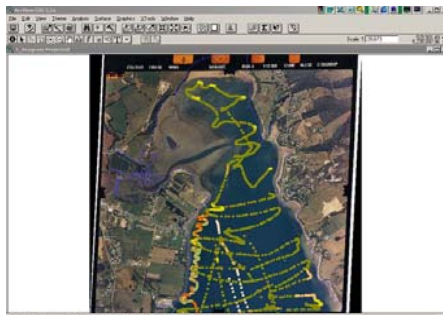
Video data collected to verify acoustic signal and detect boundary position.



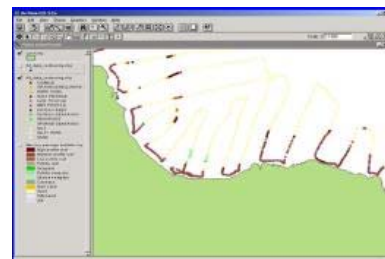
Field data collected using Simrad ES60. Using real-time GPS and ArcPad, boundaries are attempted to be captured by adjusting regular transects



Field data points are overlaid onto registered images.



Similar points connected abiding by decision rules to generate area class maps in ArcView



Polygons crosschecked with video transect data

Habitat maps outputted in RGB JPG format.

