

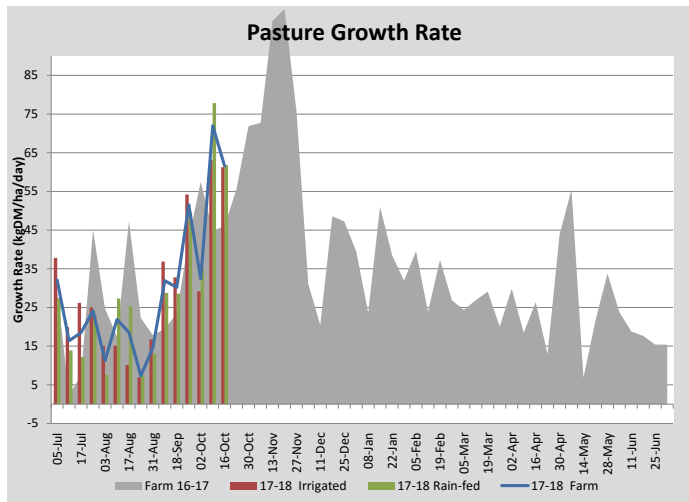
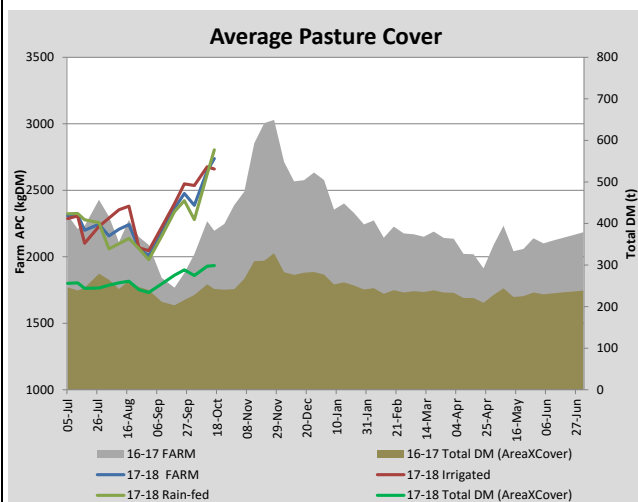
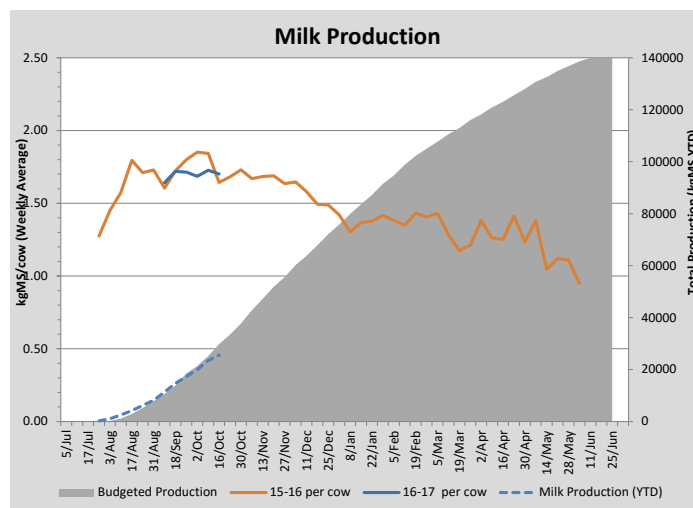
Key Summary Points

- 1** The average pasture cover has continued to increase with silage paddocks waiting to be cut.
- 2** Paddocks have been cultivated for crops and pasture renovation.
- 3** Mating of heifers starts on October 20.

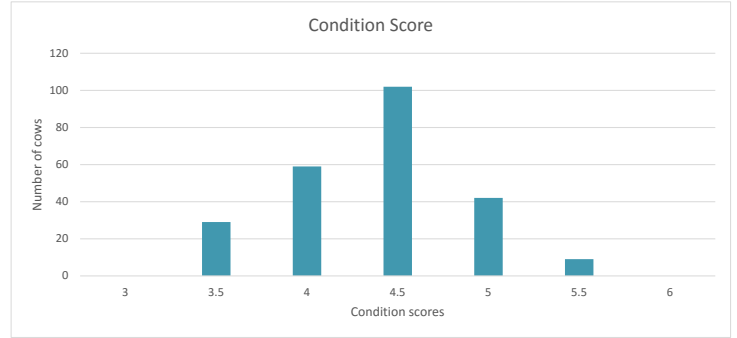
PASTURE INFORMATION	Farm			Irrigated			Rain-fed		
	Last Week	This Week	Variation	Last Week	This Week	Variation	Last Week	This Week	Variation
Grazed milking area (ha)	112.3	109.1	-3.2	40.5	49.5	9.0	68.6	59.7	-9
Rotation Length (days)	37	30	-8	27	23	-4	54	39	-15
Grazing allocation per day (ha)	3.0	3.7	0.7	1.9	2.2	0.3	1.2	1.5	0.4
Average time since last grazed (days)	68	41	-27	65	52	-13	71	32	-39
Leaf appearance rate (days per leaf)	14	13	-1	14	13	-1	14	13	-1
Average Pasture Cover (kgDM/ha)	2645	2739	93	2677	2659	-17	2621	2804	184
Pasture Growth Rate (kgDM/ha/day)	72	62	-10	63	61	-2	78	62	-16
Post Grazing Biomass (kgDM/ha)	1662	1643	-19						
Nitrogen applied YTD (kgN/ha)	8	8	0	0	0	0	0	0	0

*Please note all pasture calculations detailed above are based on the current Grazed Milking Area

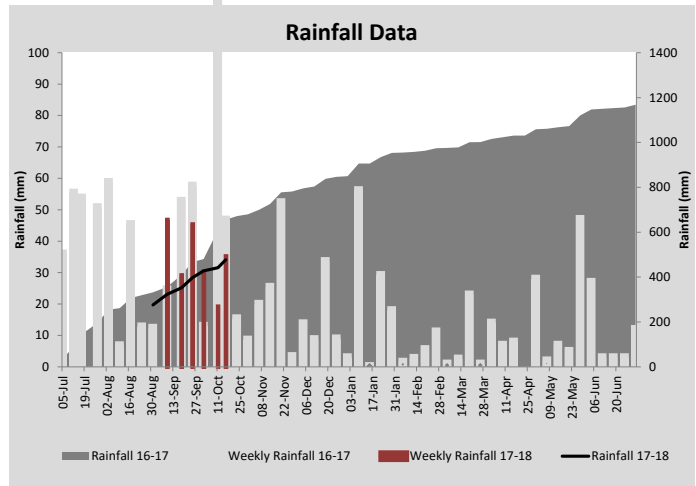
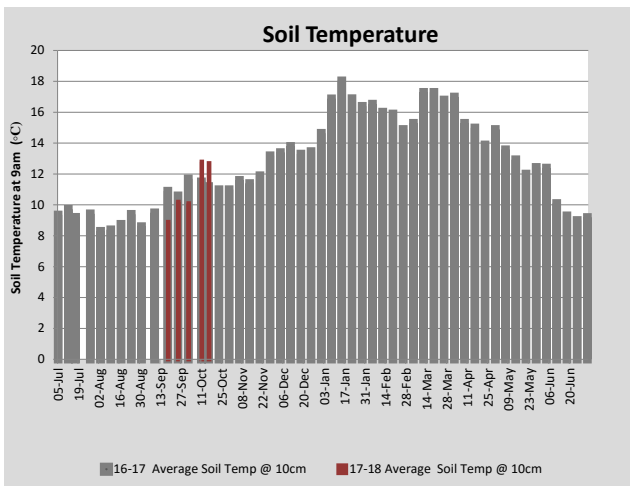
MILK PRODUCTION	Last Week	This Week	Variation
Average No. cows in milk (vat)	300	309	9
Litres per cow	23.5	22.8	-0.7
% Fat	4.04	4.17	0.13
% Protein	3.35	3.23	-0.12
MS/cow/day	1.73	1.70	-0.03
MS/ha/day	4.58	4.65	0.07
BMCC	188,571	185,571	-3,000
Average Liveweight (kg)	0	0	0
	Budget	To Date	Variation
Total Milk Production (kgMS)	29,738	25,555	86%
MS/ha YTD	261	259	99%



Last 7 days					
Milkers Diet	kg DM	MJ ME	CP (%)	NDF (%)	\$/cow
Pasture Intake	16.7	0.0	0.0	0.0	0.0
Concentrates	4.0	0.0	0.0	0.0	0.0
Silage	0.0	0.0	0.0	0.0	0.0
Grazed forage	0.0	0.0	0.0	0.0	0.0
Other feeds	0.0	0.0	0.0	0.0	0.0
Total	20.7				0
Target			16-18	>33	0



The milking herd was condition scored prior to mating start date and had an average score of 4.4. The above graph shows the range.



Analysis			
Expected growth rate next 7 days (kgDM/ha/day)	60	Target Leaf Grazing Stage	2.0-2.5
Total Demand from Pasture (kgDM/ha/day)	32	Predicted APC 7 days time	2932
APC balance (kgDM/ha/day)	28	Predicted APC Change	193.7

Discussion

Pasture growth is still well above cow requirements. The fixed irrigation and centre pivot have been tested and are working ready for irrigation start-up. Paddocks have been cultivated for crops and pasture renovation. Sowing of plantain into existing pasture has also taken place as part of a research project. The milking herd was condition scored recently and has an average condition of 4.4. There was a small group of cows below condition score 4 and where possible, these will be targeted with additional feed. Weaning of calves has begun with a group of 40 calves weaned. Mating of the rising two-year old heifers will begin on October 20.

16 October 2017

