

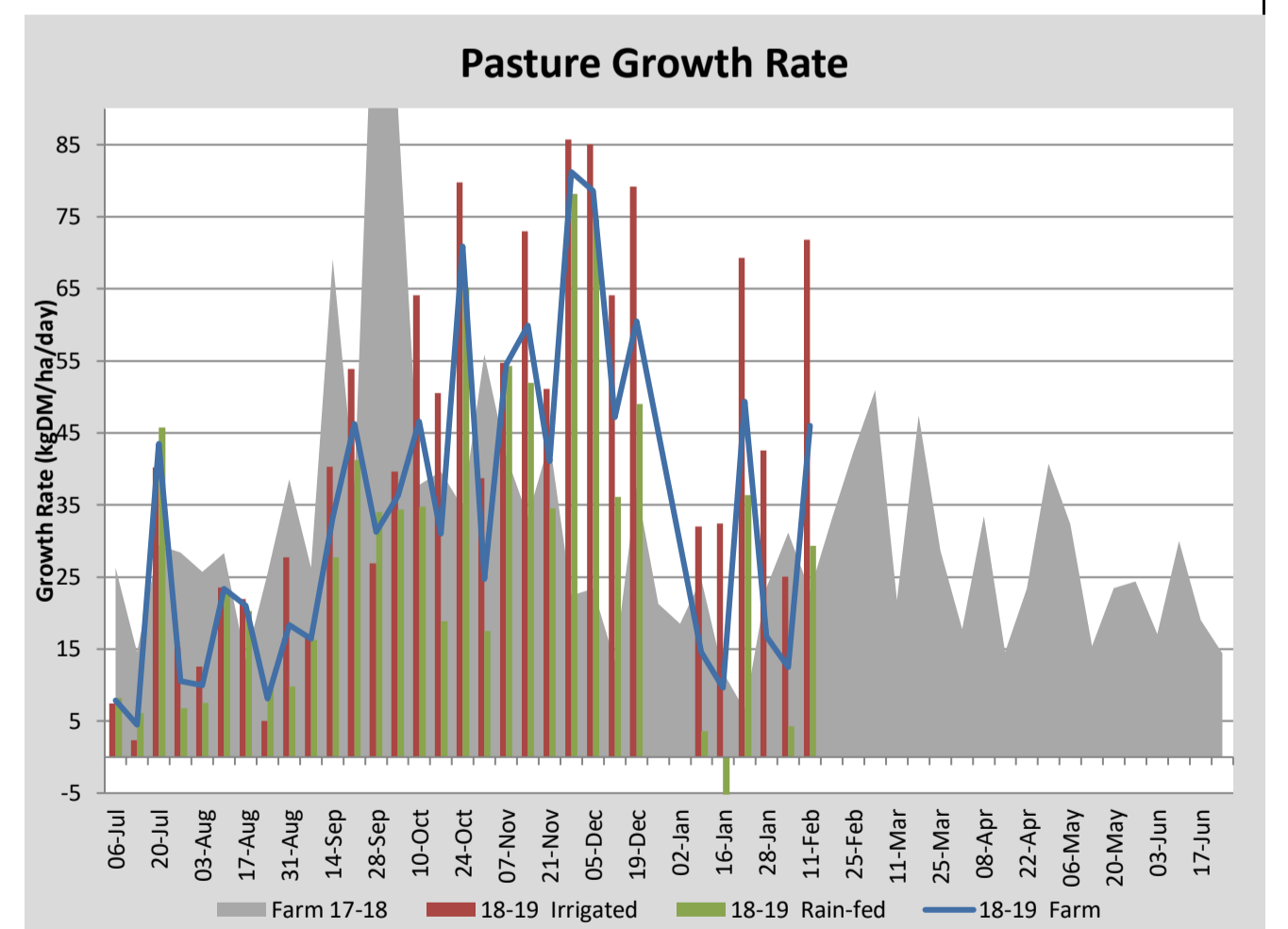
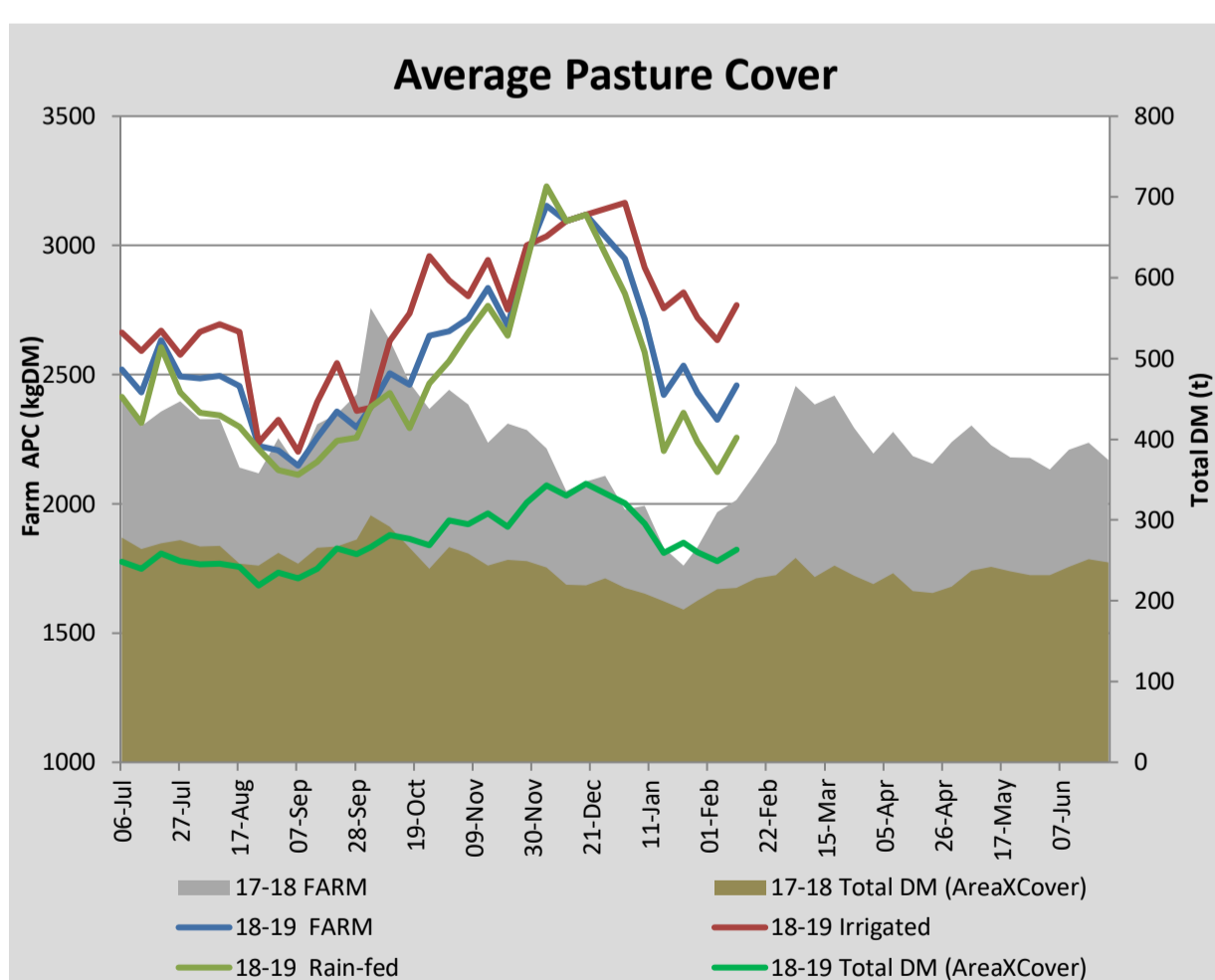
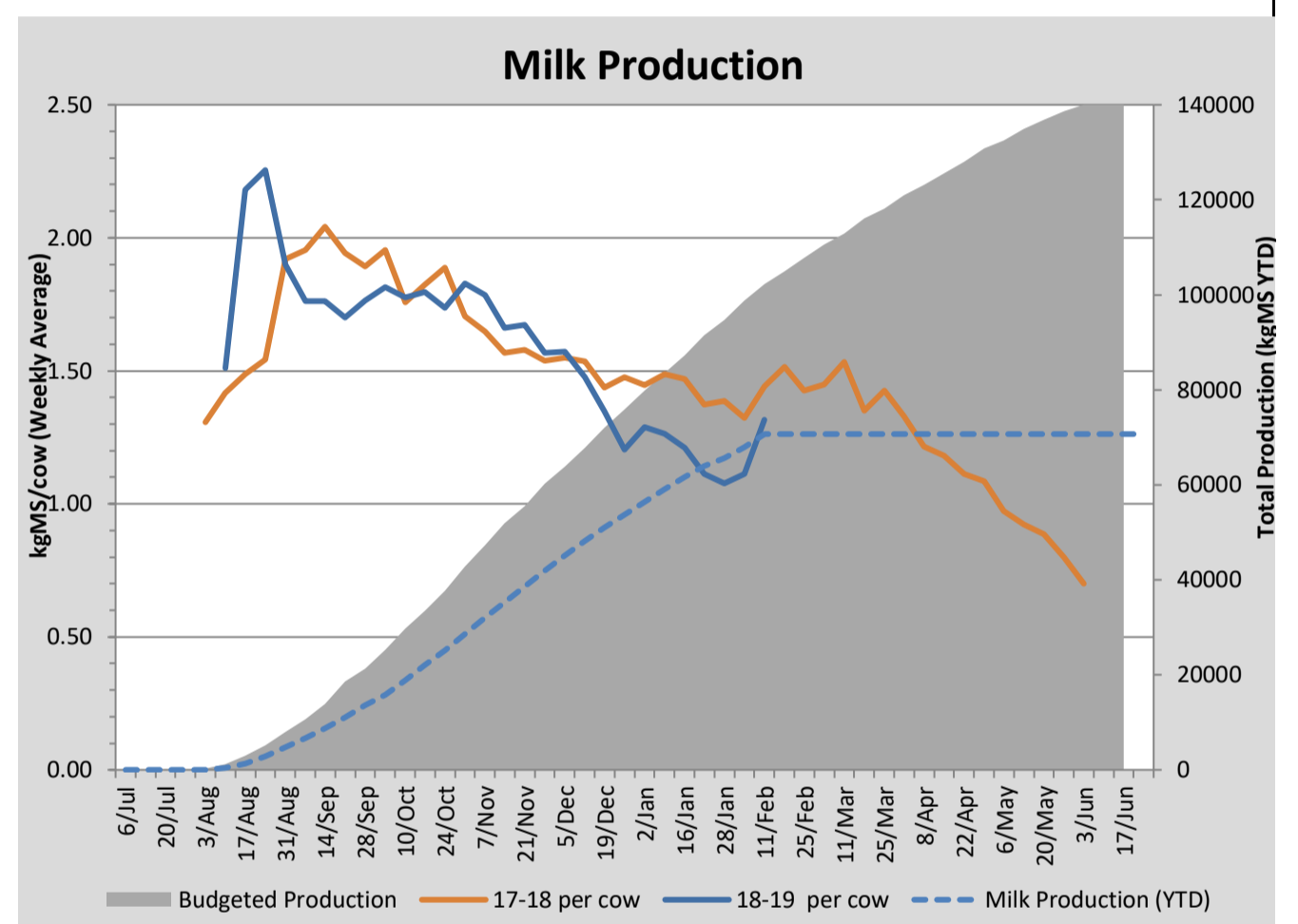
## Key Summary Points

- 1 Milk production has continued to improve.
- 2 Irrigation is turned off due to the rainfall.
- 3 A body condition score camera has been installed at the dairy.

PASTURE INFORMATION	Farm			Irrigated			Rain-fed		
	Last Week	This Week	Variation	Last Week	This Week	Variation	Last Week	This Week	Variation
Grazed milking area (ha)	107.1	107.1	0.0	42.2	42.2	0.0	64.9	64.9	0.0
Leaf appearance rate (days per leaf)	16	15	-1	9	8	-1	20	19	-1
Average Pasture Cover (kgDM/ha)	2324	2458	134	2633	2770	137	2124	2255	132
Pasture Growth Rate (kgDM/ha/day)	12	46	34	25	72	47	4	29	25
Post Grazing Biomass (kgDM/ha)	1526	1844	318						
Nitrogen applied YTD (kgN/ha)	75	75	0	8	0	-8	0	0	0

\*Please note all pasture calculations detailed above are based on the current Grazed Milking Area

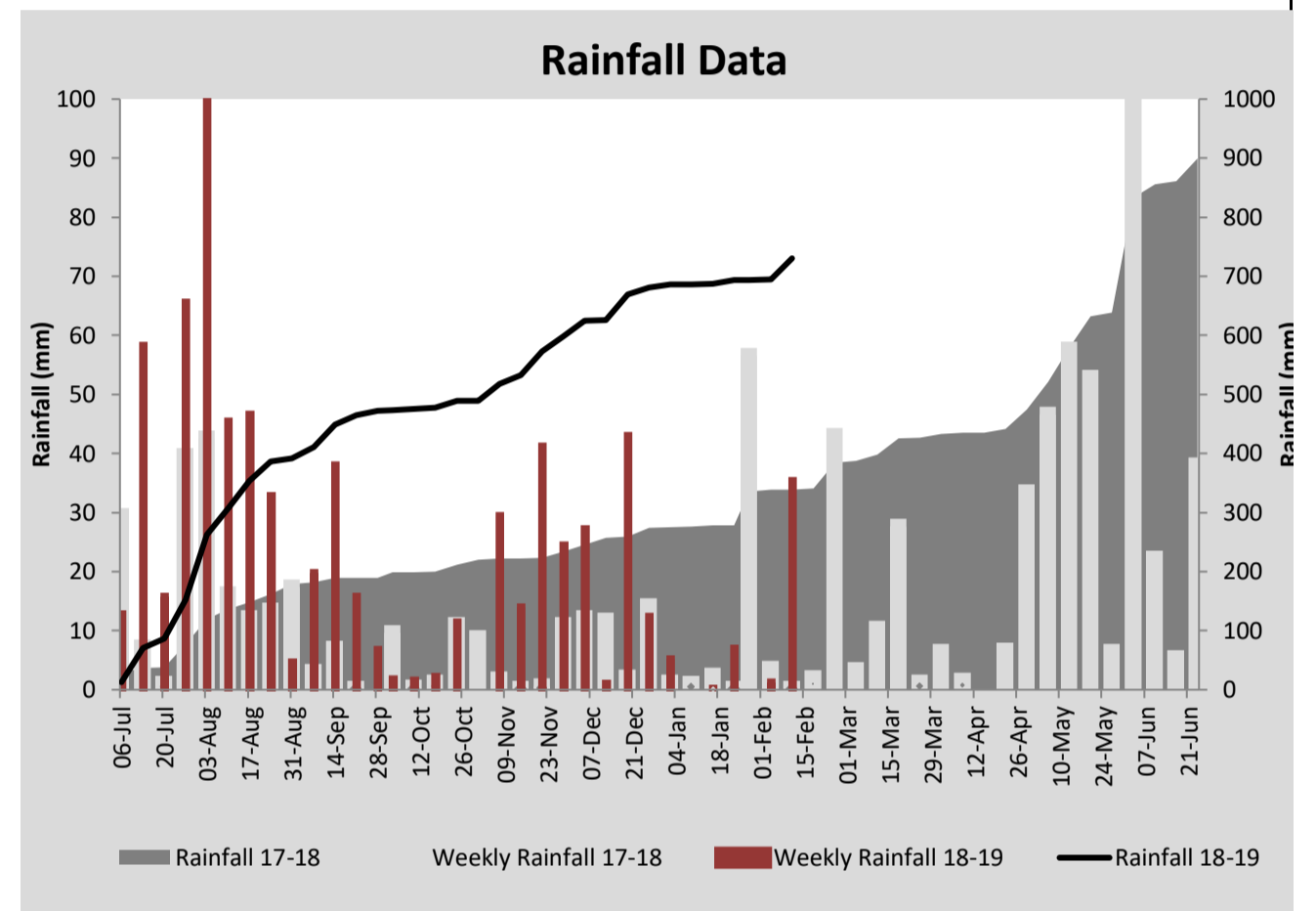
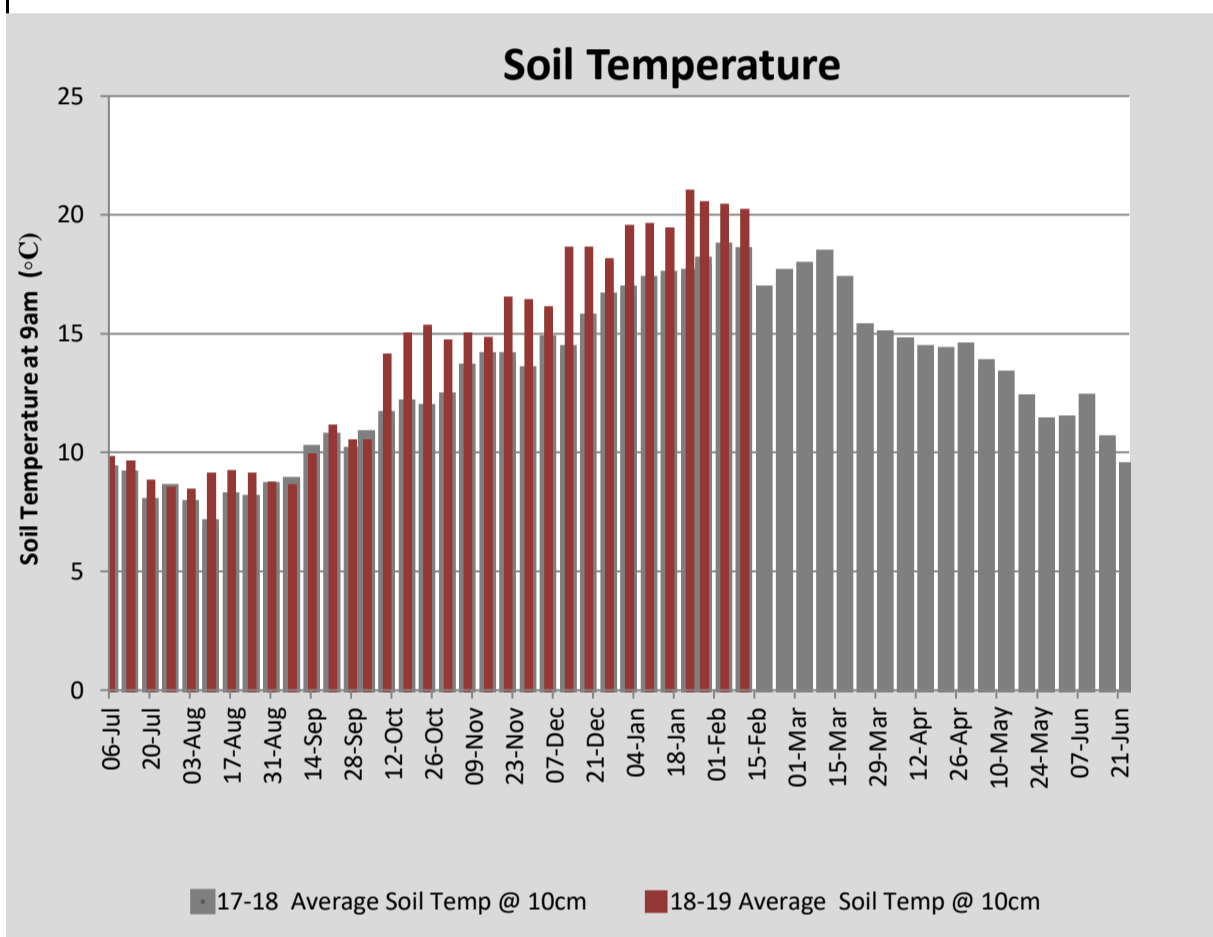
MILK PRODUCTION	Last Week	This Week	Variation
Average No. cows in milk (vat)	300	302	2
Litres per cow	14.3	16.3	1.9
% Fat	4.46	4.71	0.25
% Protein	3.33	3.37	0.04
MS/cow/day	1.11	1.32	0.20
MS/ha/day	2.95	3.52	0.57
BMCC	154	161	7
	Budget	To Date	
Total Milk Production (kgMS)	102,259	70,684	
MS/ha YTD	897		



Last 7 days					
Milkers Diet	kg DM	MJ ME	CP (%)	NDF (%)	\$/cow
Pasture Intake	7.0	11.6	20.3	49.4	0.0
Concentrates	5.0	12.5	14.0	20.0	0.0
Silage	3.0	10.1	13.8	41.0	0.0
Grazed forage	4.0	12.0	15.0	27.0	0.0
Other feeds	0.0	0.0	0.0	0.0	0.0
<b>Total</b>	<b>19</b>	<b>222</b>	<b>16.5</b>	<b>35.6</b>	<b>0</b>
<b>Target</b>	<b>210</b>	<b>16-18</b>	<b>&gt;33</b>	<b>0</b>	



The body condition scoring unit installed at the dairy



Analysis			
Expected growth rate next 7 days (kgDM/ha/day)	11	Target Leaf Grazing Stage	2.5-3.0
Total Demand from Pasture (kgDM/ha/day)	33	Predicted APC 7 days time	2303
APC balance (kgDM/ha/day)	-22	Predicted APC Change	-155.3

## Discussion

Milk production has continued to increase since the problem with amount of grain being fed has been addressed, along with the addition of turnips to the diet. The pasture has responded well to the rainfall, especially paddocks that had recently had the irrigation turned-off to conserve water. The cows are now being fed 4 kg DM/cow/day of turnips and it is estimated there is enough turnips to feed until the end of March. An automatic body condition scoring unit has been installed at the dairy. The cows will walk through this after each milking with the aim of providing regular and consistent body condition scores.

# 11 February 2019

