

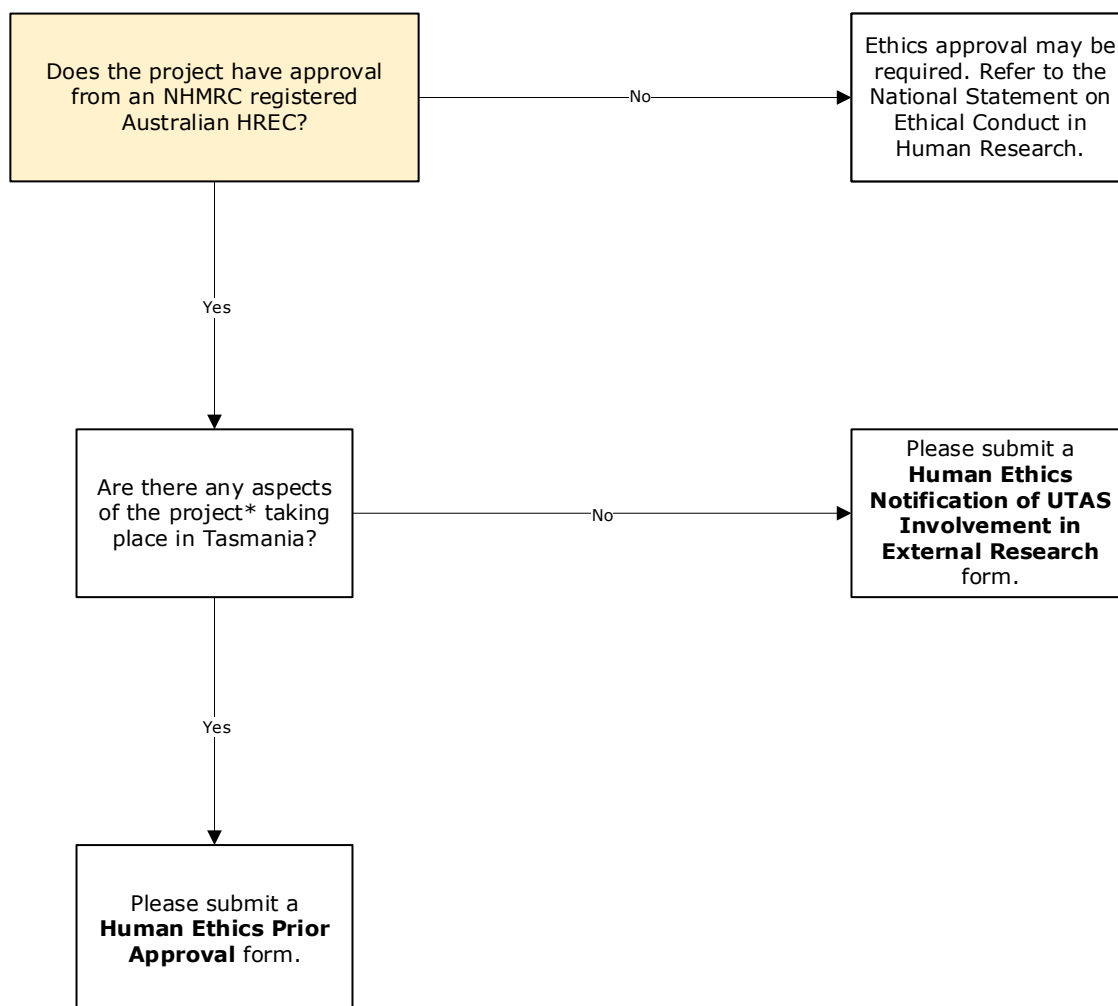


# Human Ethics Prior Approvals Which Form Do I Submit?

This information sheet is for University of Tasmania (UTAS) staff and students.

External (non-UTAS) researchers should refer to the website for information:

<https://www.utas.edu.au/research-admin/research-integrity-and-ethics-unit-rieu/human-ethics/about-human-research-ethics>



\* Including:

- Recruitment
- Consent
- Collection, use and management of data/information
- Communication of research findings or results to participants