

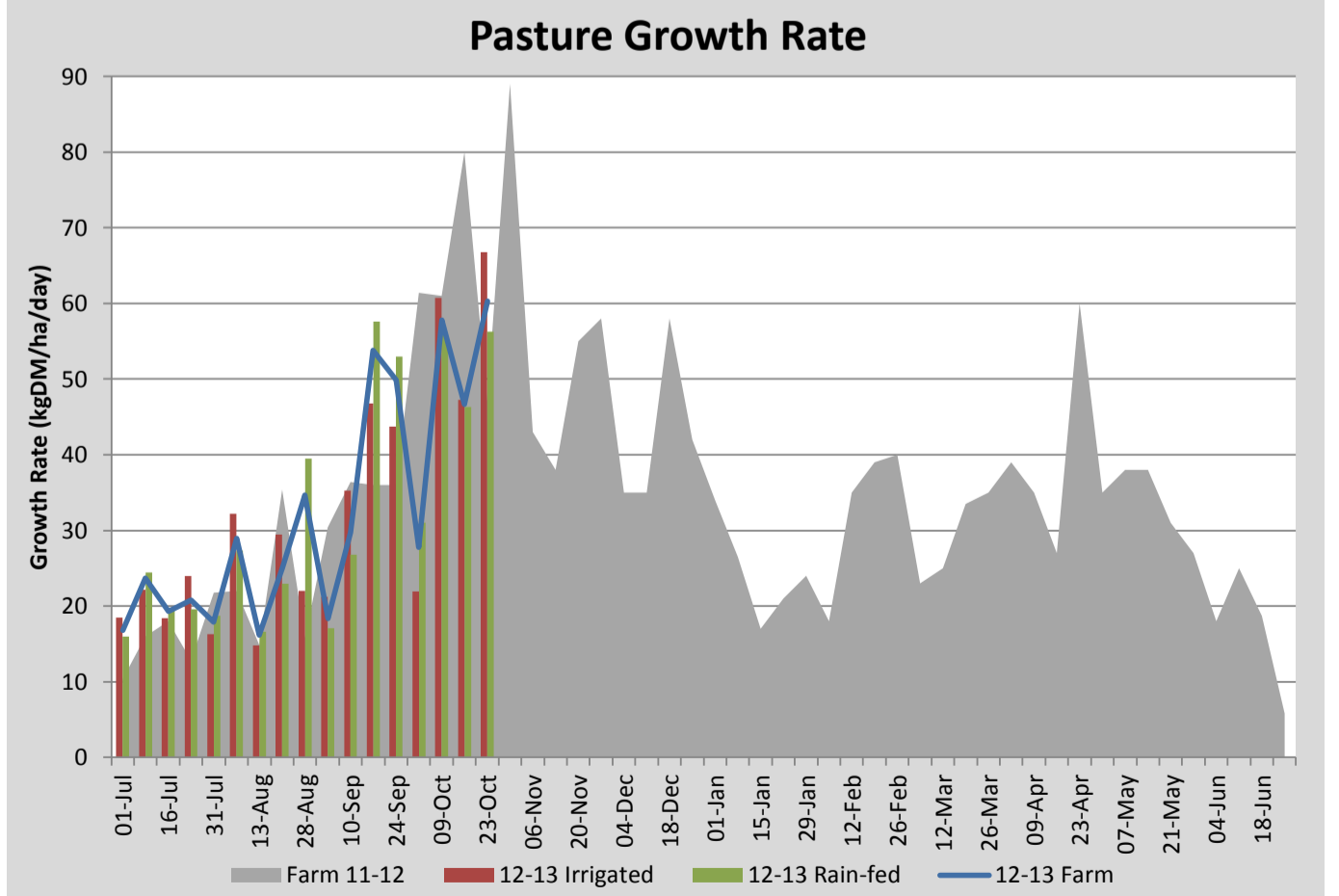
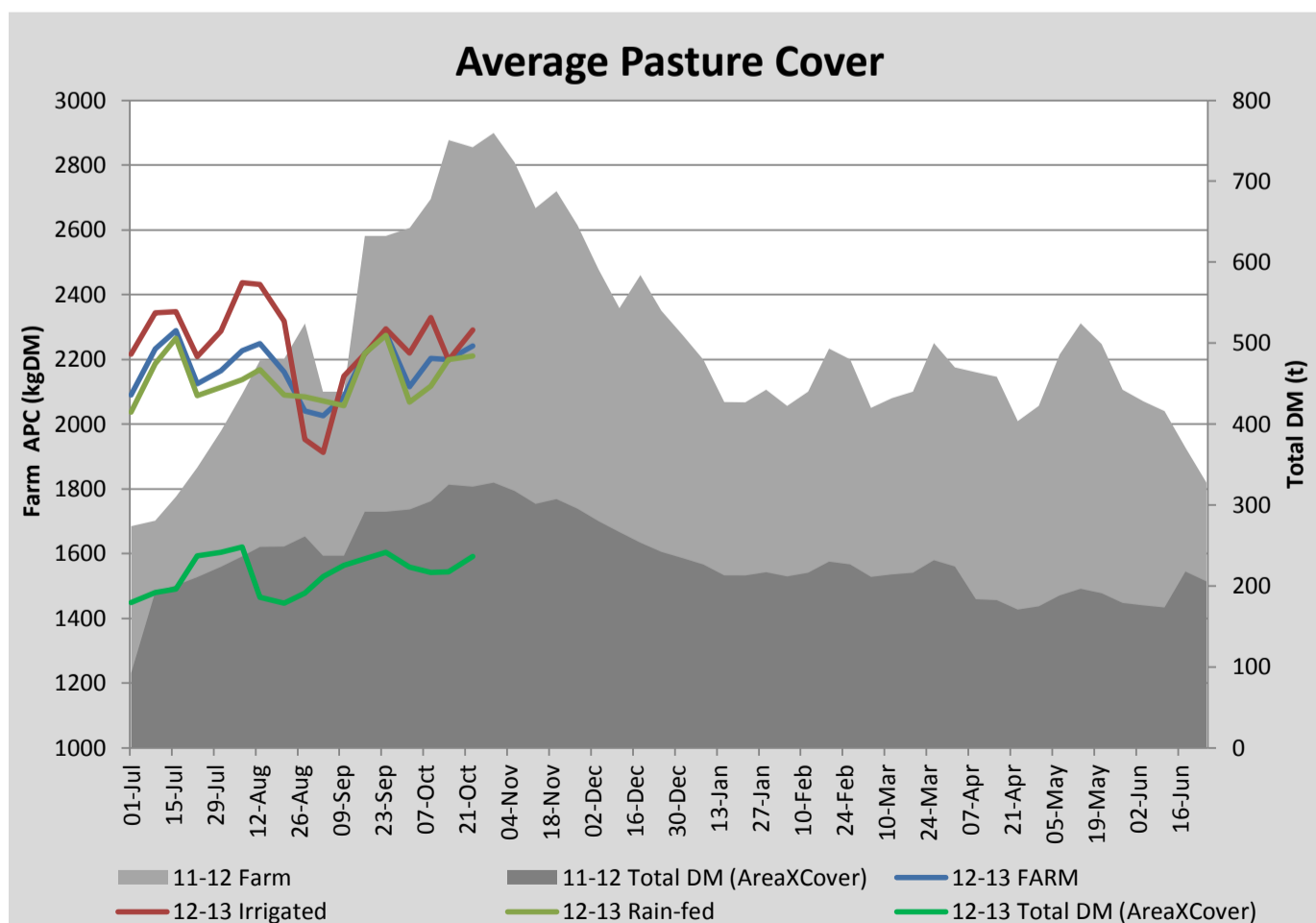
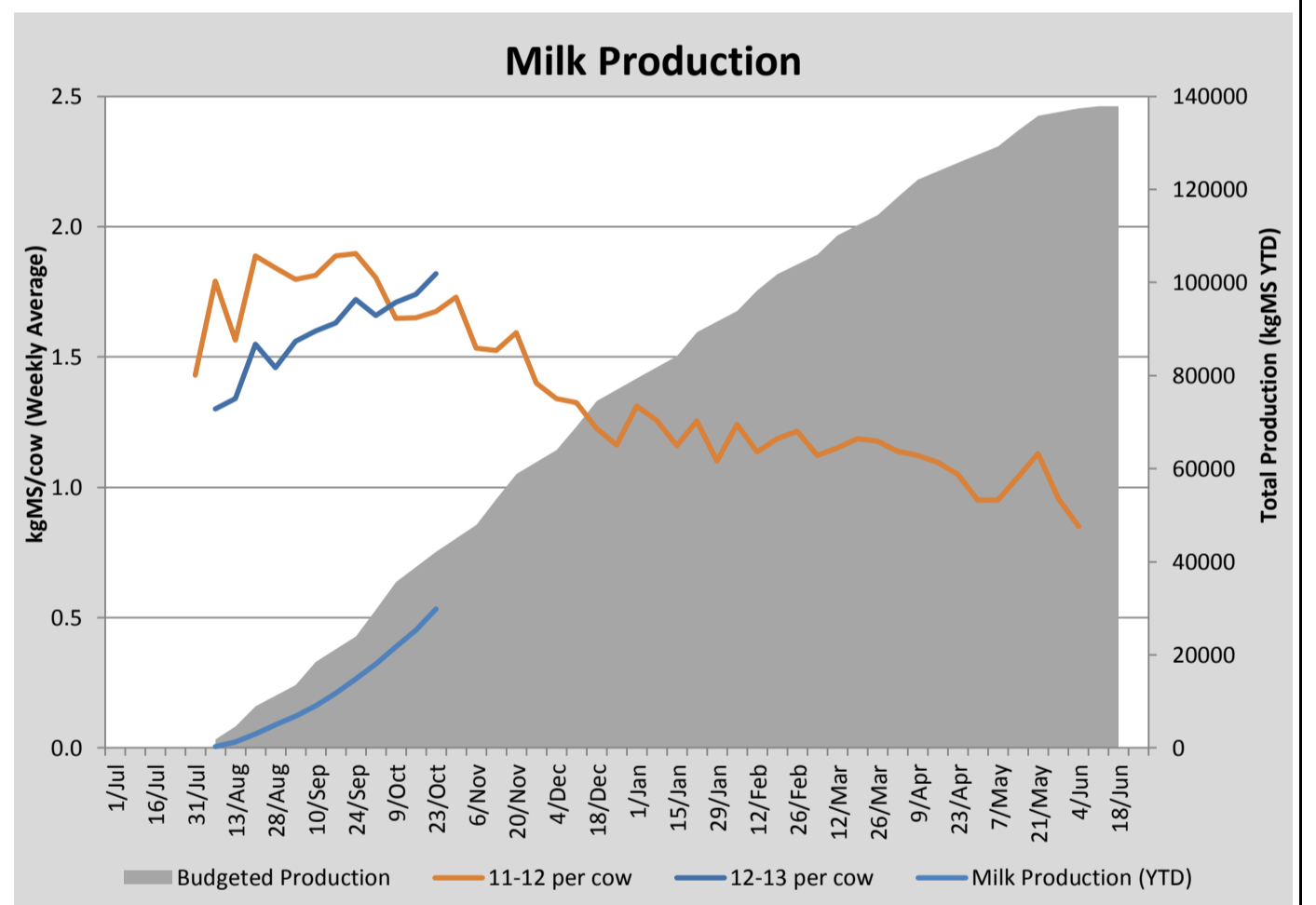
## Key Summary Points

- 1 Some light frosts have held back growth slightly this week but we are still building average cover.
- 2 Milk production continues to gradually climb. We have reached a herd average of 1.8kgMS/cow/day. Updated models indicate this is likely to be our peak (because of 40% first year heifer ratio).
- 3 Mating is underway.

PASTURE INFORMATION	Farm			Irrigated			Rain-fed		
	Last Week	This Week	Variation	Last Week	This Week	Variation	Last Week	This Week	Variation
Grazed milking area (ha)	98.9	105.4	6.5	58.6	65.1	6.52	40.3	40.3	0.00
Rotation Length (days)	26	28		21	21		31	34	
Grazing allocation per day (ha)	3.8	3.8	0.00	1.9	1.9	0.00	1.9	1.9	0.00
Average time since last grazed (days)	31	27	-4	31	27	4	31	27	-4
Leaf appearance rate (days per leaf)	10	10	0	10	10	0	10	10	0
Average Pasture Cover (kgDM/ha)	2199	2240	41	2198	2291	93	2199	2209	10
Pasture Growth Rate (kgDM/ha/day)	47	60	14	47	67	19	46	56	10
Post Grazing Biomass (kgDM/ha)	1550	1580	30						
Nitrogen applied YTD (kgN/ha)	79	79	0	6	0	-6	6	0	-6

\*Please note all pasture calculations detailed above are based on the current Grazed Milking Area

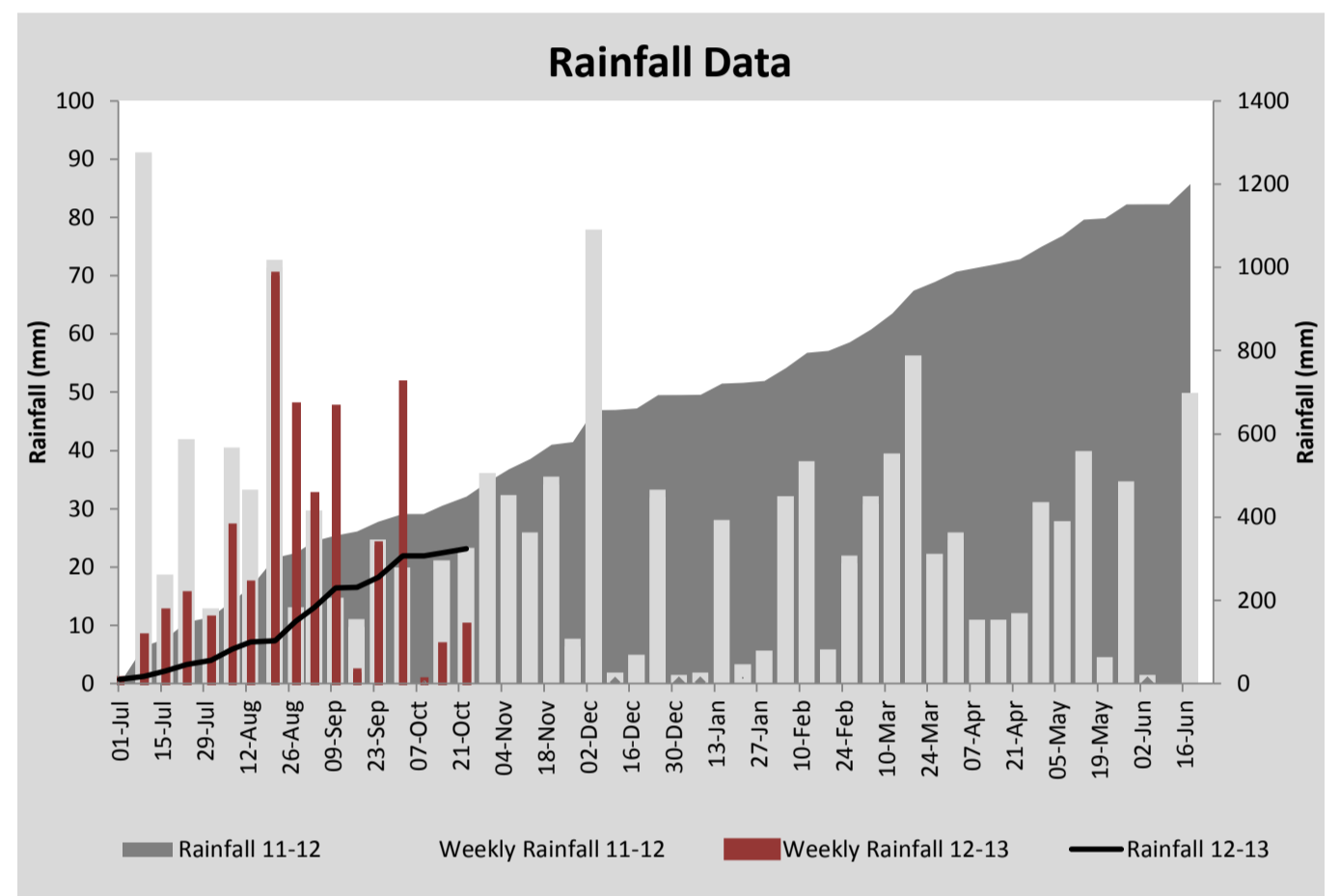
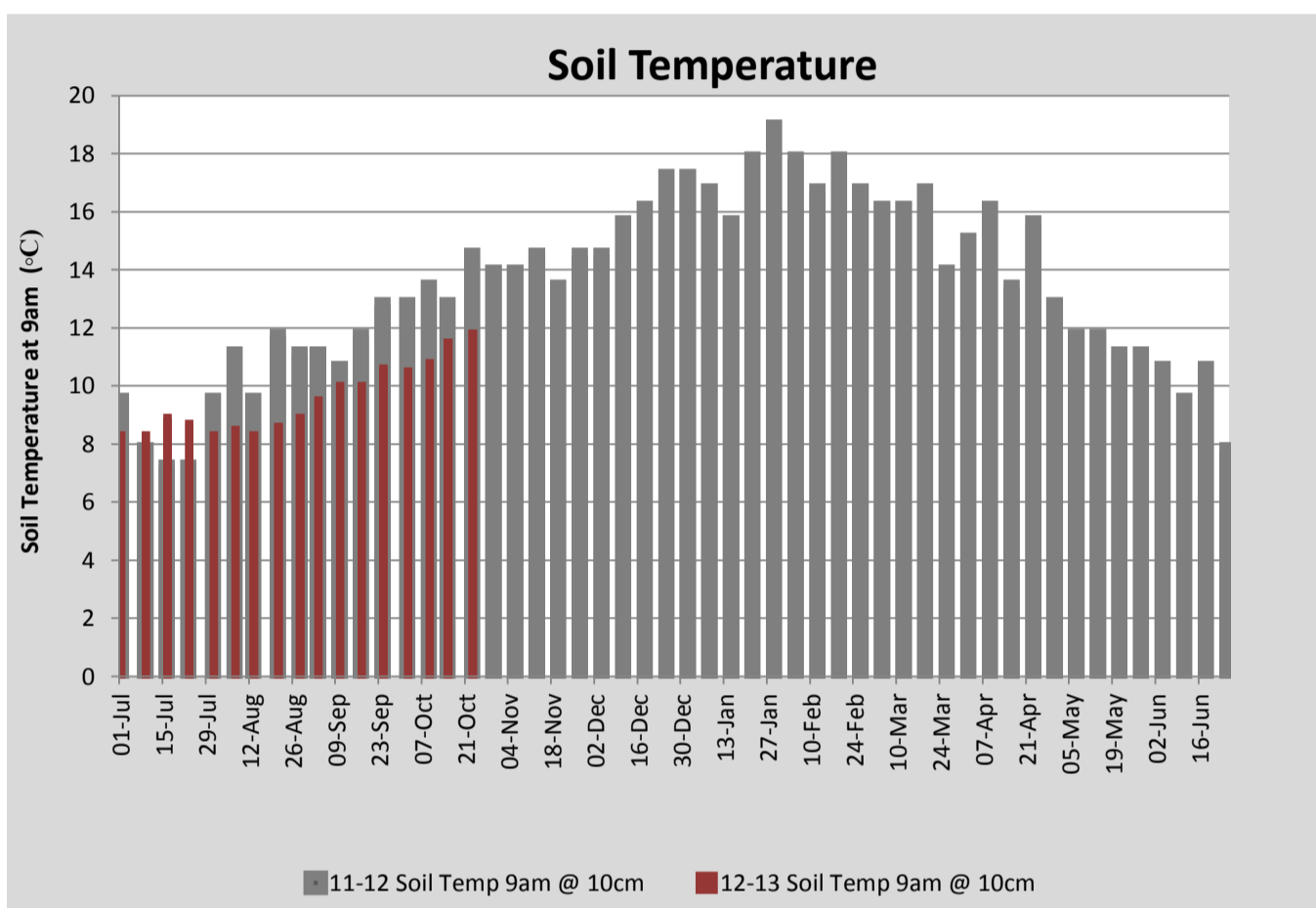
MILK PRODUCTION	Last Week	This Week	Variation
No cows in milk (vat)	305	318	13.00
Litres per cow	24.6	25.6	1.00
% Fat	3.92	3.95	0.03
% Protein	3.15	3.15	0.00
MS/cow/day	1.74	1.82	0.08
MS/ha/day	4.49	4.92	0.43
BMCC	183	183	0.00
Average Liveweight (kg)			
	Budget	To Date	Variation
Total Milk Production (kgMS)	42165	29803.00	71%
MS/ha YTD	376	266	-110



Milkers Diet	kg DM	ME	CP	NDF	\$/cow
Pasture Intake	14.8	12.5	0.0	0.0	0.0
Concentrates	3.2	12.0	0.0	0.0	0.0
Silage	0.0	0.0	0.0	0.0	0.0
Grazed forage	0.0	0.0	0.0	0.0	0.0
Other feeds	0.0	0.0	0.0	0.0	0.0
<b>Total</b>	<b>18</b>	<b>223.4</b>	<b>0</b>	<b>0</b>	<b>0</b>
<b>Target</b>	<b>18</b>		<b>0</b>	<b>0</b>	<b>0</b>



Scratchy heat detection aids in action



Analysis			
Expected growth rate next 7 days (kgDM/ha/day)	65	Target Leaf Grazing Stage	2.2
Total Demand from Pasture (kgDM/ha/day)	45	Predicted APC 7 days time	2378
APC balance (kgDM/ha/day)	20	Predicted APC Change	138.0

## Discussion

We continue to graze pasture at 2-2.5 leaves. This makes achieving residuals easier and has helped us maintain much better quality than last year at this time. We expect this quality to help us maintain a longer peak of production. We have re-modelled the herds predicted production (with UDDER) using the actual calving dates and 40% first year heifer ratio. This predicts us peaking at 1.8kgMS/cow/day (which we have just reached). We have left the milk budget target at the level set by the original model to give us a higher target to aim for. Mating has just started and our stick on 'scratchy' heat detection aids are all on. We found an electric frying pan lined with cardboard useful for pre-warming stickers. Some showers are forecast this week and depending on the rainfall result may help delay full irrigation start-up. We have had both the fixed irrigation and centre pivot watering for short periods to check operation and perform pre-season maintenance during the week. We are ironing out some final technical issues with our centre pivot computers but hope to have it fully operational very soon. We baled a light cut of some very green silage this week. This will make the bales heavy to handle, but it was deemed more important to get the grass cut and back in the rotation while there was still some soil moisture available to aid in regrowth. These paddocks are now included back in the rotation and this combined with our slightly higher pre-grazing covers mean our rotation length will extend out past 30 days this week (35 days rain-fed and 24 days irrigated). Based on growth rates and LER we want to target a rotation length of around 27 days. Therefore in order to maintain our target rotation length we will have remove further area for silage in the coming fortnight. Following the farm walk next week we will reassess the situation and identify paddock to for silage but in the meantime we will skip 'mowable' paddocks if pre-grazing cover exceeds 3100 kg DM/ha.

# 23 October 2012

