

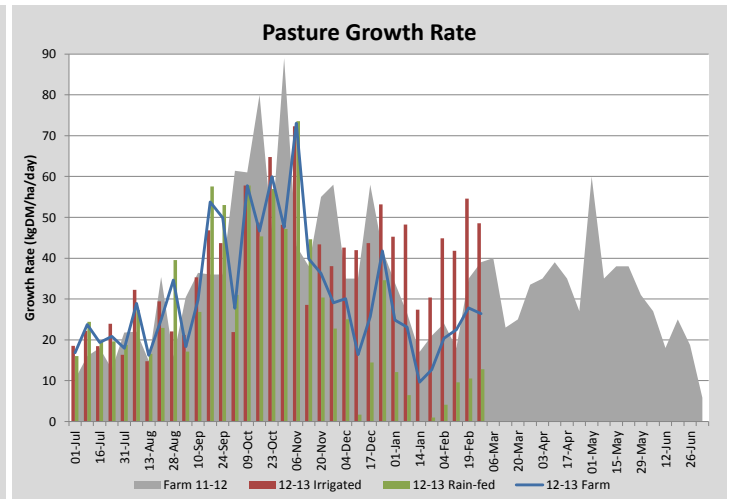
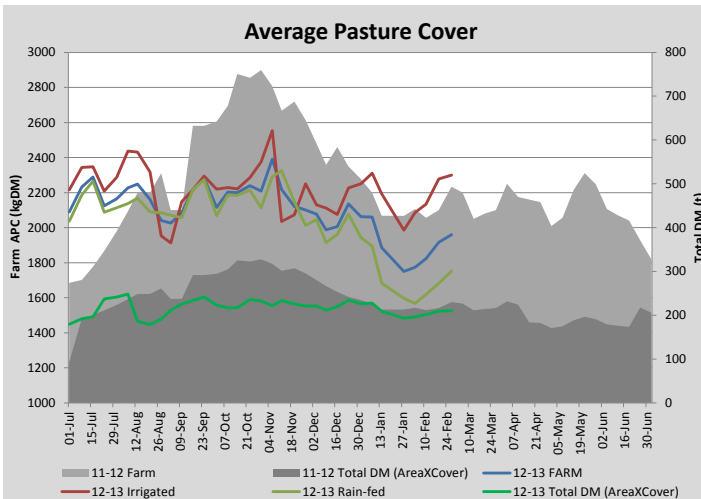
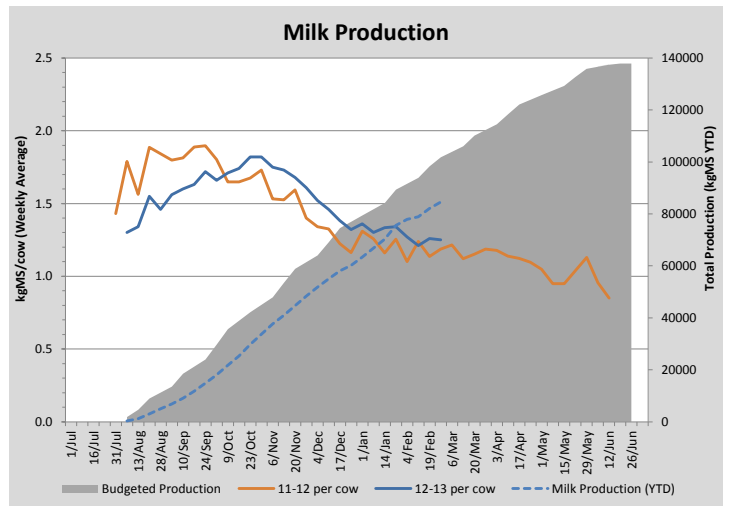
Key Summary Points

- 1** We continue to build average cover and cow production/condition is holding
- 2** Welcome rain has taken the pressure off irrigation reserves
- 3** Key focus this week on maintaining/improving cow condition and achieving target weight gains on R1 & R2

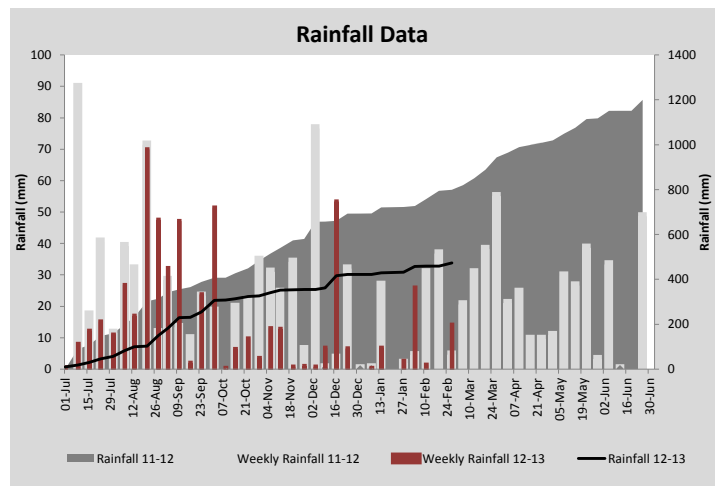
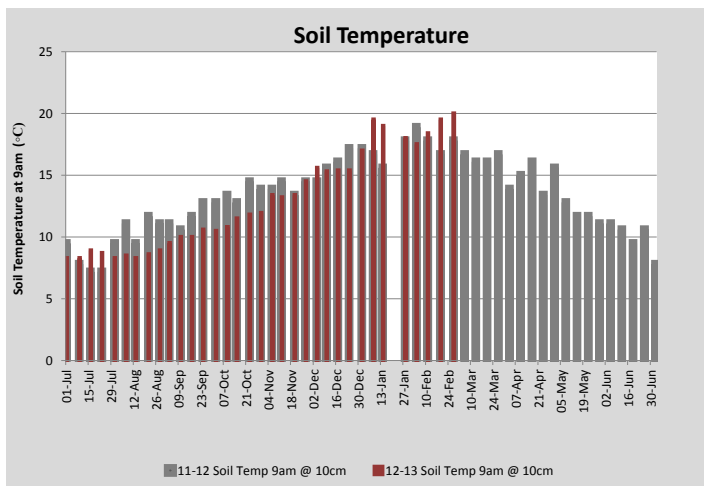
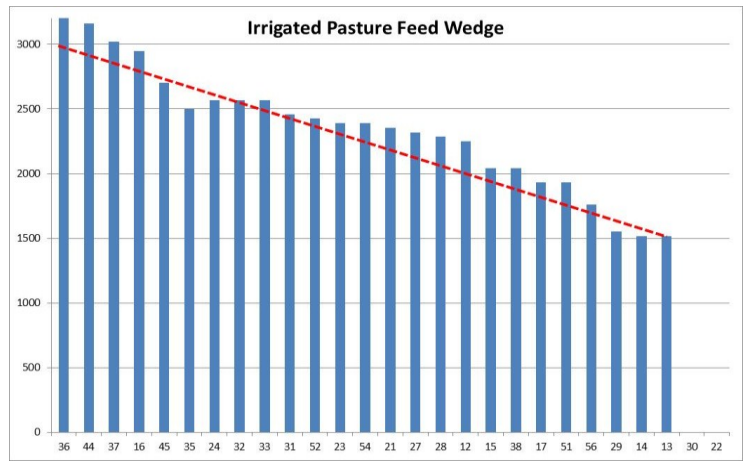
PASTURE INFORMATION	Farm			Irrigated			Rain-fed		
	Last Week	This Week	Variation	Last Week	This Week	Variation	Last Week	This Week	Variation
Grazed milking area (ha)	109.2	107.3	1.9	42.8	40.9	1.88	66.5	66.5	0.00
Rotation Length (days)	61	60		33	31		133	133	
Grazing allocation per day (ha)	1.8	1.8	0.00	1.3	1.3	0.00	0.5	0.5	0.00
Average time since last grazed (days)	57	60	3	29	28	1	75	80	5
Leaf appearance rate (days per leaf)	10	10	0	10	10	0	#N/A	#N/A	#N/A
Average Pasture Cover (kgDM/ha)	1916	1960	44	2278	2301	23	1683	1751	68
Pasture Growth Rate (kgDM/ha/day)	28	26	-1	55	49	-6	11	13	2
Post Grazing Biomass (kgDM/ha)	1500	1515	15						
Nitrogen applied YTD (kgN/ha)	201	204	3	0	3	3	0	0	0

*Please note all pasture calculations detailed above are based on the current Grazed Milking Area

MILK PRODUCTION	Last Week	This Week	Variation
No cows in milk (vat)	246	246	0.00
Litres per cow	16.5	16.4	0.14
% Fat	4.41	4.36	0.05
% Protein	3.21	3.24	0.03
MS/cow/day	1.26	1.25	0.01
MS/ha/day	2.26	2.25	0.00
BMCC	180	183	3.00
Average Liveweight (kg)			
	Budget	To Date	Variation
Total Milk Production (kgMS)	101799	84547	83%
MS/ha YTD	909	755	-154



Last 7 days					
Milkers Diet	kg DM	ME	CP	NDF	\$/cow
Pasture Intake	8.0	11.0	0.0	0.0	0.0
Concentrates	5.0	11.0	0.0	0.0	0.0
Silage	4.0	8.5	0.0	0.0	0.0
Grazed forage	0.0	0.0	0.0	0.0	0.0
Other feeds	0.0	0.0	0.0	0.0	0.0
Total	17	177	0	0	0
Target	17		0	0	0



Analysis			
Expected growth rate next 7 days (kgDM/ha/day)	25	Target Leaf Grazing Stage	3.0
Total Demand from Pasture (kgDM/ha/day)	14	Predicted APC 7 days time	2038
APC balance (kgDM/ha/day)	11	Predicted APC Change	77.9

Discussion

We are still detecting a small amount of growth on rain-fed paddocks and irrigated growth rates are holding. The current feed shortage means we can either reduce or stocking rate further, or purchase additional feed to allow us to maintain dry matter and energy intake until the autumn break. We have decided to maintain current milking numbers and have purchased a Palm Kernel/ Almond Hull mix (70/30) to feed to the milking herd which we can also feed to R1 and R2 heifers if necessary. At \$330/t (exc GST & without freight equalisation claimed) this compares favourably to purchasing grass silage when variability in quality, transport, wastage and feed-out costs are considered. While palm kernel and almond hulls are high in NDF, both feeds and particularly palm kernel are low in effective fibre due to small particle size. However the inclusion of 1.5 kg DM of grass silage ensures our diet has sufficient effective fibre. We have also purchased 50t of wheat straw to use as a winter supplement to be fed with the kale crop.

27 February 2013

