

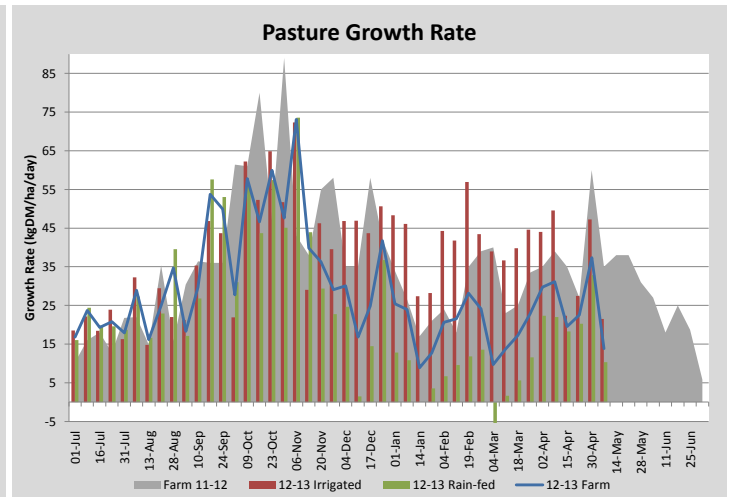
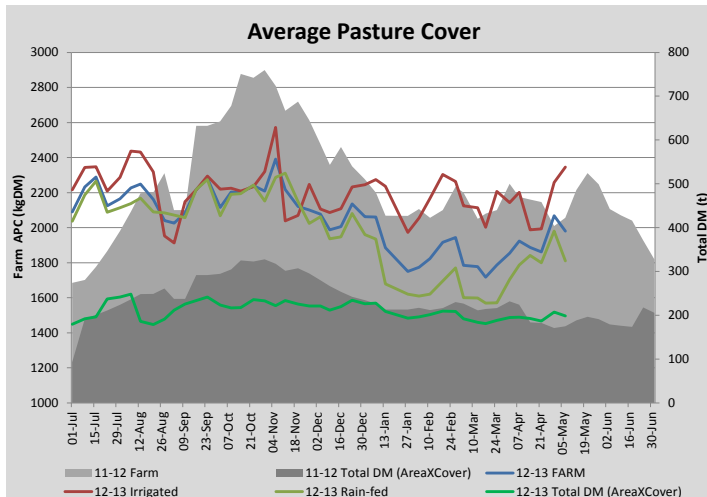
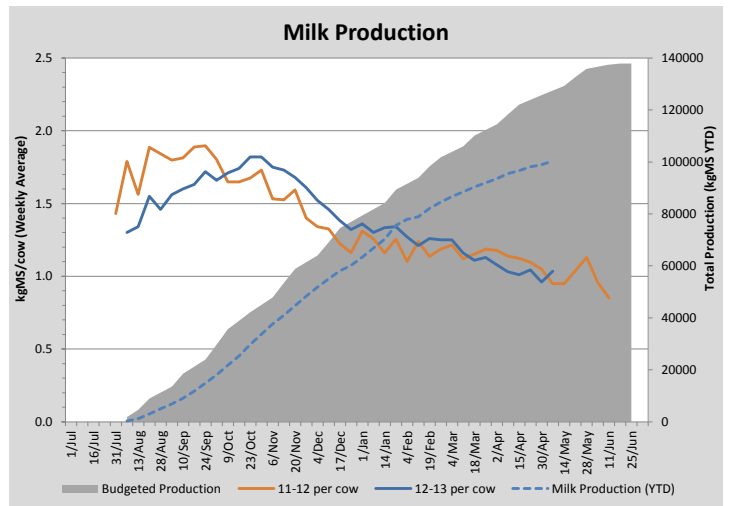
Key Summary Points

- 1** Growth rates and average cover have dropped due to demand from the More Milk From Forage (MMFF) research trial and falling soil temperature putting us slightly behind this time last year
- 2** Extra work being completed at the moment includes boundary fencing, clearing the trees from the lower dam wall and laneway maintenance
- 3** Key focus for this week is to reduce the lag between gazing with the More Milk From Forage (MMFF) research trial herd and cleaning up with the main herd to maximise the regrowth interval

PASTURE INFORMATION	Farm			Irrigated			Rain-fed		
	Last Week	This Week	Variation	Last Week	This Week	Variation	Last Week	This Week	Variation
Grazed milking area (ha)	100.3	100.3	0.0	31.7	31.7	0.00	68.6	68.6	0.00
Rotation Length (days)	84	59		40	63		172	57	
Grazing allocation per day (ha)	1.2	1.7	0.50	0.8	0.5	0.30	0.4	1.2	0.80
Average time since last grazed (days)	43	44	1	27	30	-3	50	50	0
Leaf appearance rate (days per leaf)	14	16	2	14	15	1	14	16	2
Average Pasture Cover (kgDM/ha)	2068	1980	-88	2258	2346	88	1980	1810	-169
Pasture Growth Rate (kgDM/ha/day)	37	14	-24	47	21	-26	33	10	-23
Post Grazing Biomass (kgDM/ha)	1400	1400	0						
Nitrogen applied YTD (kgN/ha)	250	250	0	0	0	0	0	0	0

*Please note all pasture calculations detailed above are based on the current Grazed Milking Area

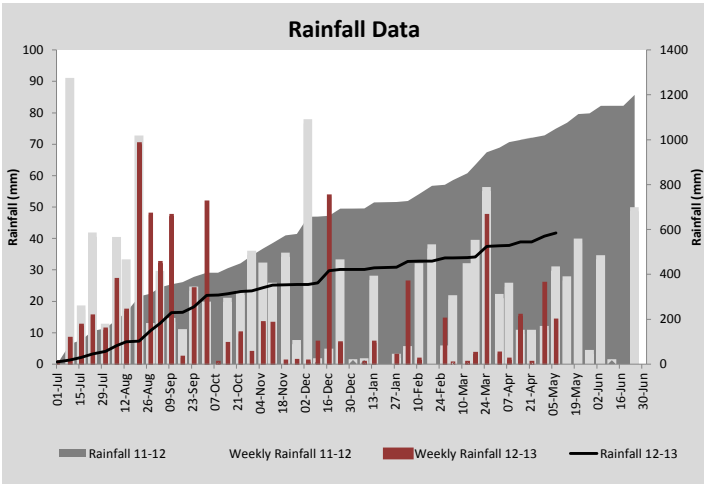
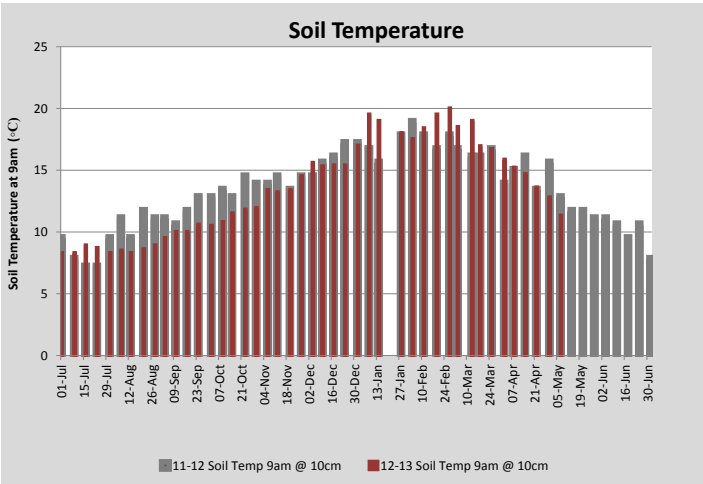
MILK PRODUCTION	Last Week	This Week	Variation
No cows in milk (vat)	160	160	0.00
Litres per cow	11.5	12.5	1.01
% Fat	4.85	4.74	0.11
% Protein	3.53	3.56	0.03
MS/cow/day	0.96	1.04	0.08
MS/ha/day	1.37	1.48	0.11
BMCC	177	176	1.00
Average Liveweight (kg)			
	Budget	To Date	Variation
Total Milk Production (kgMS)	127497	100322	79%
MS/ha YTD	1138	896	-243



Last 7 days					
Milkers Diet	kg DM	ME	CP	NDF	\$/cow
Pasture Intake	12.0	11.0	0.0	0.0	0.0
Concentrates	5.0	11.0	0.0	0.0	0.0
Silage	0.0	0.0	0.0	0.0	0.0
Grazed forage	0.0	0.0	0.0	0.0	0.0
Other feeds	0.0	0.0	0.0	0.0	0.0
Total	17	187	0	0	0
Target	17		0	0	0



Cows on the MMFF trial



Analysis			
Expected growth rate next 7 days (kgDM/ha/day)	25	Target Leaf Grazing Stage	3.0
Total Demand from Pasture (kgDM/ha/day)	21	Predicted APC 7 days time	2011
APC balance (kgDM/ha/day)	4	Predicted APC Change	30.8

Discussion

Growth rates and average pasture cover have dropped significantly over the past week due to the combined effects of increased area allocation required for the MMFF trial (as expected) and a drop in soil temperature (12.8°C to 11.32°C). High residuals being left by the ad-lib fed MMFF trial cows (64) are taking some time to graze down with the remainder of the herd (96). This has resulted in a 3-4 day lag between the two herds. We will dry off the entire herd at the end of the MMFF trial period (5 days). Silage feeding has been restricted to the dry/young stock and the milkers concentrate allocation has been reduced to 3.5kgDM/cow/day due to a suspected case of acidosis and to help increase pasture intake and clean up residuals behind the MMFF cows faster. We will consider using other herds (eg. R2) to clean up residuals if the gap between the two milking herds widens further. Autumn sowings are growing well and we will be looking to start grazing some of these paddocks with calves in the coming week.

7 May 2013

