

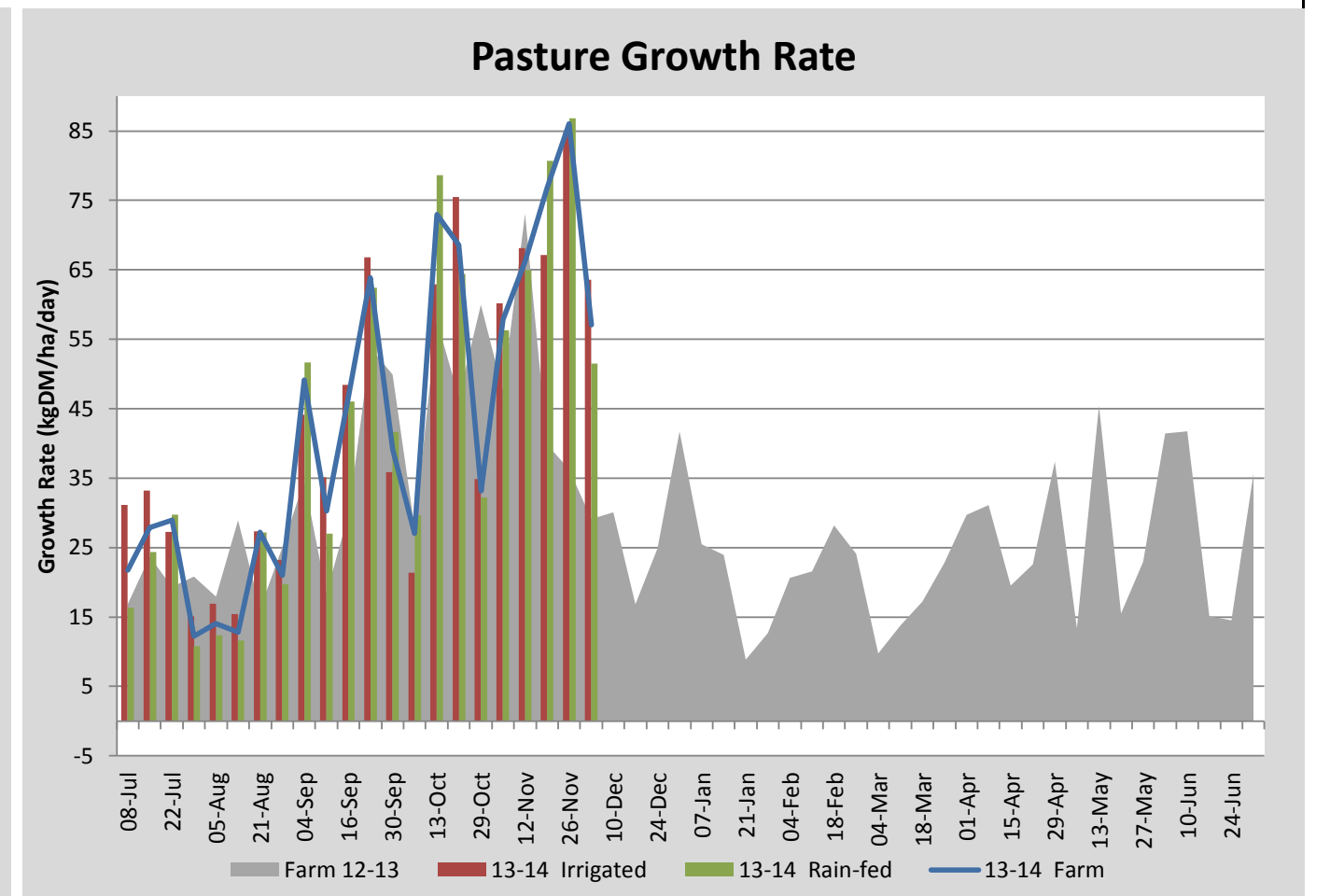
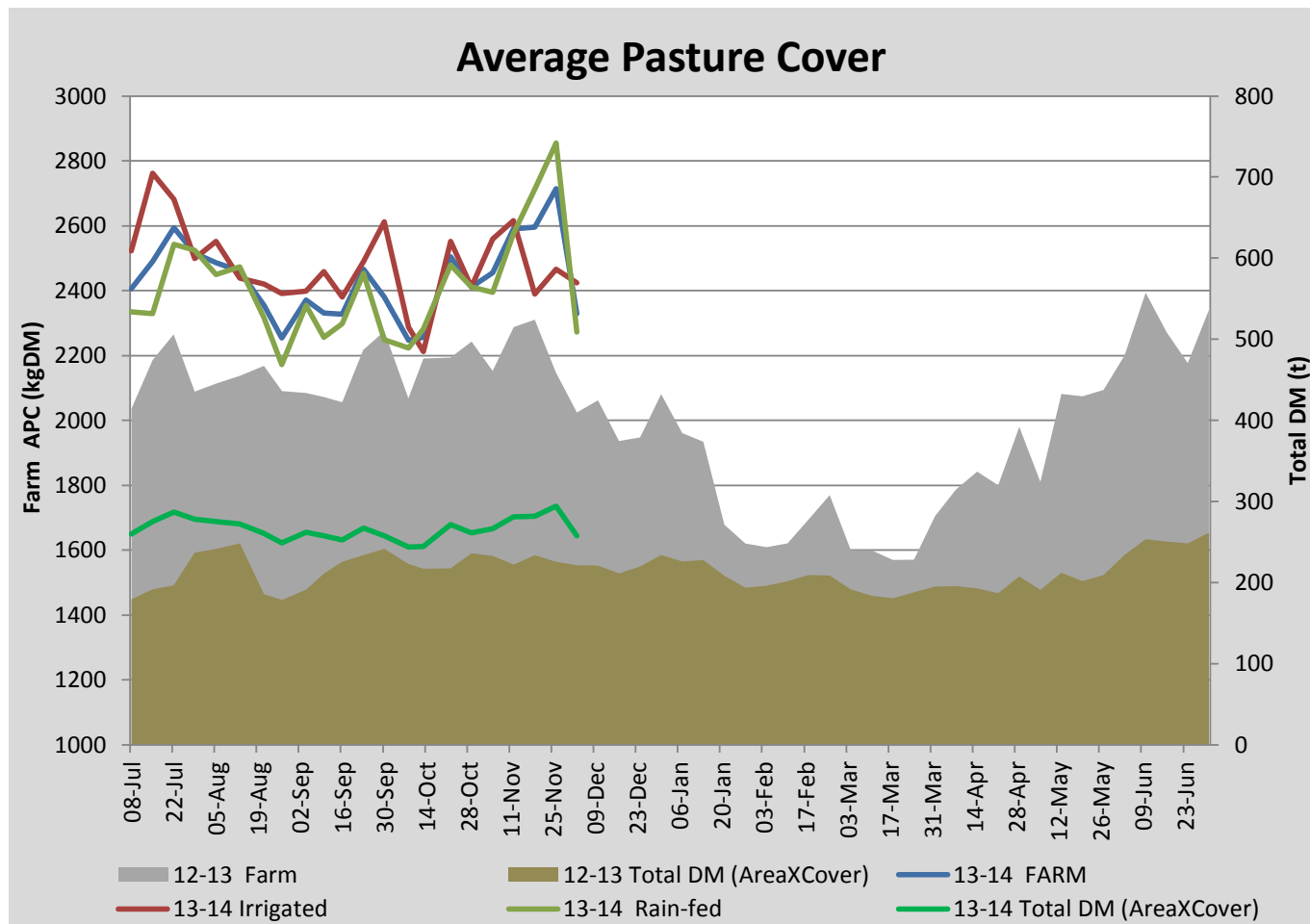
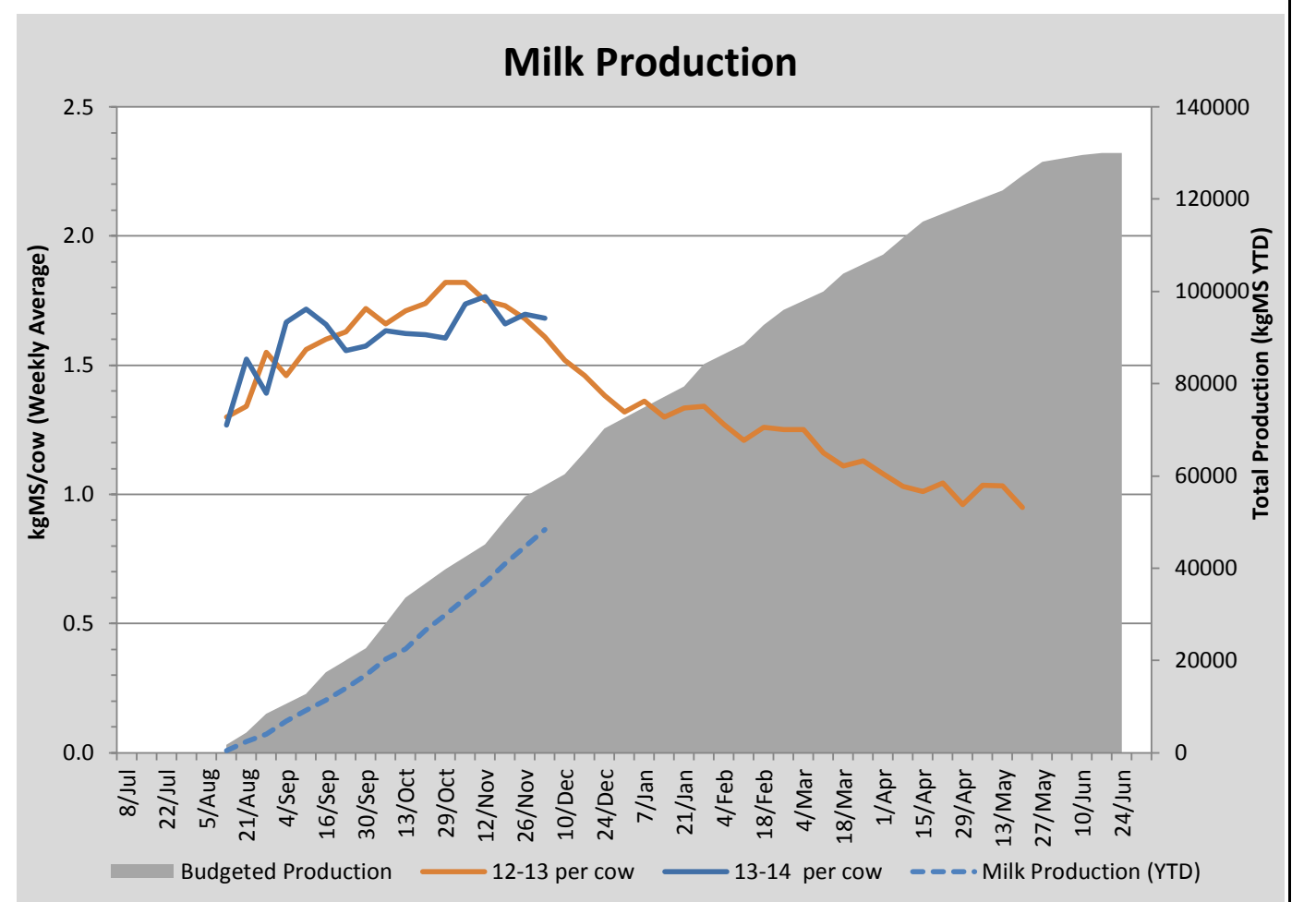
Key Summary Points

- 1** Average pasture cover decreased significantly due to 18 ha of the milking area being cut for silage.
- 2** Nitrogen has been applied to the milking area.
- 3** Bulls have been put in with the milking herd.

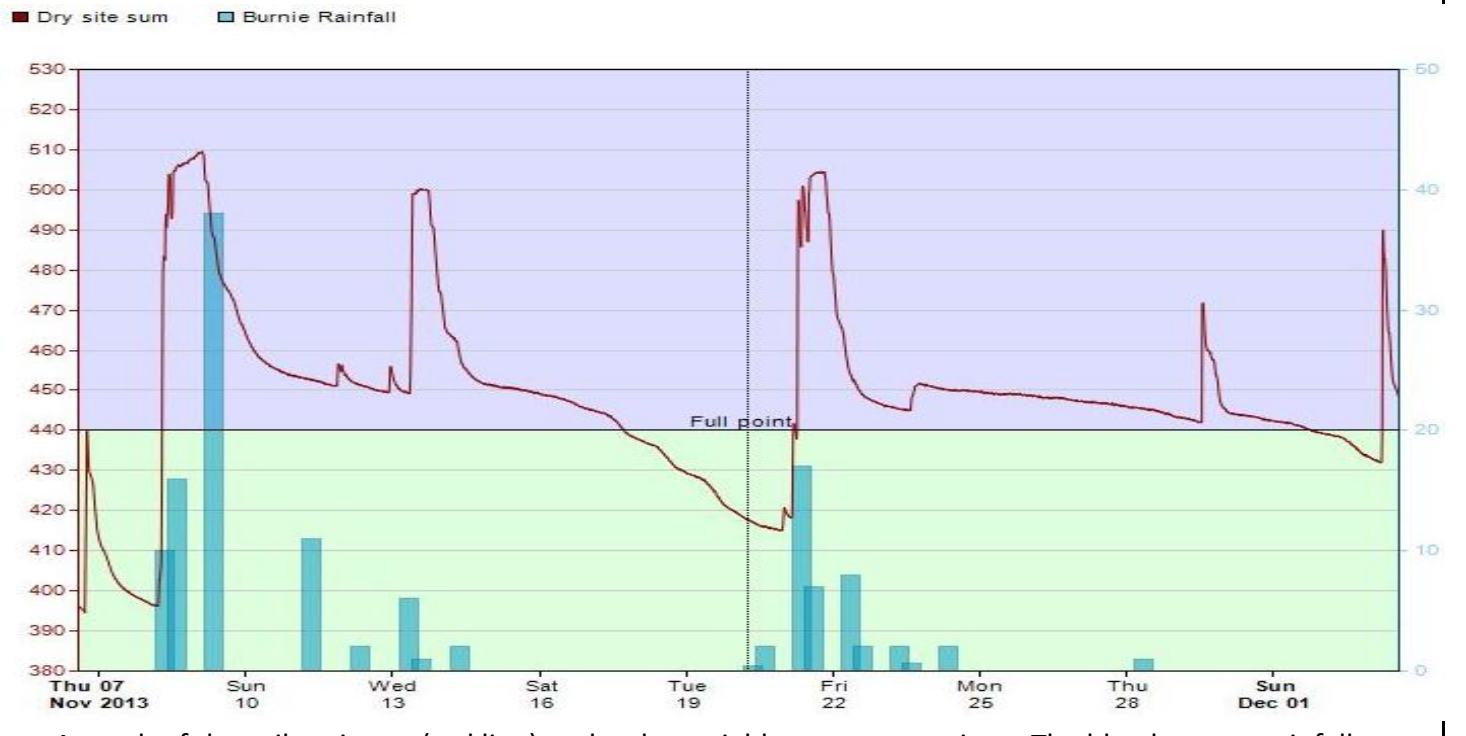
PASTURE INFORMATION	Farm			Irrigated			Rain-fed		
	Last Week	This Week	Variation	Last Week	This Week	Variation	Last Week	This Week	Variation
Grazed milking area (ha)	108.4	110.5	2.1	38.9	41.0	-2.1	68.3	69.5	-1
Rotation Length (days)	36	33	-2	24	24	-0	49	43	-5
Grazing allocation per day (ha)	3.0	3.3	0.3	1.6	1.7	0.1	1.4	1.6	0.2
Average time since last grazed (days)	29	25	-4	29	29	0	29	23	-6
Leaf appearance rate (days per leaf)	12	11	-2	11	10	-1	13	11	-2
Average Pasture Cover (kgDM/ha)	2714	2328	-386	2467	2423	-43	2855	2272	-584
Pasture Growth Rate (kgDM/ha/day)	86	57	-29	85	64	-21	87	51	-35
Post Grazing Biomass (kgDM/ha)	1688	1787	99						
Nitrogen applied YTD (kgN/ha)	40	54	14	0	15	15	0	13	13

*Please note all pasture calculations detailed above are based on the current Grazed Milking Area

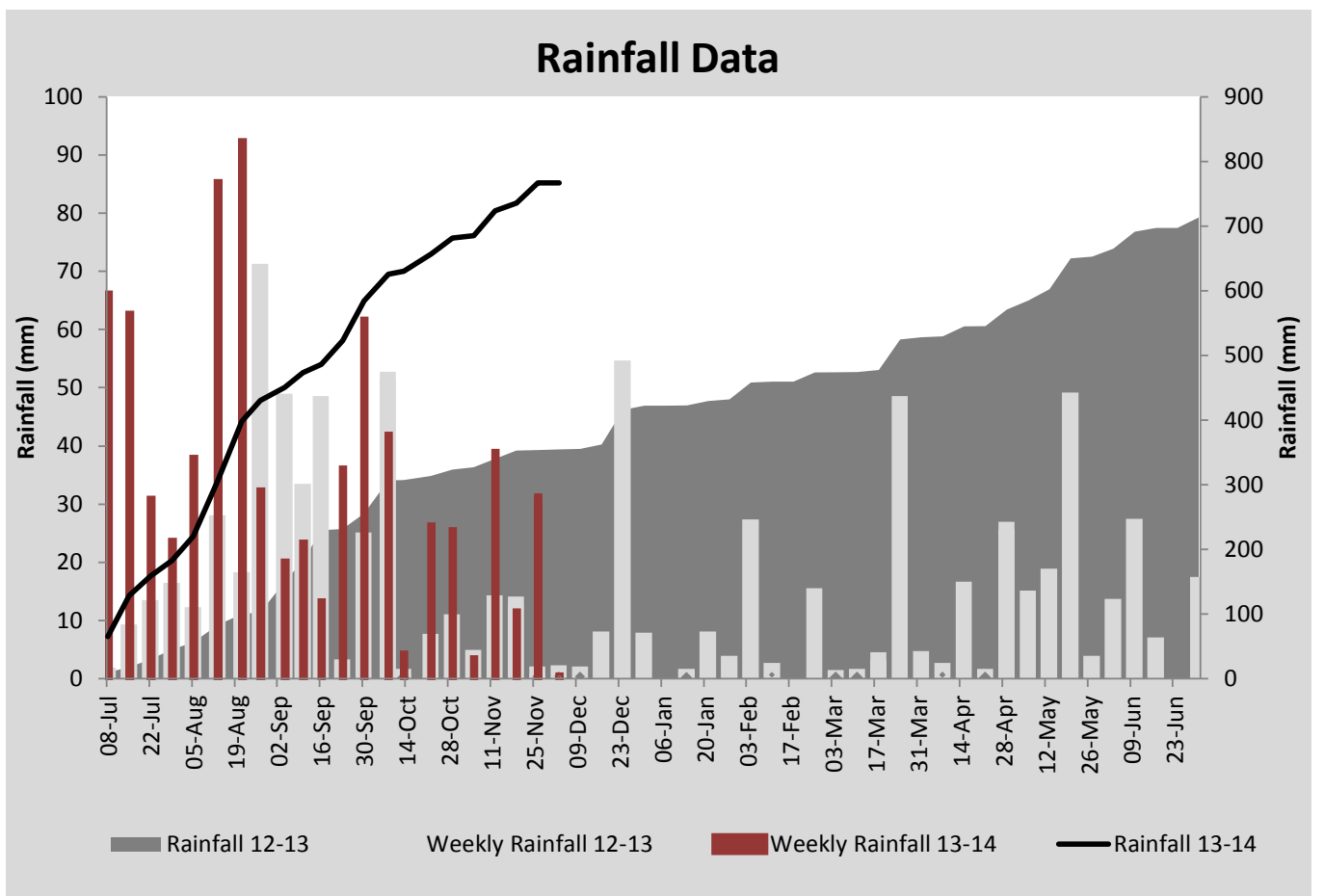
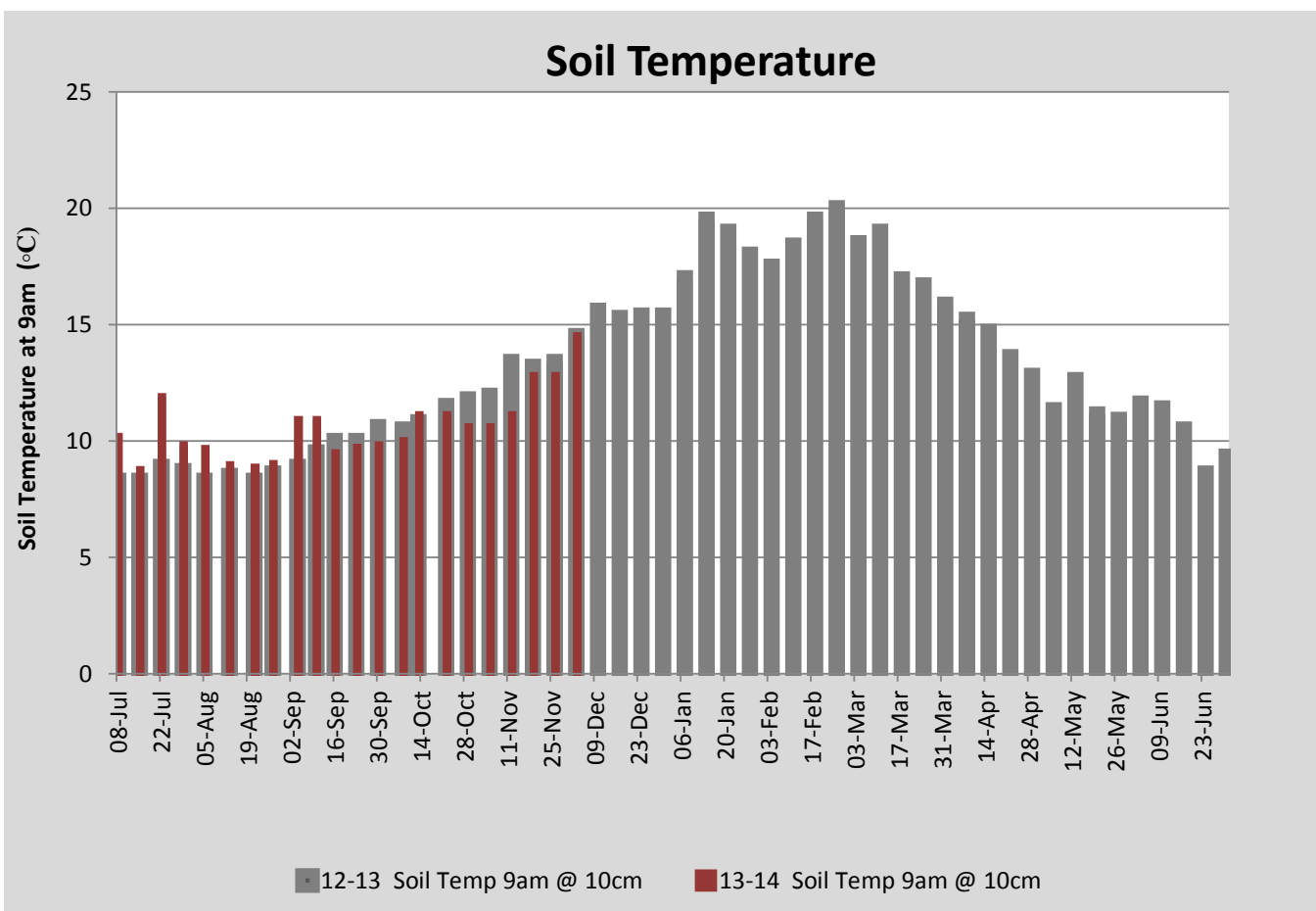
MILK PRODUCTION	Last Week	This Week	Variation
Average No. cows in milk (vat)	320	320	0
Litres per cow	23.6	23.6	-0.0
% Fat	4.07	4.03	-0.04
% Protein	3.12	3.00	-0.12
MS/cow/day	1.70	1.68	-0.02
MS/ha/day	4.81	4.76	-0.04
BMCC	167	153	-14
Average Liveweight (kg)	489	488	-1
	Budget	To Date	Variation
Total Milk Production (kgMS)	57,929	48,340	83%
MS/ha YTD	517	464	-53



Last 7 days					
Milkers Diet	kg DM	MJ ME	CP (%)	NDF (%)	\$/cow
Pasture Intake	15.3	10.2	13.4	49.8	0.0
Concentrates	4.0	13.0	11.0	21.0	0.0
Silage	0.0	0.0	0.0	0.0	0.0
Grazed forage	0.0	0.0	0.0	0.0	0.0
Other feeds	0.0	0.0	0.0	0.0	0.0
Total	19.3	208.1	12.9	43.8	0
Target		191	16-18	>33	0



A graph of the soil moisture (red line) under the variable rate centre pivot. The blue bars are rainfall.



Analysis			
Expected growth rate next 7 days (kgDM/ha/day)	70	Target Leaf Grazing Stage	2.0
Total Demand from Pasture (kgDM/ha/day)	47	Predicted APC 7 days time	2487
APC balance (kgDM/ha/day)	23	Predicted APC Change	158.8

Discussion

A further 18 hectares of the milking area was cut this week for silage producing 136 bales. This has reduced the average pasture cover significantly. It is expected that over the next week, a second cut of silage will be made on the run-off area. Irrigation water was applied this week as can be seen from the graph in the top right corner of this page – the spikes in the red line on November 29 and December 3 are the irrigation applications. Spot spraying of thistles along with boom spraying for thistles and capeweed is continuing. Anoestrus cows that had been treated with a Cue Mate were fixed-time inseminated on Saturday. Bulls were put in with the milking herd on Sunday.

3 December 2013

