

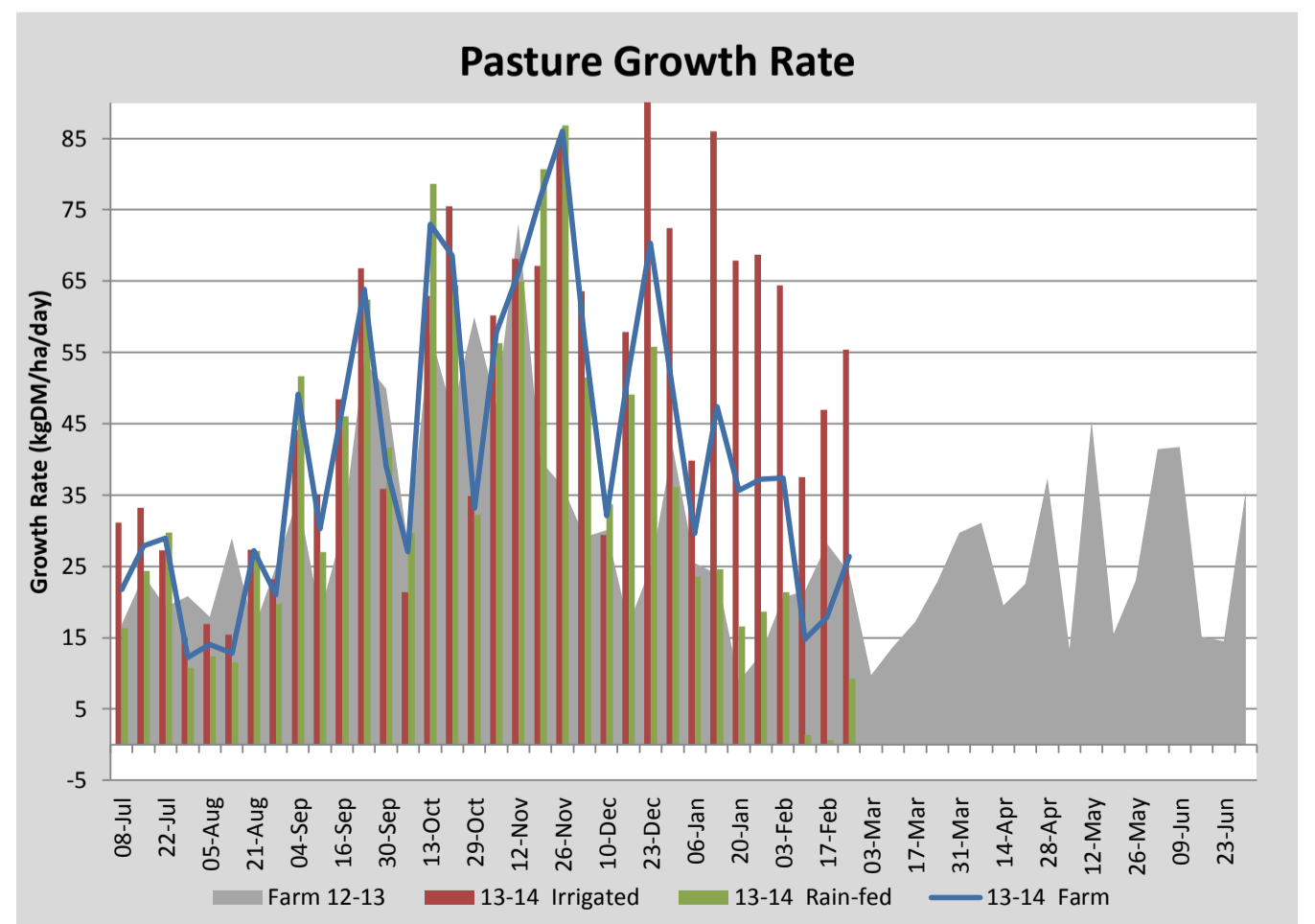
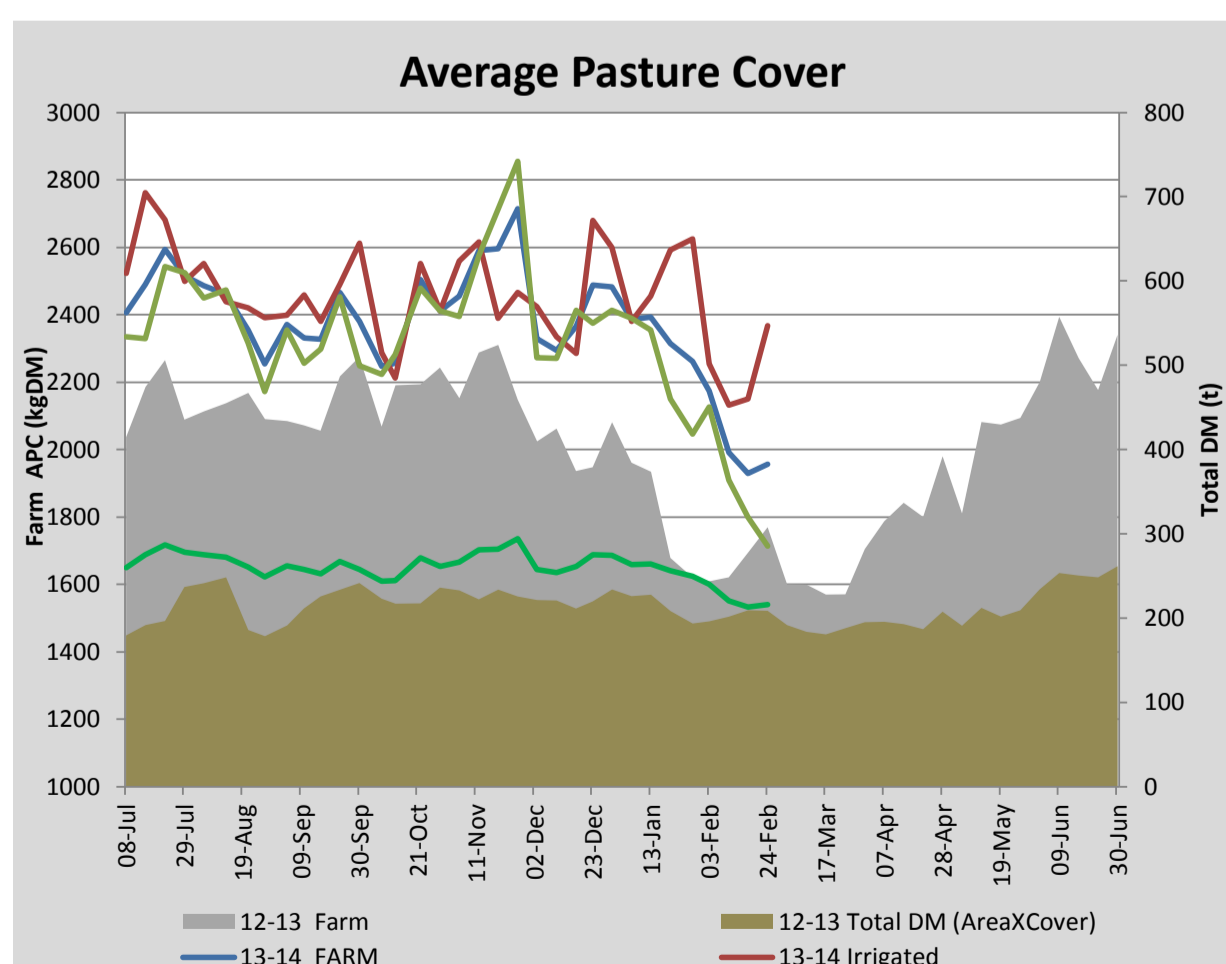
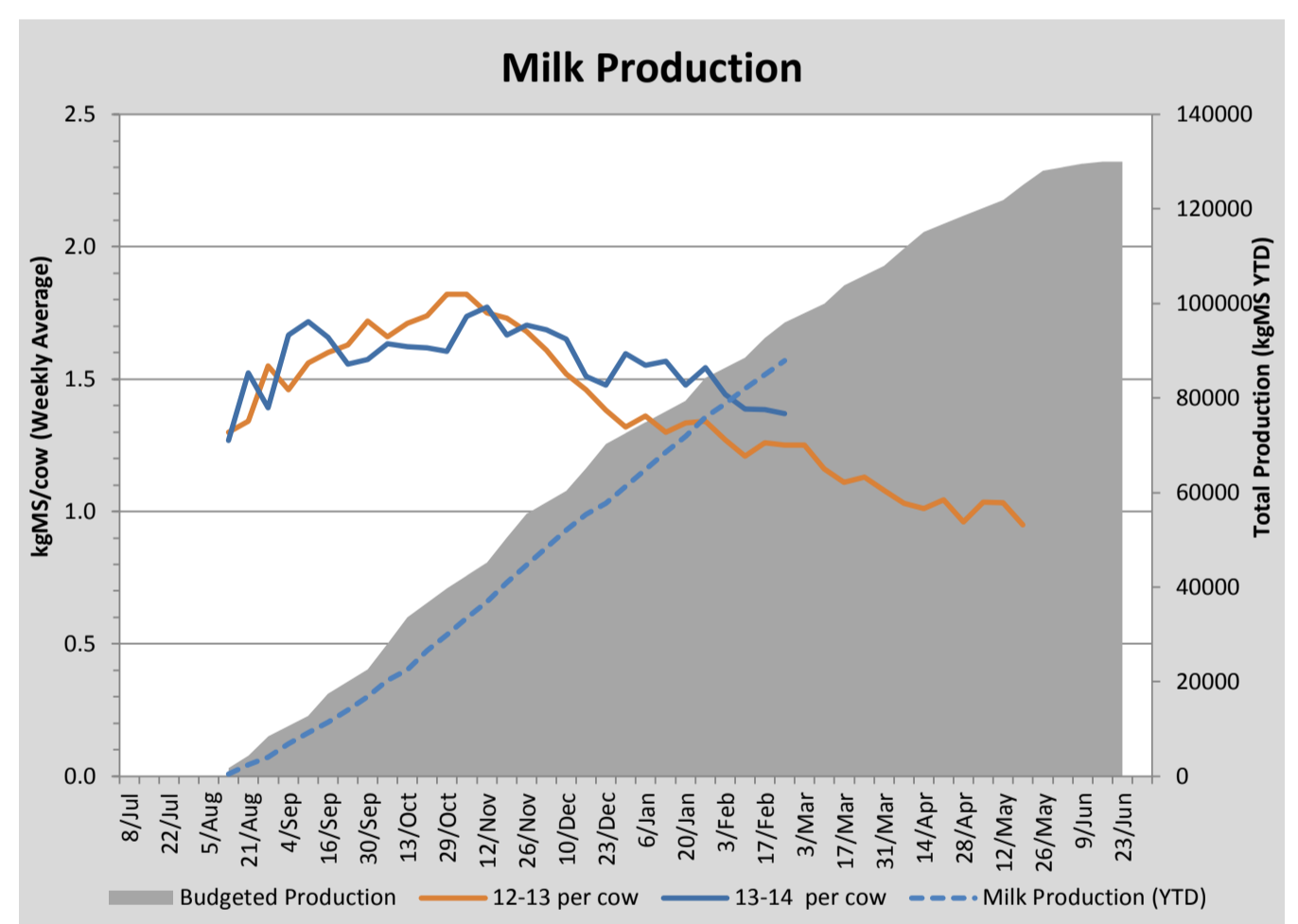
Key Summary Points

- 1** Average pasture cover has built slightly this week to 1957kgDM/ha with increased growth rates on the irrigated and rainfed paddocks most likely due to recent rainfall (10.2mm).
- 2** Per cow milksolid production is holding well, dropping slightly to 1.37kgMS/cow/day.
- 3** Focus for the coming week is to manage intakes of R1 and R2 heifers on the run off to ensure weight targets are achieved.

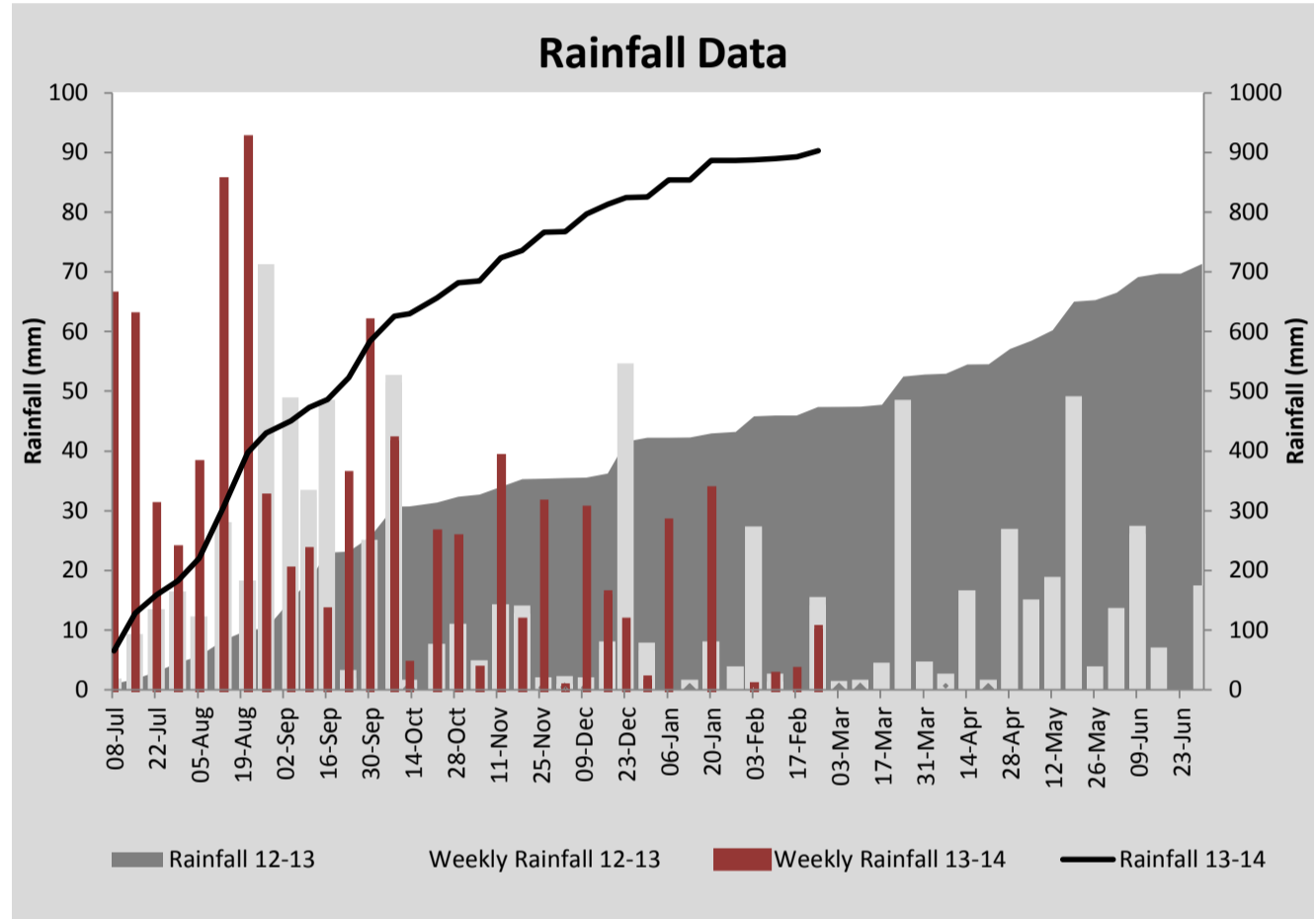
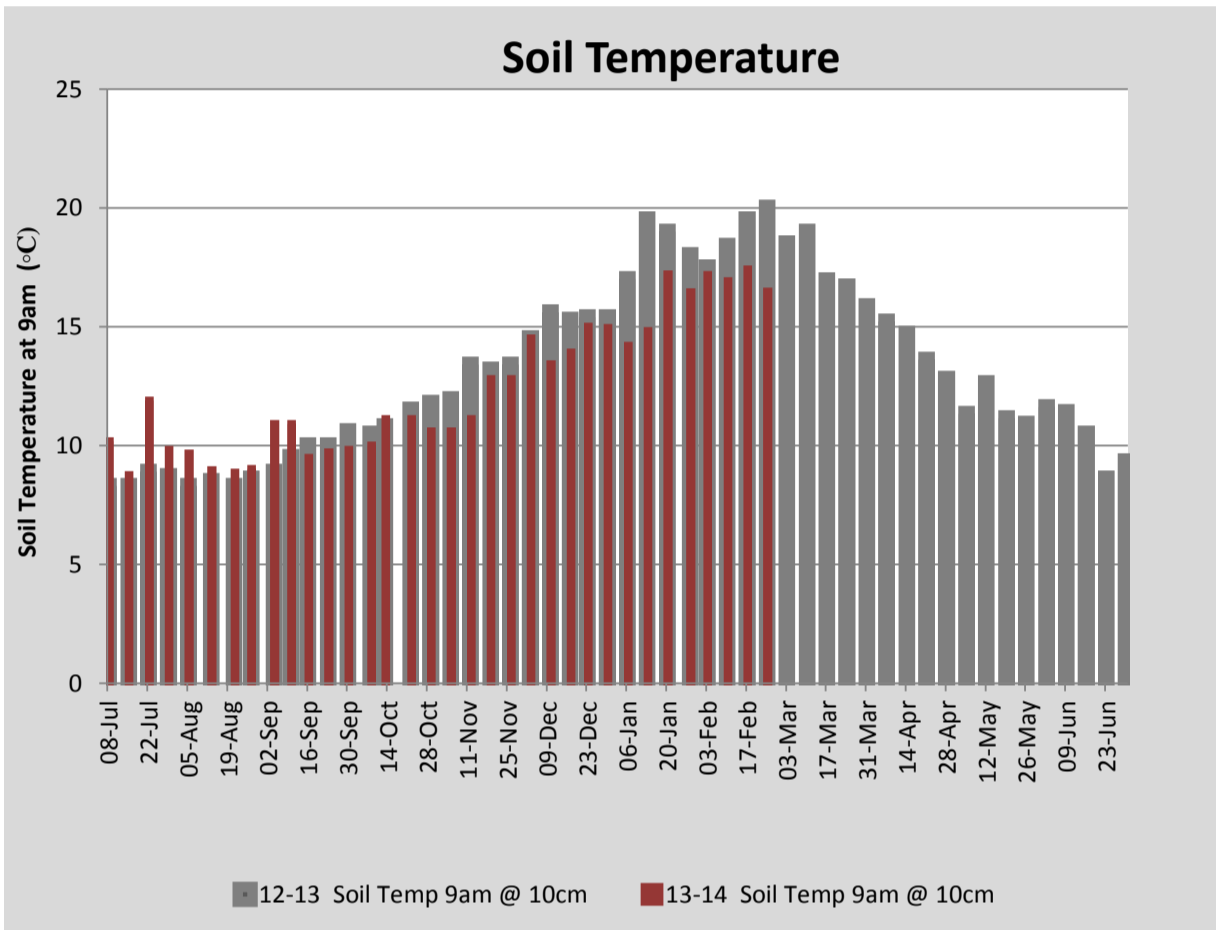
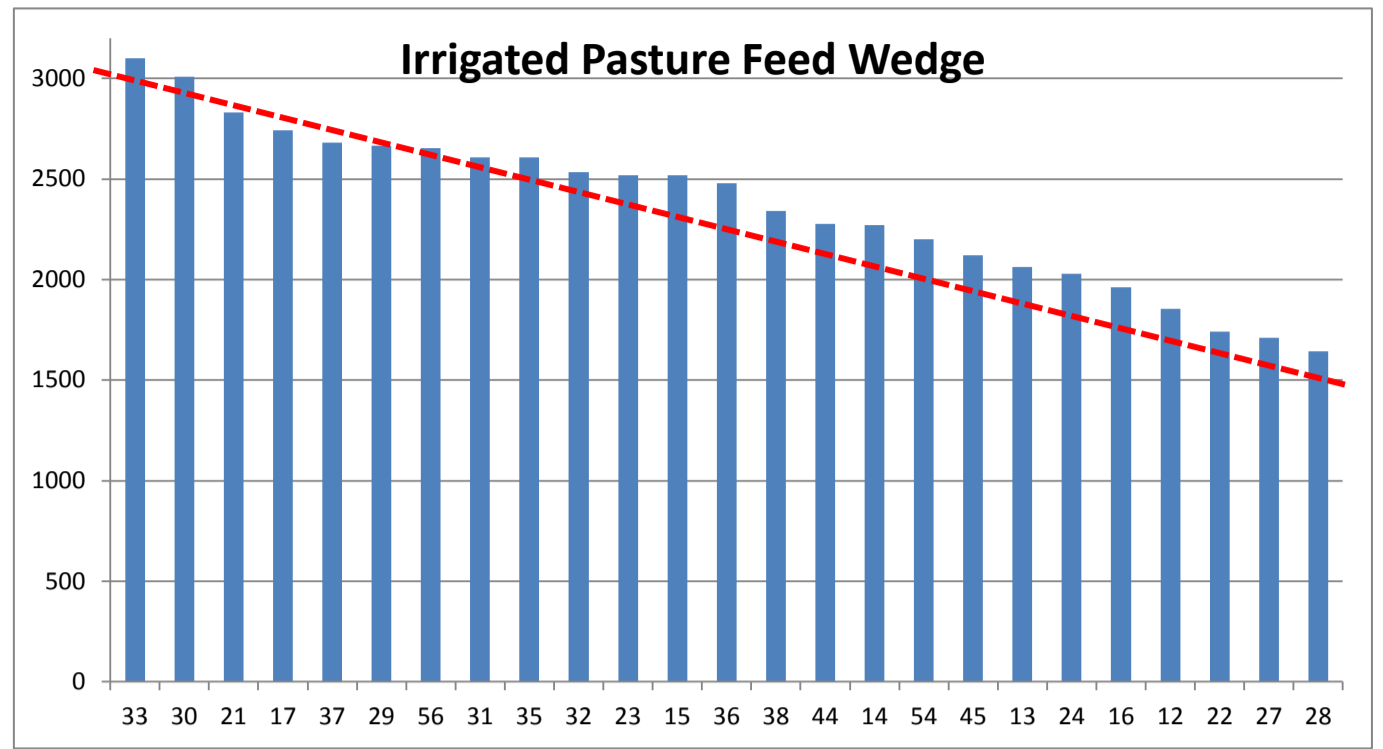
PASTURE INFORMATION	Farm			Irrigated			Rain-fed		
	Last Week	This Week	Variation	Last Week	This Week	Variation	Last Week	This Week	Variation
Grazed milking area (ha)	110.5	110.5	0.0	41.0	41.0	0.0	69.5	69.5	0
Rotation Length (days)	44	43	-2	32	46	14	58	41	-17
Grazing allocation per day (ha)	2.5	2.6	0.1	1.3	0.9	-0.4	1.2	1.7	0.5
Average time since last grazed (days)	33	37	4	21	19	-2	40	48	8
Leaf appearance rate (days per leaf)	15	15	-0	8	9	1	19	19	-0
Average Pasture Cover (kgDM/ha)	1929	1957	27	2150	2367	217	1799	1714	-85
Pasture Growth Rate (kgDM/ha/day)	18	26	9	47	55	8	1	9	9
Post Grazing Biomass (kgDM/ha)	1400	1425	25						
Nitrogen applied YTD (kgN/ha)	107	108	1	15	1	-14	0	0	0

*Please note all pasture calculations detailed above are based on the current Grazed Milking Area

MILK PRODUCTION	Last Week	This Week	Variation
Average No. cows in milk (vat)	312	302	-10
Litres per cow	18.2	17.7	-0.5
% Fat	4.40	4.46	0.05
% Protein	3.15	3.37	0.22
MS/cow/day	1.39	1.37	-0.01
MS/ha/day	3.83	3.66	-0.16
BMCC	111	120	9
Average Liveweight (kg)	515	519	4
	Budget	To Date	Variation
Total Milk Production (kgMS)	95,985	87,907	92%
MS/ha YTD	857	829	-28



Last 7 days					
Milkers Diet	kg DM	MJ ME	CP (%)	NDF (%)	\$/cow
Pasture Intake	8.8	11.2	17.7	52.2	0.0
Concentrates	4.5	13.0	11.0	21.0	0.0
Silage	3.7	10.5	15.0	49.0	0.0
Grazed forage	0.0	0.0	0.0	0.0	0.0
Other feeds	0.0	0.0	0.0	0.0	0.0
Total	17	195.9	15.3	43.2	0
Target		191	16-18	>33	0



Analysis			
Expected growth rate next 7 days (kgDM/ha/day)	20	Target Leaf Grazing Stage	3.0
Total Demand from Pasture (kgDM/ha/day)	23	Predicted APC 7 days time	1933
APC balance (kgDM/ha/day)	-3	Predicted APC Change	-23.9

Discussion

Average pasture cover has built slightly this week to 1957kgDM/ha. Extending the rotation on the irrigated paddocks last week has increased APC on these paddocks by 217kgDM/ha (APC irrigated 2367kgDM/ha). Recent rainfall (10.2mm) has created some growth on the rainfed portion of the platform with a measured average growth rate of 9kgDM/ha/day. We expect cover to hold into the coming week, provided that growth rates under the irrigation are maintained. Average per cow production is holding well at 1.37kgMS/cow/day. The rotation on the run off has been slowed as much as possible. R2 heifers are being allocated between 5.5 and 6kgDM/head/day and are being used to clean up rank/rough paddocks on the run off and platform. Restricting intake of the R2 heifers at the moment will help to maintain cover on the run off until the autumn break. As the R2s are above target weight (when last weighed), overall weight gain targets should not be compromised. R1 heifers are being allocated approximately 4.5kgDM/head/day pasture and have been grazing better quality pasture paddocks (new grass and hay/silage regrowth) and a plantain (Ceres Tonic) trial paddock. We will start to supplement the R1s with concentrate in the coming weeks to ensure that target weights are achieved.

24 February 2014

