

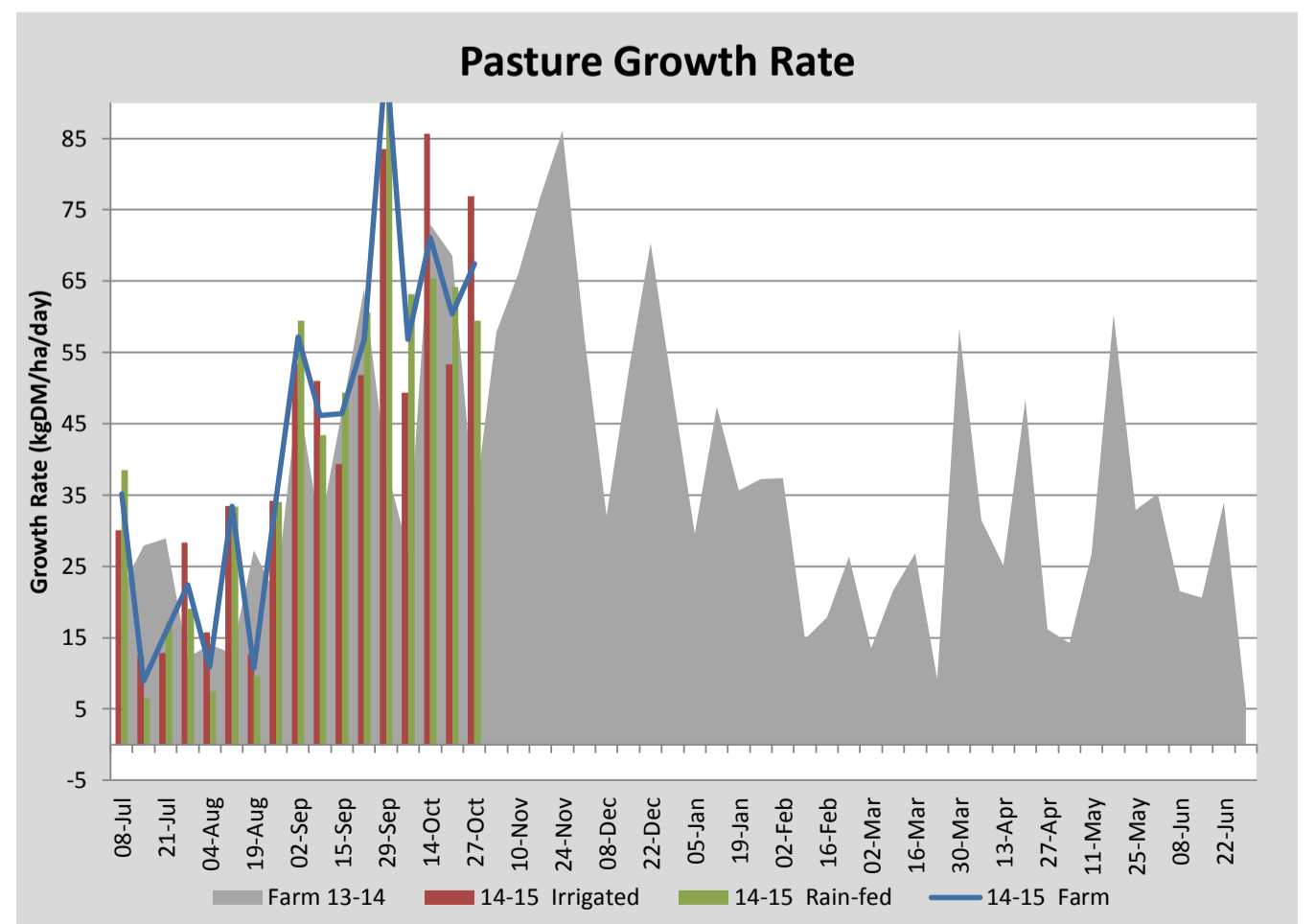
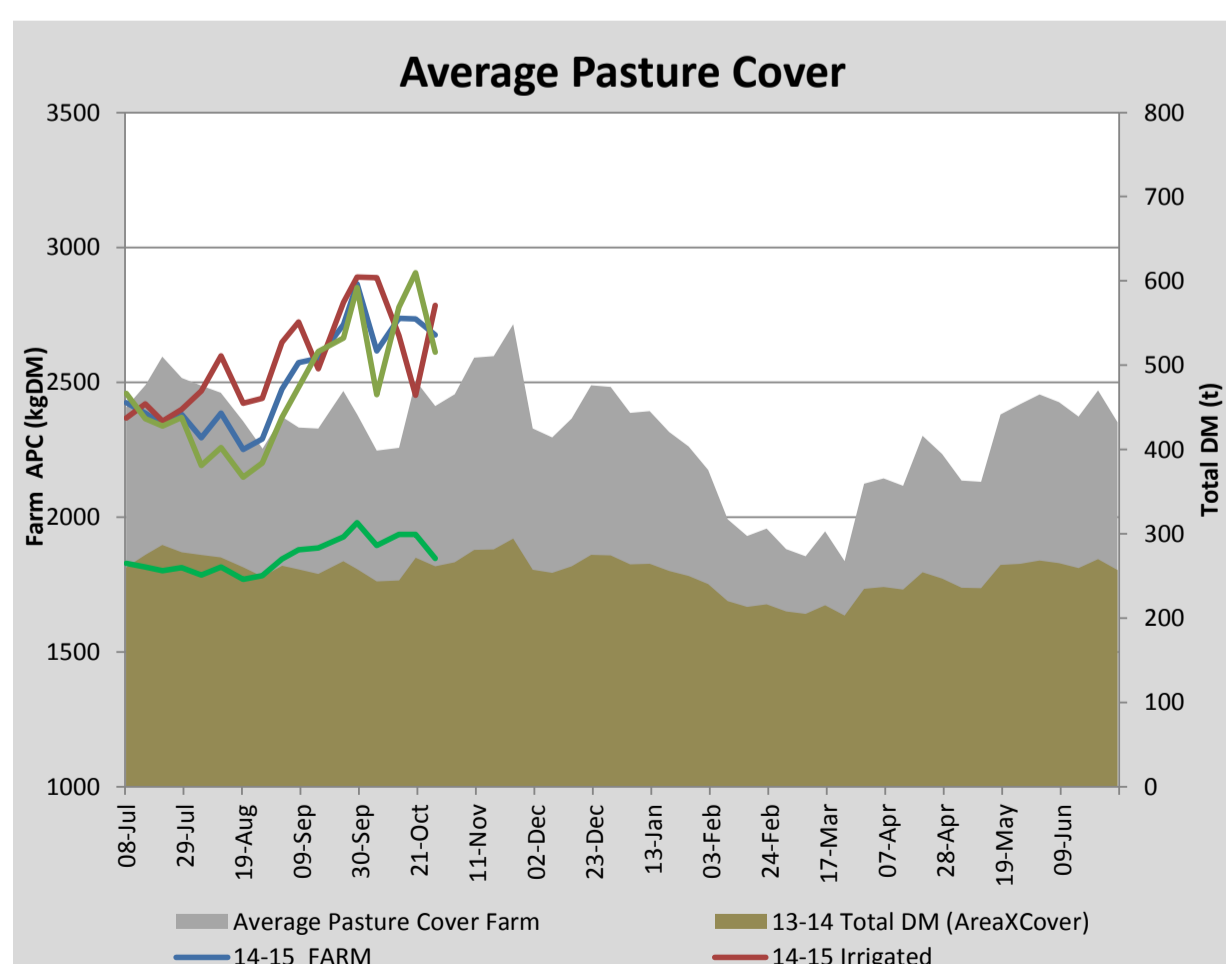
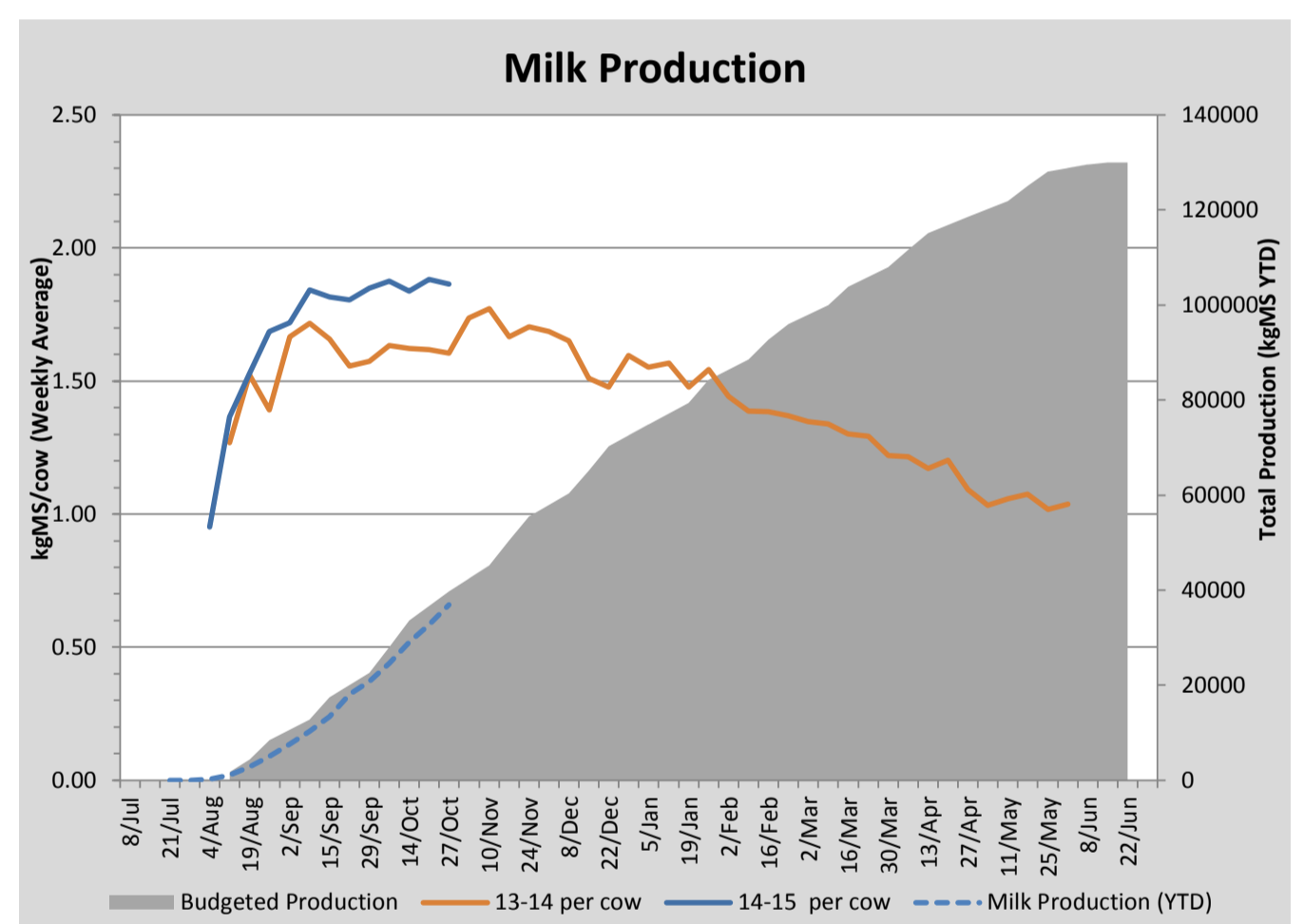
Key Summary Points

- 1 Average pasture cover dropped slightly this week to 2675kgDM/ha with 8ha of the milking platform being cut for silage.
- 2 Heifers were fixed time AI this week. A CIDR synchronisation program was used, with insemination on heat detection (tail paint) on day -1 followed by blanket insemination of the remainder on the following day. 40% of heifers presented on day -1. We are using a double PG synchronisation program on the cows and mating will start on the 1/10
- 3 Cows were condition scored this week with the average score being 4.5.

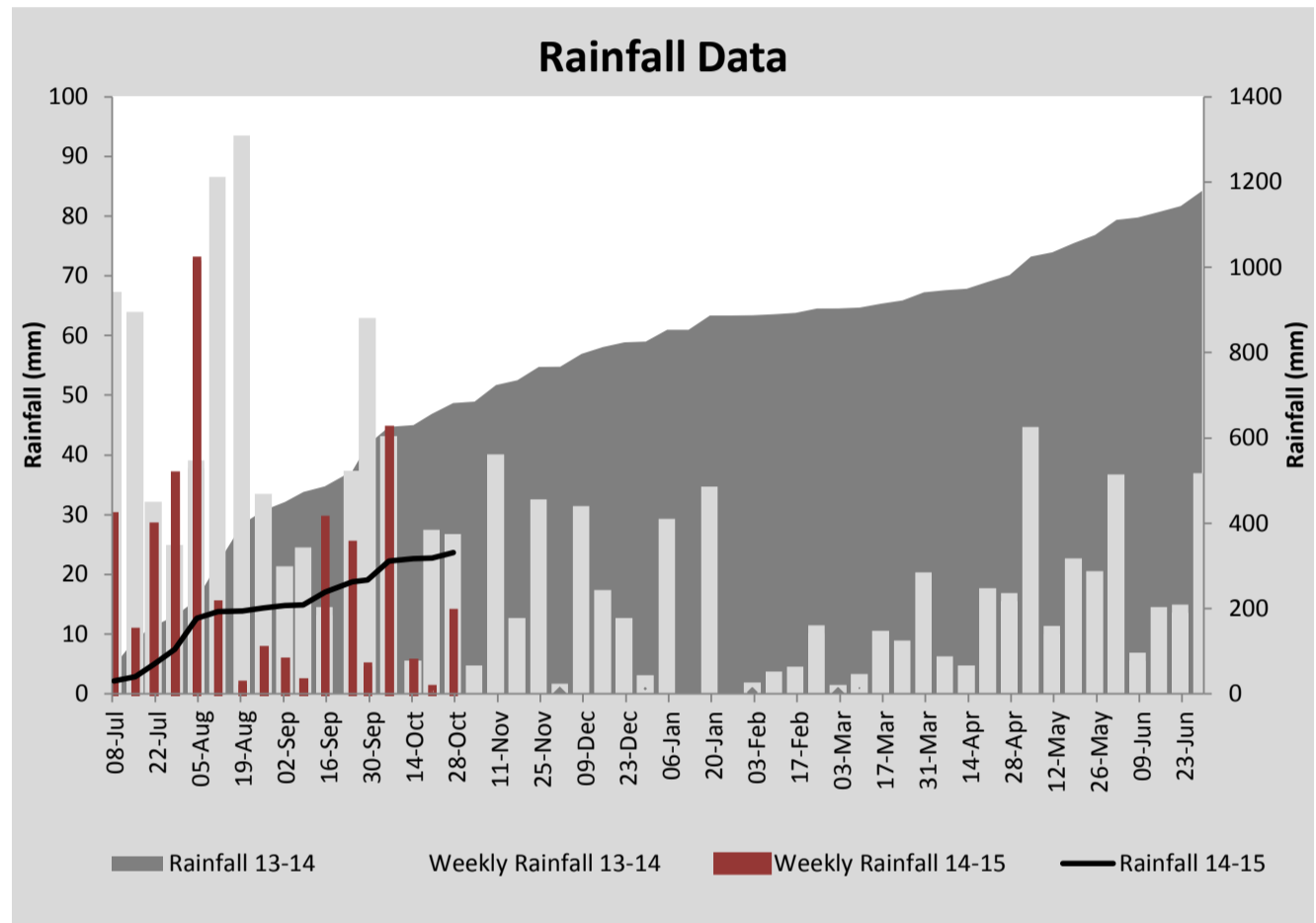
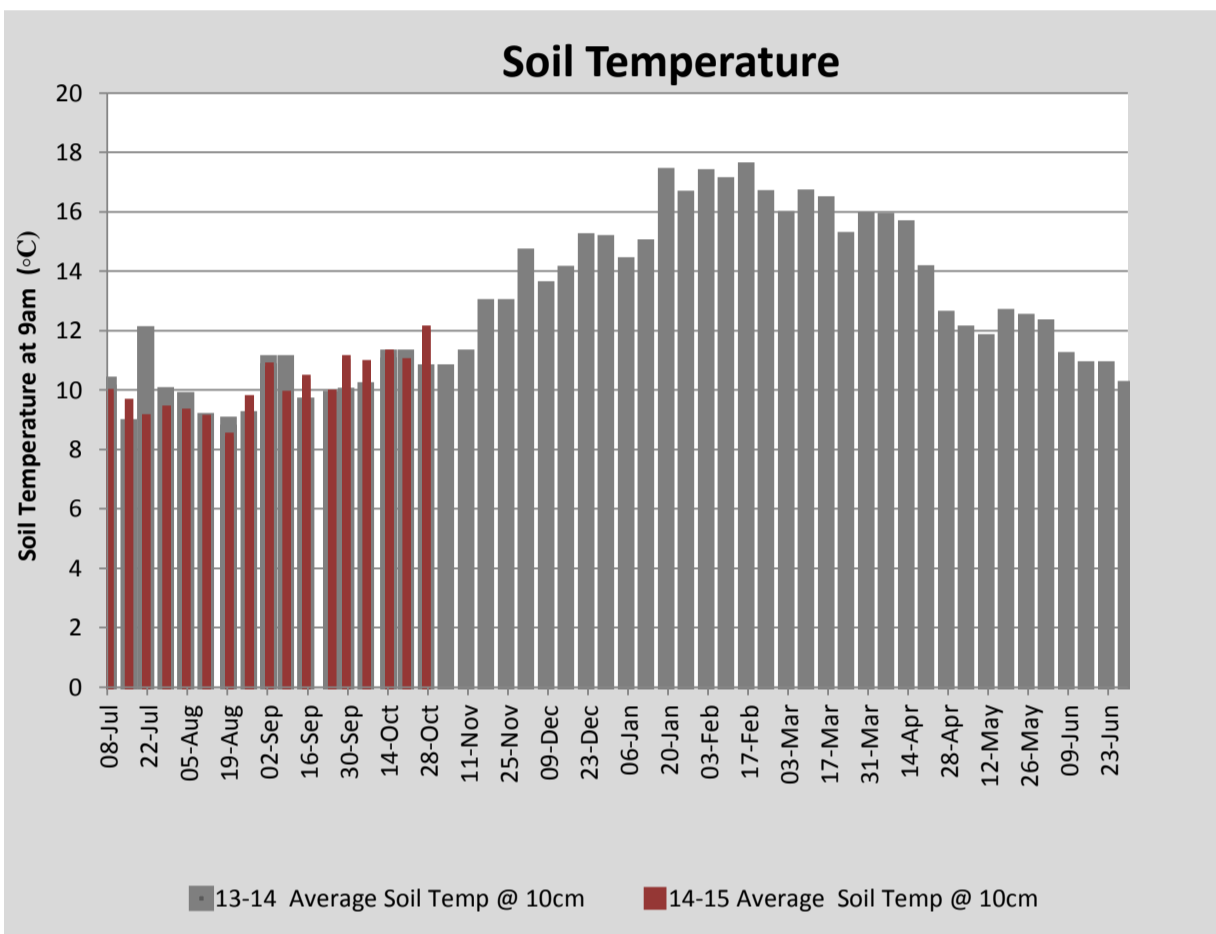
PASTURE INFORMATION	Farm			Irrigated			Rain-fed		
	Last Week	This Week	Variation	Last Week	This Week	Variation	Last Week	This Week	Variation
Grazed milking area (ha)	109.3	101.3	-8.0	41.0	41.0	0.0	68.3	60.3	8
Rotation Length (days)	32	27	-4	27	29	2	35	26	-9
Grazing allocation per day (ha)	3.5	3.7	0.3	1.5	1.4	-0.1	2.0	2.3	0.4
Average time since last grazed (days)	42	39	-2	44	46	2	40	35	-5
Leaf appearance rate (days per leaf)	12	11	-1	12	11	-1	12	11	-1
Average Pasture Cover (kgDM/ha)	2735	2675	-60	2451	2783	332	2906	2610	-296
Pasture Growth Rate (kgDM/ha/day)	60	67	7	53	77	24	64	59	-5
Post Grazing Biomass (kgDM/ha)	1488	1830	342						
Nitrogen applied YTD (kgN/ha)	56	75	19	0	21	21	0	18	18

*Please note all pasture calculations detailed above are based on the current Grazed Milking Area

MILK PRODUCTION	Last Week	This Week	Variation
Average No. cows in milk (vat)	346	346	0
Litres per cow	26.0	25.8	-0.1
% Fat	4.13	4.09	-0.04
% Protein	3.02	3.14	0.12
MS/cow/day	1.88	1.86	-0.02
MS/ha/day	5.76	5.71	-0.05
BMCC	119	111	
Average Liveweight (kg)	486	486	
	Budget	To Date	Variation
Total Milk Production (kgMS)	39,757	36,932	93%
MS/ha YTD	355	357	2



Last 7 days					
Milkers Diet	kg DM	MJ ME	CP (%)	NDF (%)	\$/cow
Pasture Intake	17.0	12.2	18.5	45.4	0.0
Concentrates	4.0	12.8	12.3	16.5	0.0
Silage	0.0	0.0	0.0	0.0	0.0
Grazed forage	0.0	0.0	0.0	0.0	0.0
Other feeds	0.0	0.0	0.0	0.0	0.0
Total	21	258.6	17.3	39.9	0
Target		191	16-18	>33	0



Analysis			
Expected growth rate next 7 days (kgDM/ha/day)	55	Target Leaf Grazing Stage	2.5-3.0
Total Demand from Pasture (kgDM/ha/day)	53	Predicted APC 7 days time	2692
APC balance (kgDM/ha/day)	2	Predicted APC Change	16.9

Discussion

Average pasture cover on the milking platform has dropped to 2675kgDM/ha this week with 8ha being cut for silage. We have been targeting older cocksfoot based pastures for silage conservation so as to maintain the quality in cocksfoot before growth turns reproductive. We are currently holding a 27 day rotation. We aim to hold this into the coming week, dropping paddocks for silage when required. 2ha has been sprayed out ready for a Pasja trial. We started irrigating this week with 30mm being applied through the centre pivot. With hollows still remaining quite wet and the banks starting to dry out, we will adjust the variable rate prescription on the pivot to prevent waterlogging in the hollows. A CIDR fixed time synchronisation program has been completed this week on the heifers with insemination on heat detection (tail paint) on day -1 followed by blanket of the remainder on the following day. 40% of heifers presented on day -1. We are using a double PG synchronisation program on the cows with mating to start on the 1st of November. Cows that have not presented by day five of mating will be treated with either CIDRs or Que Mates to ensure a high three week submission rate. The cows have an average condition score of 4.5. The lucerne crop on the run off has started to respond to the warmer soil temperatures over the past fortnight. We will start to irrigate this crop along with 4.2 ha of pea and oat mix with the aim to cut both these for silage early December.

27 October 2014

