

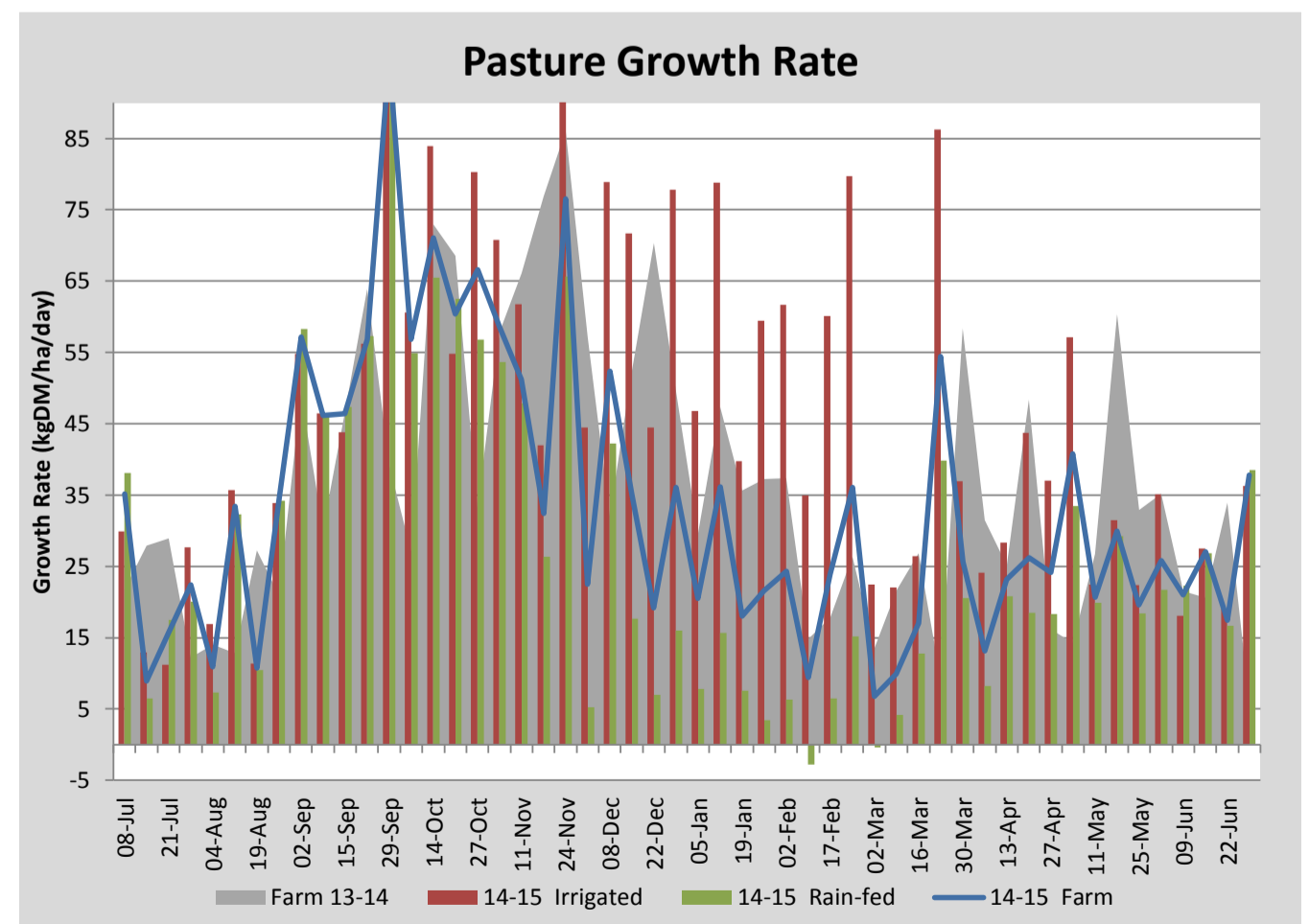
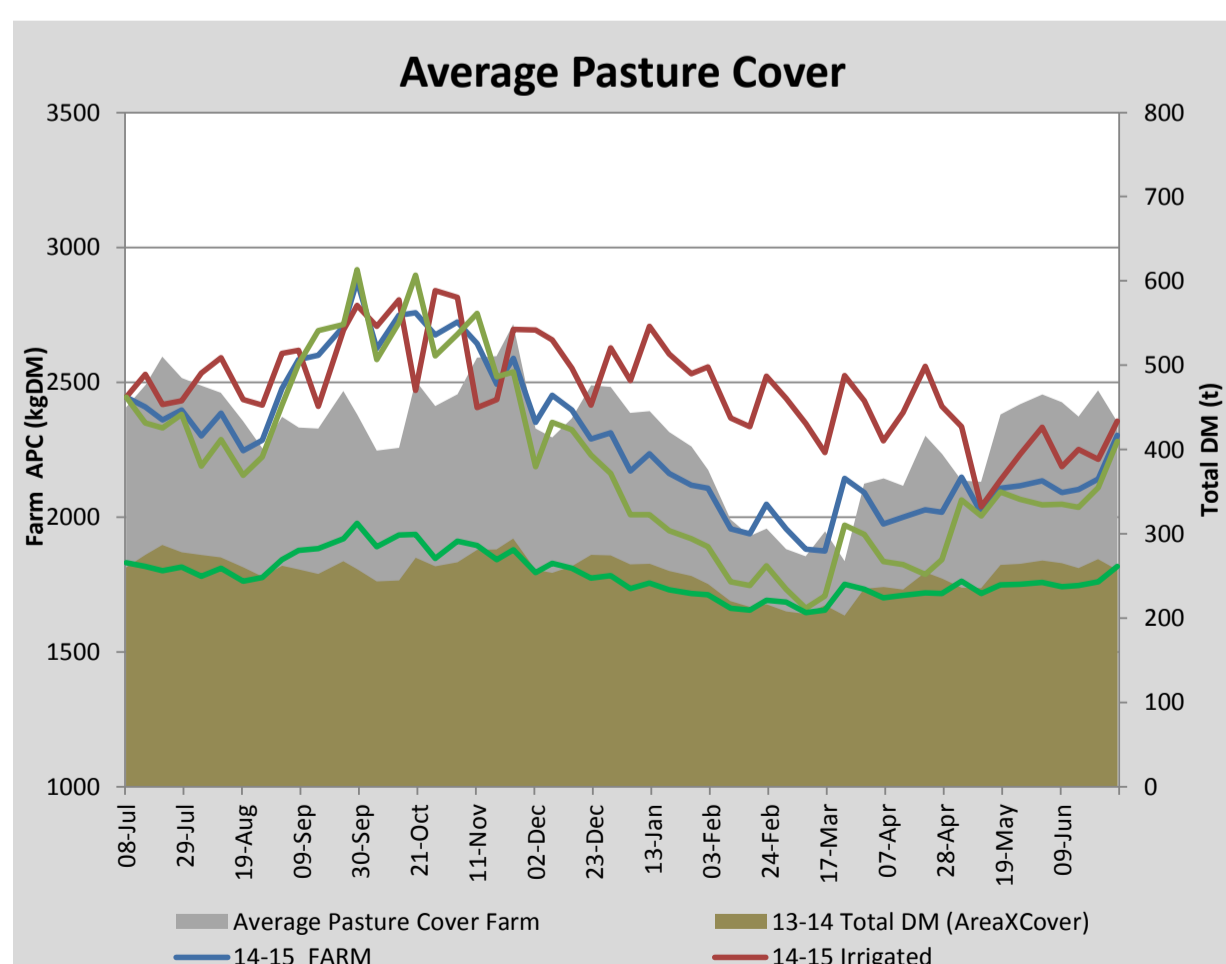
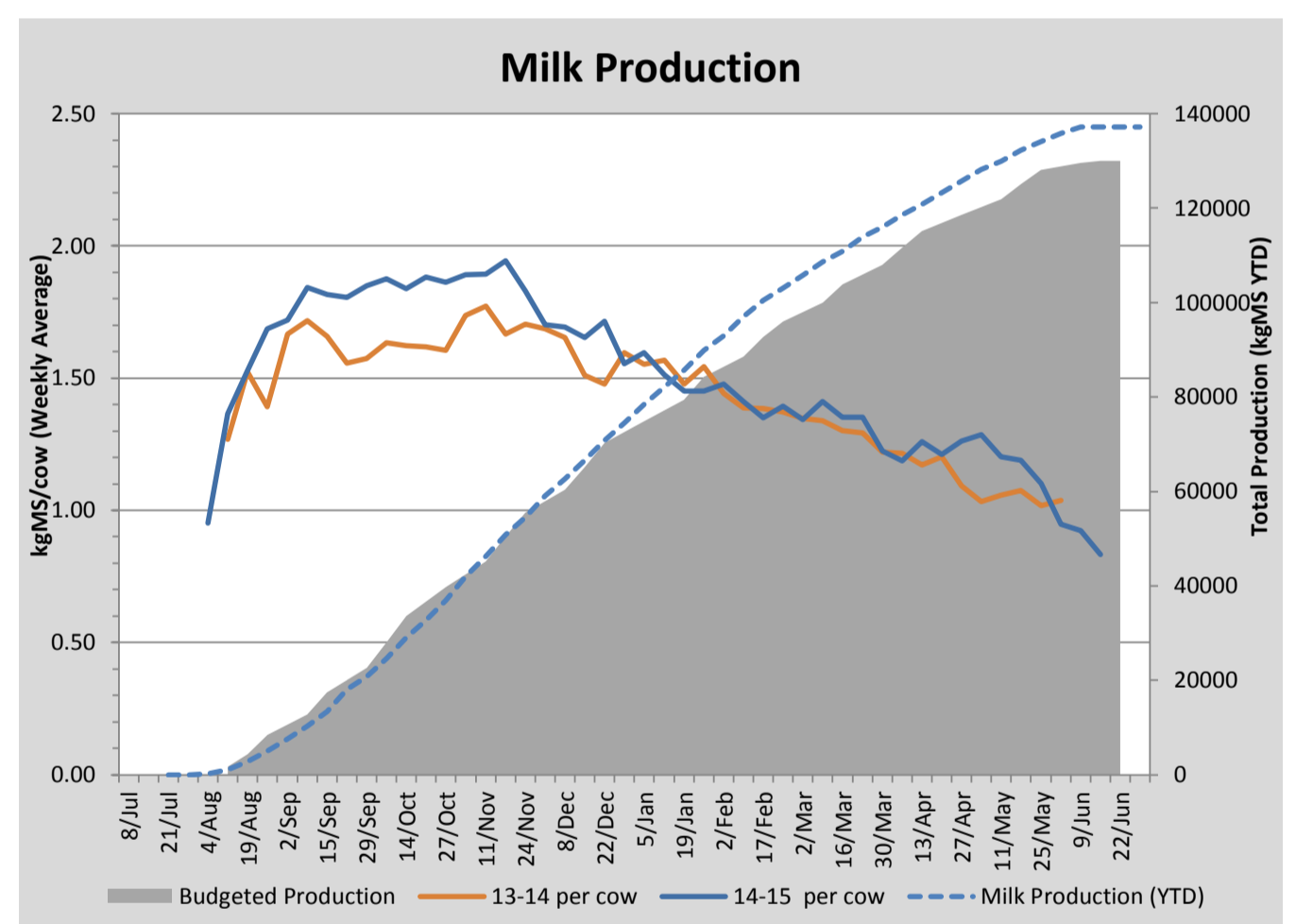
## Key Summary Points

- 1 Average pasture cover increased to 2303kgDM/ha this week with increased soil temperature and good responses to urea applied the previous week.
- 2 The milking platform remains completely destocked this week with 240 cows and 50 calves grazing the run-off. A mob of the lighter cows and the R2 heifers will be returned to the milking platform this coming week.
- 3 Other work being complete on farm at the moment includes setting up calf sheds, painting at the dairy, tree removal and resurfacing of all laneways with a stone crusher.

| PASTURE INFORMATION                   | Farm      |           |           | Irrigated |           |           | Rain-fed  |           |           |
|---------------------------------------|-----------|-----------|-----------|-----------|-----------|-----------|-----------|-----------|-----------|
|                                       | Last Week | This Week | Variation | Last Week | This Week | Variation | Last Week | This Week | Variation |
| Grazed milking area (ha)              | 113.6     | 113.6     | 0.0       | 35.1      | 35.1      | 0.0       | 78.4      | 78.4      | 0         |
| Rotation Length (days)                | .         | .         | .         | .         | .         | .         | .         | .         | .         |
| Grazing allocation per day (ha)       | .         | .         | .         | .         | .         | .         | .         | .         | .         |
| Average time since last grazed (days) | .         | .         | .         | .         | .         | .         | .         | .         | .         |
| Leaf appearance rate (days per leaf)  | 19        | 19        | 0         | 19        | 19        | 0         | 19        | 19        | 0         |
| Average Pasture Cover (kgDM/ha)       | 2141      | 2303      | 162       | 2213      | 2355      | 143       | 2109      | 2279      | 170       |
| Pasture Growth Rate (kgDM/ha/day)     | 17        | 38        | 20        | 19        | 36        | 17        | 17        | 39        | 22        |
| Post Grazing Biomass (kgDM/ha)        | -         | -         | .         |           |           |           |           |           |           |
| Nitrogen applied YTD (kgN/ha)         | 188       | 188       | 0         | 16        | 0         |           | 17        | 0         |           |

\*Please note all pasture calculations detailed above are based on the current Grazed Milking Area

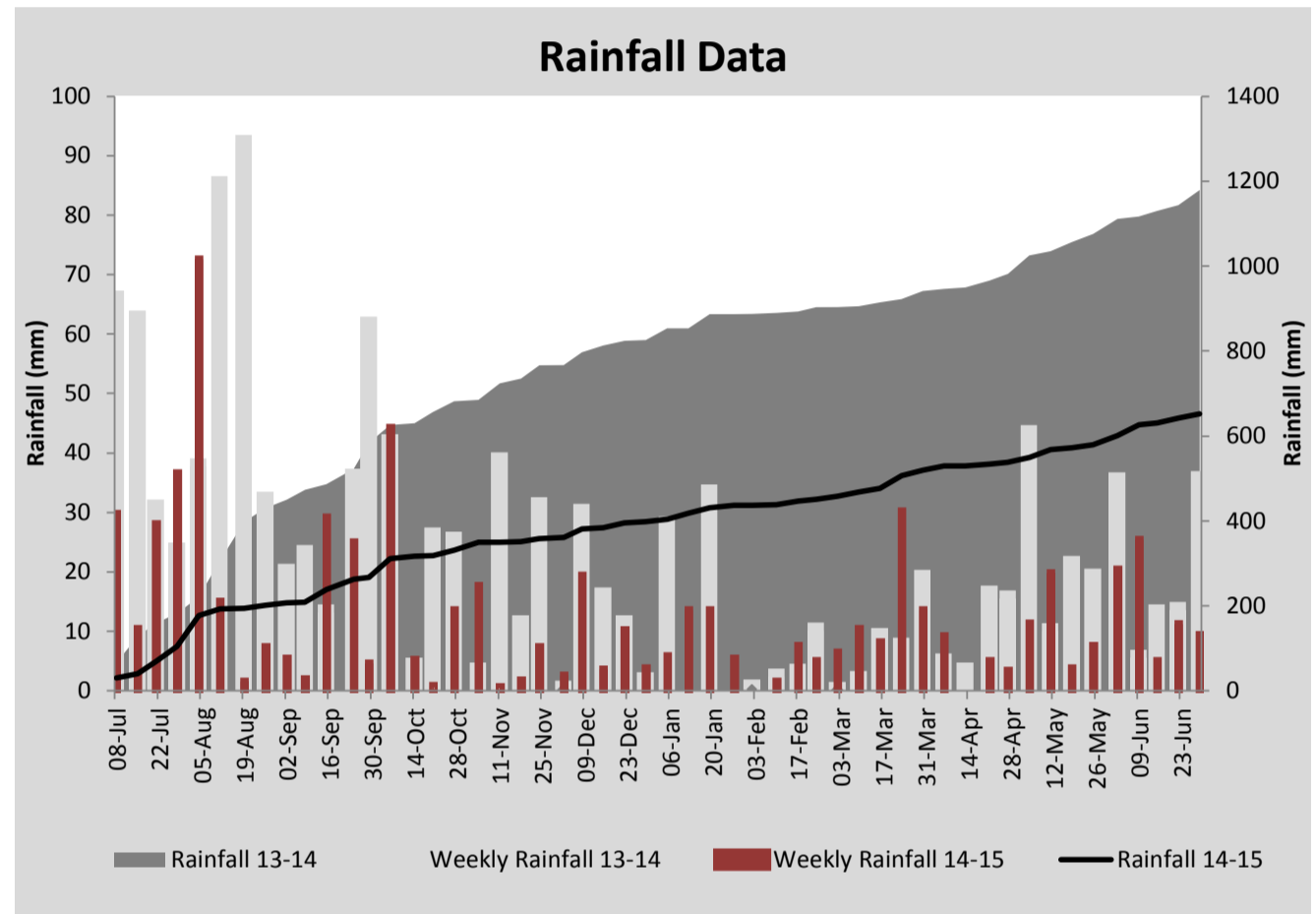
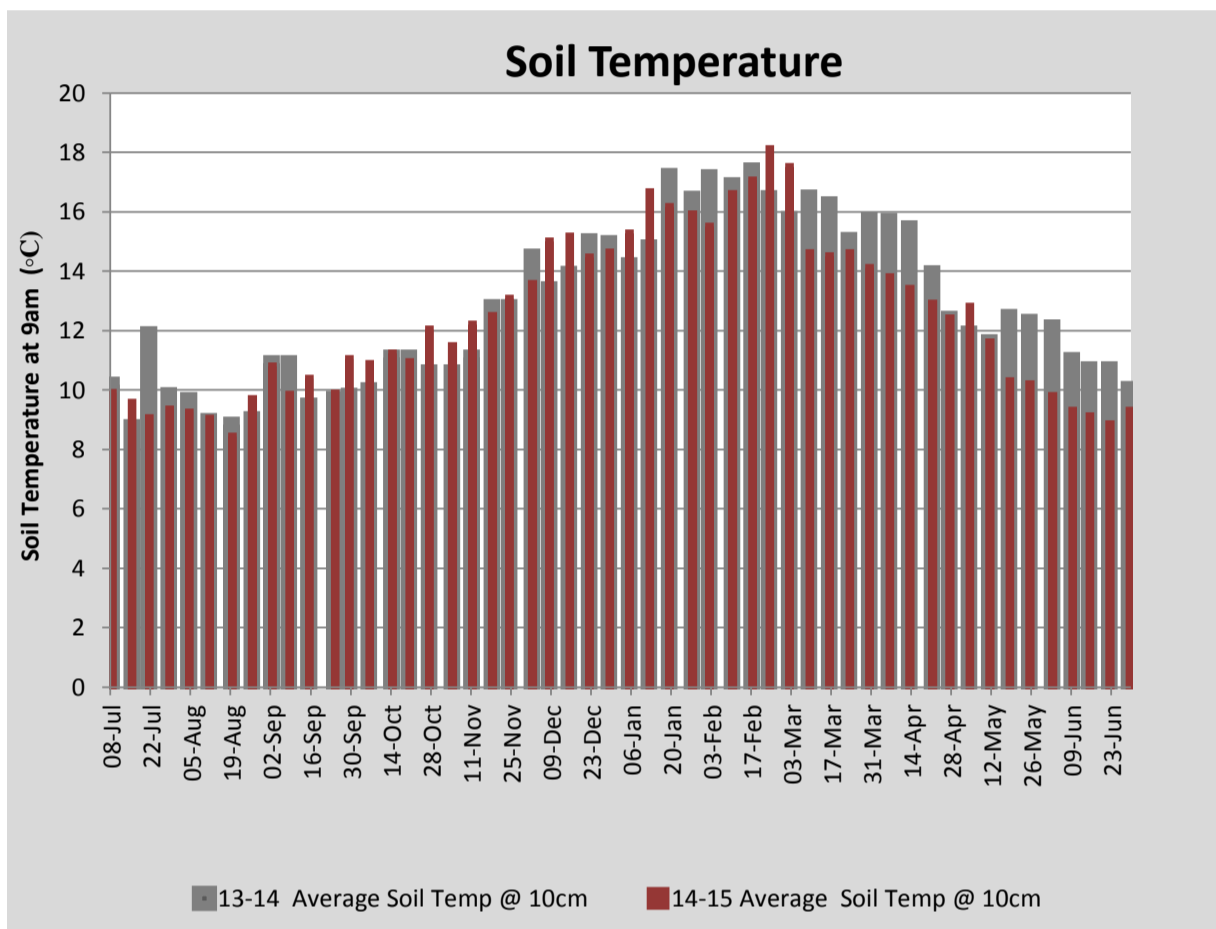
| MILK PRODUCTION                | Last Week | This Week | Variation |
|--------------------------------|-----------|-----------|-----------|
| Average No. cows in milk (vat) | 0         | 0         | 0         |
| Litres per cow                 | #N/A      | #N/A      | #N/A      |
| % Fat                          | #N/A      | #N/A      | #N/A      |
| % Protein                      | #N/A      | #N/A      | #N/A      |
| MS/cow/day                     | #N/A      | #N/A      | #N/A      |
| MS/ha/day                      | #N/A      | #N/A      | #N/A      |
| BMCC                           |           |           | #VALUE!   |
| Average Liveweight (kg)        | .         | .         | #VALUE!   |
|                                | Budget    | To Date   | Variation |
| Total Milk Production (kgMS)   | 130,000   | 137,159   | 106%      |
| MS/ha YTD                      | 1161      | 1248      | 87        |



| Last 7 days    |          |            |                |                |          |
|----------------|----------|------------|----------------|----------------|----------|
| Milkers Diet   | kg DM    | MJ ME      | CP (%)         | NDF (%)        | \$/cow   |
| Pasture Intake | 0.0      | 0.0        | 0.0            | 0.0            | 0.0      |
| Concentrates   | 0.0      | 0.0        | 0.0            | 0.0            | 0.0      |
| Silage         | 0.0      | 0.0        | 0.0            | 0.0            | 0.0      |
| Grazed forage  | 0.0      | 0.0        | 0.0            | 0.0            | 0.0      |
| Other feeds    | 0.0      | 0.0        | 0.0            | 0.0            | 0.0      |
| <b>Total</b>   | <b>0</b> | <b>0</b>   | <b>#DIV/0!</b> | <b>#DIV/0!</b> | <b>0</b> |
| <b>Target</b>  |          | <b>191</b> | <b>16-18</b>   | <b>&gt;33</b>  | <b>0</b> |



Laneway resurfaced with the stone crusher



| Analysis                                       |    |                           |         |
|--|----|---------------------------|---------|
| Expected growth rate next 7 days (kgDM/ha/day) | 25 | Target Leaf Grazing Stage | 2.5-3.0 |
| Total Demand from Pasture (kgDM/ha/day)        | 0  | Predicted APC 7 days time | 2478    |
| APC balance (kgDM/ha/day)                      | 25 | Predicted APC Change      | 175.0   |

## Discussion

Average pasture cover increased to 2303kgDM/ha this week with milder weather and good responses to urea (40kg N/ha) applied the previous week. The milking platform remains destocked this week however with cover on track to reach 2400kgDM/ha by calving (1st August) we will be returning the lighter condition cows and R2s to the platform. This will help maintain the feed wedge and the better quality pasture should improve weight gain. The light cows and heifers are being allocated 16 kgDM/head/day. Cows above CS 4.5 are receiving 12kgDM/cow/day. Preparation work on the calf sheds is almost complete. The dairy pit walls and vat room floors are being painted with 2 pack epoxy paint which will improve cleaning. Work continues on the removal and burning of cypress pine hedges. All laneways are being resurfaced with a stone crusher and rolled to a smooth finish with the tractor.

# 29 June 2015

