

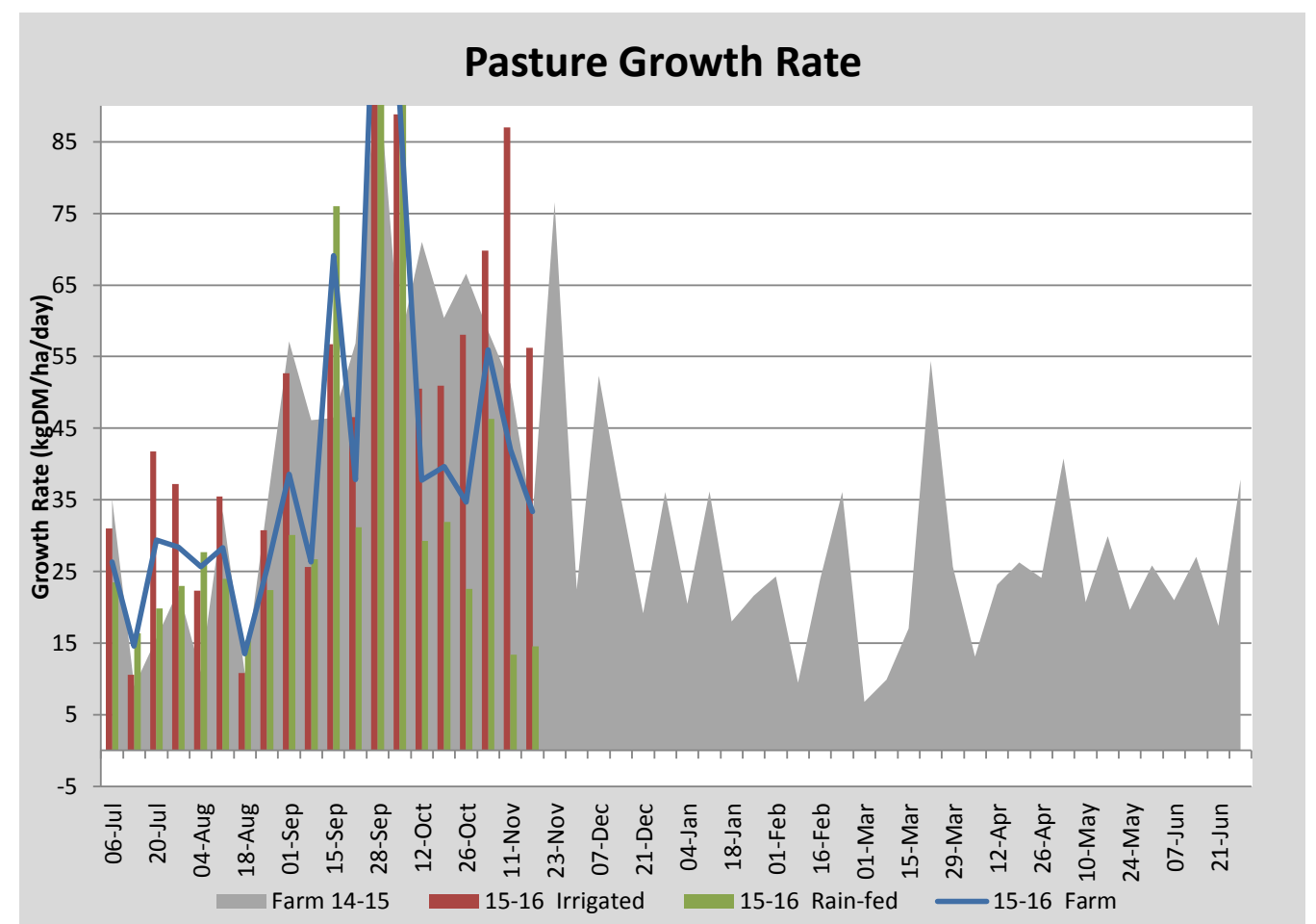
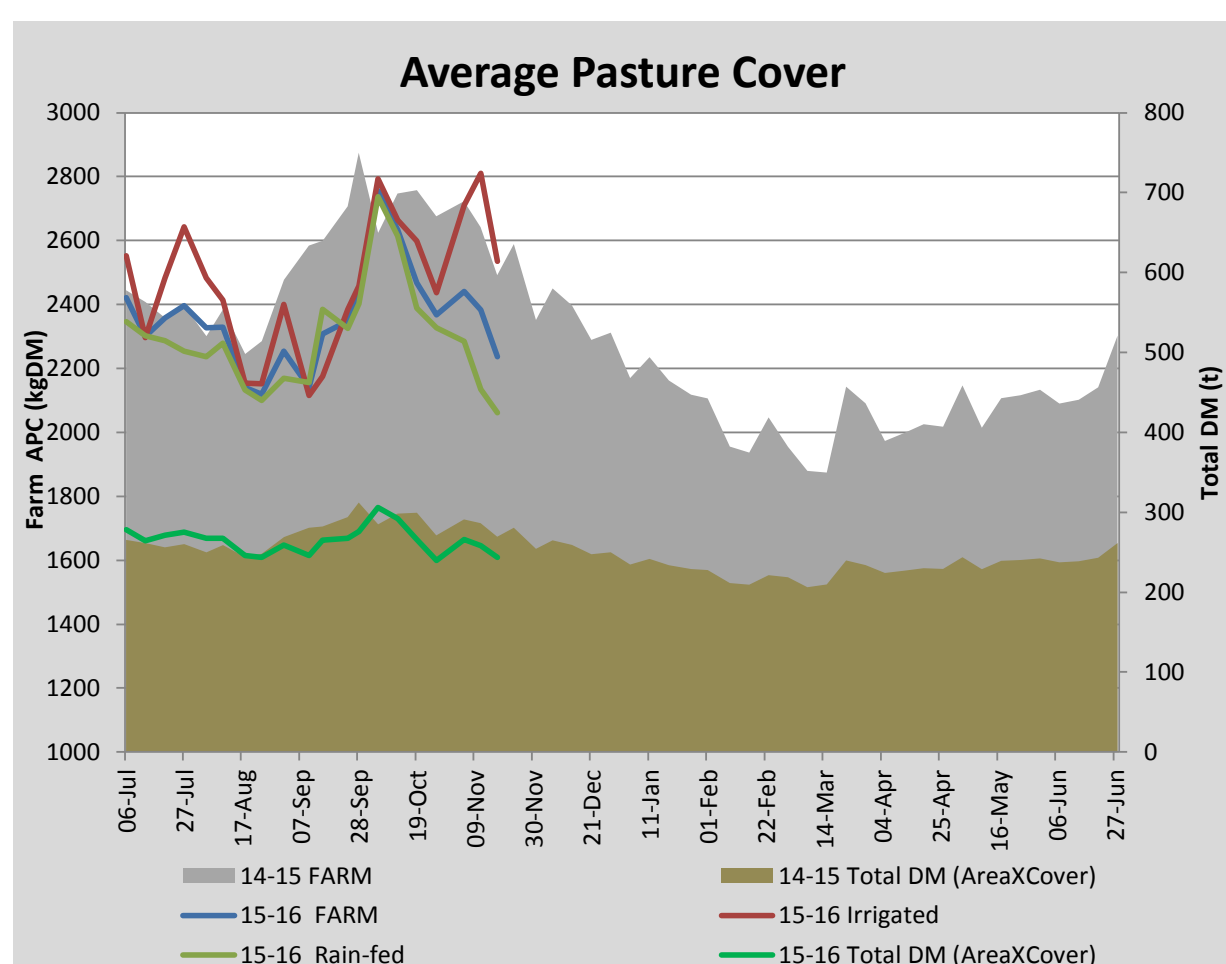
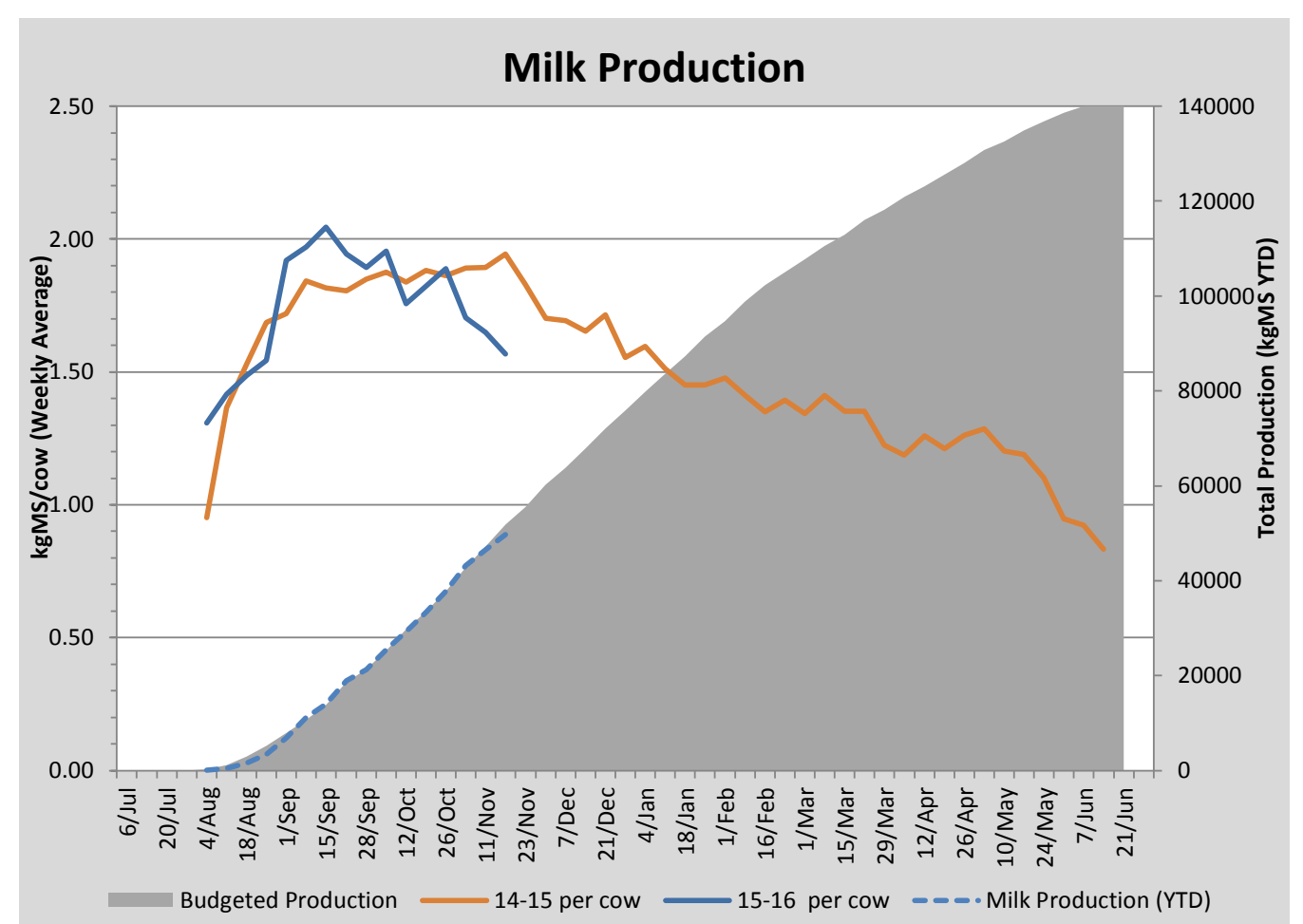
## Key Summary Points

- 1 Average pasture cover dropped significantly this week to 2236 kg DM/ha. Growth rates on the dryland have held due to a surge in reproductive growth.
- 2 Per cow MS production continues to decrease this week, down to 1.57kg MS/cow/day with DM allocation being restricted to 17kgDM/cow/day. 40 cows will be culled and low producing heifers dried off this coming week to reduce pasture demand on the milking platform.
- 3 Focus for the coming week is to hold the rotation on irrigated portion of the platform at 30, or more days. We will be extending rotation on the run-off to 150 days, supplementing young stock with concentrate as required.

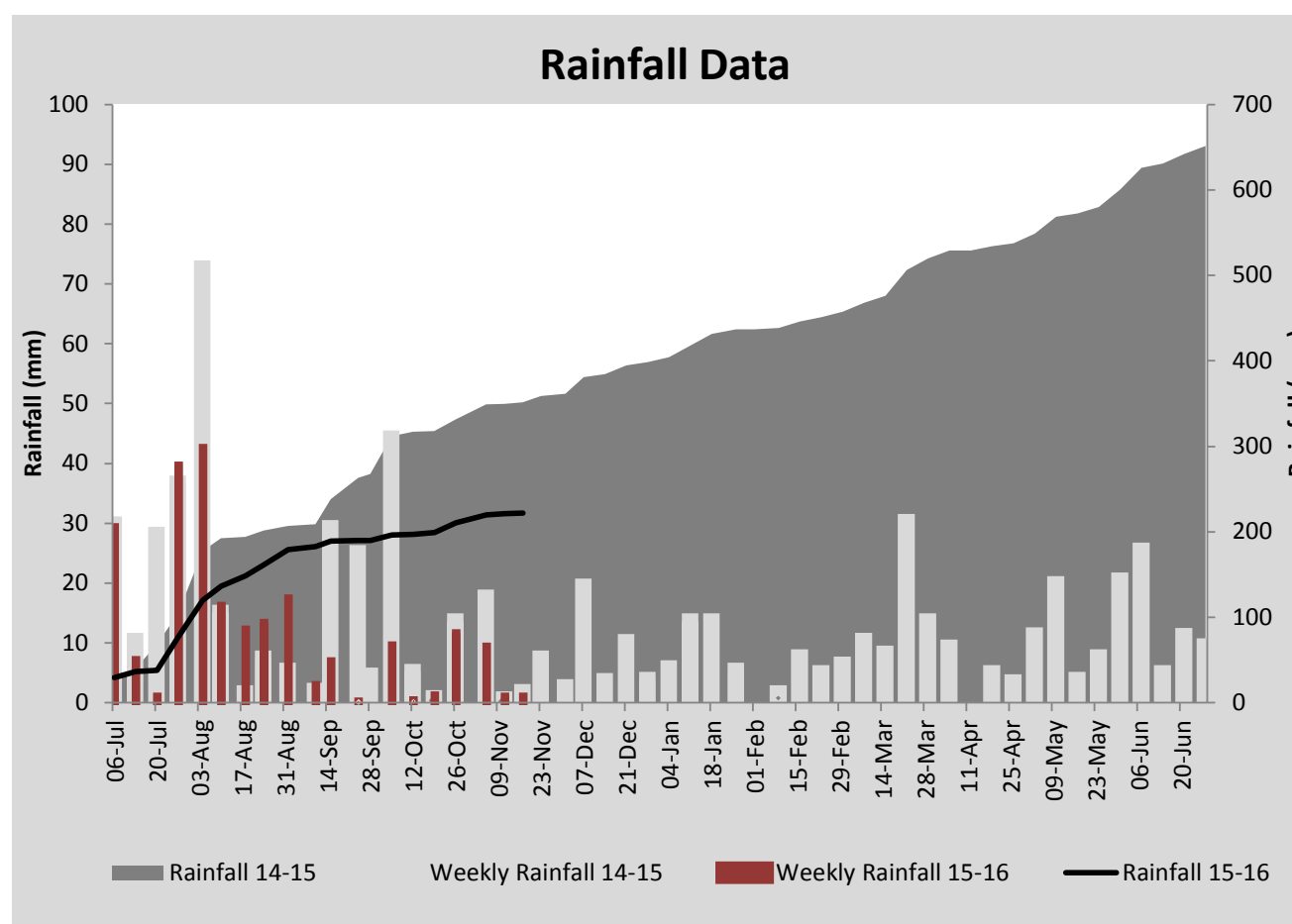
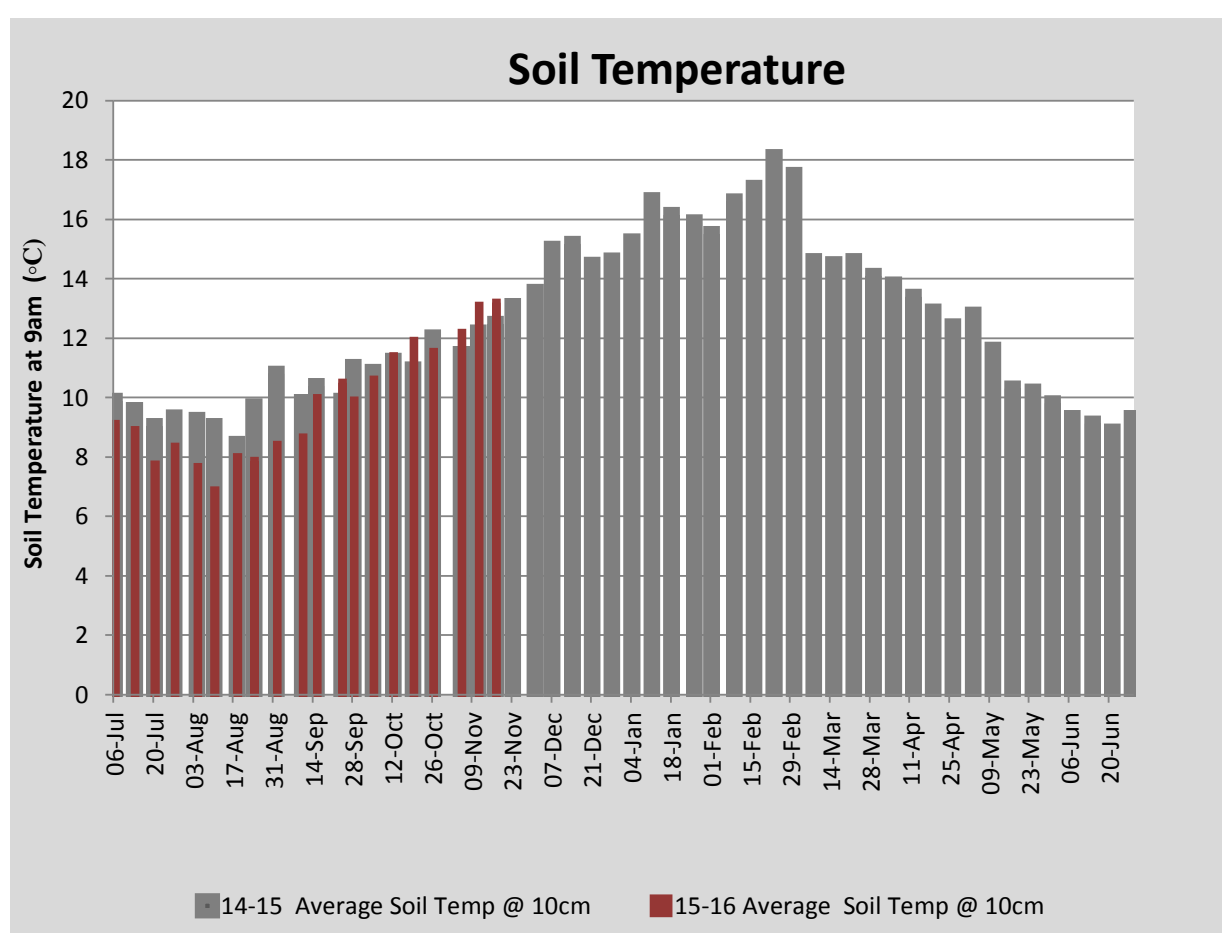
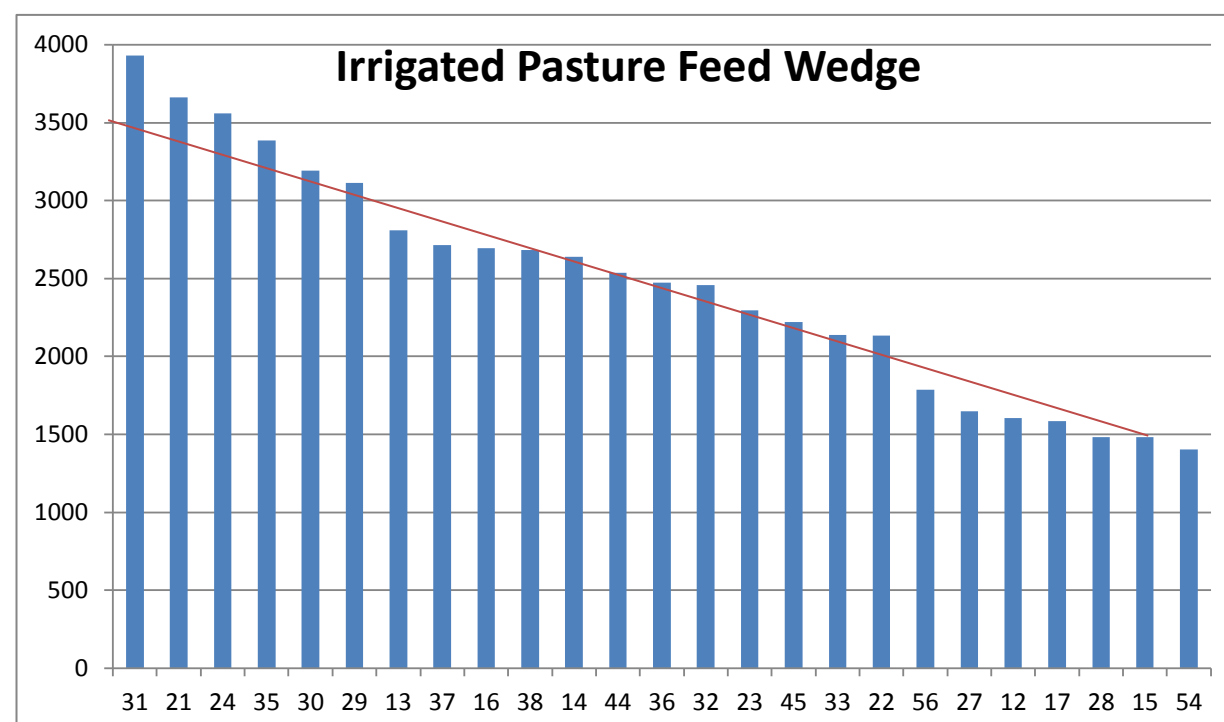
PASTURE INFORMATION	Farm			Irrigated			Rain-fed		
	Last Week	This Week	Variation	Last Week	This Week	Variation	Last Week	This Week	Variation
Grazed milking area (ha)	108.4	109.1	0.7	42.2	40.1	-2.1	66.9	68.9	2
Rotation Length (days)	50	55	5	31	27	-4	77	138	61
Grazing allocation per day (ha)	2.2	2.0	-0.2	1.3	1.5	0.2	0.9	0.5	-0.4
Average time since last grazed (days)	41	36	-5	43	29	-14	40	40	0
Leaf appearance rate (days per leaf)	10	10	0	10	10	0	10	10	0
Average Pasture Cover (kgDM/ha)	2383	2236	-147	2810	2536	-274	2135	2062	-74
Pasture Growth Rate (kgDM/ha/day)	42	33	-9	87	56	-31	13	15	1
Post Grazing Biomass (kgDM/ha)	1470	1473	3						
Nitrogen applied YTD (kgN/ha)	49	53	4	0	12	12	0	0	0

\*Please note all pasture calculations detailed above are based on the current Grazed Milking Area

MILK PRODUCTION	Last Week	This Week	Variation
Average No. cows in milk (vat)	367	369	2
Litres per cow	22.2	21.1	-1.1
% Fat	4.24	4.22	-0.02
% Protein	3.16	3.16	0.00
MS/cow/day	1.65	1.57	-0.08
MS/ha/day	5.35	5.12	-0.23
BMCC	186,167	149,286	-36,881
Average Liveweight (kg)	0	0	0
	Budget	To Date	Variation
Total Milk Production (kgMS)	51,867	49,683	96%
MS/ha YTD	455	479	24



Last 7 days					
Milkers Diet	kg DM	MJ ME	CP (%)	NDF (%)	\$/cow
Pasture Intake	11.1	11.0	19.0	54.0	0.0
Concentrates	5.0	12.5	16.0	16.5	0.0
Silage	0.9	11.5	15.0	49.0	0.0
Grazed forage	0.0	0.0	0.0	0.0	0.0
Other feeds	0.0	0.0	0.0	0.0	0.0
<b>Total</b>	<b>17</b>	<b>195</b>	<b>17.9</b>	<b>42.7</b>	<b>0</b>
<b>Target</b>		<b>191</b>	<b>16-18</b>	<b>&gt;33</b>	<b>0</b>



Analysis			
Expected growth rate next 7 days (kgDM/ha/day)	22	Target Leaf Grazing Stage	2.5-3.0
Total Demand from Pasture (kgDM/ha/day)	25	Predicted APC 7 days time	2209
APC balance (kgDM/ha/day)	-4	Predicted APC Change	-26.6

## Discussion

Average pasture cover continued to fall this week across the milking platform. Dryland growth rates held this week however, this would be mainly attributed to a surge in reproductive growth. We are observing very little re-growth on dryland paddocks. With a feed deficit rapidly occurring we will be culling 40 cows and also drying off all low producing heifers this coming week. Brassica forage crops are (4ha turnips, 2ha pasja/rape) growing well, were sprayed for cut worms last week and are currently being irrigated with dairy effluent. A further 20 cows will be culled early next month to bring the pasture demand on the platform down to 25kgDM/ha/day. Per cow MS production continues to fall this week, down to 1.57kgMS/cow/day with DM allocation being restricted to 17kgDM/cow/day. We will be increasing concentrate levels in the ration to 6kgDM/cow/day this coming week. The rotation on the run off will be extended to 150 days over the coming weeks utilising temporary fencing and portable water troughs to facilitate greater subdivision of paddocks. Young stock will be allocated 4kgDM/head/day with concentrates used to fill any pasture deficits.

# 17 November 2015

