

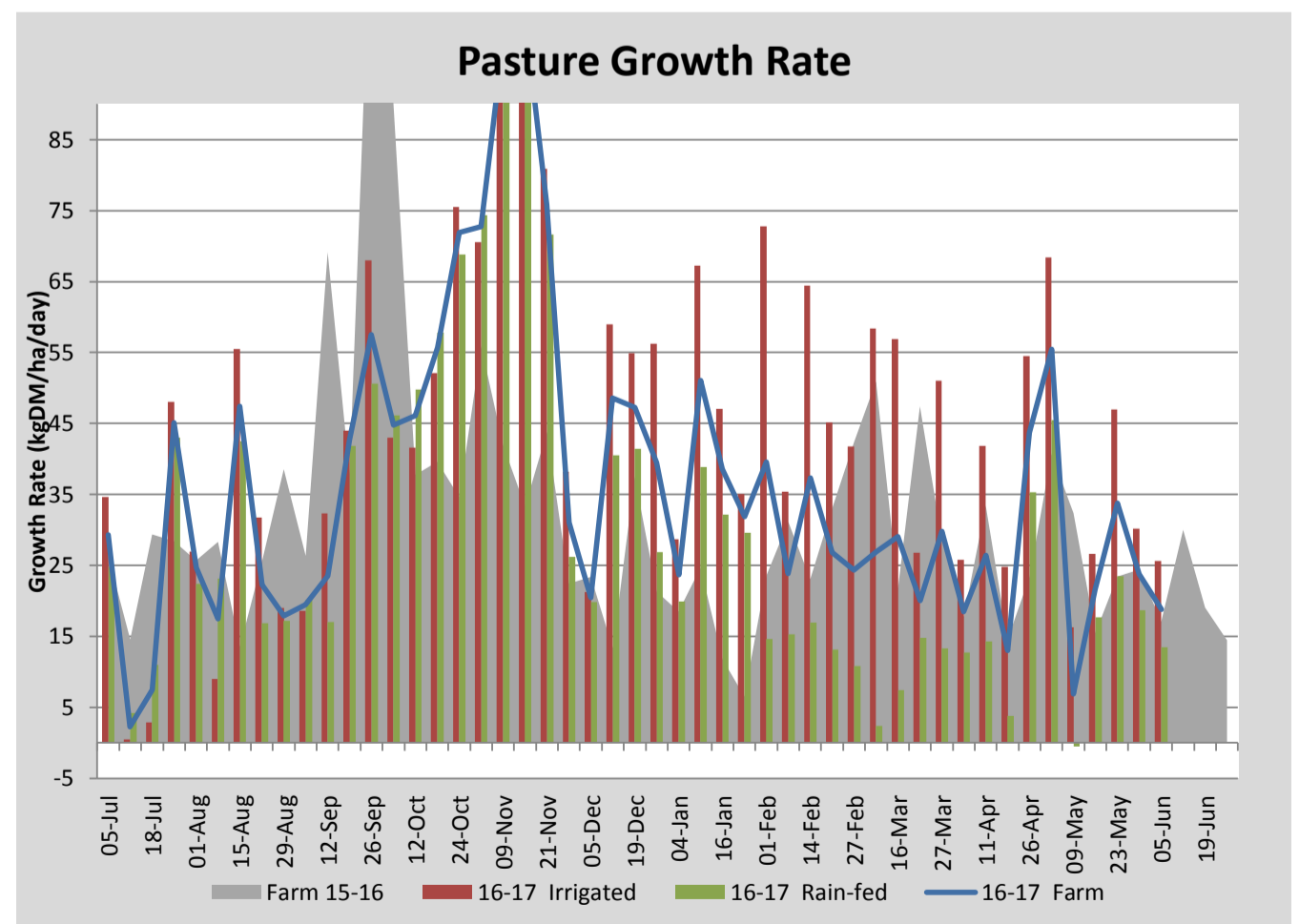
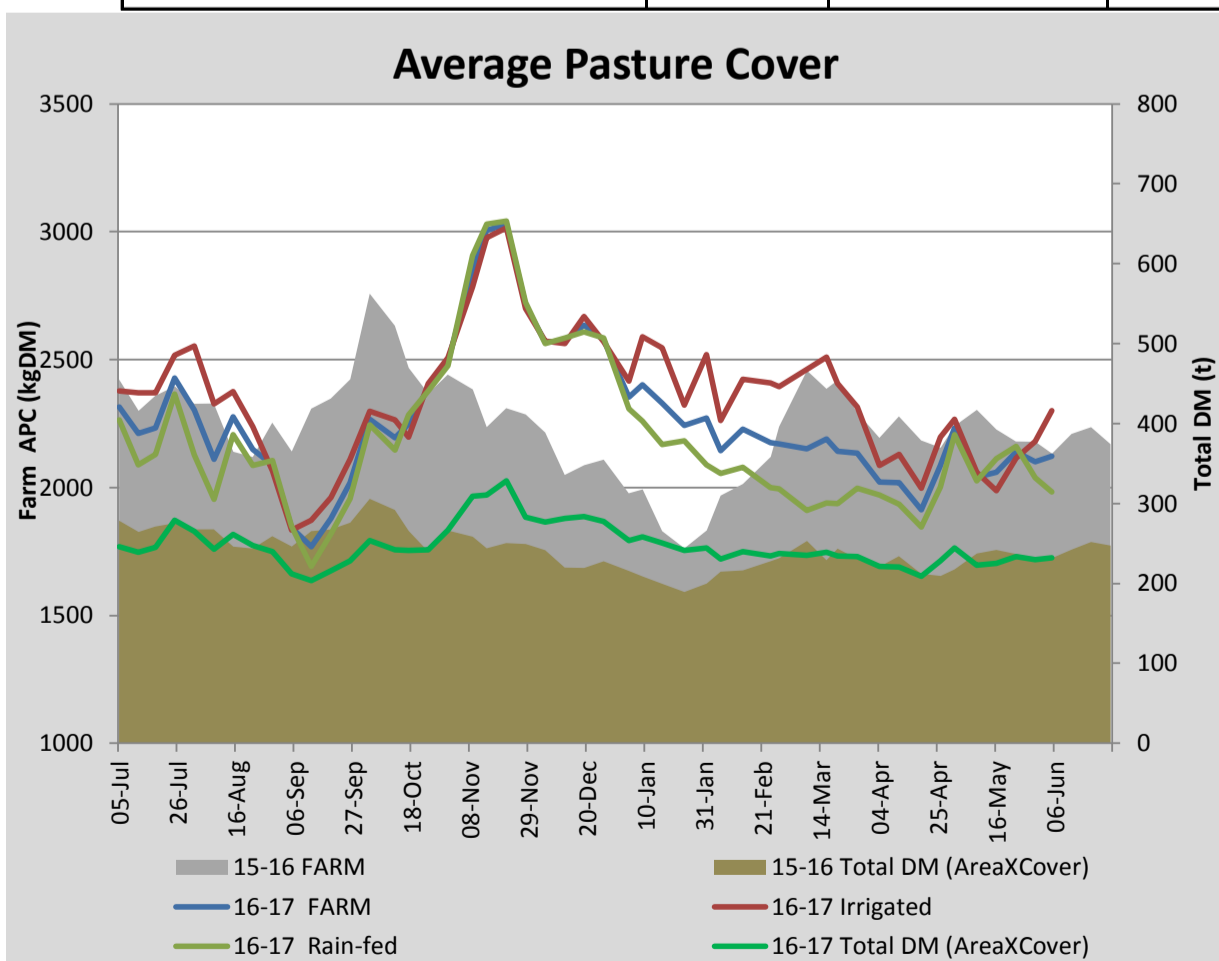
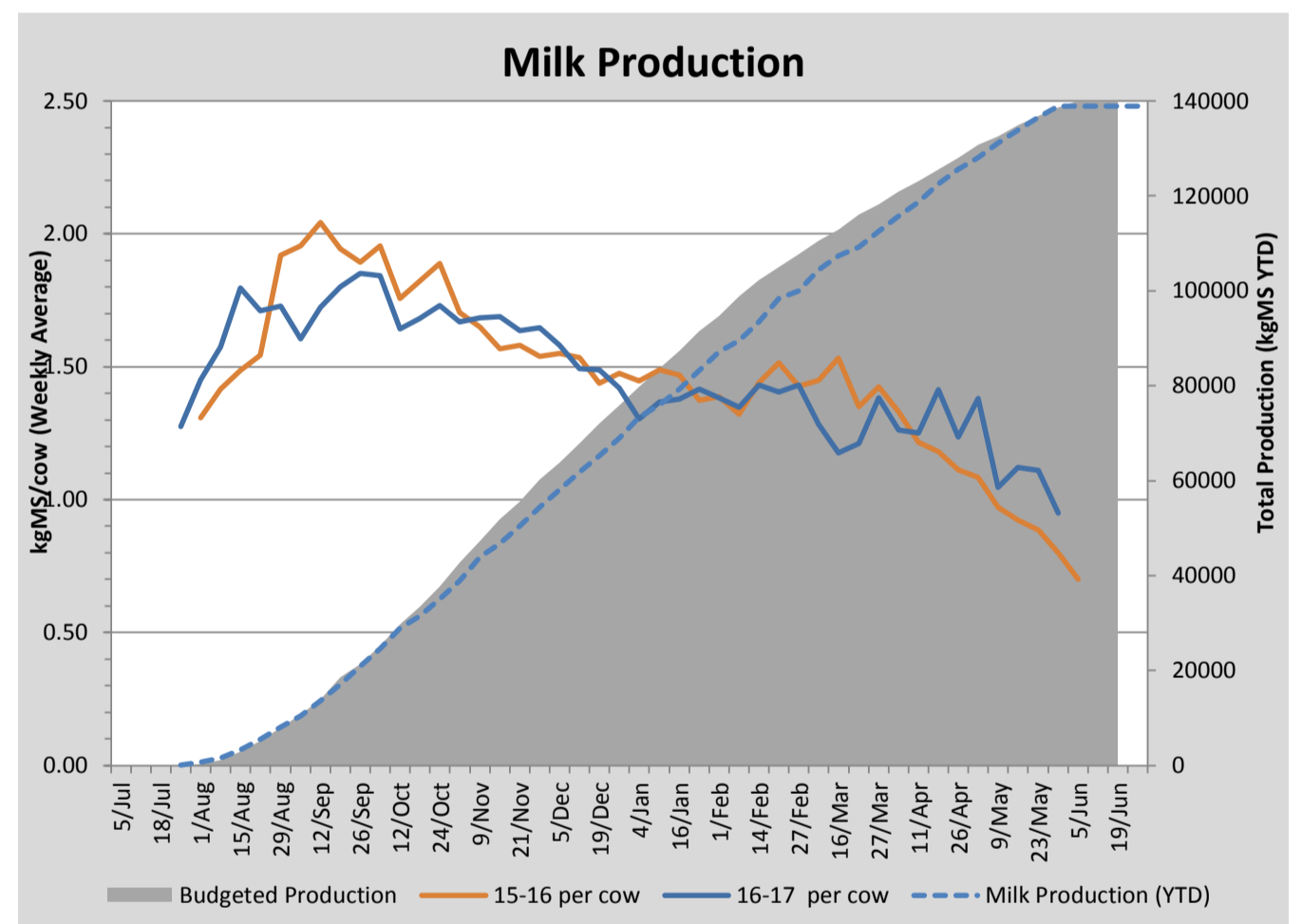
Key Summary Points

- 1 Average pasture cover just held this week with poor growth observed across the milking platform.
- 2 Cows were dried off on the 31st May, 150 cows were sent off farm on agistment. The remaining cows will be transitioned onto winter crop (kale).
- 3 Cull cows remain on the milking platform and will be fattened prior to processing.

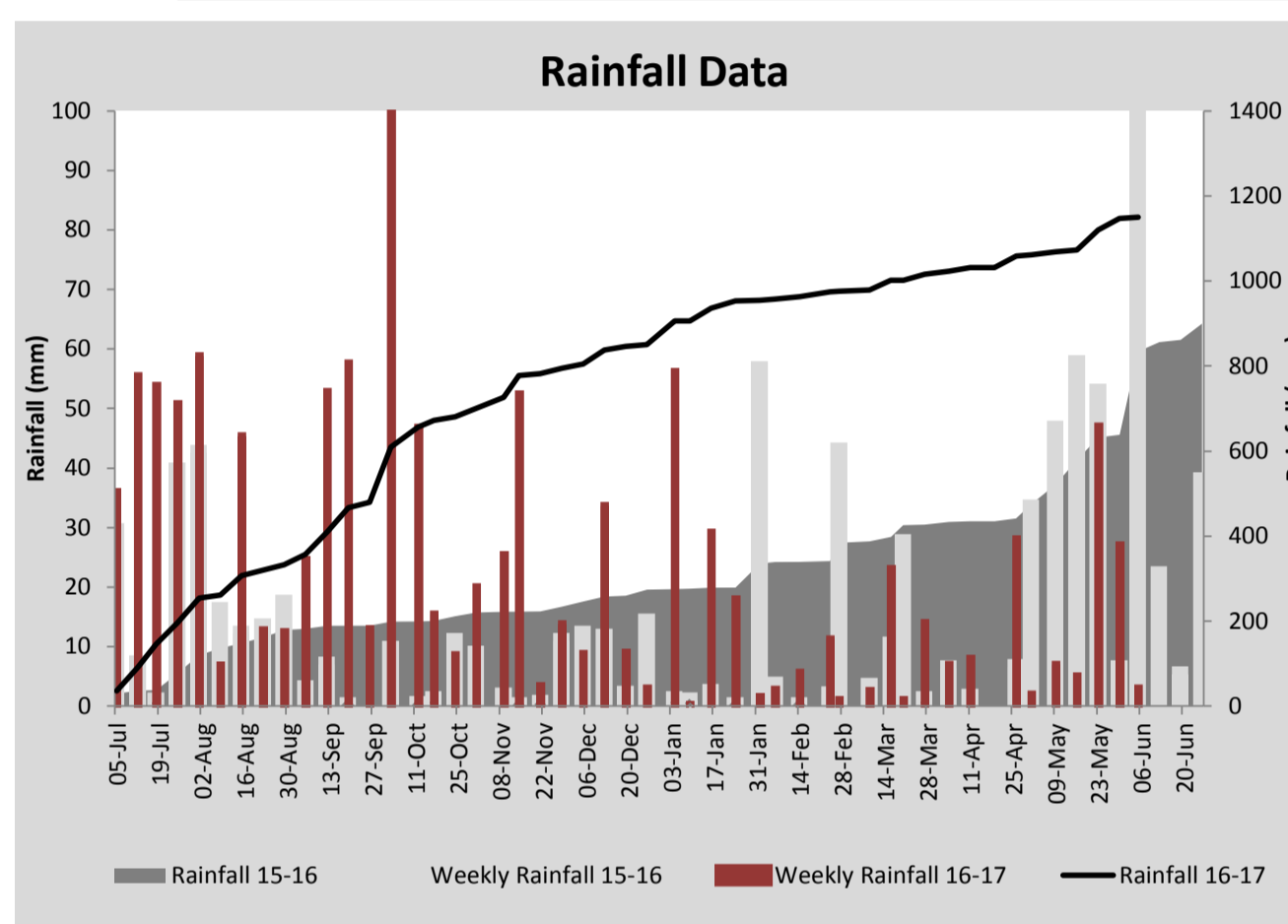
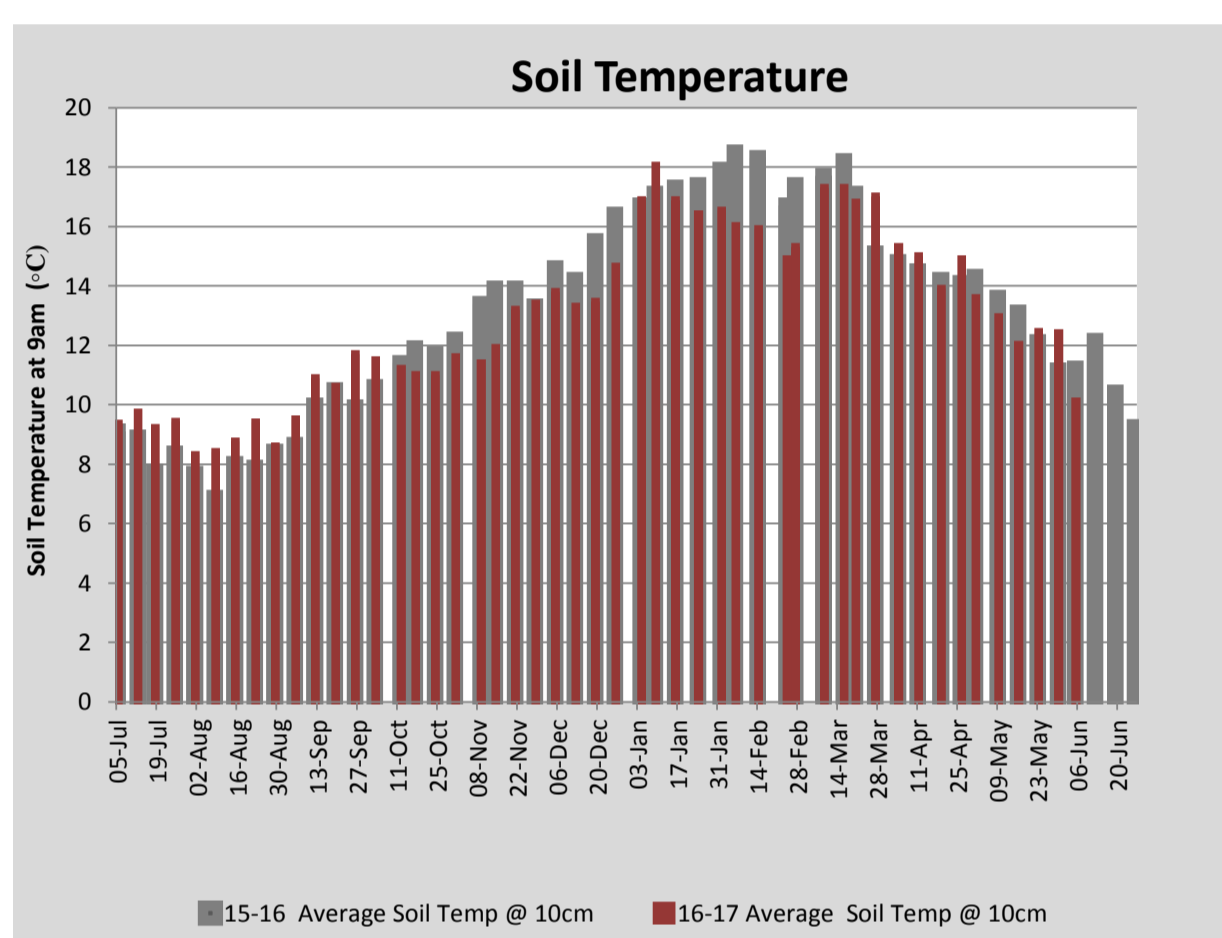
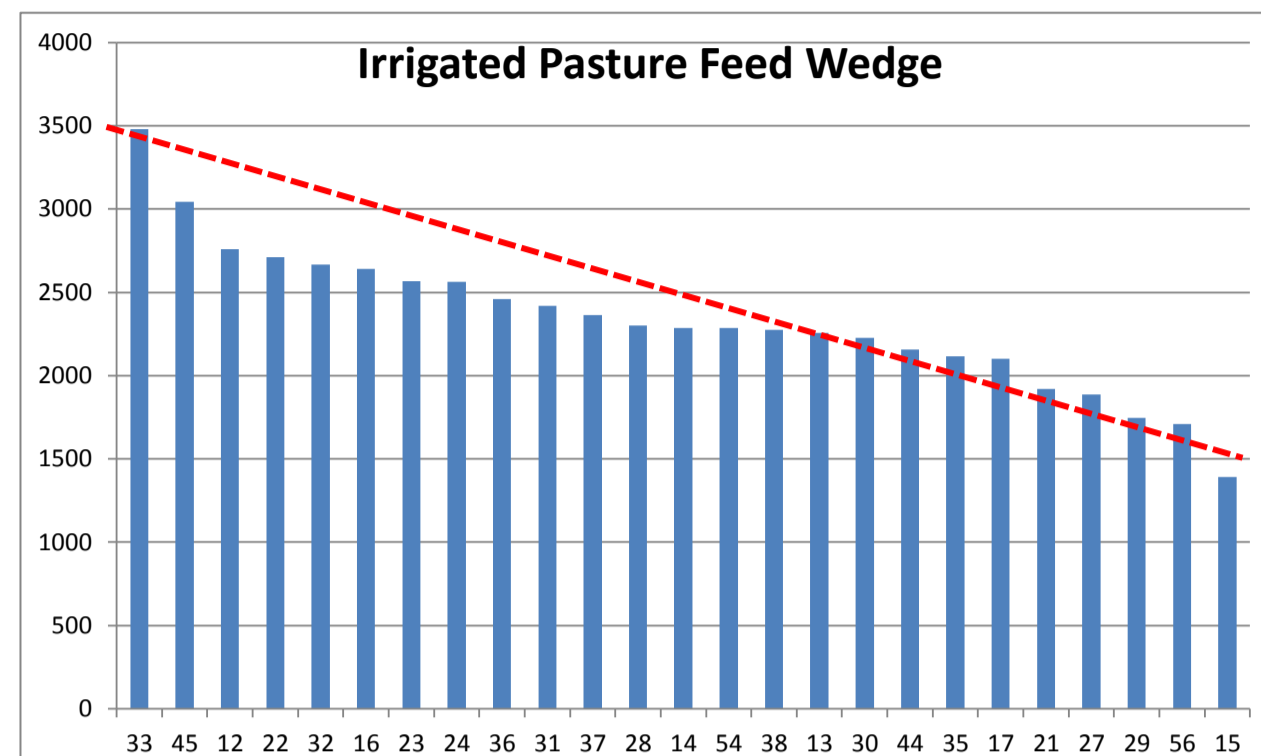
PASTURE INFORMATION	Farm			Irrigated			Rain-fed		
	Last Week	This Week	Variation	Last Week	This Week	Variation	Last Week	This Week	Variation
Grazed milking area (ha)	109.3	109.3	0.0	40.5	47.8	7.3	68.8	61.5	-7
Rotation Length (days)	64	148	83	80	68	-11	56	1537	1481
Grazing allocation per day (ha)	1.7	0.7	-1.0	0.6	0.7	0.1	1.1	0.0	-1.1
Average time since last grazed (days)	56	50	-5	37	38	1	70	60	-10
Leaf appearance rate (days per leaf)	14	14	0	14	14	0	14	14	0
Average Pasture Cover (kgDM/ha)	2100	2122	22	2180	2301	121	2039	1984	-55
Pasture Growth Rate (kgDM/ha/day)	24	19	-5	30	26	-5	19	13	-5
Post Grazing Biomass (kgDM/ha)	1459	1461	2						
Nitrogen applied YTD (kgN/ha)	202	202	0	0	0	0	0	0	0

*Please note all pasture calculations detailed above are based on the current Grazed Milking Area

MILK PRODUCTION	Last Week	This Week	Variation
Average No. cows in milk (vat)	348	0	-348
Litres per cow	9.2	#N/A	#N/A
% Fat	6.01	#N/A	#N/A
% Protein	4.45	#N/A	#N/A
MS/cow/day	0.95	#N/A	#N/A
MS/ha/day	2.92	#N/A	#N/A
BMCC	188,000	273,000	85,000
Average Liveweight (kg)	0	0	0
	Budget	To Date	Variation
Total Milk Production (kgMS)	140,000	138,891	99%
MS/ha YTD	1228	1277	104%



Last 7 days					
Milkers Diet	kg DM	MJ ME	CP (%)	NDF (%)	\$/cow
Pasture Intake	0.0	0.0	0.0	0.0	0.0
Concentrates	0.0	0.0	0.0	0.0	0.0
Silage	0.0	0.0	0.0	0.0	0.0
Grazed forage	0.0	0.0	0.0	0.0	0.0
Other feeds	0.0	0.0	0.0	0.0	0.0
Total	0				0
Target			16-18	>33	0



Analysis			
Expected growth rate next 7 days (kgDM/ha/day)	22	Target Leaf Grazing Stage	2.5-3.0
Total Demand from Pasture (kgDM/ha/day)	14	Predicted APC 7 days time	2177
APC balance (kgDM/ha/day)	8	Predicted APC Change	54.5

Discussion

Average pasture cover just held this week with poor growth observed across the milking platform. We have seen a significant drop on soil temperature over the last week (currently 10.1°C) and this was reflected in the pasture growth rates. All cows were dried off last week and are to be transitioned onto kale winter crop this coming week. Cull cows (40) have been retained and will be fattened on the milking platform.

5 June 2017

