

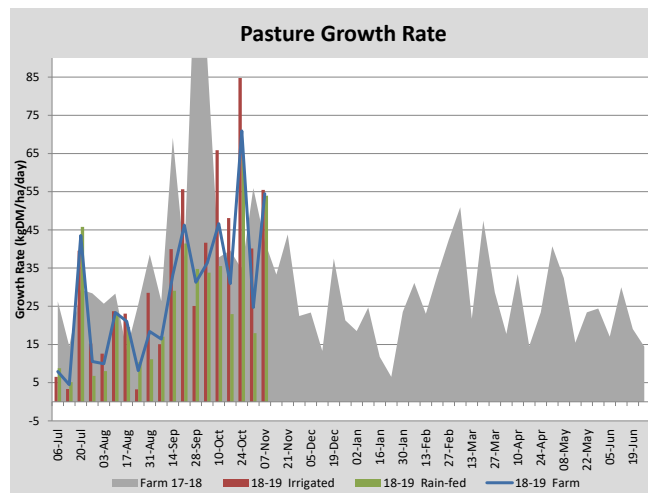
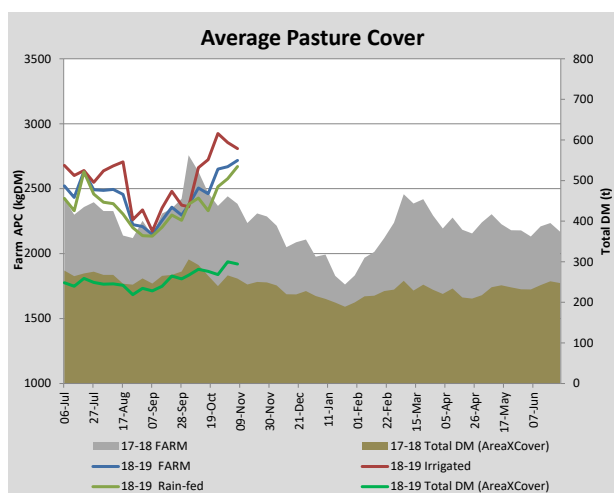
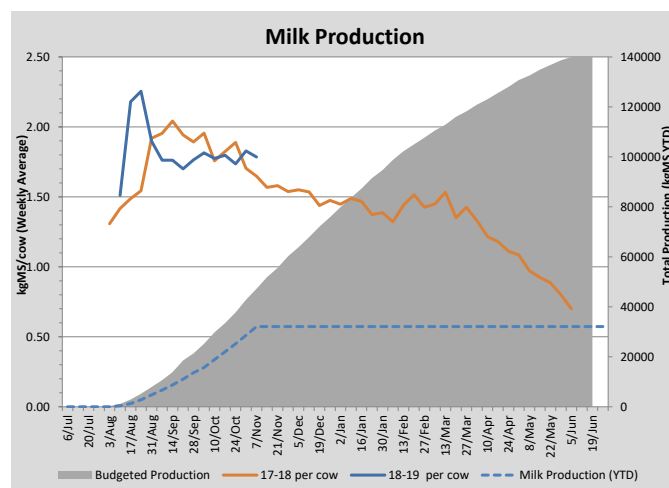
## Key Summary Points

- 1 Leaf appearance rate has quickened on irrigated pasture.
- 2 Milk fat percentage has started to improve.
- 3 First group of calves have been weaned.

PASTURE INFORMATION	Farm			Irrigated			Rain-fed		
	Last Week	This Week	Variation	Last Week	This Week	Variation	Last Week	This Week	Variation
Grazed milking area (ha)	112.3	112.3	0.0	37.2	37.2	0.0	75.2	75.2	0.0
Leaf appearance rate (days per leaf)	13	11	-2	11	7	-4	14	13	-1
Average Pasture Cover (kgDM/ha)	2505	2460	-45	2662	2723	61	2428	2330	-97
Pasture Growth Rate (kgDM/ha/day)	47	31	-16	66	48	-18	36	23	-13
Post Grazing Biomass (kgDM/ha)	1700	1577	-123						
Nitrogen applied YTD (kgN/ha)	28	38	10	5	8	3	0	11	11

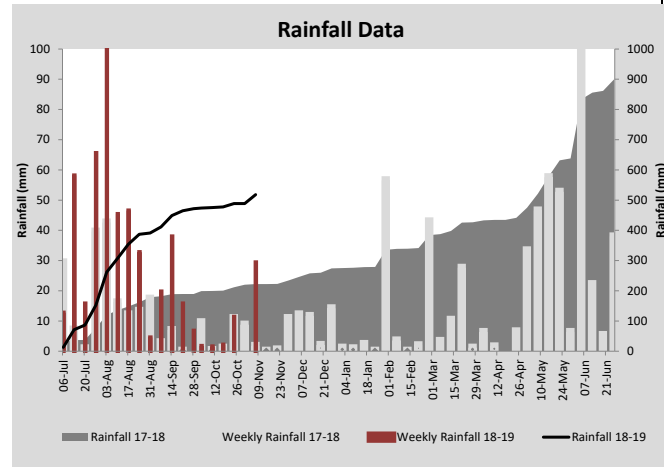
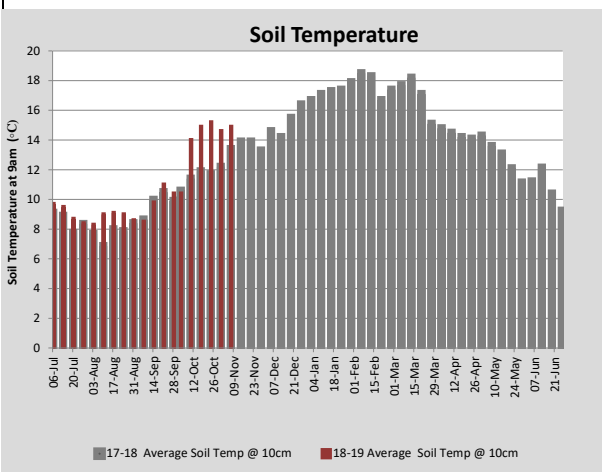
\*Please note all pasture calculations detailed above are based on the current Grazed Milking Area

MILK PRODUCTION	Last Week	This Week	Variation
Average No. cows in milk (vat)	309	306	-3
Litres per cow	25.4	25.1	-0.3
% Fat	3.71	3.91	0.20
% Protein	3.26	3.13	-0.13
MS/cow/day	1.78	1.80	0.02
MS/ha/day	4.85	4.87	0.01
BMCC	204	173	-31
Average Liveweight (kg)	0	0	0
	Budget	To Date	Variation
Total Milk Production (kgMS)	33,479	22,018	-66%
MS/ha YTD	294		



**Last 7 days**

Milkers Diet	kg DM	MJ ME	CP (%)	NDF (%)	\$/cow
Pasture Intake	15.0	11.8	23.4	46.2	0.0
Concentrates	4.0	12.5	14.0	20.0	0.0
Silage	0.0	0.0	0.0	0.0	0.0
Grazed forage	0.0	0.0	0.0	0.0	0.0
Other feeds	0.0	0.0	0.0	0.0	0.0
<b>Total</b>	<b>19</b>	<b>227</b>	<b>21.4</b>	<b>40.7</b>	<b>0</b>
<b>Target</b>		<b>210</b>	<b>16-18</b>	<b>&gt;33</b>	<b>0</b>



Analysis			
Expected growth rate next 7 days (kgDM/ha/day)	45	Target Leaf Grazing Stage	2.5-3.0
Total Demand from Pasture (kgDM/ha/day)	54	Predicted APC 7 days time	2394
APC balance (kgDM/ha/day)	-9	Predicted APC Change	-66.2

## Discussion

NOTE: FROM THIS REPORT FORWARD THE C-DAX PASTURE METER READINGS HAVE BEEN ADJUSTED TO BETTER MATCH PLATE METER CALIBRATIONS. THE READINGS ARE NOW LOWER WHICH IS WHY THERE IS DECREASED PATURE GROWTH AND COVER. With temperature increasing, the leaf appearance rate has quickened on the irrigated pasture. The first signs of reproductive nodes on pasture has also been noticed. This signals the time to start decreasing the rotation length from grazing at the 3-leaf stage towards grazing at the 2-leaf stage in order to maintain quality of feed. To achieve this, paddocks will be dropped from the rotation for silage. We have also started to see an improvement in the milk fat percentage - not due to any changes in management, most likely due to the seasonal change in the pasture. The first group of 30 calves have been weaned from milk - pellet feeding will continue while they adapt to the change in diet. Mating of the milking herd will begin on October 23.

# 17 October 2018

