

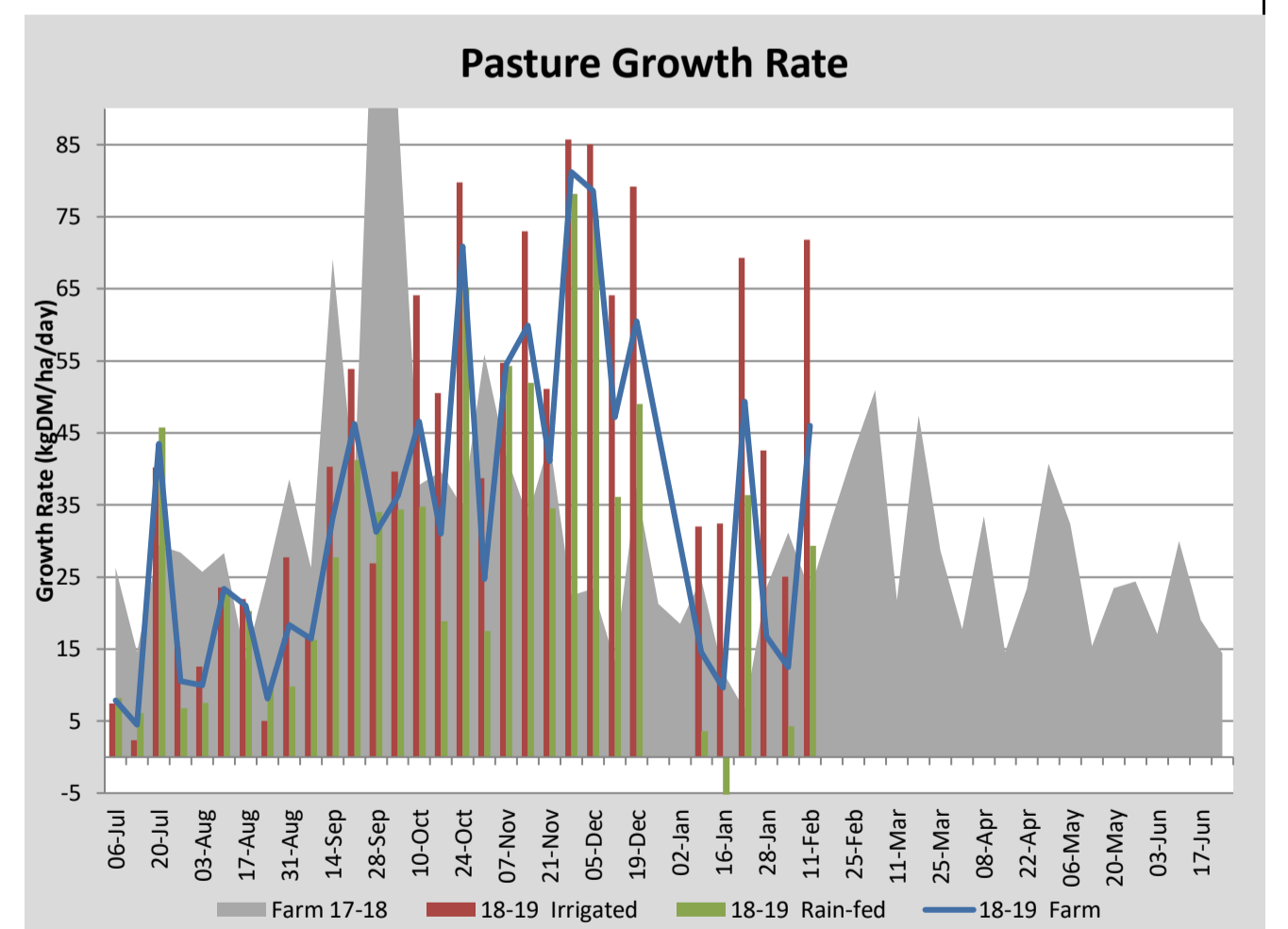
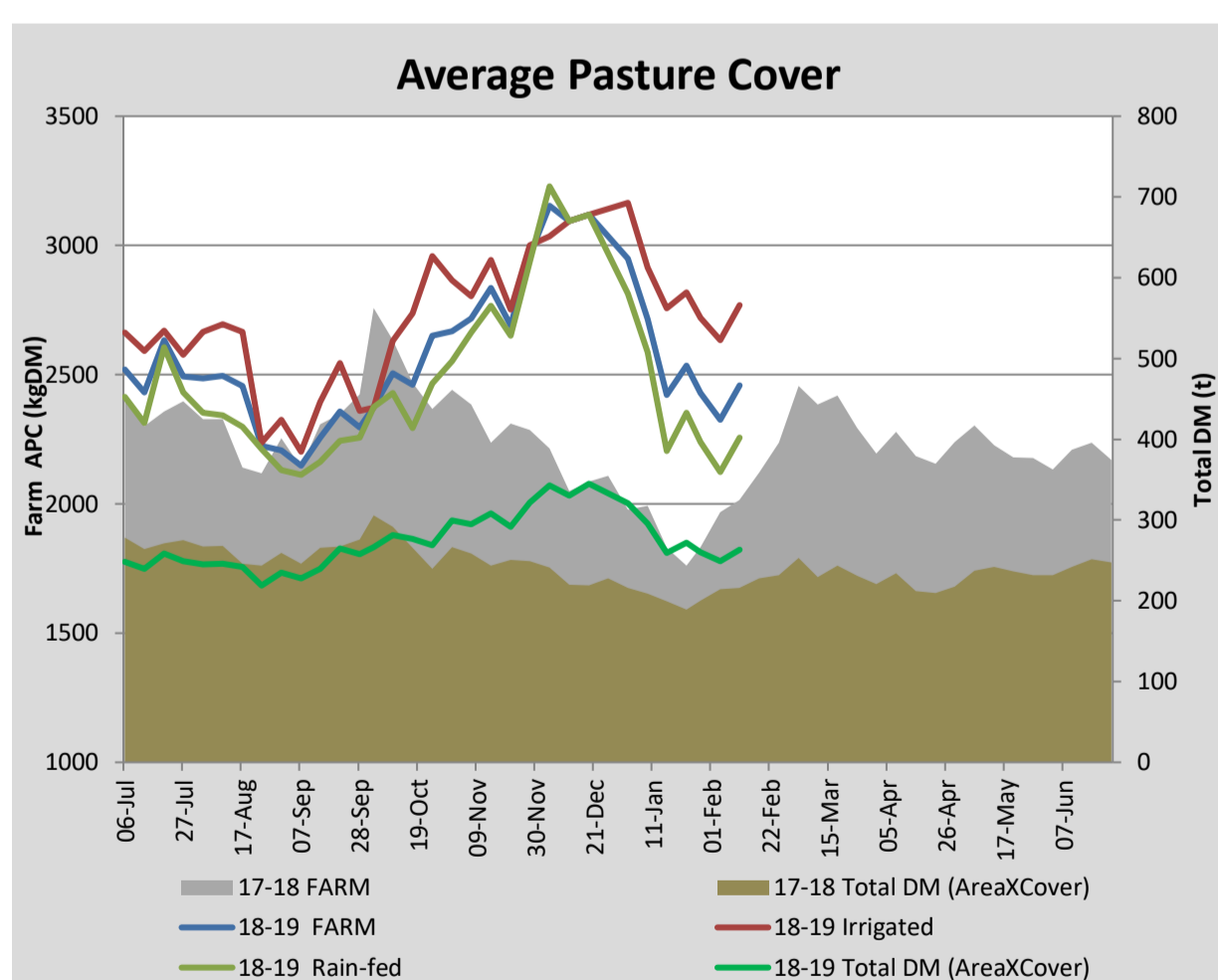
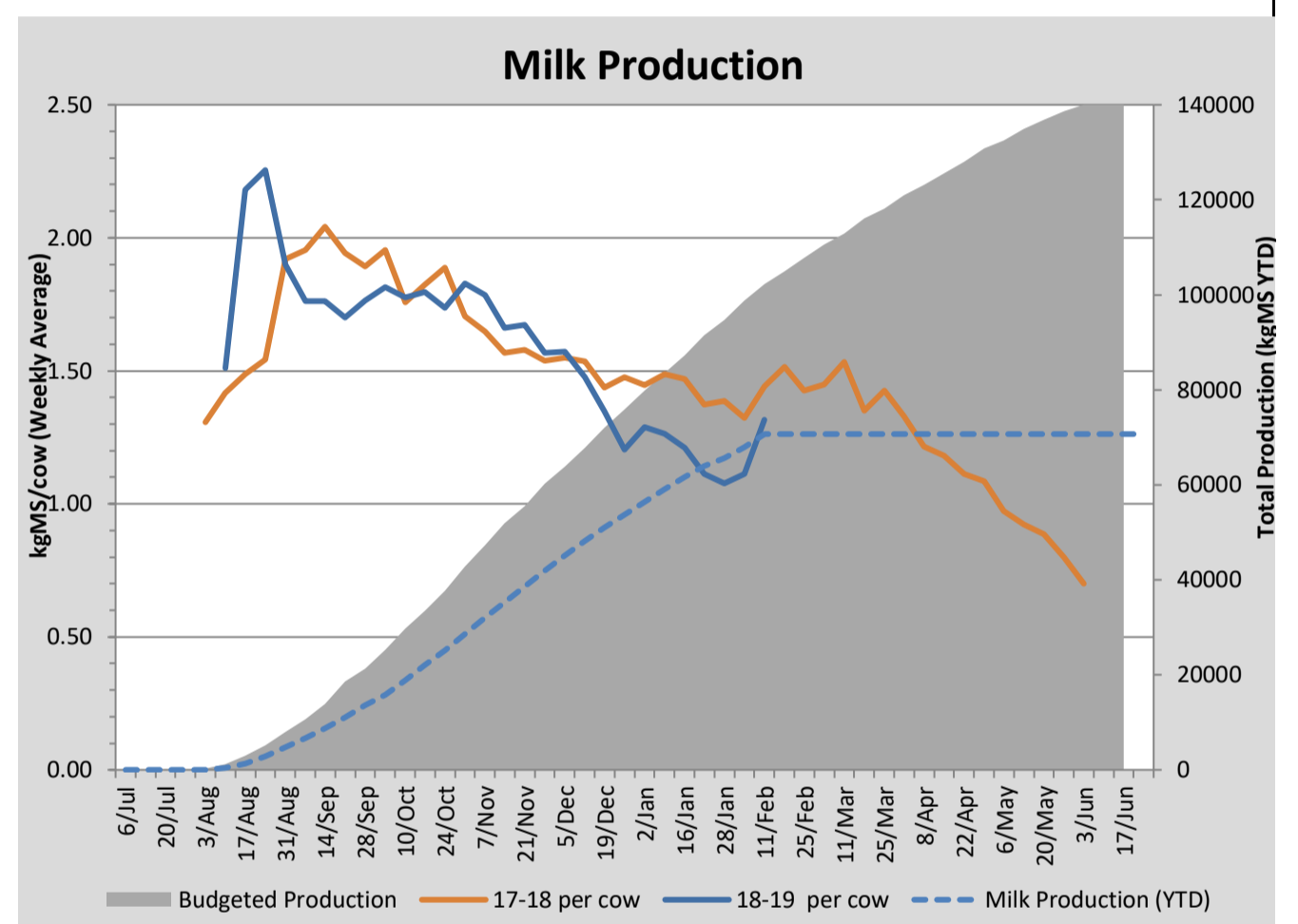
Key Summary Points

- 1 Milk production has started to increase.
- 2 Young stock have been weighed and are on target.
- 3 Irrigation was able to be turned-off with the rainfall.

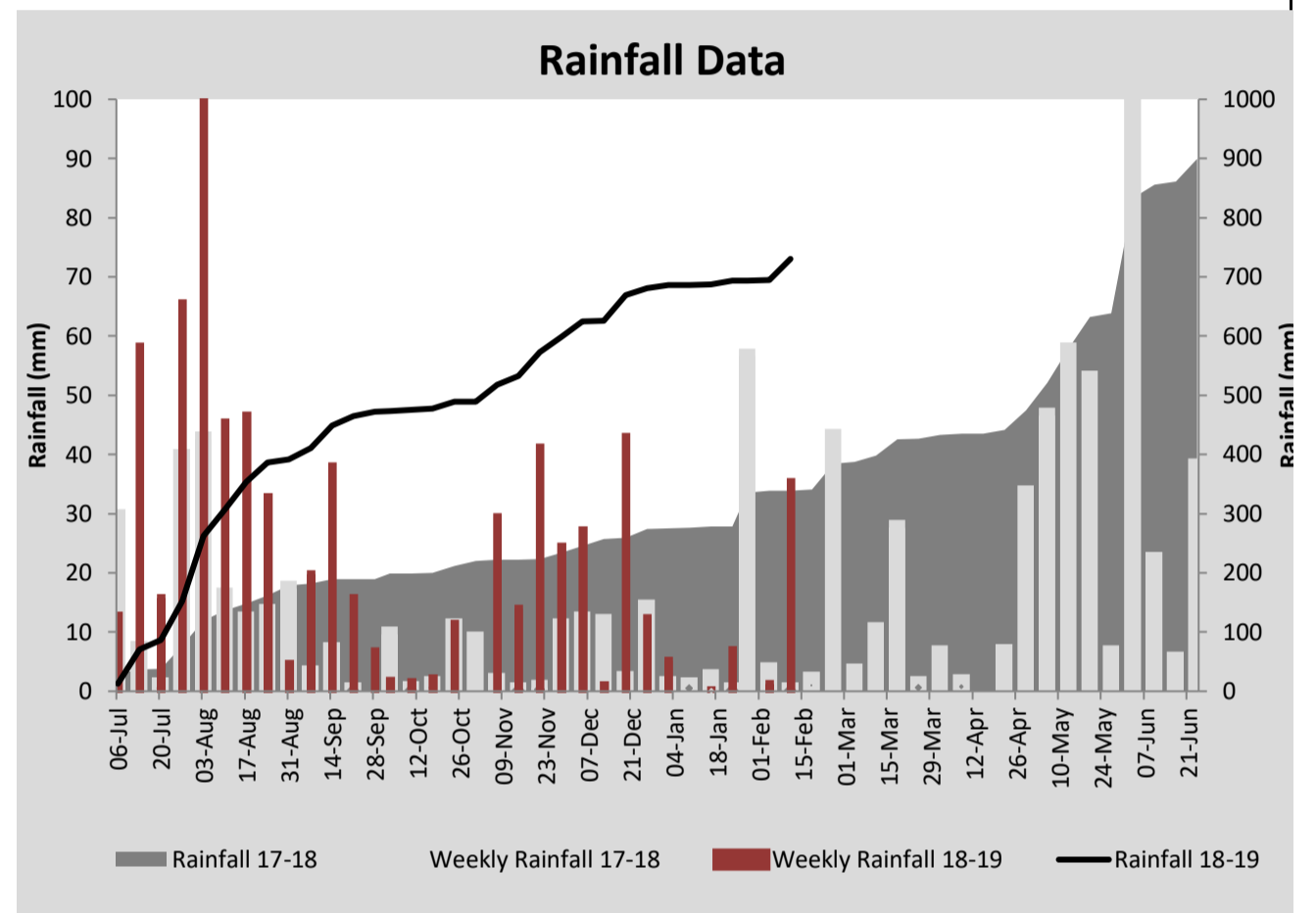
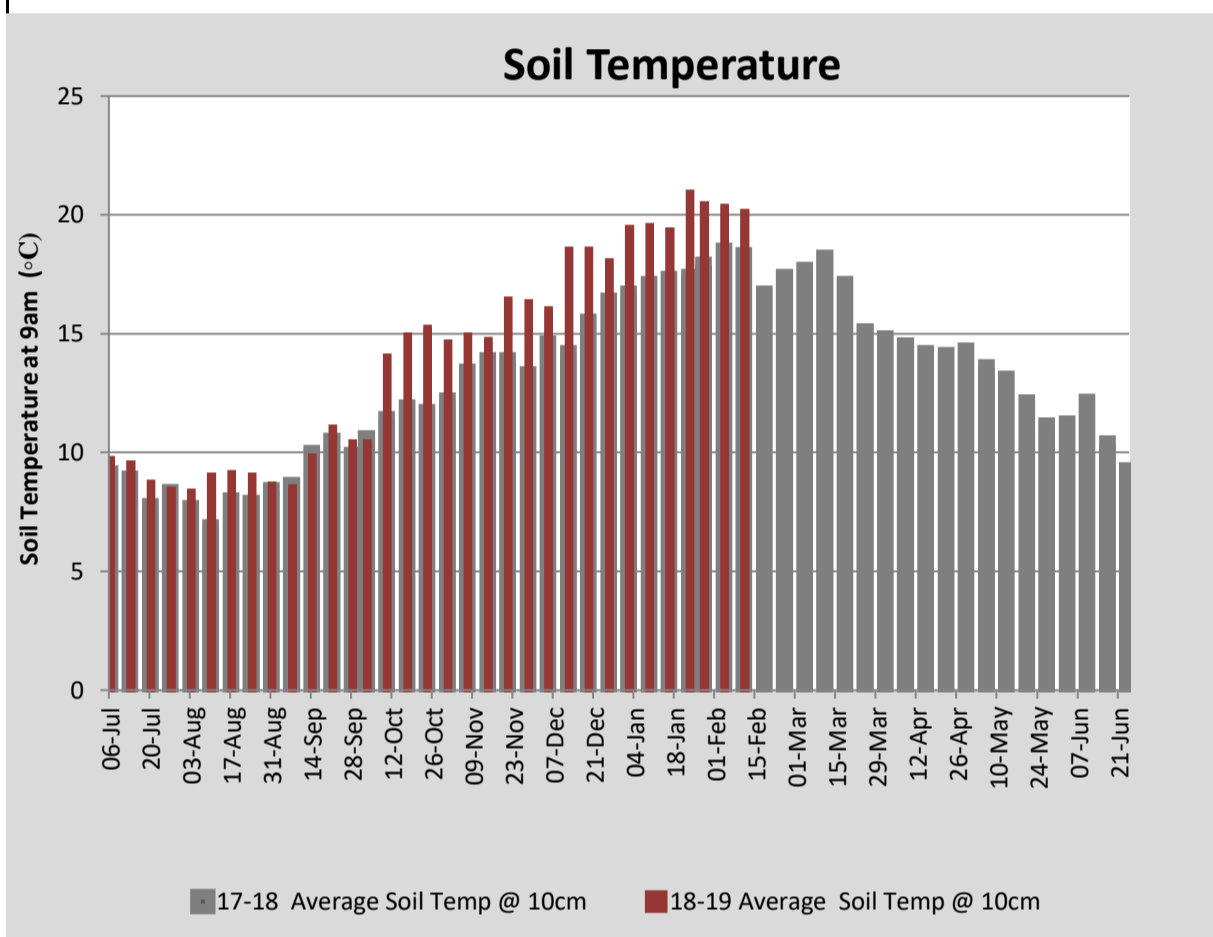
PASTURE INFORMATION	Farm			Irrigated			Rain-fed		
	Last Week	This Week	Variation	Last Week	This Week	Variation	Last Week	This Week	Variation
Grazed milking area (ha)	107.1	107.1	0.0	42.2	42.2	0.0	64.9	64.9	0.0
Leaf appearance rate (days per leaf)	15	16	0	8	9	1	20	20	0
Average Pasture Cover (kgDM/ha)	2428	2324	-104	2719	2633	-86	2239	2124	-115
Pasture Growth Rate (kgDM/ha/day)	17	12	-4	43	25	-17	0	4	4
Post Grazing Biomass (kgDM/ha)	1647	1526	-121						
Nitrogen applied YTD (kgN/ha)	71	75	3	5	8	3	3	0	-3

*Please note all pasture calculations detailed above are based on the current Grazed Milking Area

MILK PRODUCTION	Last Week	This Week	Variation
Average No. cows in milk (vat)	299	300	1
Litres per cow	14.1	14.3	0.2
% Fat	4.43	4.46	0.03
% Protein	3.25	3.33	0.08
MS/cow/day	1.08	1.11	0.04
MS/ha/day	2.85	2.95	0.10
BMCC	166	154	-12
	Budget	To Date	
Total Milk Production (kgMS)	98,820	67,904	
MS/ha YTD	867		



Last 7 days					
Milkers Diet	kg DM	MJ ME	CP (%)	NDF (%)	\$/cow
Pasture Intake	9.4	11.6	20.3	49.4	0.0
Concentrates	3.5	12.5	14.0	20.0	0.0
Silage	3.6	10.1	13.8	41.0	0.0
Grazed forage	1.5	12.0	15.0	27.0	0.0
Other feeds	0.0	0.0	0.0	0.0	0.0
Total	18	207.2	17.3	40.1	0
Target	210	16-18	>33	0	



Analysis			
Expected growth rate next 7 days (kgDM/ha/day)	11	Target Leaf Grazing Stage	2.5-3.0
Total Demand from Pasture (kgDM/ha/day)	33	Predicted APC 7 days time	2169
APC balance (kgDM/ha/day)	-22	Predicted APC Change	-155.3

Discussion

The recent rainfall has meant the irrigation can be turned-off for a few days. Young stock were weighed. The rising 2-yo heifers averaged 413 kg which is above target weight. Their condition is very good. The rising 1-yo heifers averaged 149 kg which is 2 kg below target weight. Barley grain and canola meal has been purchased to supplement the young stock. The rising 1-yo are being fed 1 kg/calf/day and the rising 2-yo are receiving 2 kg/heifer/day.

4 February 2019

