

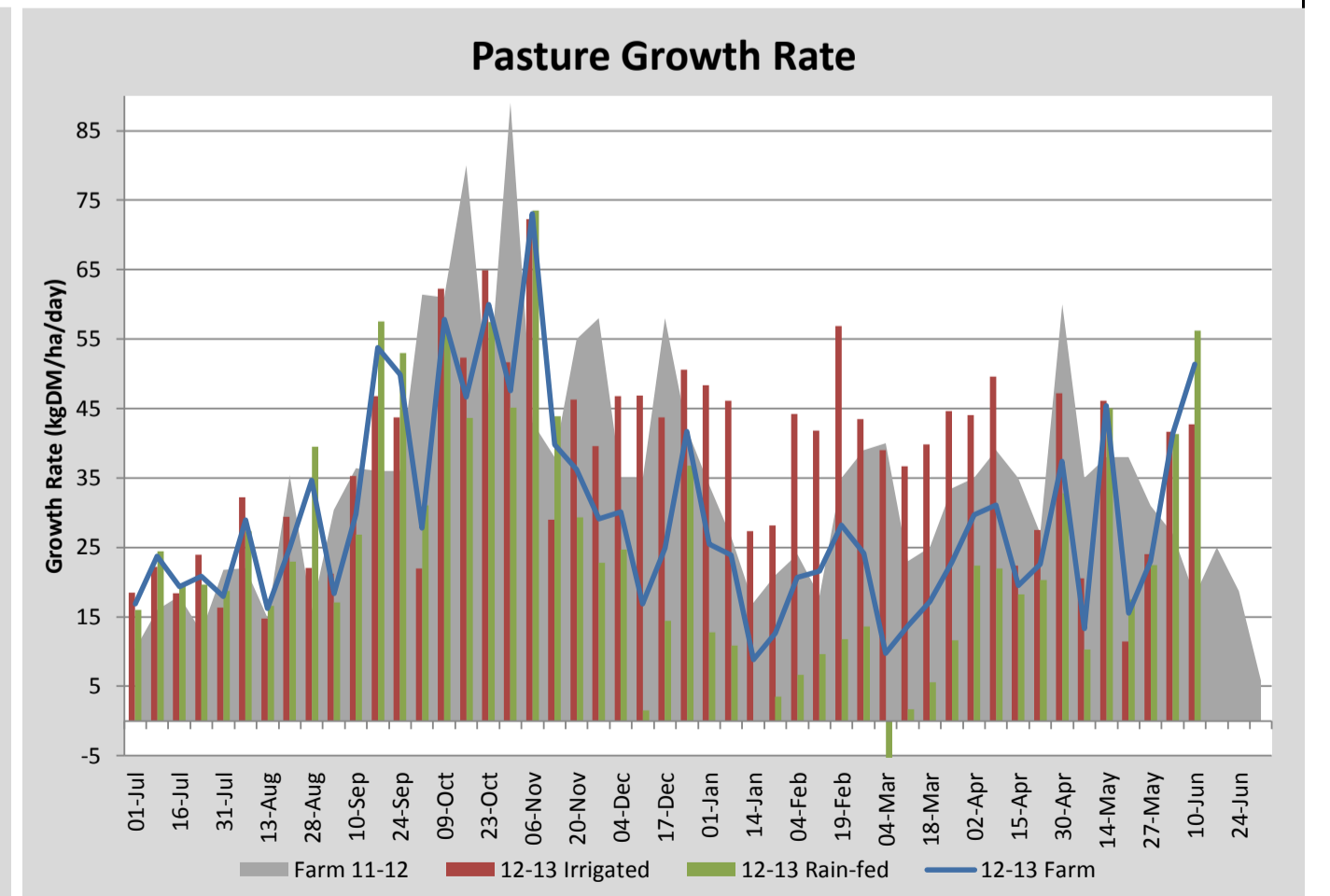
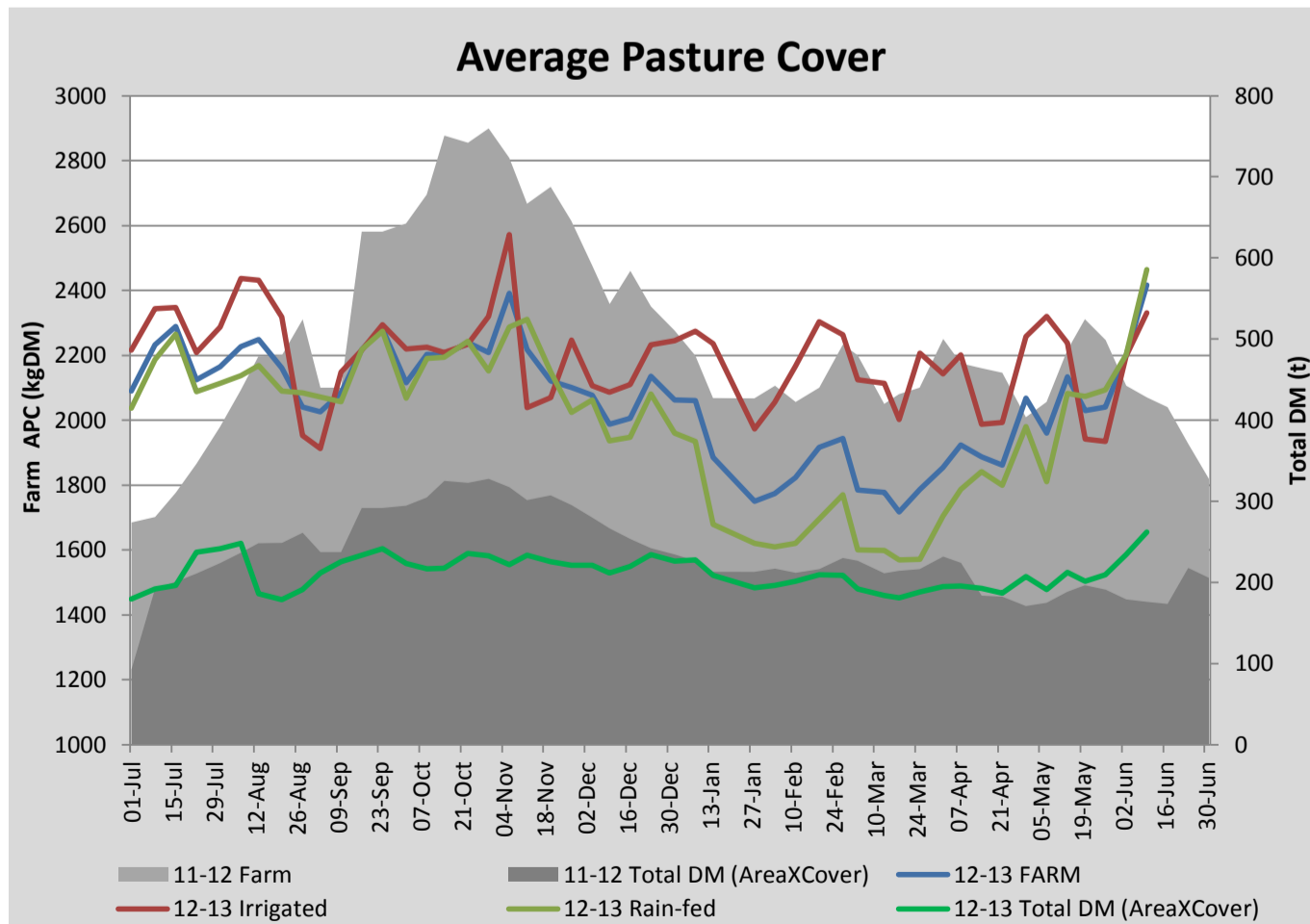
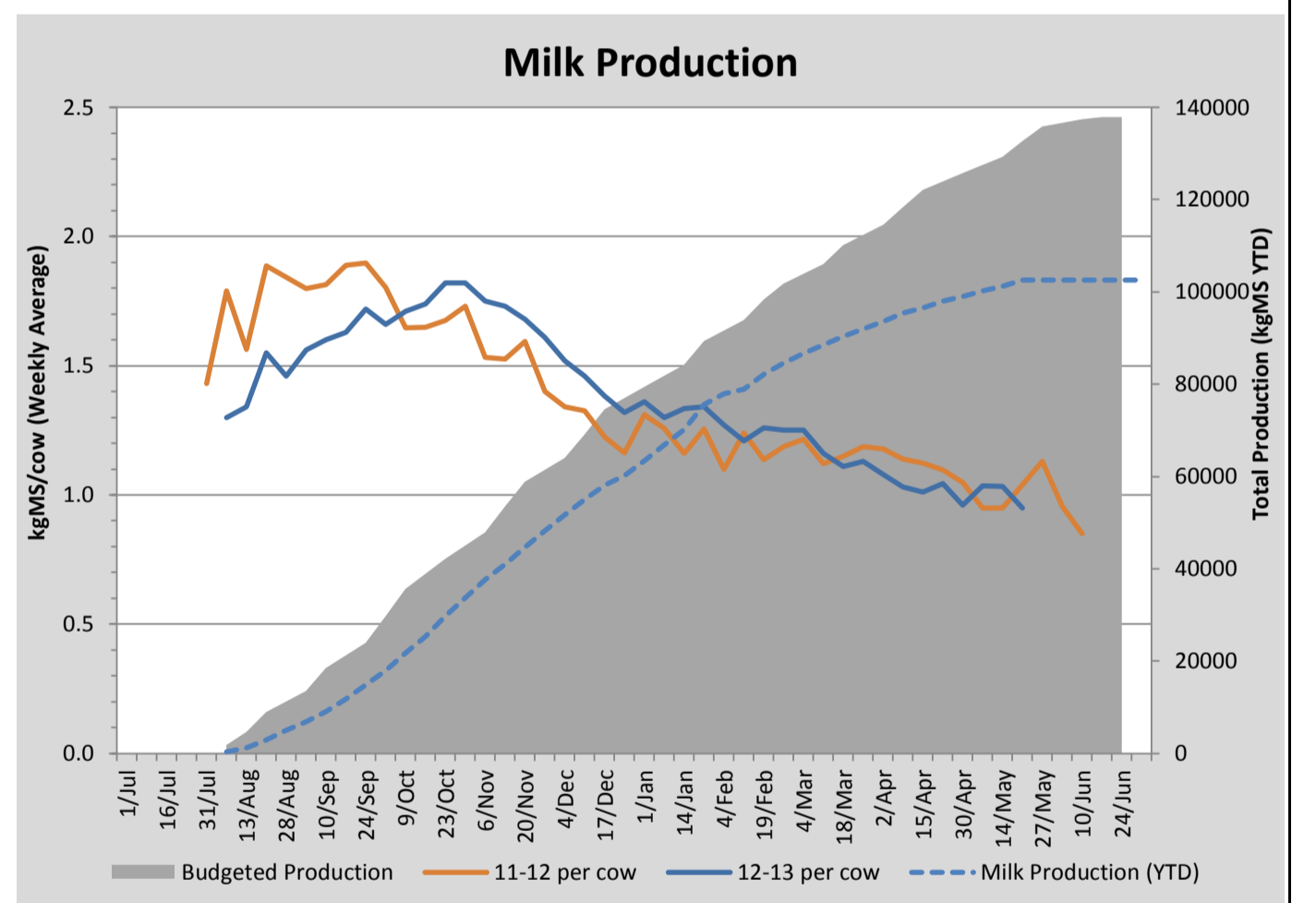
## Key Summary Points

- 1 Average pasture cover has continued to build this week to 2417kgDM/ha
- 2 Dry cow kale allocation has been increased to 4kgDM/cow/day with straw and pasture being reduced to 2kgDM/cow/day each (total allocation 8kgDM/cow/day)
- 3 Additional work being completed on farm at the moment includes a storm water diversion for the dairy yard and stock water system upgrades

PASTURE INFORMATION	Farm			Irrigated			Rain-fed		
	Last Week	This Week	Variation	Last Week	This Week	Variation	Last Week	This Week	Variation
Grazed milking area (ha)	106.4	108.4	1.9	37.0	38.9	1.94	69.5	69.5	0.00
Rotation Length (days)	108	114		176	0		89	73	
Grazing allocation per day (ha)	1.0	1.0	0.04	0.2	0.0	0.21	0.8	1.0	0.17
Average time since last grazed (days)	43	46	2	50	60	-10	40	38	-2
Leaf appearance rate (days per leaf)	15	15	0	15	15	0	15	15	0
Average Pasture Cover (kgDM/ha)	2199	2417	218	2197	2331	134	2200	2465	265
Pasture Growth Rate (kgDM/ha/day)	41	51	10	42	43	1	41	56	15
Post Grazing Biomass (kgDM/ha)	1400	1550	150						
Nitrogen applied YTD (kgN/ha)	254	254	0	0	0	0	0	0	0

\*Please note all pasture calculations detailed above are based on the current Grazed Milking Area

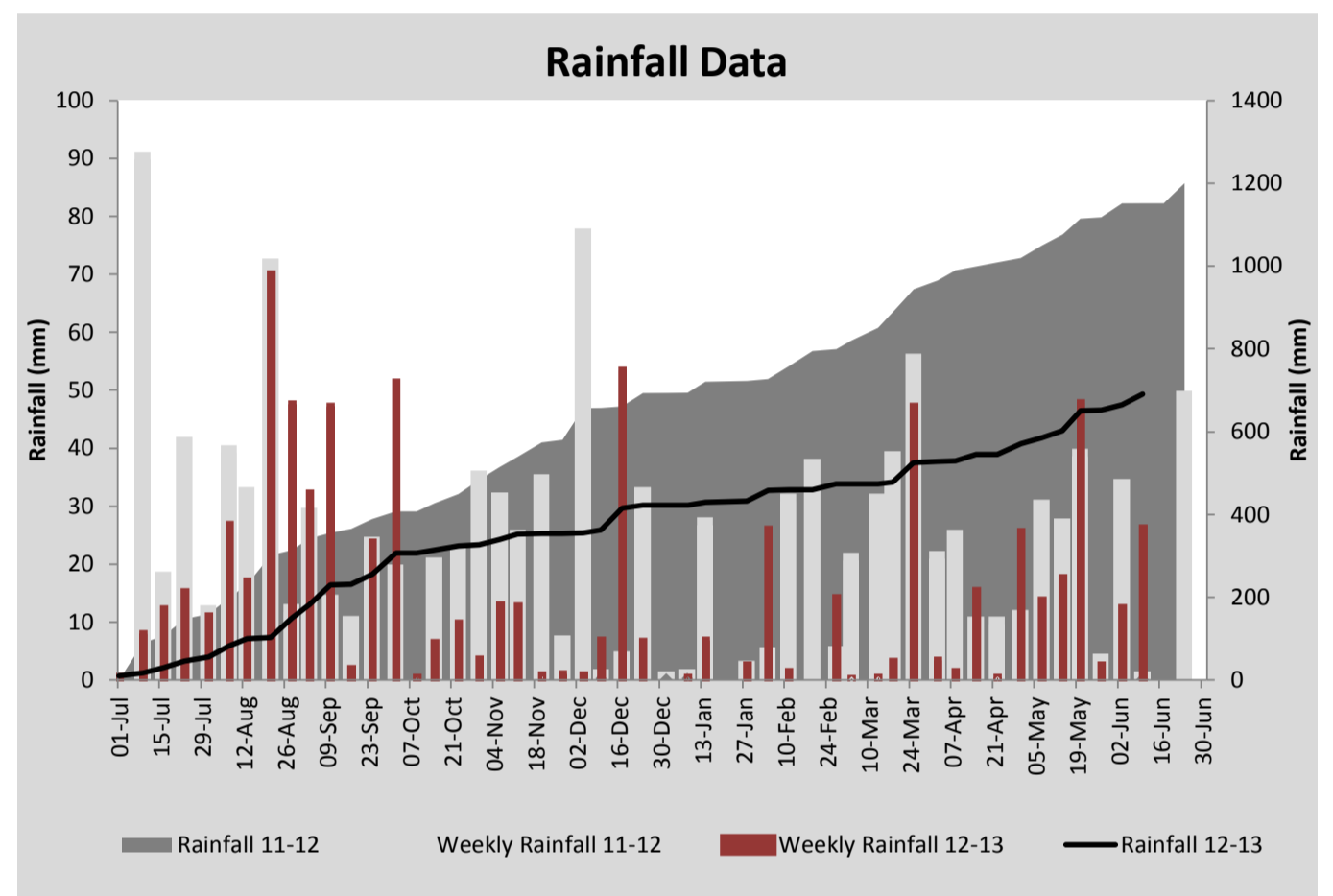
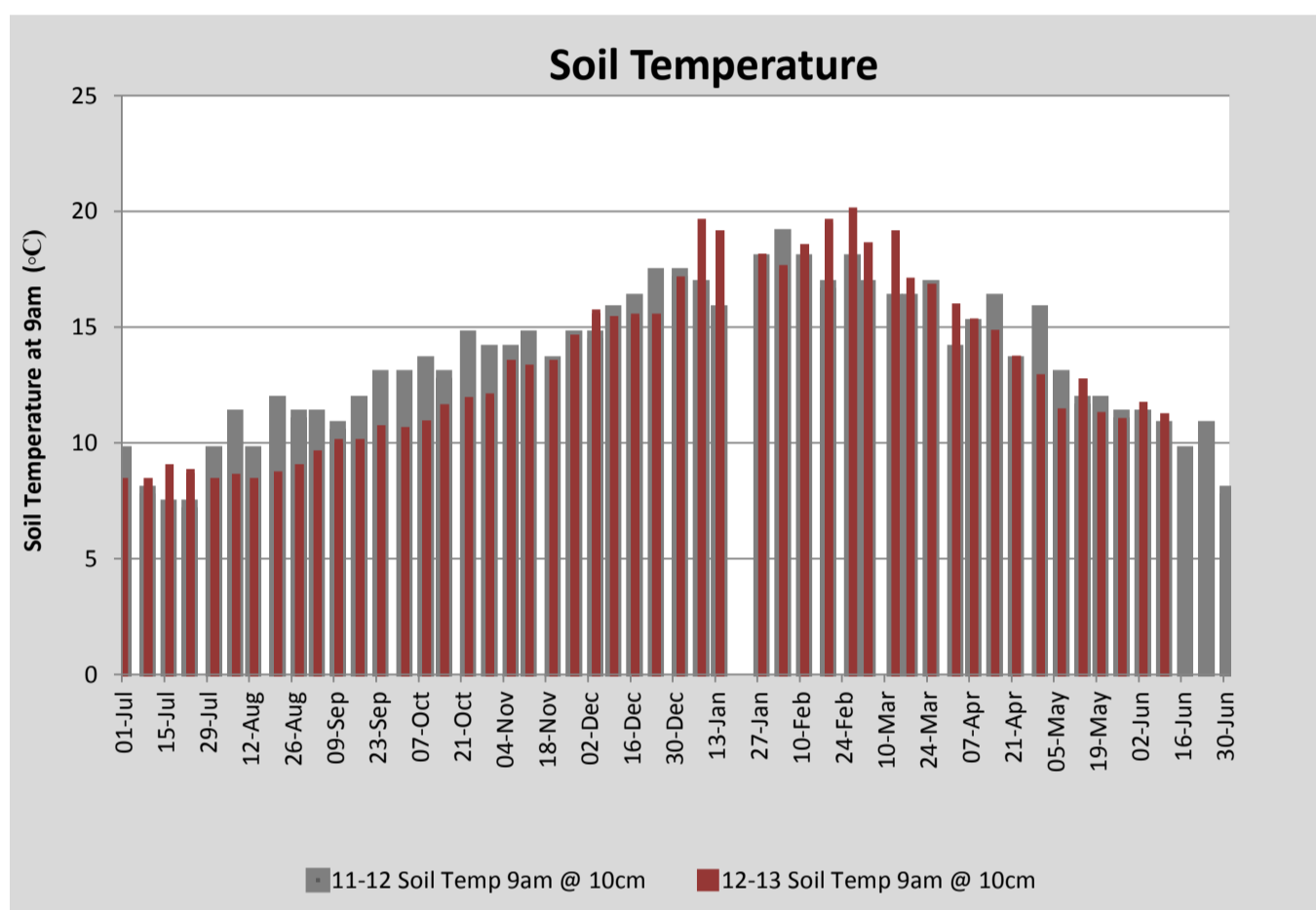
MILK PRODUCTION	Last Week	This Week	Variation
No cows in milk (vat)	0	0	0.00
Litres per cow	#N/A	#N/A	#N/A
% Fat	#N/A	#N/A	#N/A
% Protein	#N/A	#N/A	#N/A
MS/cow/day	#N/A	#N/A	#N/A
MS/ha/day	#N/A	#N/A	#N/A
BMCC	#N/A	#N/A	#N/A
Average Liveweight (kg)			
	Budget	To Date	Variation
Total Milk Production (kgMS)	137409	102526	75%
MS/ha YTD	1227	#N/A	#N/A



Last 7 days					
Milkers Diet	kg DM	ME	CP	NDF	\$/cow
Pasture Intake	0.0	0.0	0.0	0.0	0.0
Concentrates	0.0	0.0	0.0	0.0	0.0
Silage	0.0	0.0	0.0	0.0	0.0
Grazed forage	0.0	0.0	0.0	0.0	0.0
Other feeds	0.0	0.0	0.0	0.0	0.0
<b>Total</b>	<b>0</b>	<b>0</b>	<b>0</b>	<b>0</b>	<b>0</b>
<b>Target</b>	<b>0</b>		<b>0</b>	<b>0</b>	<b>0</b>



Dry cows grazing kale crop. Estimated yield of 7000kgDM/ha



Analysis			
Expected growth rate next 7 days (kgDM/ha/day)	30	Target Leaf Grazing Stage	3.0
Total Demand from Pasture (kgDM/ha/day)	14	Predicted APC 7 days time	2530
APC balance (kgDM/ha/day)	16	Predicted APC Change	112.9

## Discussion

Average pasture cover has continued to build this week to 2417kgDM/ha. Some paddock covers may have been slightly over estimated due to wet conditions and spatter on the pasture meter sensors however, on the whole, the data is a good representation of the present situation. The increase in APC has been aided by strong growth from new pasture and relatively mild temperatures. Kale allocation has been increased this week to 4kgDM/cow/day with pasture and straw allocation being reduced to 2kgDM/cow/day (Total diet 8kgDM/cow/day). We currently have 10ha of kale remaining which equates to about 60 days grazing at the current daily allocation. The 'skinny' dry cow and R2 heifers are responding well to additional (grain) feeding, gaining on average 2.2kgLWT/head/day. This average daily gain seems high however during the third trimester we can expect the foetus, placenta and foetal fluids to be gaining approximately 0.9kg/day which leaves 1.3kgLWT gain per day for the cow/heifer which seems feasible. Broad leaf weeds in autumn pasture sowings have been sprayed and we are monitoring pastures for corbie grub activity. If more than two corbie grubs per spade full (20cm depth) are found across a paddock, it will be sprayed.

# 10 June 2013

