

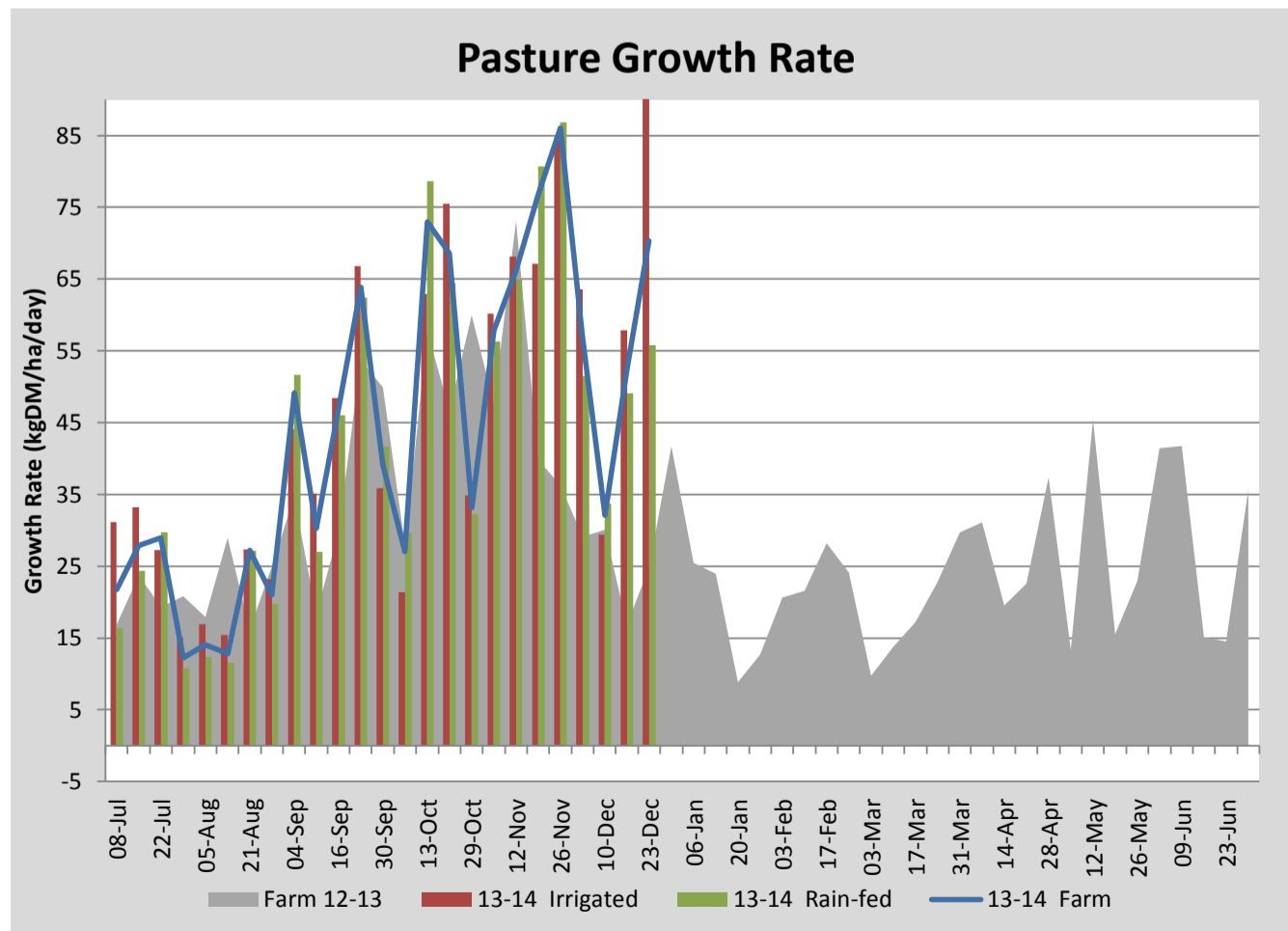
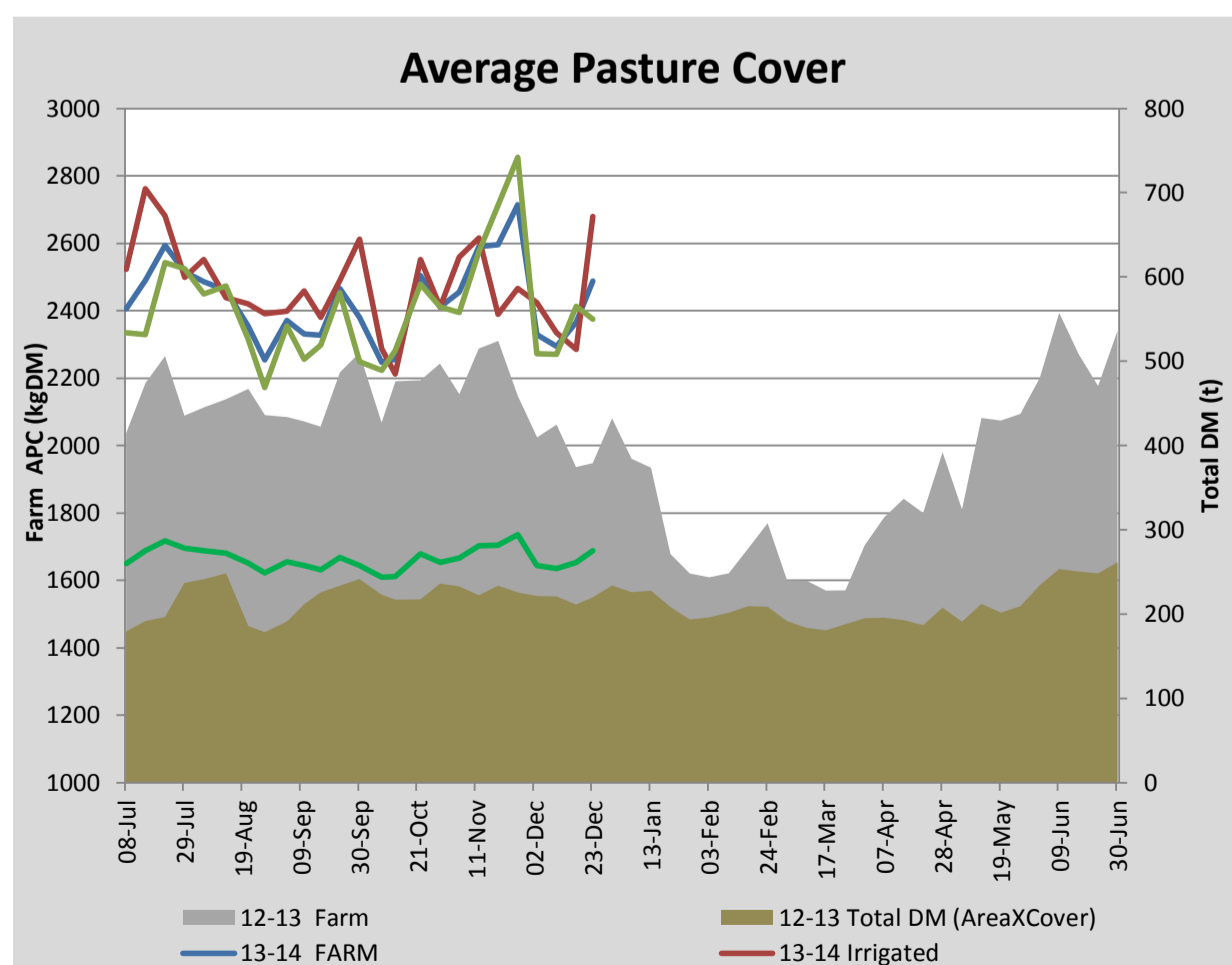
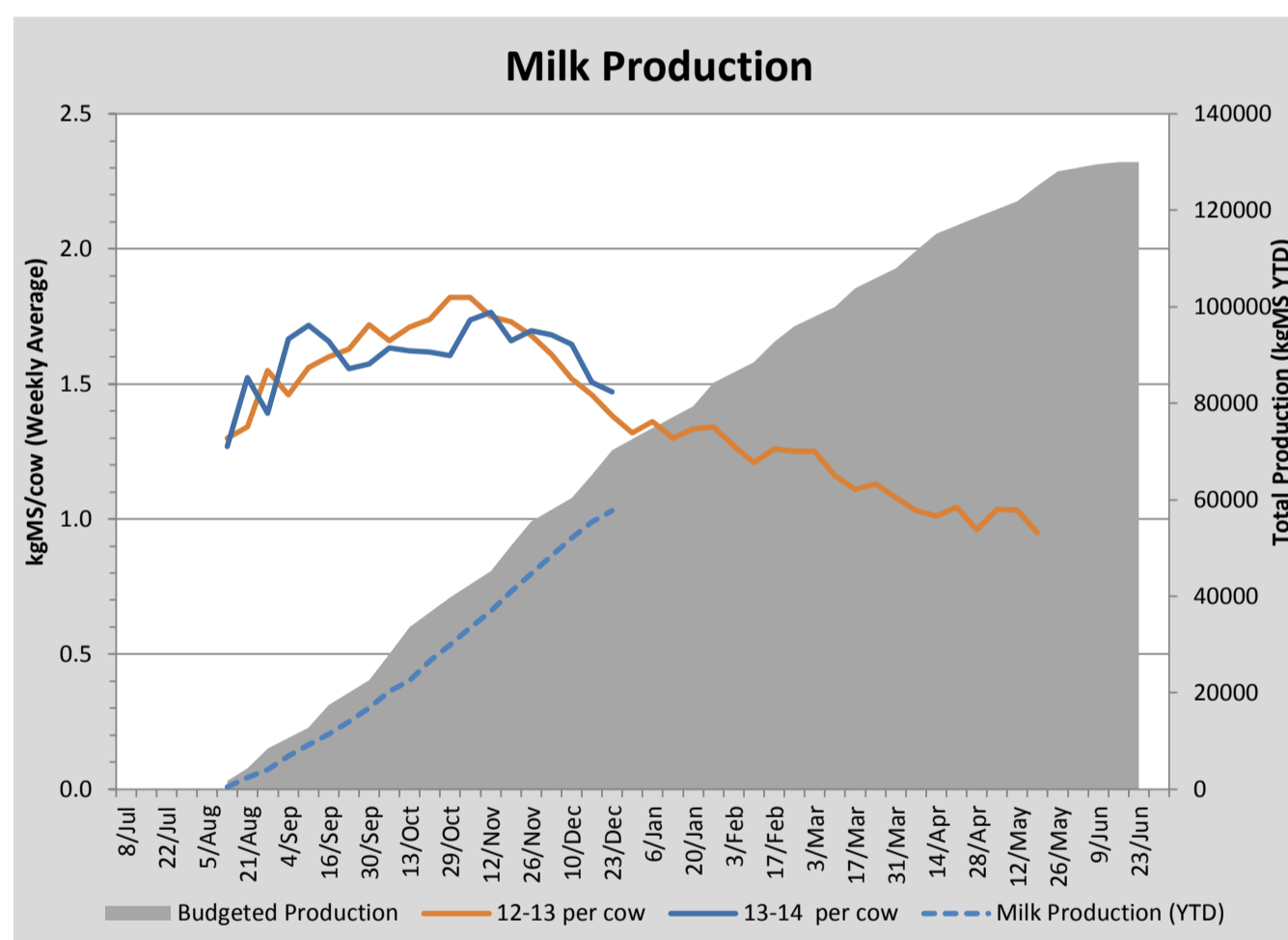
Key Summary Points

- 1 Average pasture cover has increased this week to just under 2500kgDM/ha
- 2 Pasture growth rates have increased (particularly on the irrigated ground) with increasing soil temperature (15°C)
- 3 Priority for the coming week is to manage reproductive pasture growth via pre-graze topping and cut silage on the run off.

PASTURE INFORMATION	Farm			Irrigated			Rain-fed		
	Last Week	This Week	Variation	Last Week	This Week	Variation	Last Week	This Week	Variation
Grazed milking area (ha)	110.5	110.5	0.0	41.0	41.0	0.0	69.5	69.5	0
Rotation Length (days)	34	36	2	38	55	17	31	30	-2
Grazing allocation per day (ha)	3.3	3.1	-0.2	1.1	0.8	-0.3	2.2	2.4	0.1
Average time since last grazed (days)	27	30	3	27	34	7	27	28	1
Leaf appearance rate (days per leaf)	10	10	0	9	9	0	11	11	0
Average Pasture Cover (kgDM/ha)	2365	2488	123	2285	2679	394	2412	2375	-37
Pasture Growth Rate (kgDM/ha/day)	52	70	18	58	95	37	49	56	7
Post Grazing Biomass (kgDM/ha)	1688	1740	52						
Nitrogen applied YTD (kgN/ha)	69	76	7	23	9	-15	10	6	-4

*Please note all pasture calculations detailed above are based on the current Grazed Milking Area

MILK PRODUCTION	Last Week	This Week	Variation
Average No. cows in milk (vat)	324	326	2
Litres per cow	21.4	20.8	-0.6
% Fat	3.99	3.95	-0.04
% Protein	3.05	3.15	0.10
MS/cow/day	1.51	1.47	-0.03
MS/ha/day	4.32	4.25	-0.07
BMCC	120	124	4
Average Liveweight (kg)	499	499	0
	Budget	To Date	Variation
Total Milk Production (kgMS)	70,287	57,772	82%
MS/ha YTD	628	555	-72

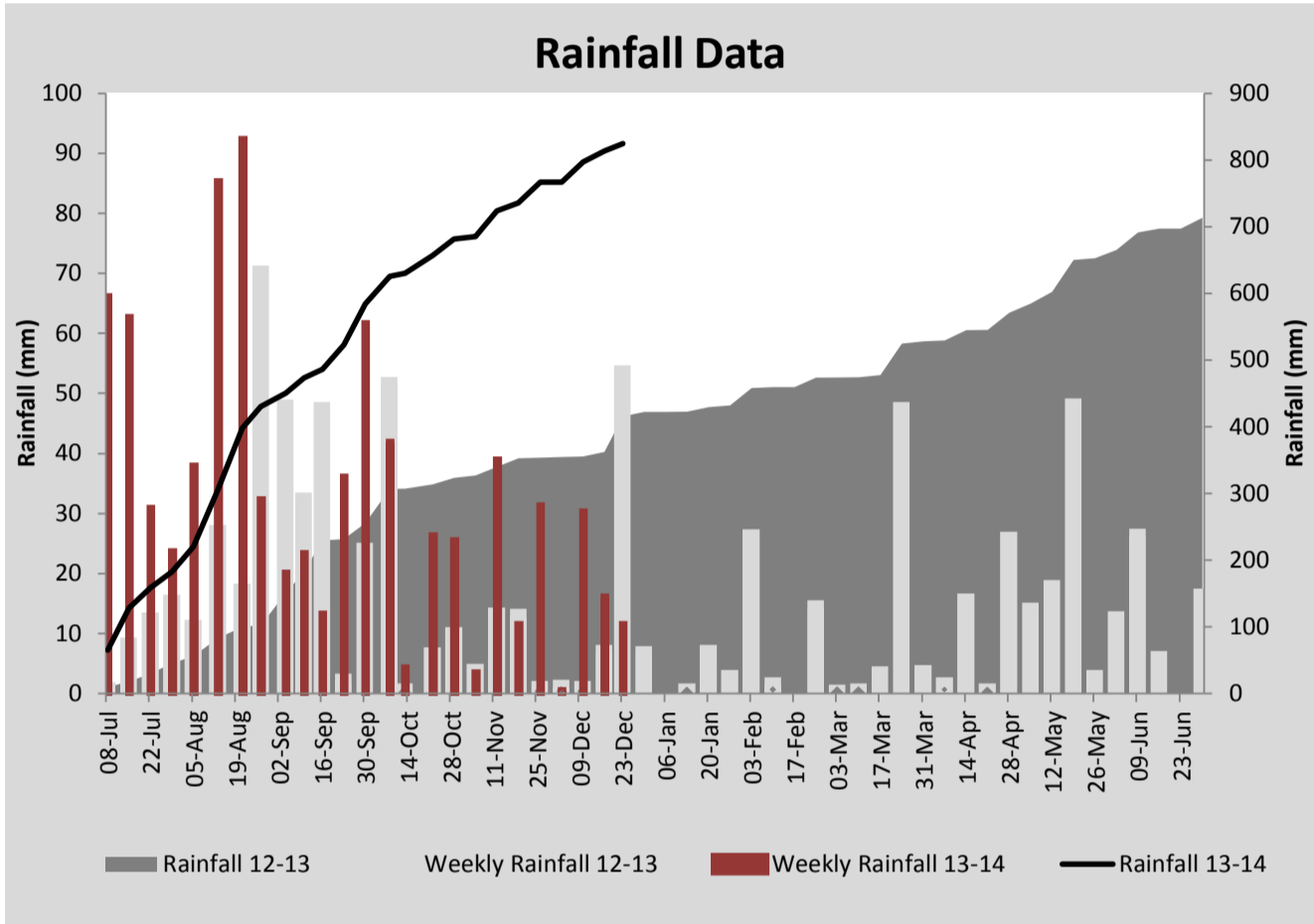
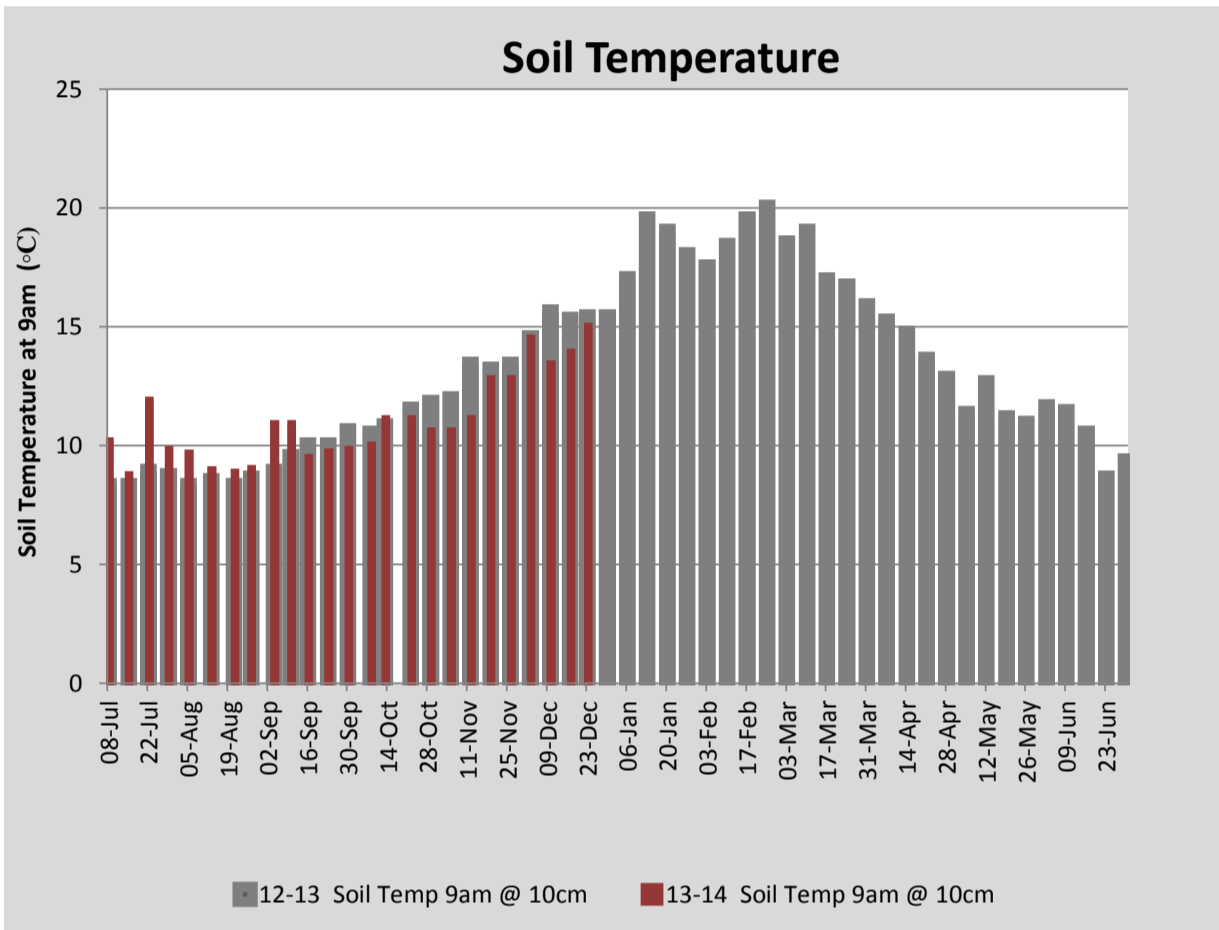


Last 7 days					
Milkers Diet	kg DM	MJ ME	CP (%)	NDF (%)	\$/cow
Pasture Intake	13.6	10.8	15.4	47.5	0.0
Concentrates	4.0	13.0	11.0	21.0	0.0
Silage	1.4	10.5	15.0	49.0	0.0
Grazed forage	0.0	0.0	0.0	0.0	0.0
Other feeds	0.0	0.0	0.0	0.0	0.0
Total	19	213.6	14.4	42.0	0
Target		191	16-18	>33	0

Note: silage nutritional content is estimated based on pasture analysis during silage season, testing will be conducted early in 2014.



Lucerne planted this spring on the run off block



Analysis			
Expected growth rate next 7 days (kgDM/ha/day)	45	Target Leaf Grazing Stage	2.0
Total Demand from Pasture (kgDM/ha/day)	48	Predicted APC 7 days time	2467
APC balance (kgDM/ha/day)	-3	Predicted APC Change	-20.7

Discussion

Average pasture cover has increased this week due to increased soil temperature and strong growth on irrigated paddocks. With a pasture surplus developing, we will look to reduce concentrate to 3.5kgDM/head/day (average) in the coming week. There is currently a surge in reproductive growth which is reducing pasture quality and MS production (down to 1.47kgMS/head/day this week). To manage this we will pre-graze top paddocks if required and/or cut poorer paddocks for hay. This coming week we will look to wean the last of the calves and cut 10ha of run off for silage.

23 December 2013

