

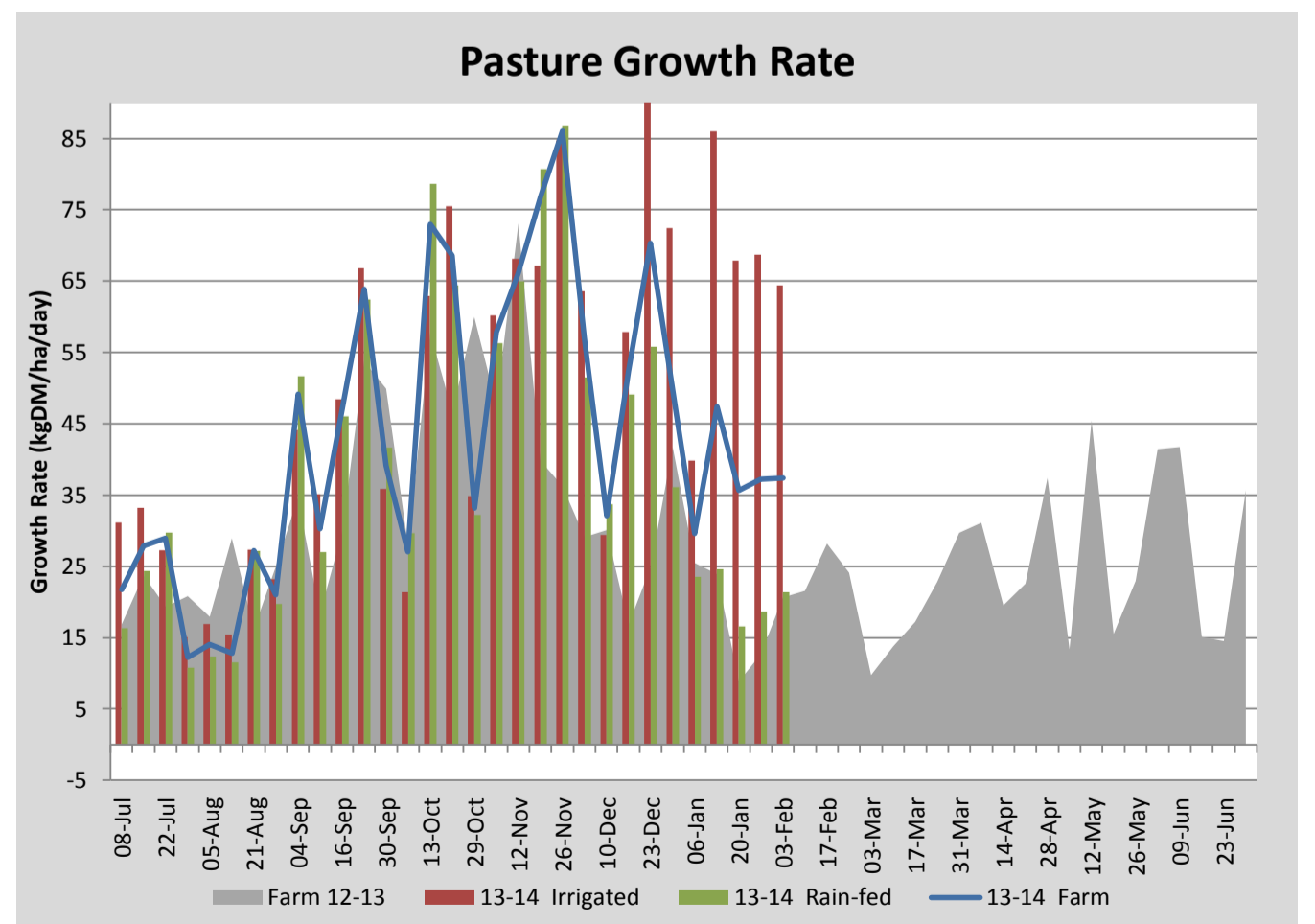
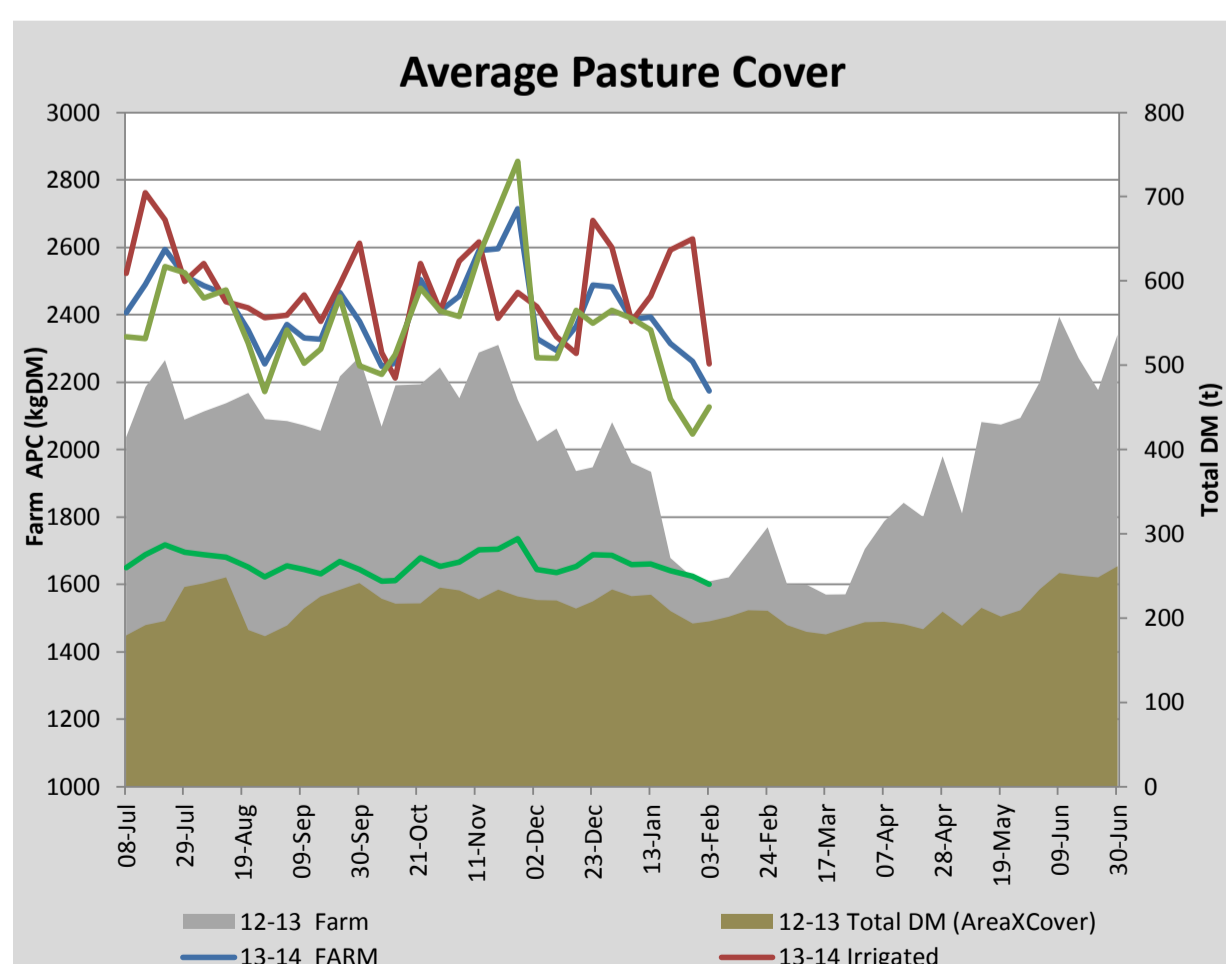
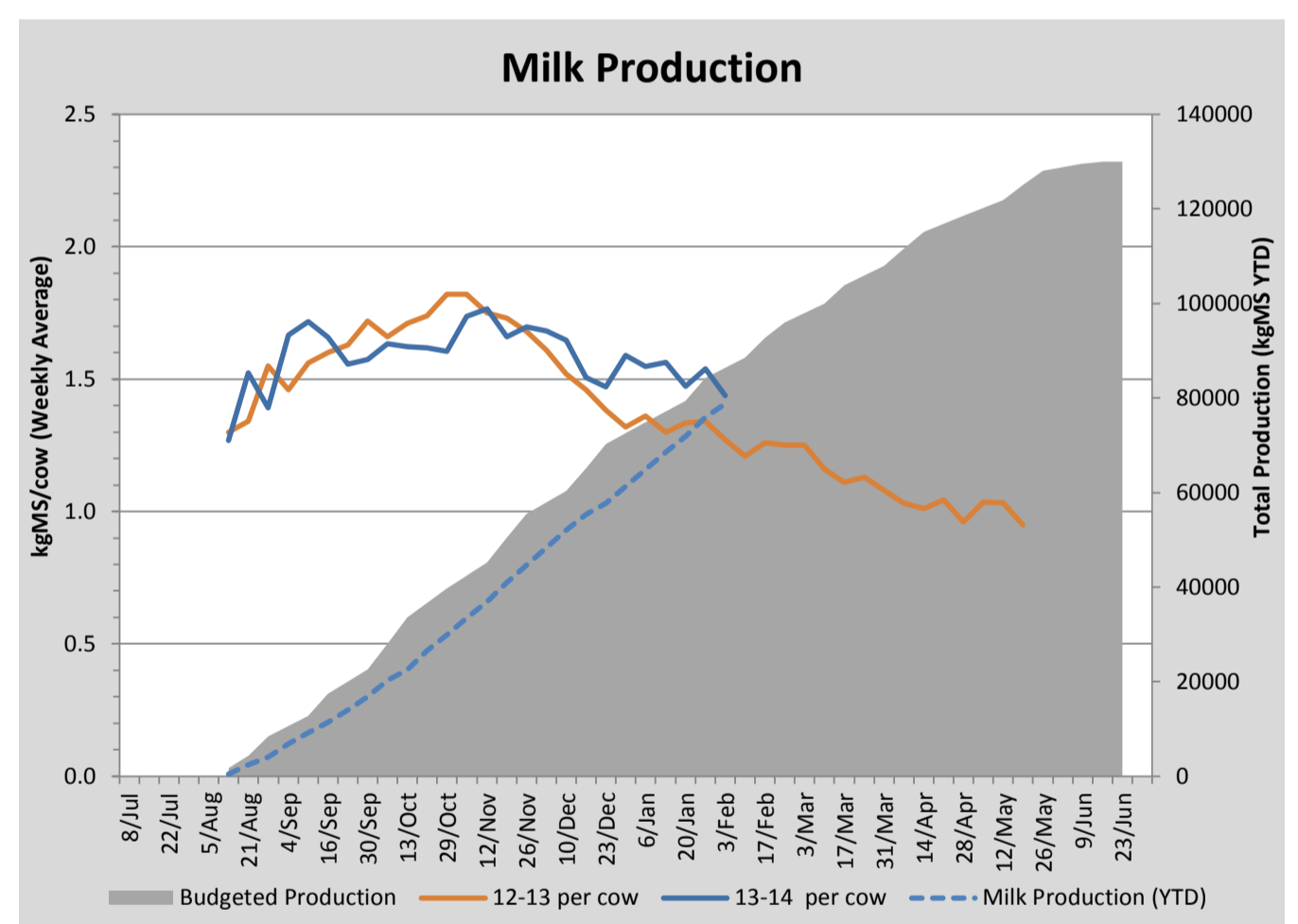
## Key Summary Points

- 1 Average pasture cover continued to fall this week to 2174kgDM/ha with growth rates of irrigated and rainfed paddock relatively stable at 64 kgDM/ha/day and 21 kgDM/ha/day
- 2 Average per cow milk production continues to hold at around 1.5kgMS/day (1.44kgMS/day this week). At present all cows are producing over 1kgMS/day and so none have been dried off.
- 3 Key focuses for the coming week are to develop a feed budget for the remainder of the season and to ensure timely application of urea to irrigated paddocks.

PASTURE INFORMATION	Farm			Irrigated			Rain-fed		
	Last Week	This Week	Variation	Last Week	This Week	Variation	Last Week	This Week	Variation
Grazed milking area (ha)	110.5	110.5	0.0	41.0	41.0	0.0	69.5	69.5	0
Rotation Length (days)	32	31	-2	26	32	6	38	30	-7
Grazing allocation per day (ha)	3.4	3.6	0.2	1.6	1.3	-0.3	1.9	2.3	0.5
Average time since last grazed (days)	35	37	2	29	22	-7	38	46	8
Leaf appearance rate (days per leaf)	12	12	0	9	9	0	14	14	0
Average Pasture Cover (kgDM/ha)	2261	2174	-87	2624	2254	-370	2047	2127	80
Pasture Growth Rate (kgDM/ha/day)	37	37	0	69	64	-4	19	21	3
Post Grazing Biomass (kgDM/ha)	1661	1590	-71						
Nitrogen applied YTD (kgN/ha)	101	101	0	16	0	-16	8	0	-8

\*Please note all pasture calculations detailed above are based on the current Grazed Milking Area

MILK PRODUCTION	Last Week	This Week	Variation
Average No. cows in milk (vat)	329	329	0
Litres per cow	20.6	19.6	-1.0
% Fat	4.23	4.14	-0.09
% Protein	3.20	3.02	-0.18
MS/cow/day	1.54	1.44	-0.10
MS/ha/day	4.48	4.19	-0.29
BMCC	159	147	-11
Average Liveweight (kg)	507	509	2
	Budget	To Date	Variation
Total Milk Production (kgMS)	86,388	78,806	91%
MS/ha YTD	771	746	-25

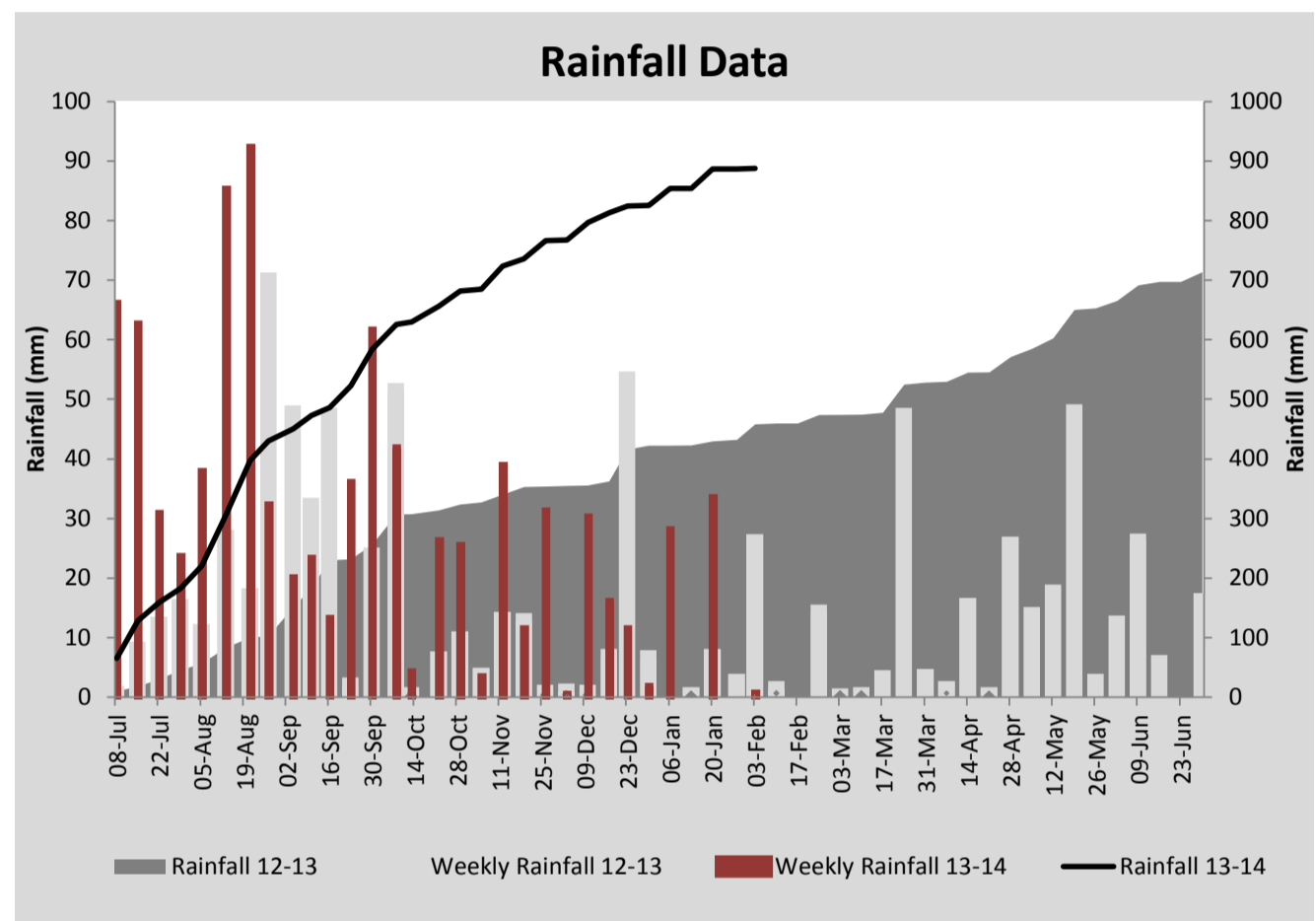
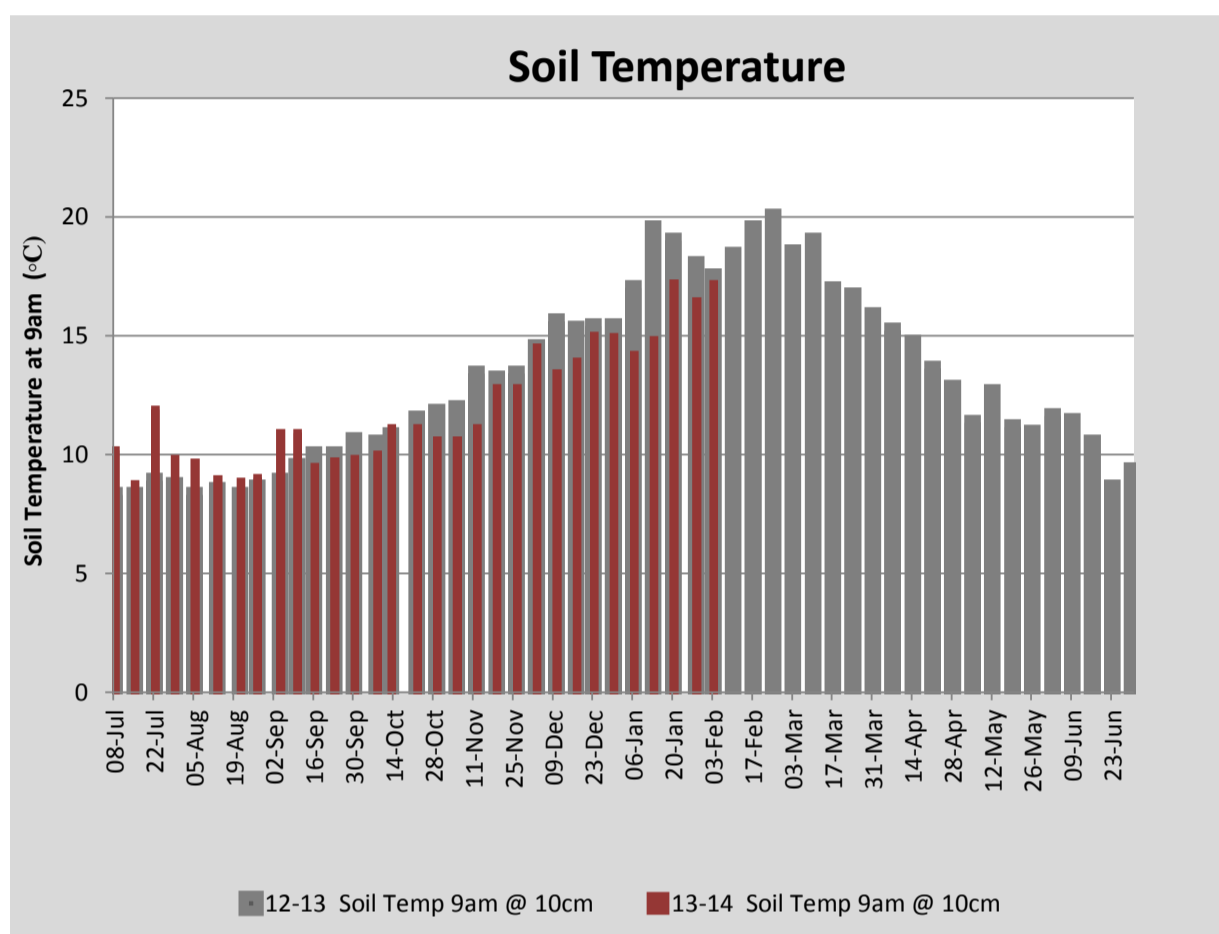


Last 7 days					
Milkers Diet	kg DM	MJ ME	CP (%)	NDF (%)	\$/cow
Pasture Intake	14.4	11.7	18.4	46.6	0.0
Concentrates	3.5	13.0	11.0	21.0	0.0
Silage	1.1	10.5	15.0	49.0	0.0
Grazed forage	0.0	0.0	0.0	0.0	0.0
Other feeds	0.0	0.0	0.0	0.0	0.0
<b>Total</b>	<b>19</b>	<b>225.6</b>	<b>16.8</b>	<b>42.0</b>	<b>0</b>
<b>Target</b>		<b>191</b>	<b>16-18</b>	<b>&gt;33</b>	<b>0</b>

Note: silage nutritional content is estimated based on pasture analysis during silage season, testing will be conducted early in 2014.



More Milk From Forages (MMFF) cover cropping experiment: Rape undersown with clover and plantain. Estimated yield 5tDM/ha, dryland



Analysis			
Expected growth rate next 7 days (kgDM/ha/day)	30	Target Leaf Grazing Stage	2.5
Total Demand from Pasture (kgDM/ha/day)	36	Predicted APC 7 days time	2136
APC balance (kgDM/ha/day)	-5	Predicted APC Change	-38.2

## Discussion

Average pasture cover has decreased this week to 2174kgDM/ha with growth on the irrigated and rain fed paddocks holding a 60 and 21kgDM/ha/day respectively. We expect cover to hold into the coming week with grain allocation being boosted to 4.5kgDM/head/day (average) and silage being lifted to approximately 1.8kgDM/head/day. Average per cow milk production continues to hold at around 1.5kgMS/day (1.44kgMS/day this week). At present all cows are producing over 1kgMS/day and so none have been dried off. R1 and R2 heifers were weighed this week with R2's averaging 387kg (above target) and R1's averaging 138 kg (a little below target). Key focuses for the coming week are to develop a feed budget for the remainder of the season and to ensure timely application of urea to irrigated paddocks.

# 3 February 2014

