

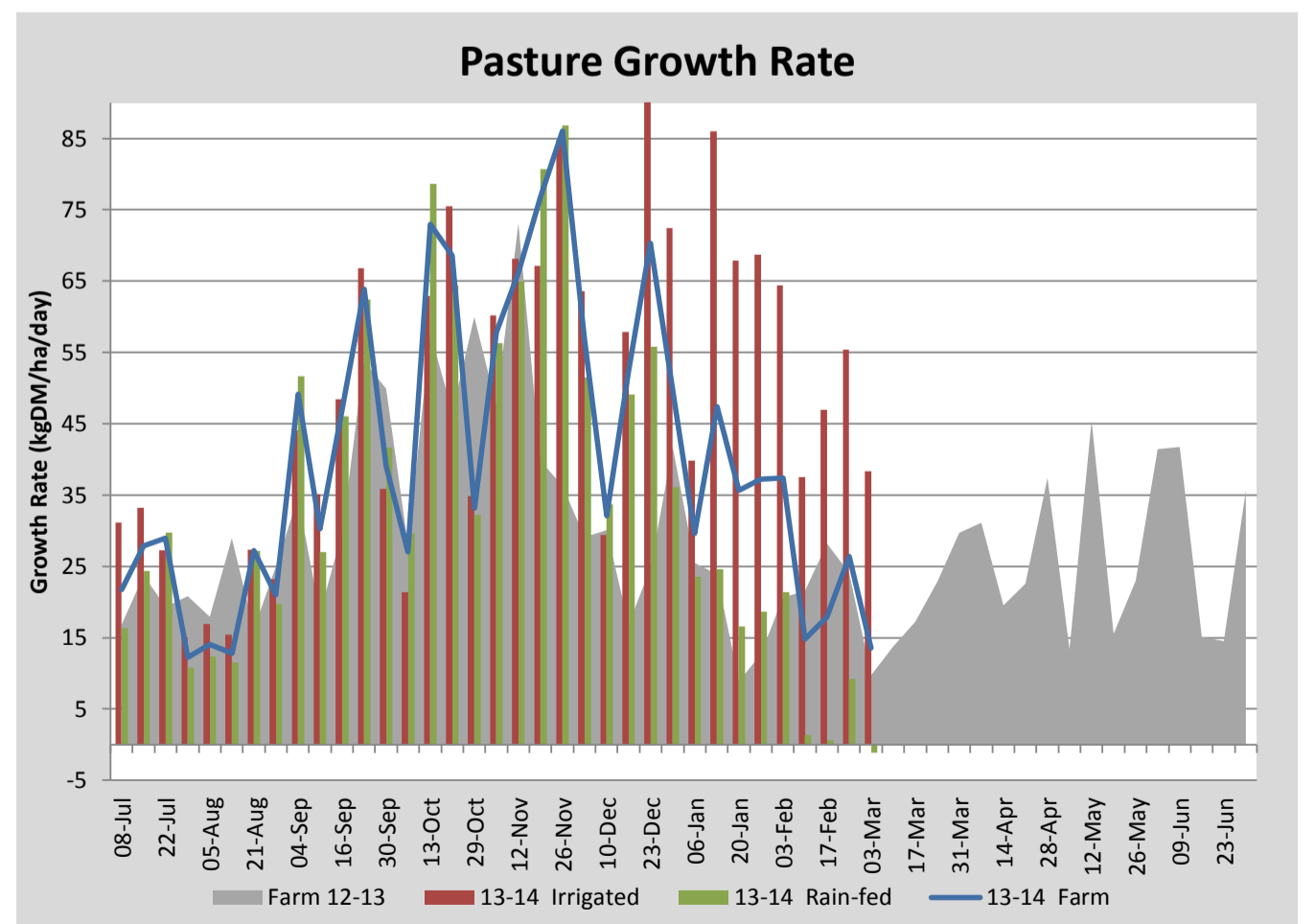
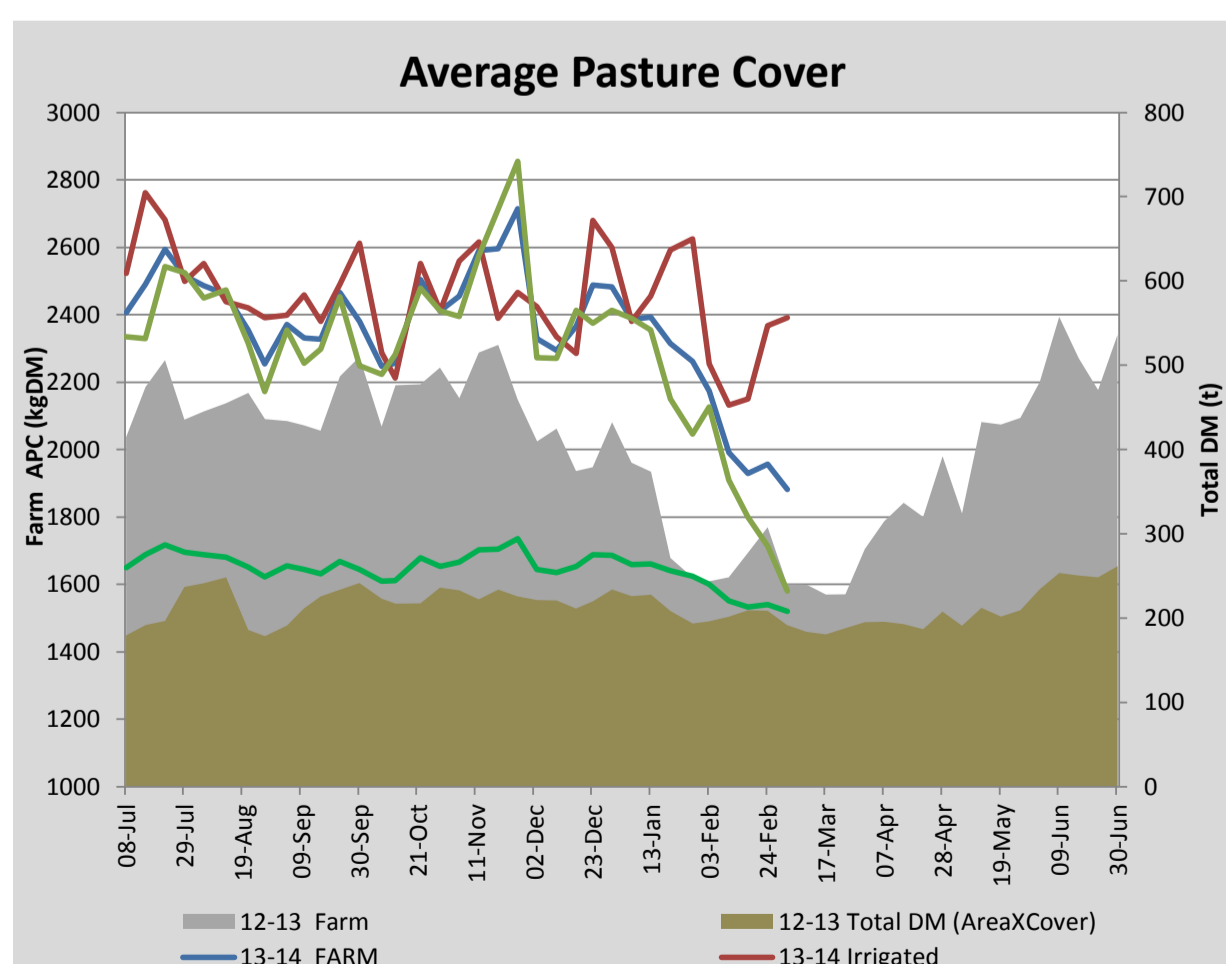
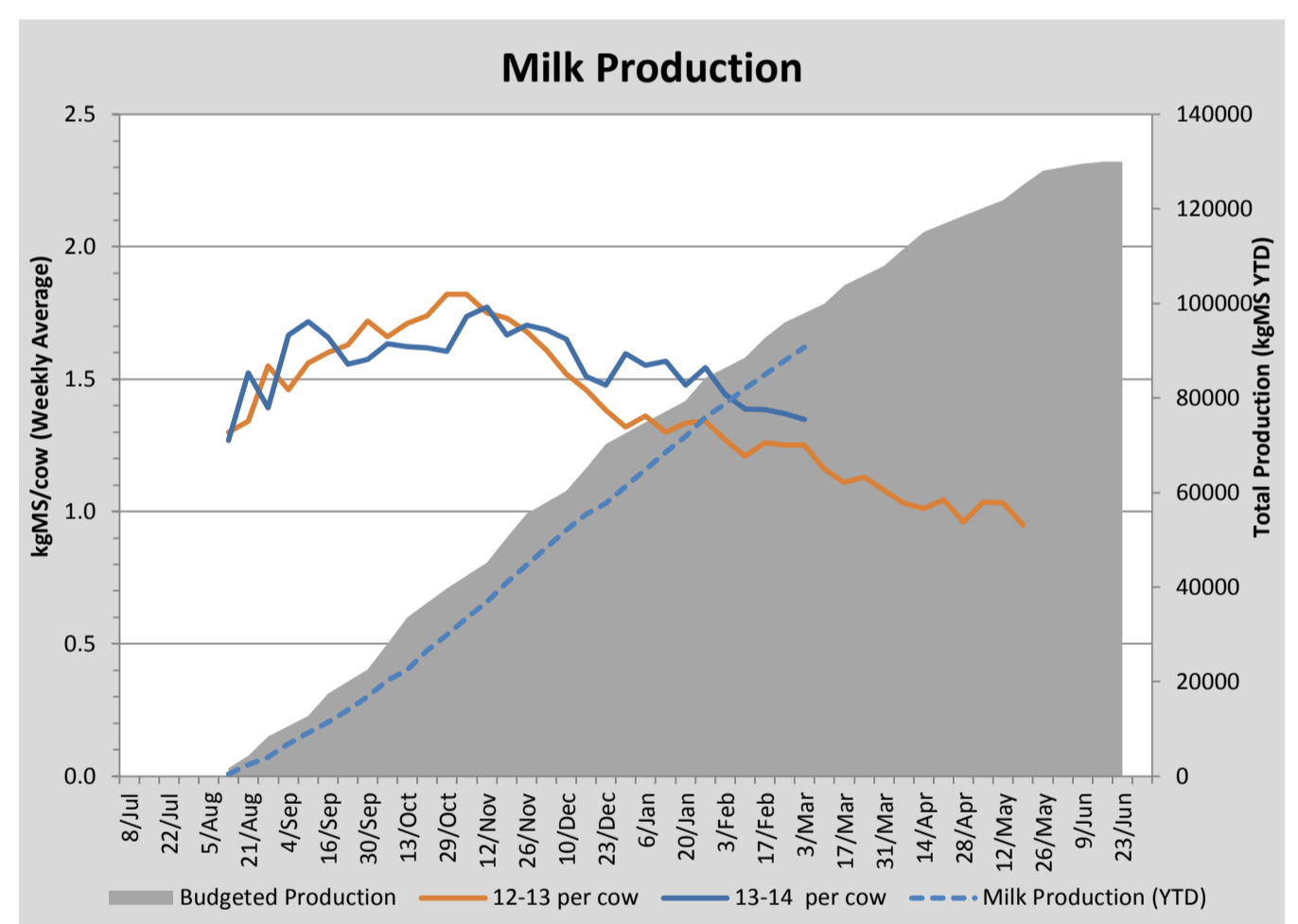
Key Summary Points

- 1 Average pasture cover decreased this week to 1881kgDM/ha due to desiccation and shrinkage of last weeks growth on the rainfed paddocks and slashing post grazing to residuals of 1350kgDM/ha.
- 2 Cows were body condition scored this week and had an average score of 4.8.
- 3 Focus for the coming week is to ensure timely urea applications to the irrigated paddocks and increase the rotation length on the rainfed portion of the platform.

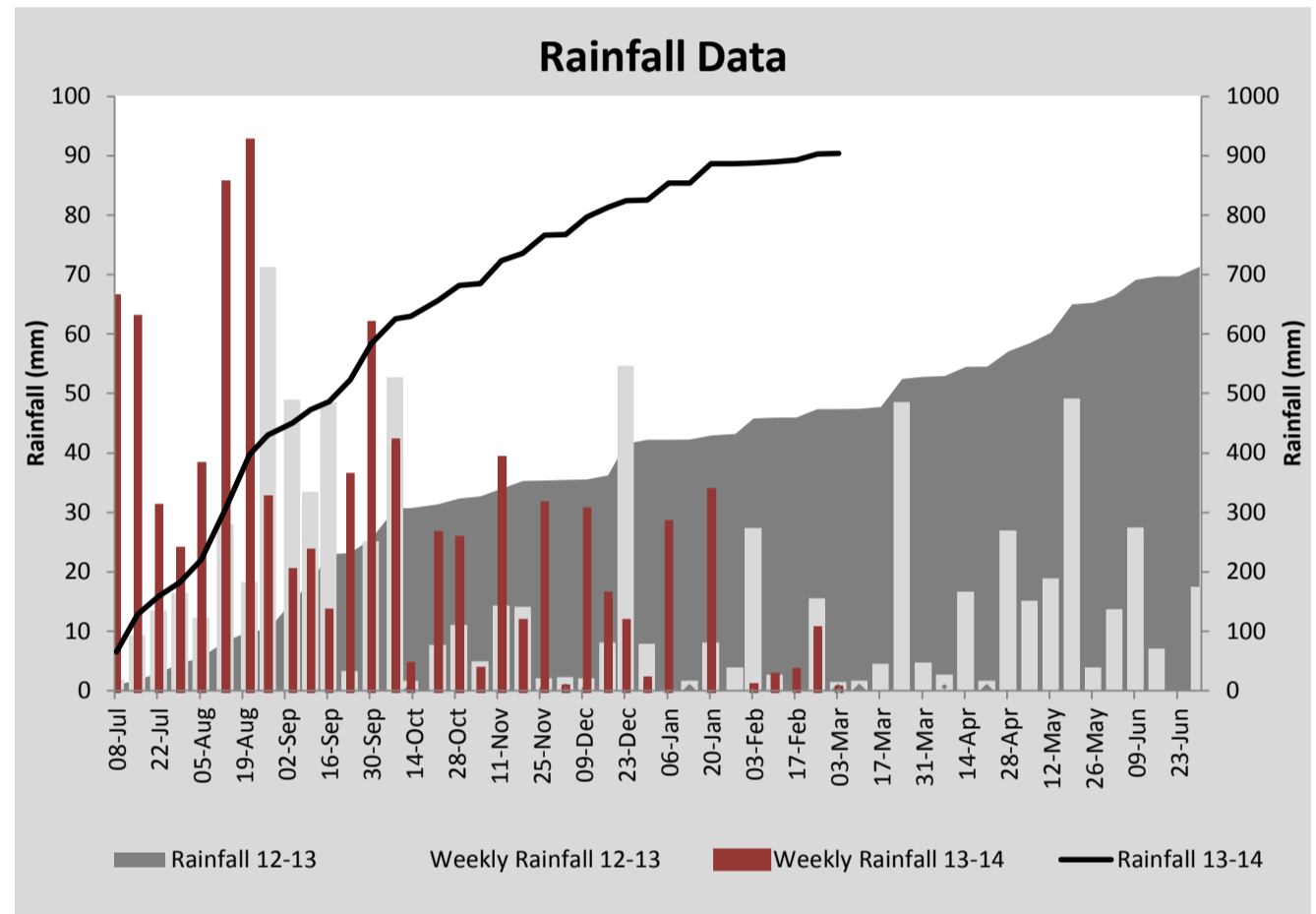
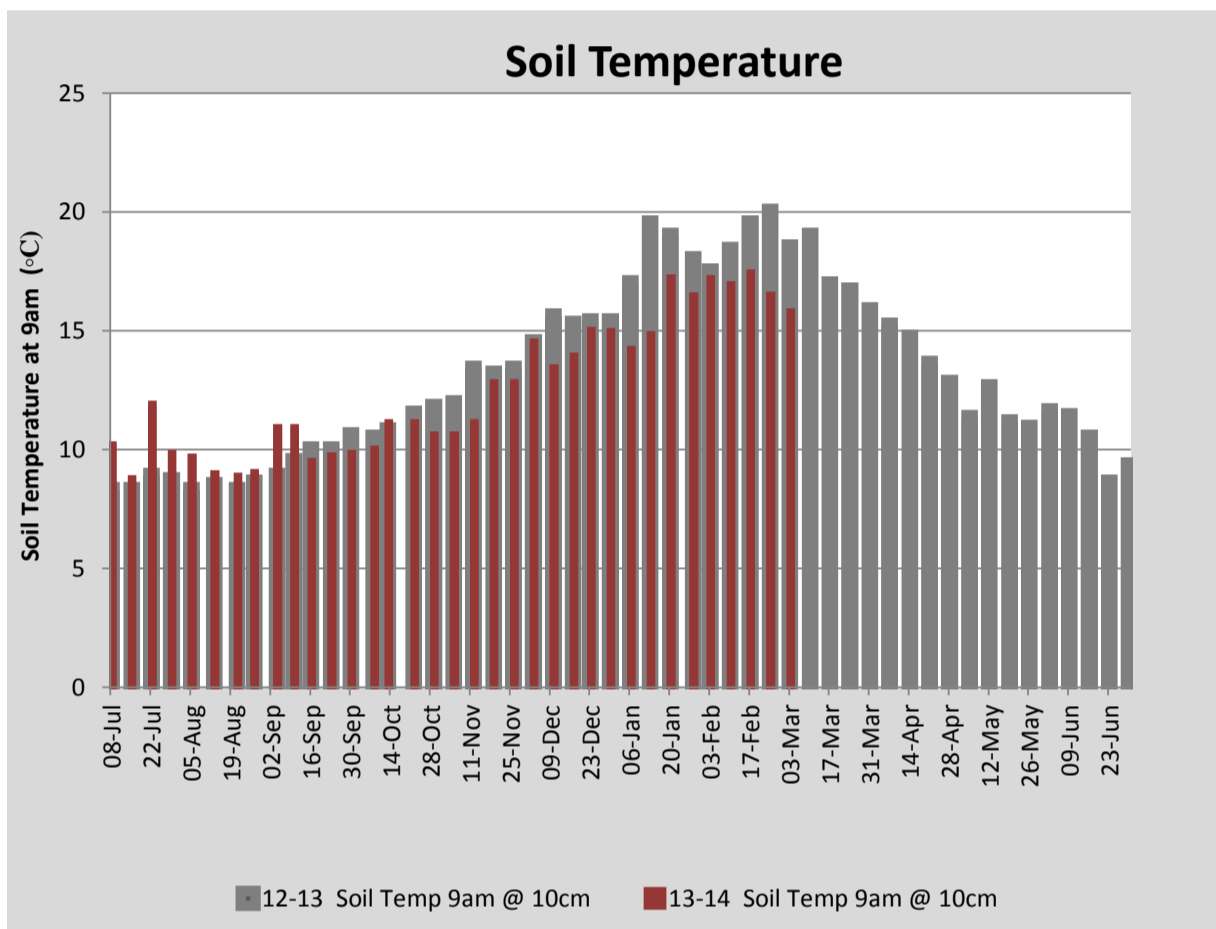
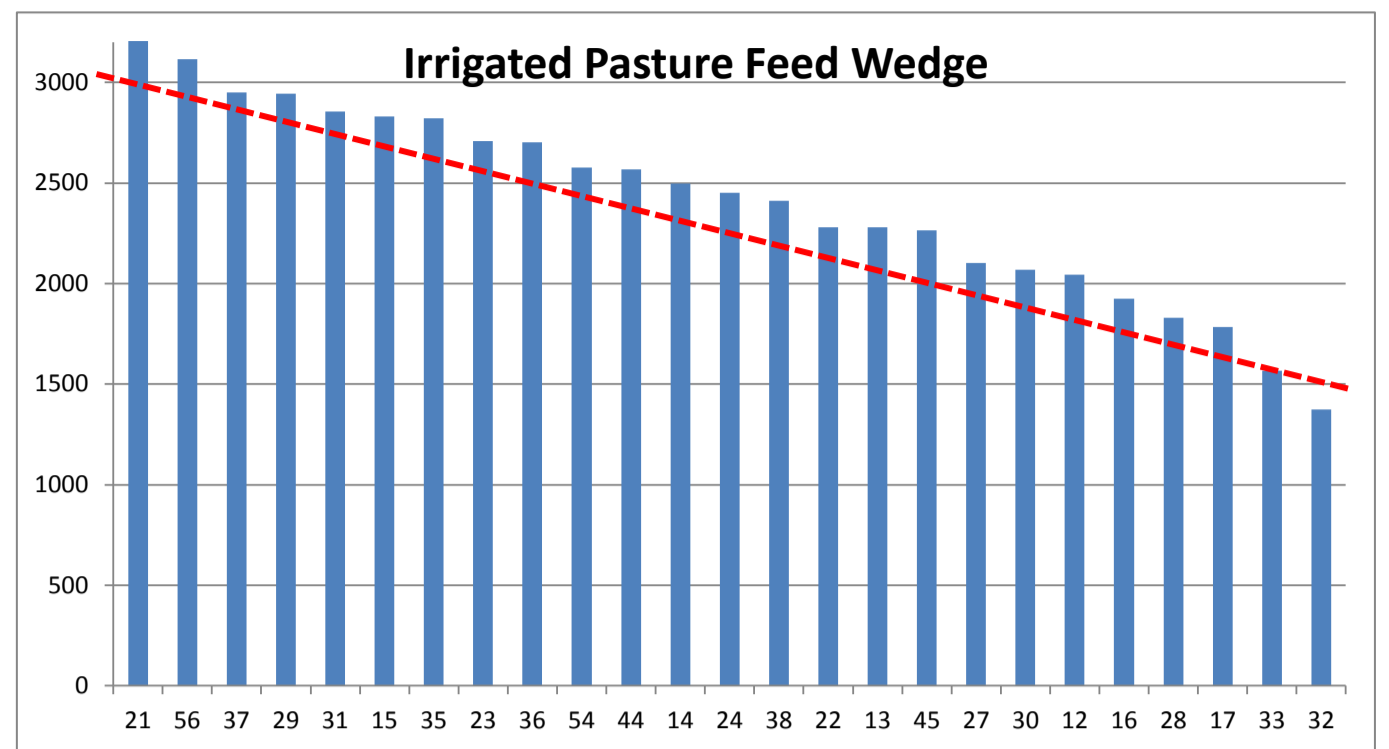
PASTURE INFORMATION	Farm			Irrigated			Rain-fed		
	Last Week	This Week	Variation	Last Week	This Week	Variation	Last Week	This Week	Variation
Grazed milking area (ha)	110.5	110.5	0.0	41.0	41.0	0.0	69.5	69.5	0
Rotation Length (days)	43	46	4	46	46	0	41	46	5
Grazing allocation per day (ha)	2.6	2.4	-0.2	0.9	0.9	0.0	1.7	1.5	-0.2
Average time since last grazed (days)	37	43	6	19	28	9	48	52	4
Leaf appearance rate (days per leaf)	15	20	5	9	10	1	19	26	7
Average Pasture Cover (kgDM/ha)	1957	1881	-76	2367	2391	24	1714	1579	-135
Pasture Growth Rate (kgDM/ha/day)	26	14	-13	55	38	-17	9	-1	-10
Post Grazing Biomass (kgDM/ha)	1425	1350	-75						
Nitrogen applied YTD (kgN/ha)	108	108	0	1	0	-1	0	0	0

*Please note all pasture calculations detailed above are based on the current Grazed Milking Area

MILK PRODUCTION	Last Week	This Week	Variation
Average No. cows in milk (vat)	302	305	3
Litres per cow	17.7	16.7	-1.0
% Fat	4.46	4.67	0.21
% Protein	3.37	3.41	0.04
MS/cow/day	1.37	1.35	-0.02
MS/ha/day	3.66	3.64	-0.02
BMCC	120	158	38
Average Liveweight (kg)	519	523	4
	Budget	To Date	Variation
Total Milk Production (kgMS)	97,977	90,785	93%
MS/ha YTD	875	855	-20



Last 7 days					
Milkers Diet	kg DM	MJ ME	CP (%)	NDF (%)	\$/cow
Pasture Intake	8.8	11.0	13.8	52.0	0.0
Concentrates	4.5	13.0	11.0	21.0	0.0
Silage	3.7	10.5	15.0	49.0	0.0
Grazed forage	0.0	0.0	0.0	0.0	0.0
Other feeds	0.0	0.0	0.0	0.0	0.0
Total	17	193.7	13.3	43.1	0
Target		191	16-18	>33	0



Analysis			
Expected growth rate next 7 days (kgDM/ha/day)	14	Target Leaf Grazing Stage	3.0
Total Demand from Pasture (kgDM/ha/day)	22	Predicted APC 7 days time	1823
APC balance (kgDM/ha/day)	-8	Predicted APC Change	-58.0

Discussion

Average pasture cover has dropped significantly this week with desiccation and shrinkage of last week's growth on the rainfed paddocks along with post grazing slashing to 1350kgDM/ha. Post grazing slashing has been mainly restricted to rainfed cocksfoot paddocks with reproductive, stemmy material. By slashing these to a low residual now we hope to create quality regrowth when the autumn rains arrive. APC on the irrigated area is holding at around 2400kgDM/ha. We expect this to drop over the coming weeks as we extend the rotation length on the rainfed portion and rely more on the irrigated pasture. We will look to boost the concentrate feeding rate of non-trial cows (142) to 6kgDM/cow/day (4.98kgDM/cow/day average for the herd) in the coming week to compensate for decreased pasture availability. Per cow milksolid production continues to decline slowly, dropping to 1.35kgMS/cow/day this week. Cows were body condition scored this week and had an average score of 4.8.

3 March 2014

