

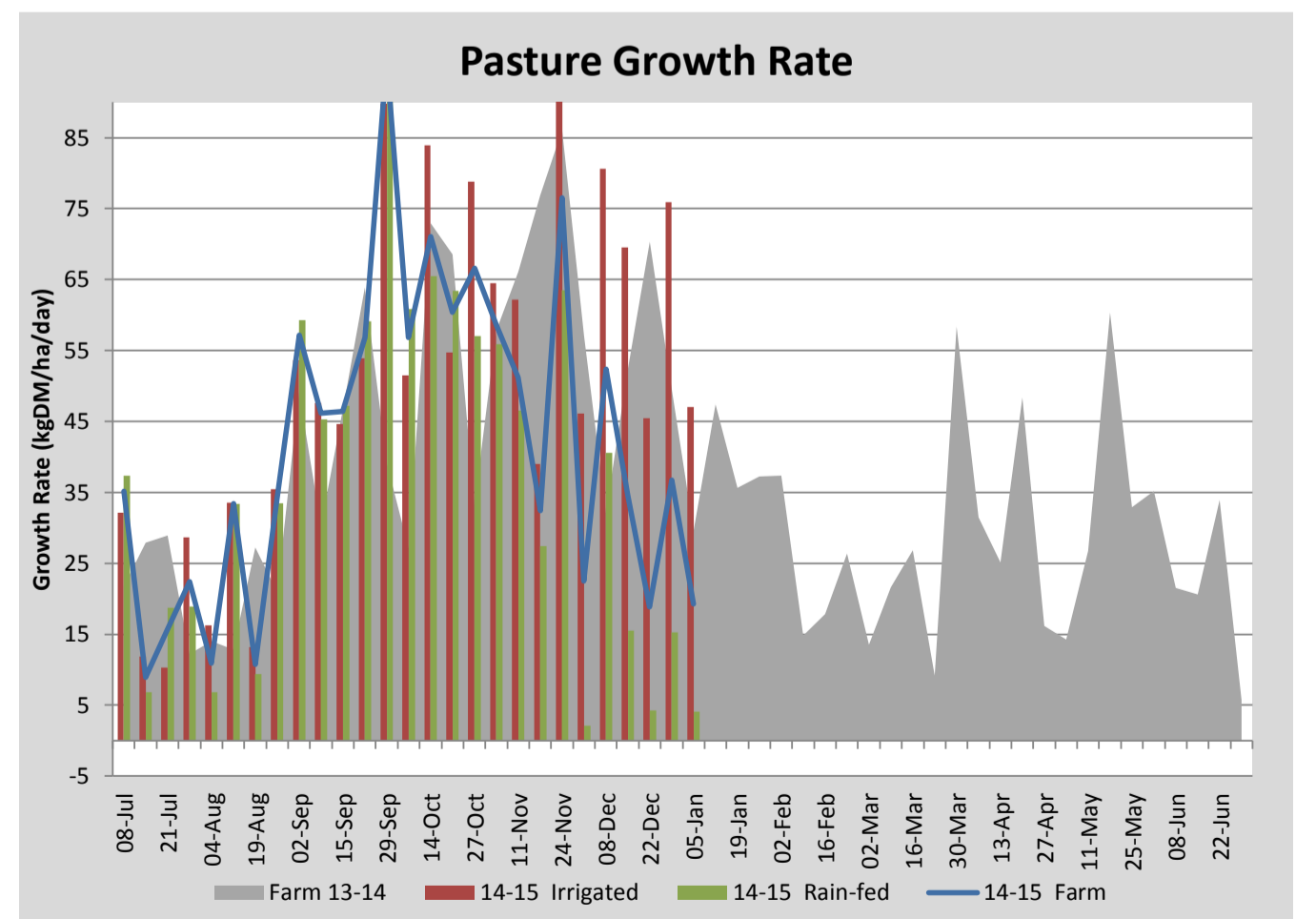
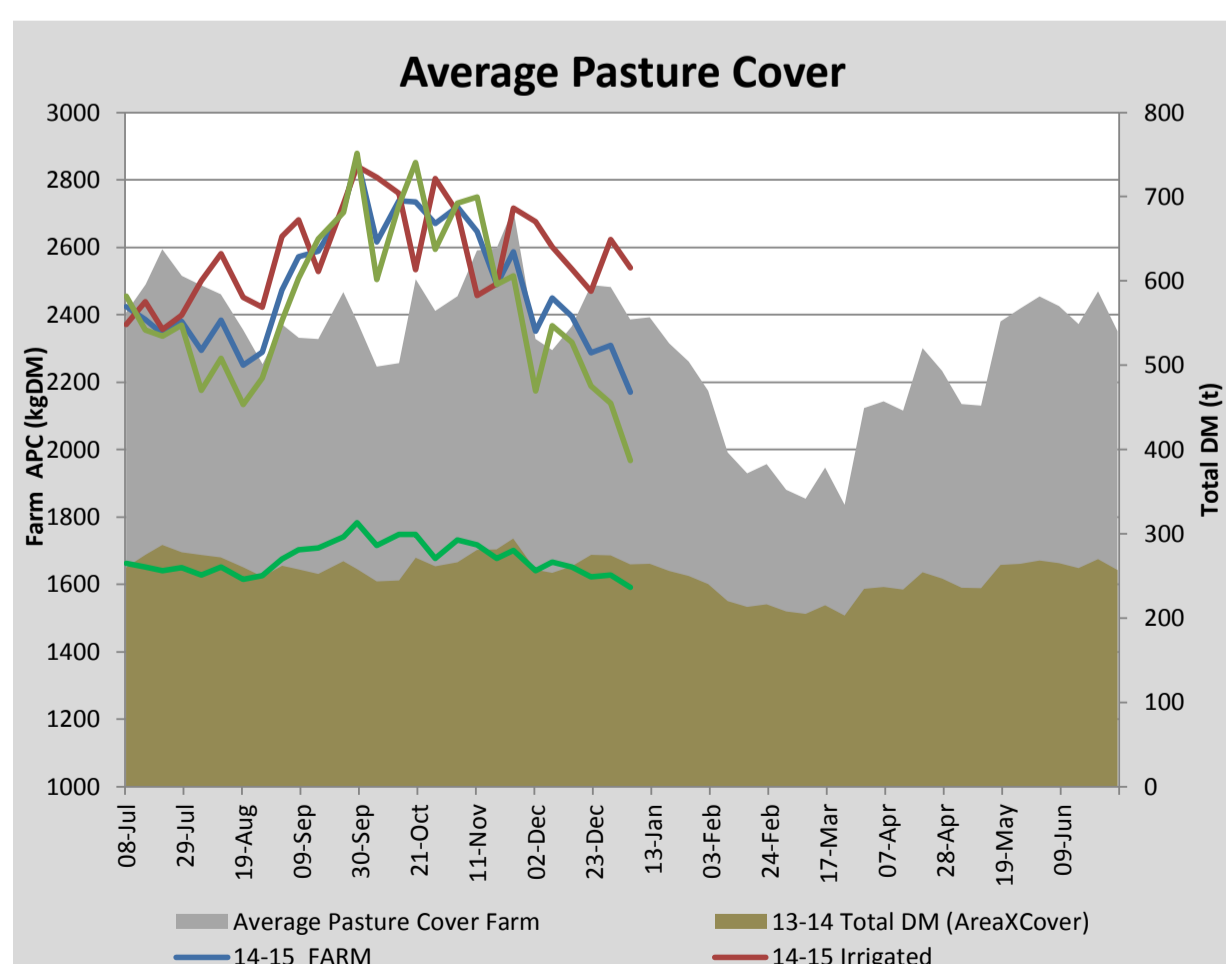
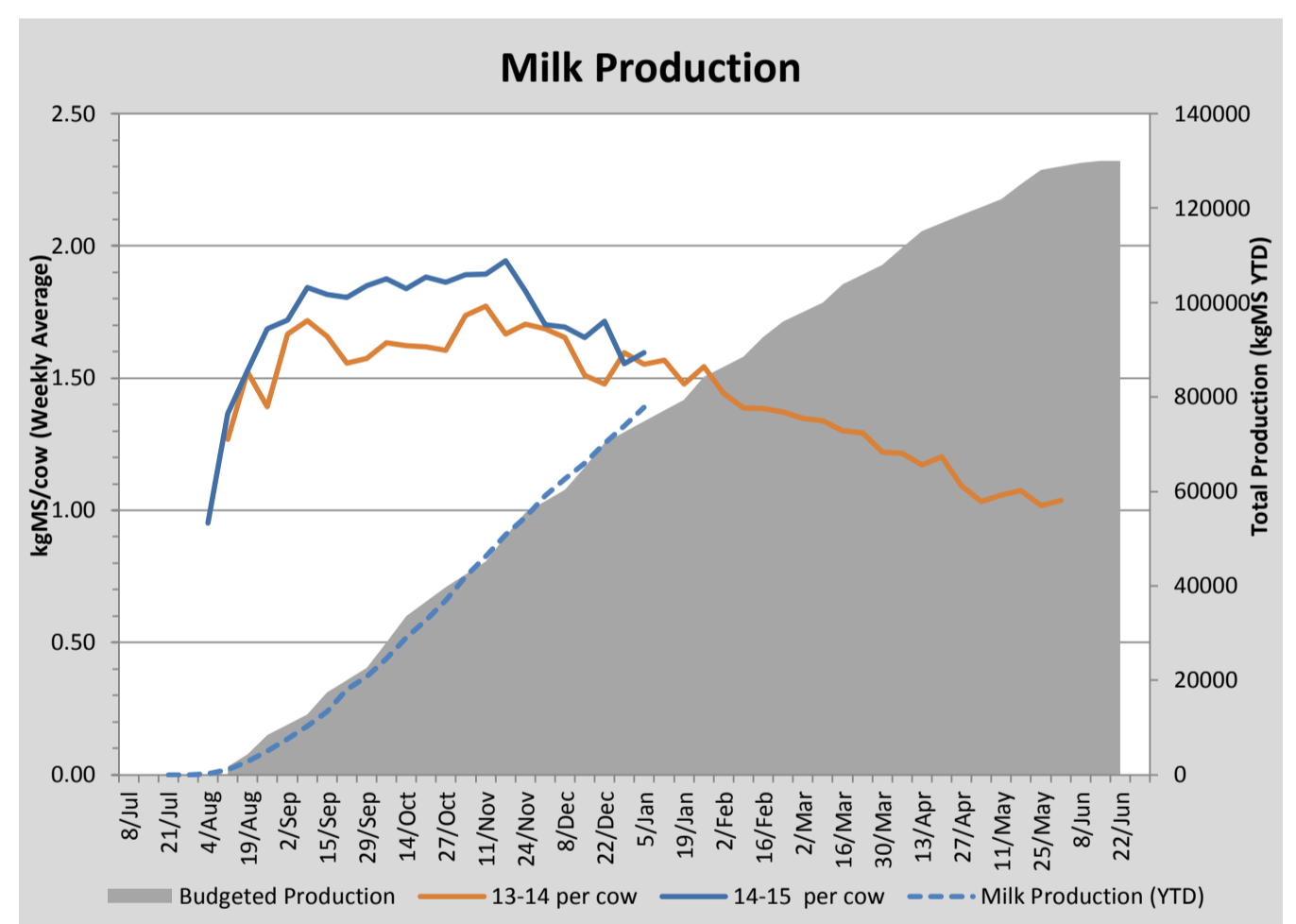
Key Summary Points

- 1 Average pasture cover has dropped to 2170kgDM/ha with dry weather seeing growth on the rain fed paddocks reduced to 4kgDM/ha/day and irrigation system breakdowns leading to reduced growth rates on the irrigated ground
- 2 With a significant feed deficit visible in the feed wedge we will be reducing the daily total DM allocation to 16.5kgDM/cow/day this coming week, upping the grain to 5kg/cow/day and silage to 3.6kgDM/cow/day
- 3 Key focus for the coming week is to monitor irrigation and to plant the winter crop (kale)

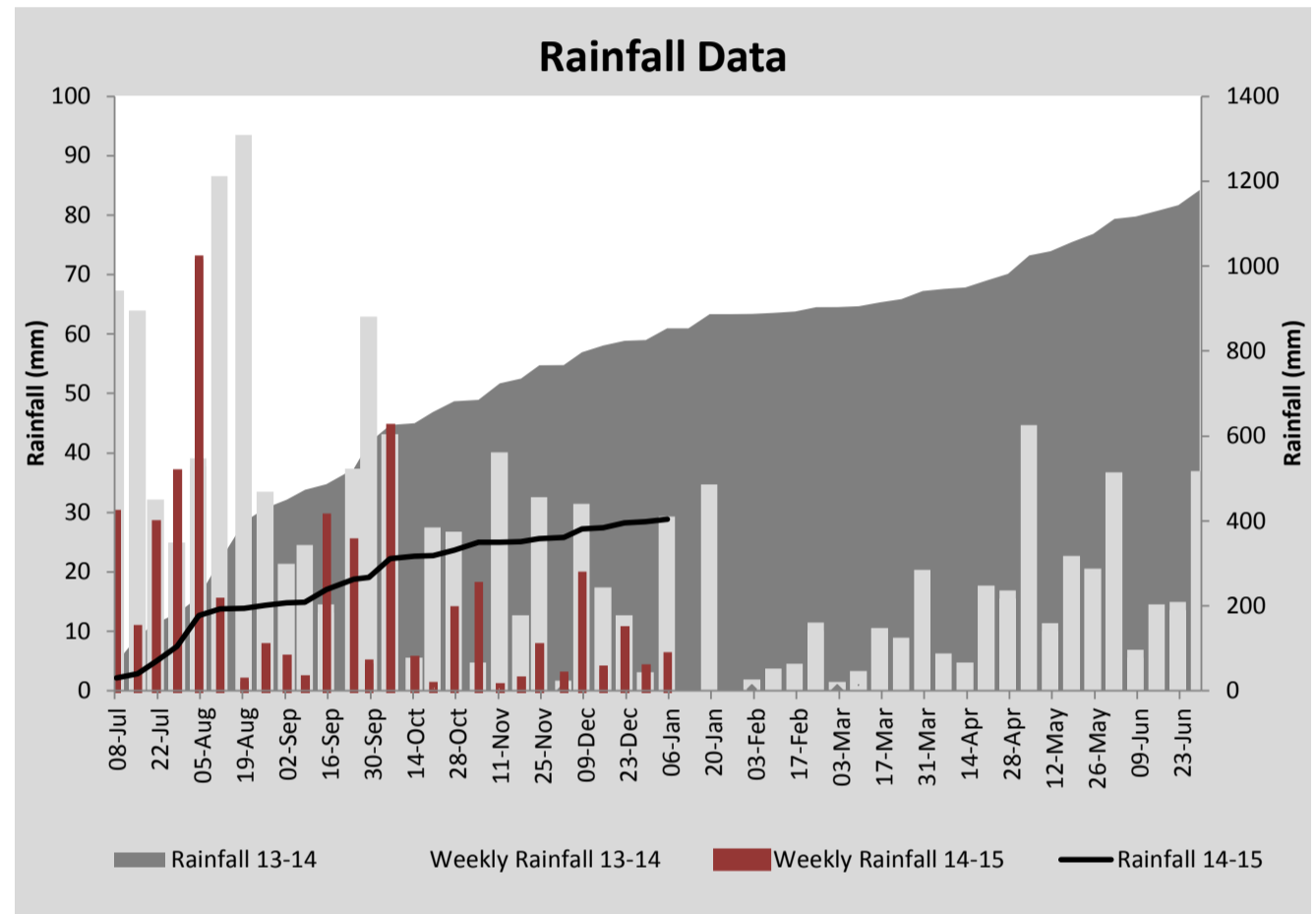
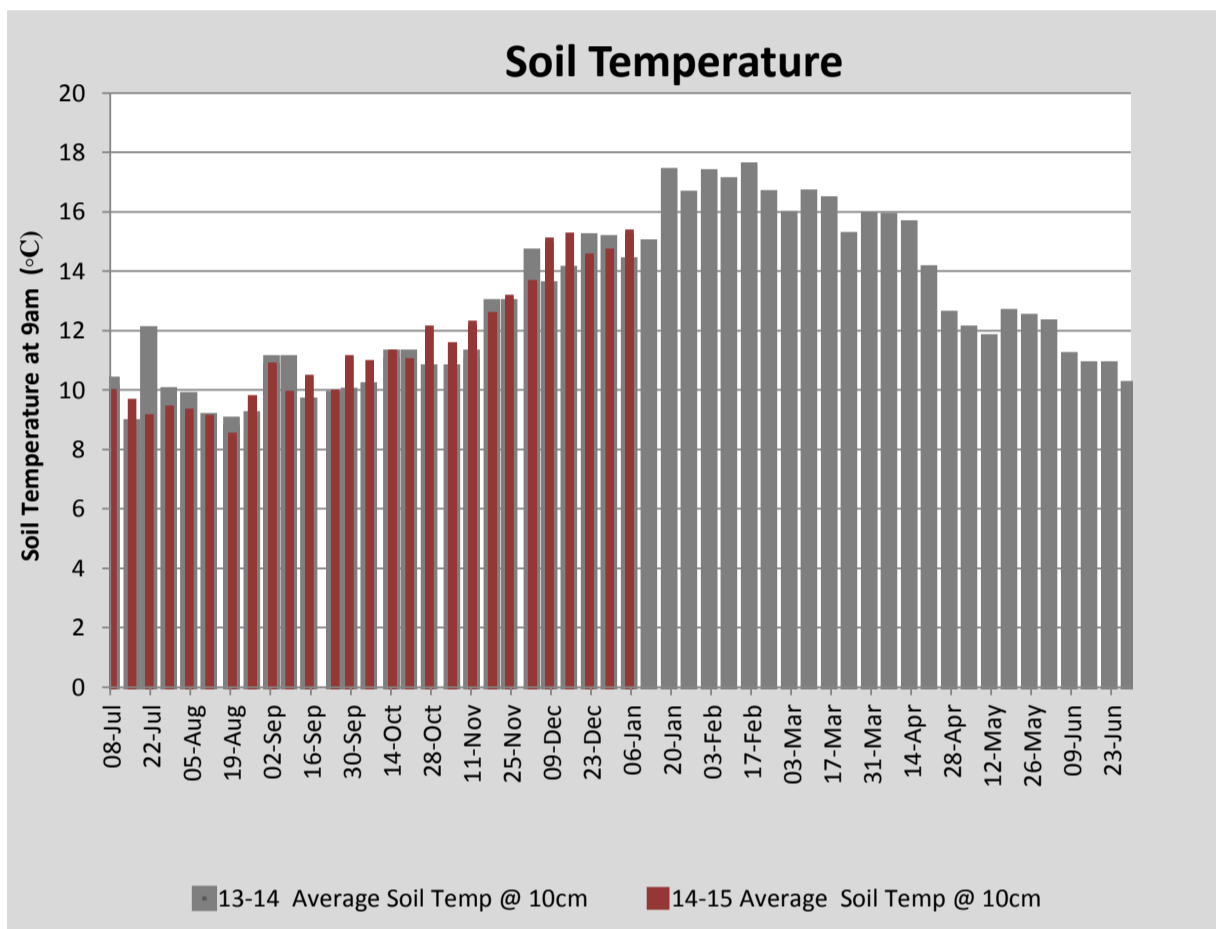
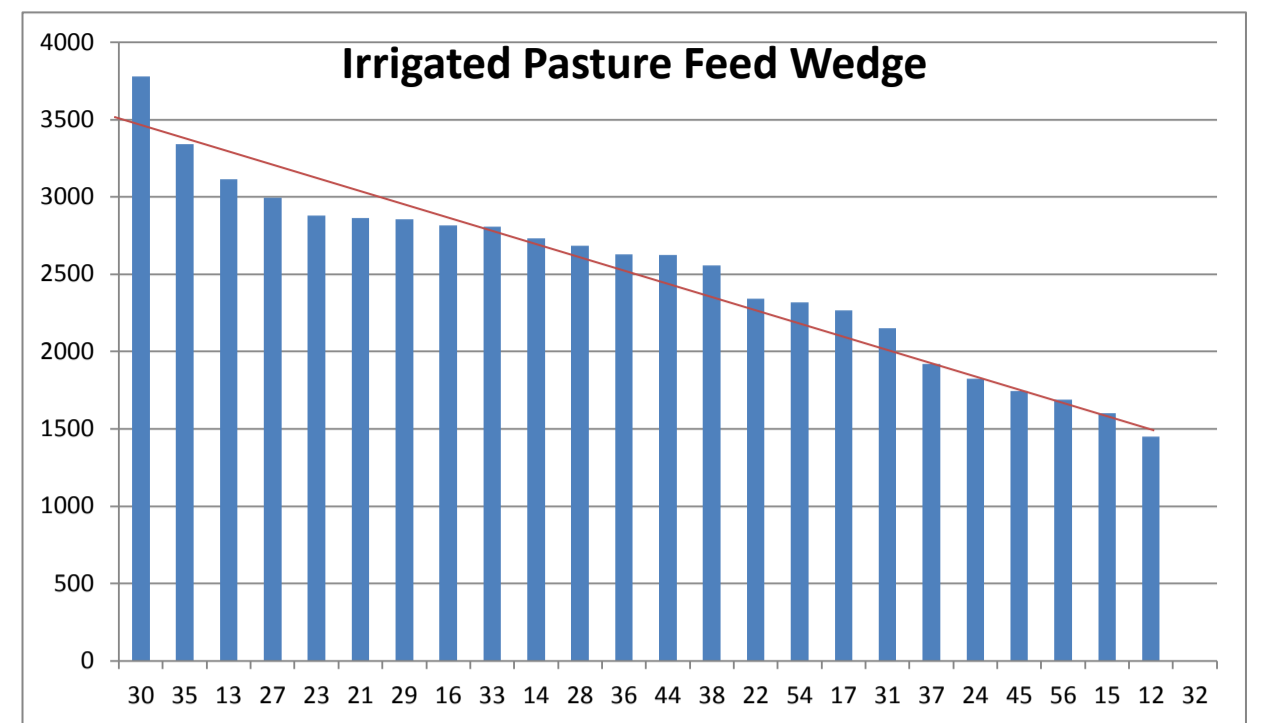
PASTURE INFORMATION	Farm			Irrigated			Rain-fed		
	Last Week	This Week	Variation	Last Week	This Week	Variation	Last Week	This Week	Variation
Grazed milking area (ha)	108.8	108.8	0.0	38.4	38.4	0.0	70.4	70.4	0
Rotation Length (days)	44	64	20	27	30	2	64	176	112
Grazing allocation per day (ha)	2.5	1.7	-0.8	1.4	1.3	-0.1	1.1	0.4	-0.7
Average time since last grazed (days)	43	39	-4	25	27	2	53	46	-7
Leaf appearance rate (days per leaf)	11	11	0	10	10	0	12	12	0
Average Pasture Cover (kgDM/ha)	2309	2170	-139	2623	2540	-83	2137	1968	-170
Pasture Growth Rate (kgDM/ha/day)	37	19	-17	76	47	-29	15	4	-11
Post Grazing Biomass (kgDM/ha)	1735	1563	-172						
Nitrogen applied YTD (kgN/ha)	119	119	0	13	0	-13	0	0	0

*Please note all pasture calculations detailed above are based on the current Grazed Milking Area

MILK PRODUCTION	Last Week	This Week	Variation
Average No. cows in milk (vat)	356	359	3
Litres per cow	20.8	20.7	-0.1
% Fat	4.19	4.44	0.25
% Protein	3.36	3.25	-0.11
MS/cow/day	1.56	1.60	0.04
MS/ha/day	4.90	5.07	0.17
BMCC	104	106	
Average Liveweight (kg)	497	497	
	Budget	To Date	Variation
Total Milk Production (kgMS)	74,878	77,808	104%
MS/ha YTD	669	756	88



Last 7 days					
Milkers Diet	kg DM	MJ ME	CP (%)	NDF (%)	\$/cow
Pasture Intake	9.7	10.5	18.5	50.2	0.0
Concentrates	4.7	12.8	12.3	16.5	0.0
Silage	3.1	11.0	15.0	49.0	0.0
Grazed forage	0.0	0.0	0.0	0.0	0.0
Other feeds	0.0	0.0	0.0	0.0	0.0
Total	17.5	196	16.2	41.0	0
Target		191	16-18	>33	0



Analysis			
Expected growth rate next 7 days (kgDM/ha/day)	20	Target Leaf Grazing Stage	2.5-3.0
Total Demand from Pasture (kgDM/ha/day)	26	Predicted APC 7 days time	2129
APC balance (kgDM/ha/day)	-6	Predicted APC Change	-40.9

Discussion

Average pasture cover dropped further this week to 2170kgDM/ha with growth on the dryland portion of the platform all but stopping and growth slowing on the irrigated paddocks due to problems with the irrigation controller. With a significant feed deficit visible in the feed wedge we will look to reduce the total daily DM allocation further this coming week to 16.5kgDM/cow/day and increase the gain allocation to 5kgDM/cow/day. Looking ahead, as cover on the dryland portion of the platform becomes limiting we will start drying off low producers in order to reduce the herd to a number that can be sustained by the irrigated paddocks. The pasja crop has reached maturity however we will defer grazing for as long as possible in order to increase yield. The winter Kale crop will be planted this coming week, direct drilling into the stubble of the pea and oat silage crop. The crop will be sown at 5kg/ha and top dressed with 300kg/ha DAP. We will spray prior to emergence with chlorpyrifos to control army worm. We will wean all remaining calves this coming week and hope to sort and sell surplus heifer calves.

5 January 2015

