

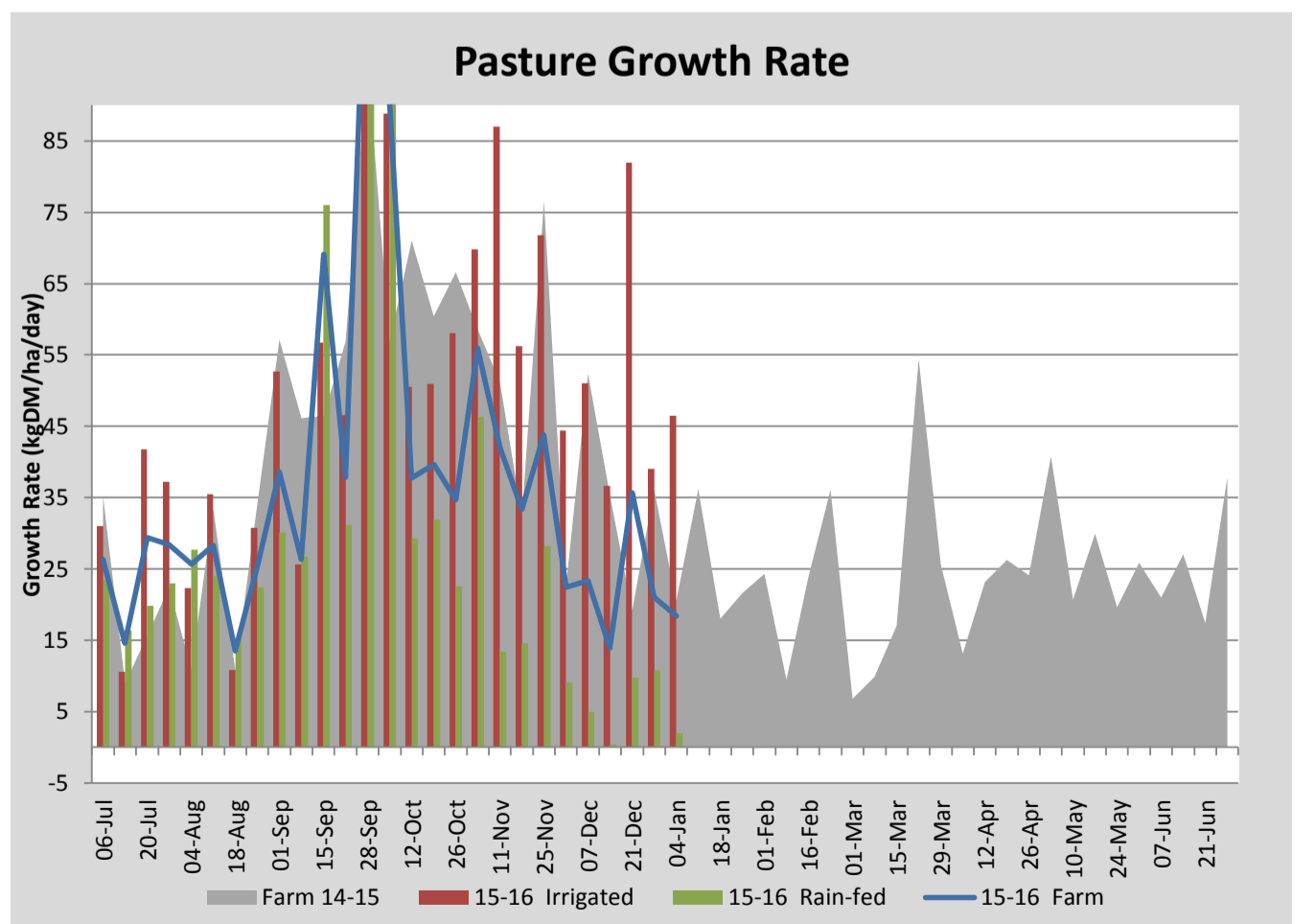
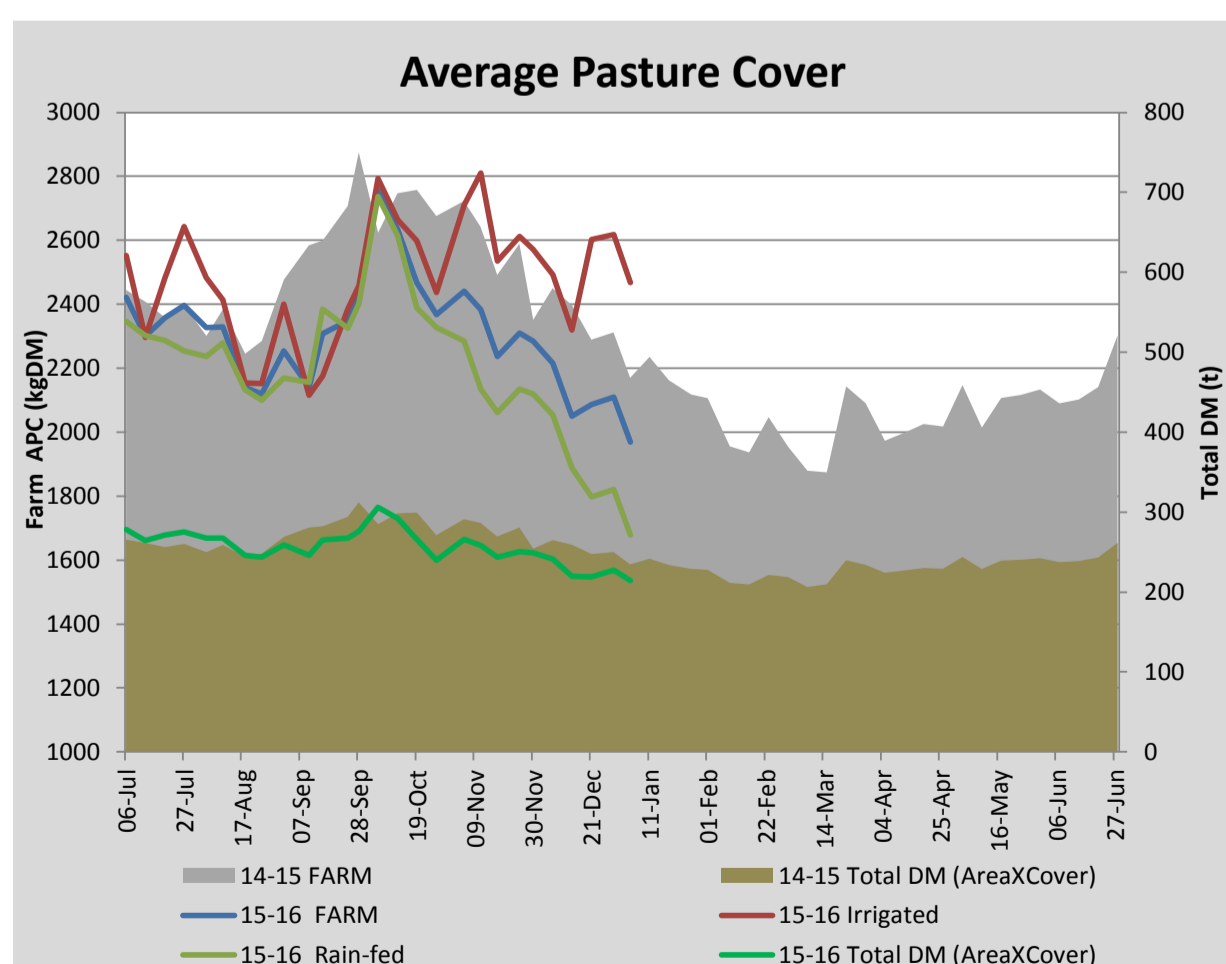
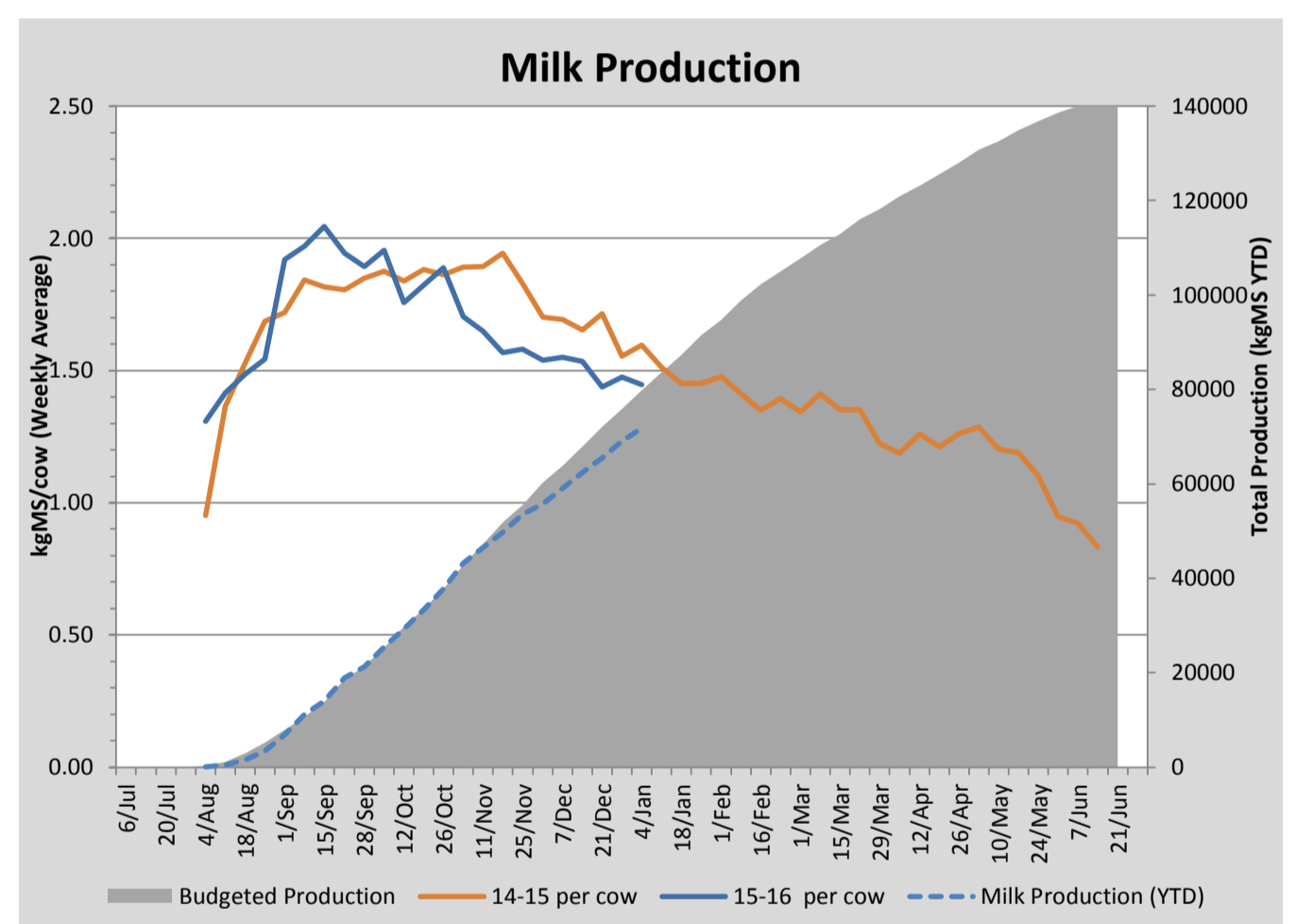
Key Summary Points

- 1 Average pasture cover has dropped below 2000 kg DM/ha and grazing residuals have decreased to just below 1400 kg DM/ha.
- 2 Pasture growth rates on the irrigated pasture are holding but dryland pasture growth rates have declined to almost zero.
- 3 Grazed pasja and forage rape has been oversown with annual ryegrass and is being irrigated to provide feed once remaining turnips are finished.

PASTURE INFORMATION	Farm			Irrigated			Rain-fed		
	Last Week	This Week	Variation	Last Week	This Week	Variation	Last Week	This Week	Variation
Grazed milking area (ha)	107.9	109.1	1.1	42.2	40.1	-2.1	66.9	68.9	2
Rotation Length (days)	67	125	58	48	57	10	88	406	317
Grazing allocation per day (ha)	1.6	0.9	-0.7	0.8	0.7	-0.1	0.8	0.2	-0.6
Average time since last grazed (days)	57	59	2	35	35	0	70	73	3
Leaf appearance rate (days per leaf)	16	16	-0	12	12	0	18	18	0
Average Pasture Cover (kgDM/ha)	2109	1969	-140	2619	2468	-151	1820	1678	-142
Pasture Growth Rate (kgDM/ha/day)	21	18	-3	39	46	7	11	2	-9
Post Grazing Biomass (kgDM/ha)	1470	1370	-100						
Nitrogen applied YTD (kgN/ha)	61	61	0	0	0	0	0	0	0

*Please note all pasture calculations detailed above are based on the current Grazed Milking Area

MILK PRODUCTION	Last Week	This Week	Variation
Average No. cows in milk (vat)	303	304	1
Litres per cow	19.3	19.1	-0.2
% Fat	4.26	4.26	0.00
% Protein	3.37	3.34	-0.03
MS/cow/day	1.48	1.45	-0.03
MS/ha/day	3.96	3.89	-0.06
BMCC	113,571	127,857	14,286
Average Liveweight (kg)	481	479	-2
	Budget	To Date	Variation
Total Milk Production (kgMS)	79,817	71,726	90%
MS/ha YTD	700	676	-24



4 January 2016

