

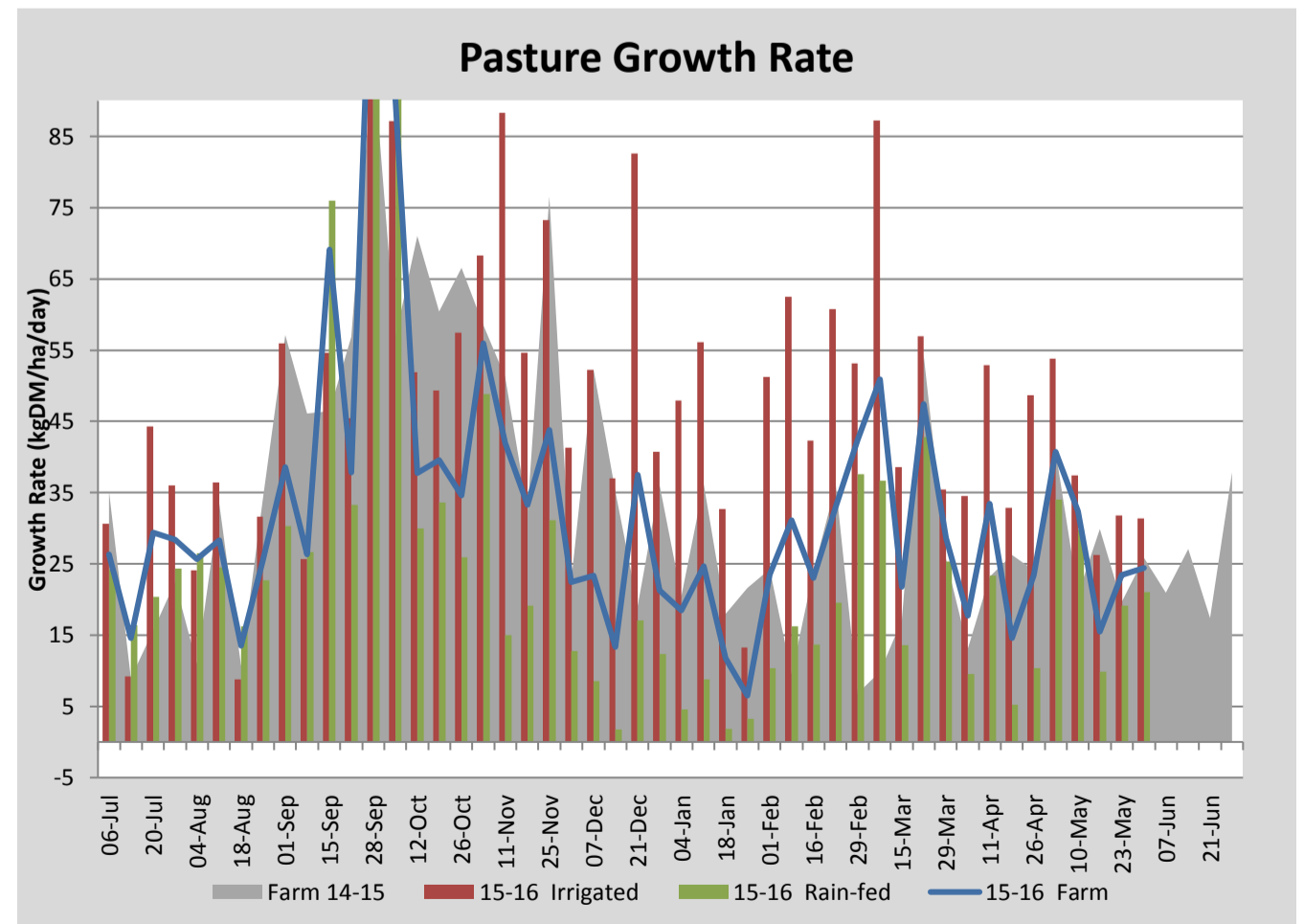
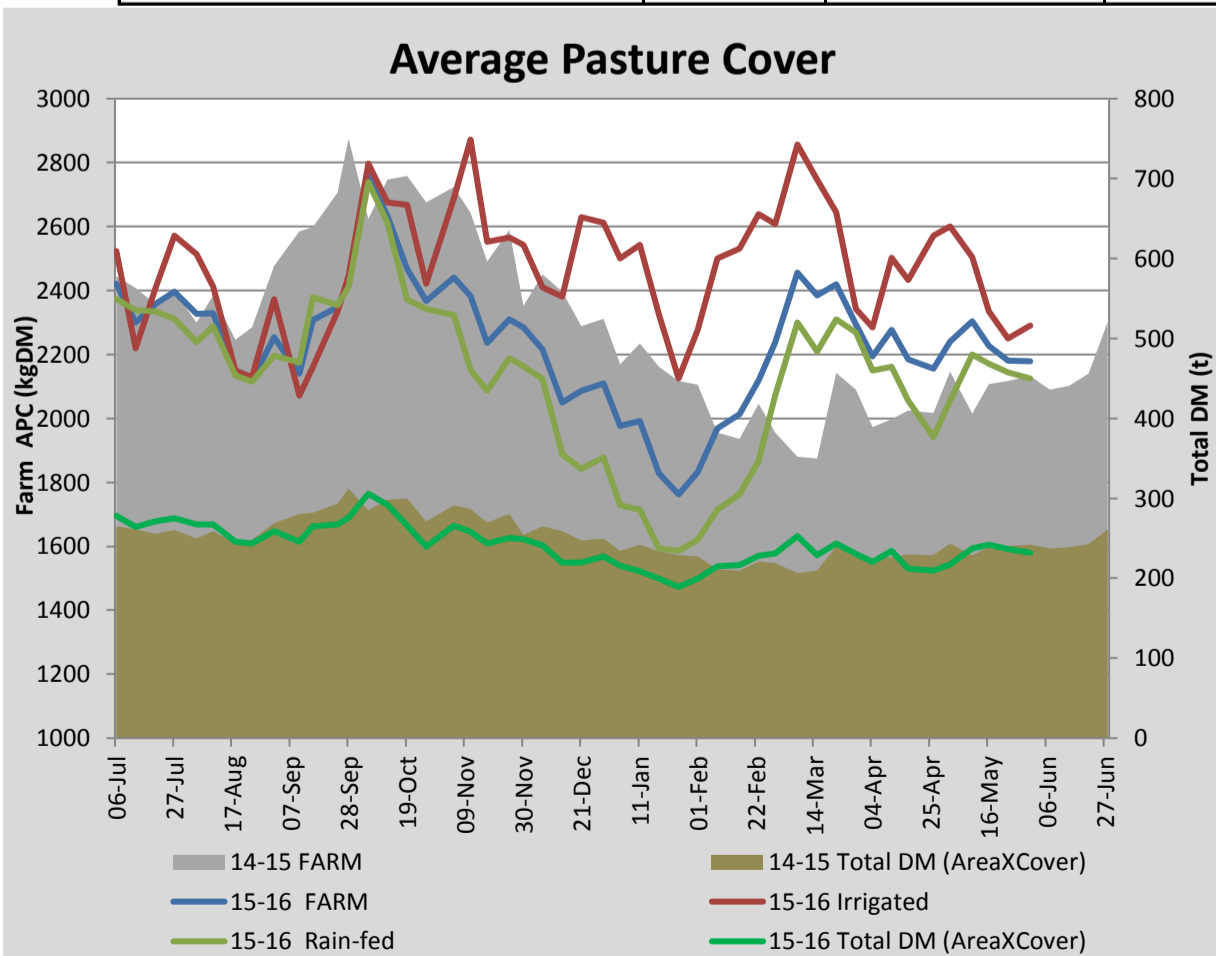
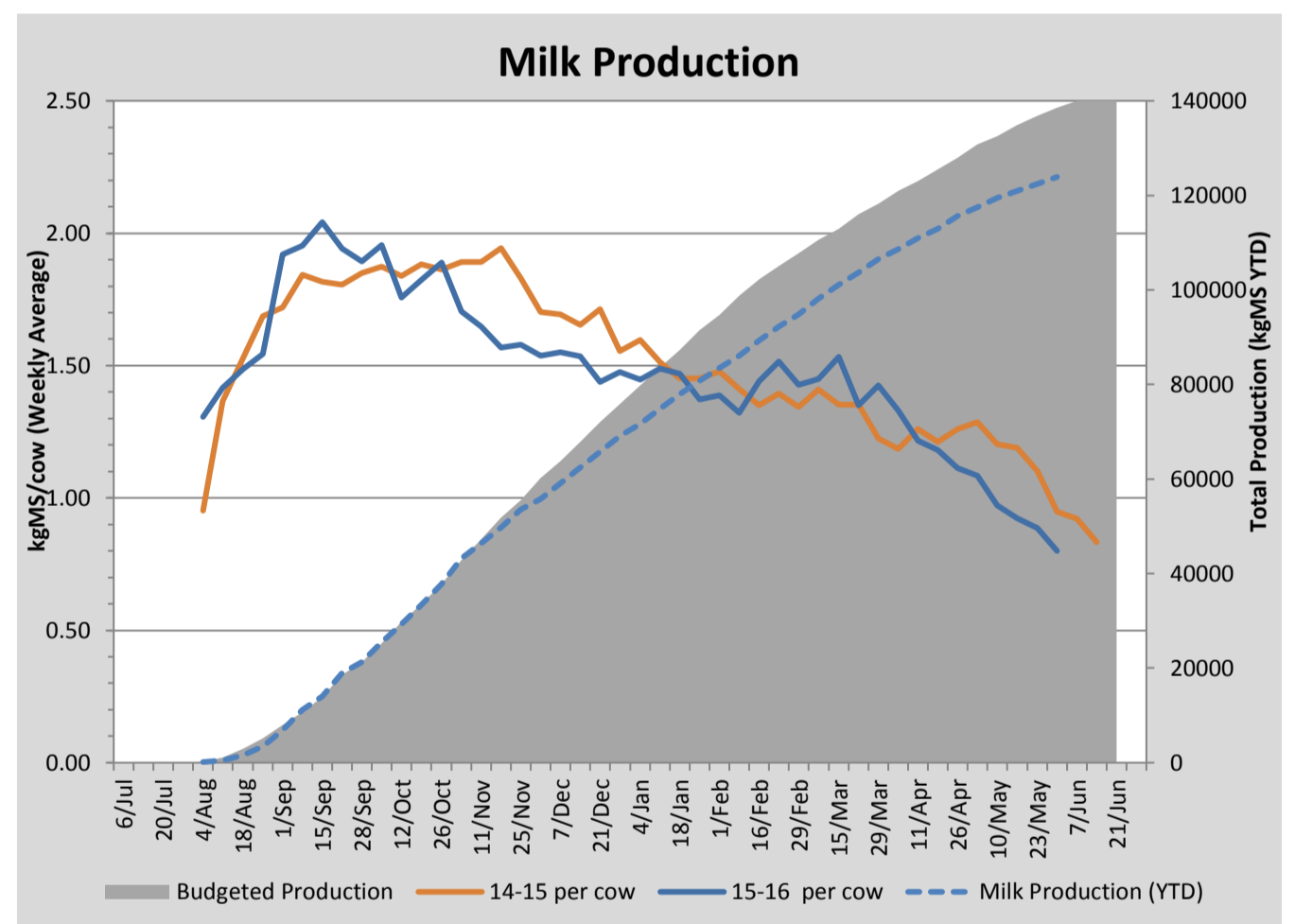
## Key Summary Points

- 1** With average cow production falling below 8 litres per day, all cows will be dried off over the next week.
- 2** Dry cows will be moved to the run-off area of the facility and receive a diet of forage rape, straw and some pasture.
- 3** R2's will move from the run-off area to the milking platform and will be fed grass (they will maintain a slower grazing rotation on the platform) and some concentrates at the dairy to familiarise them to the dairy.

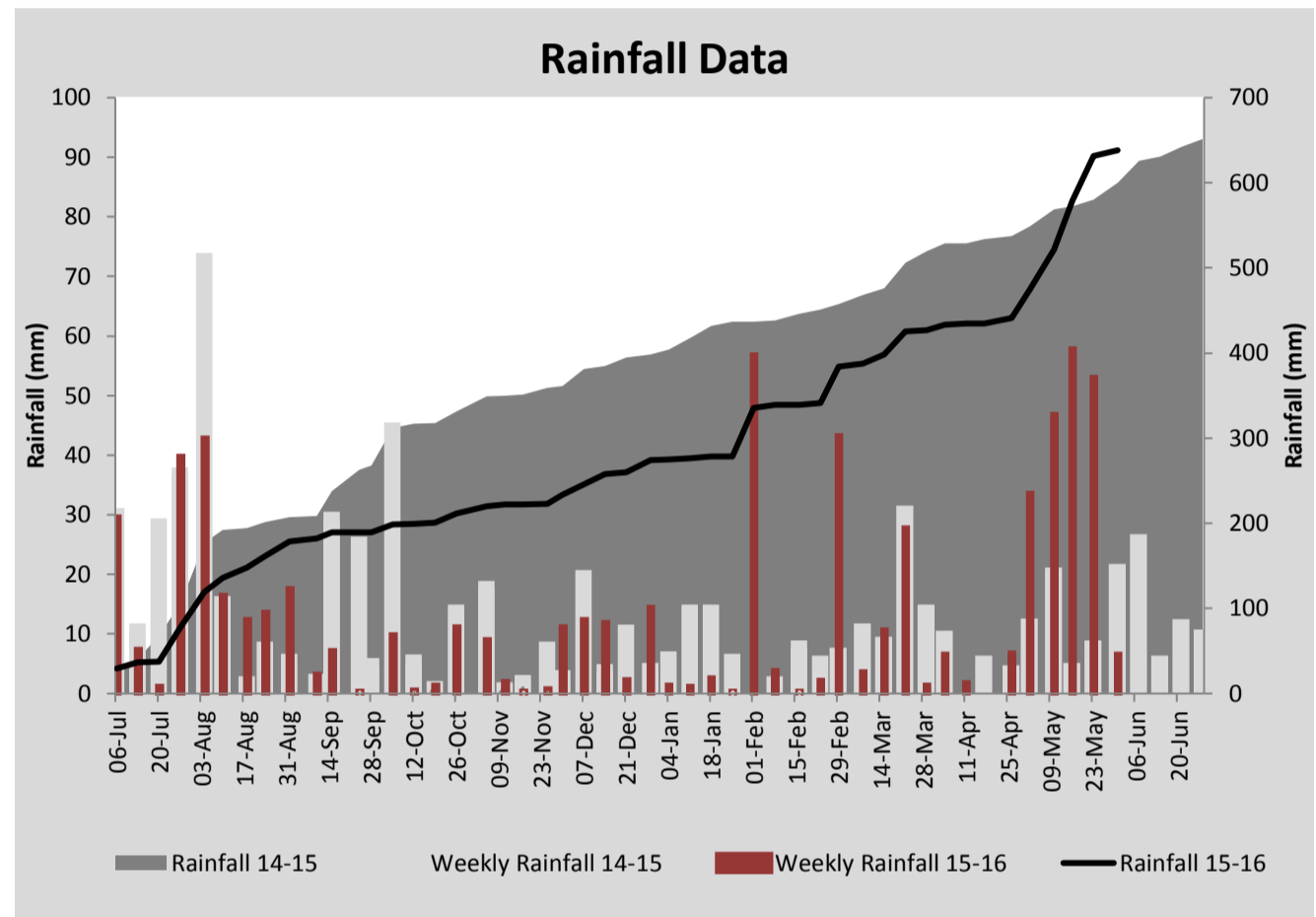
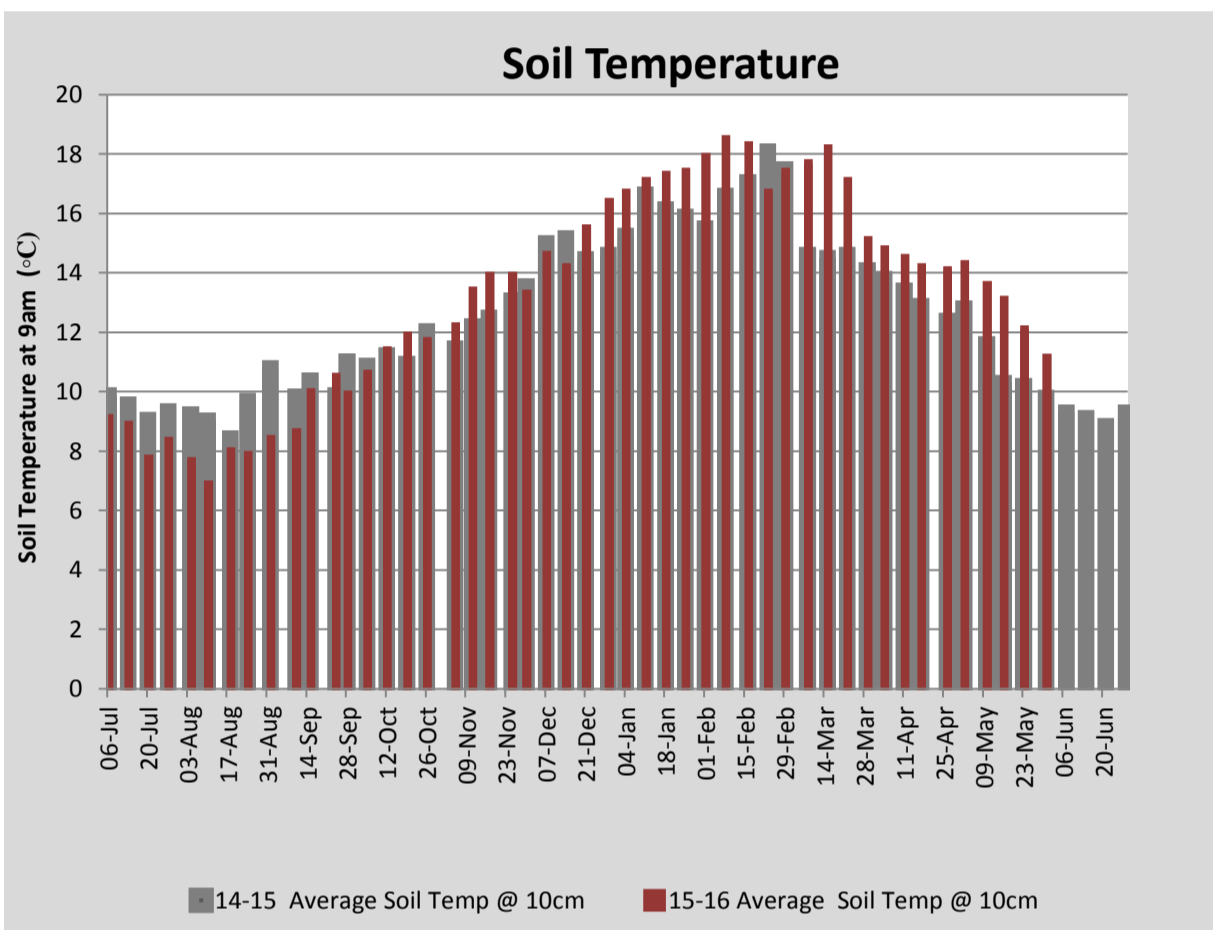
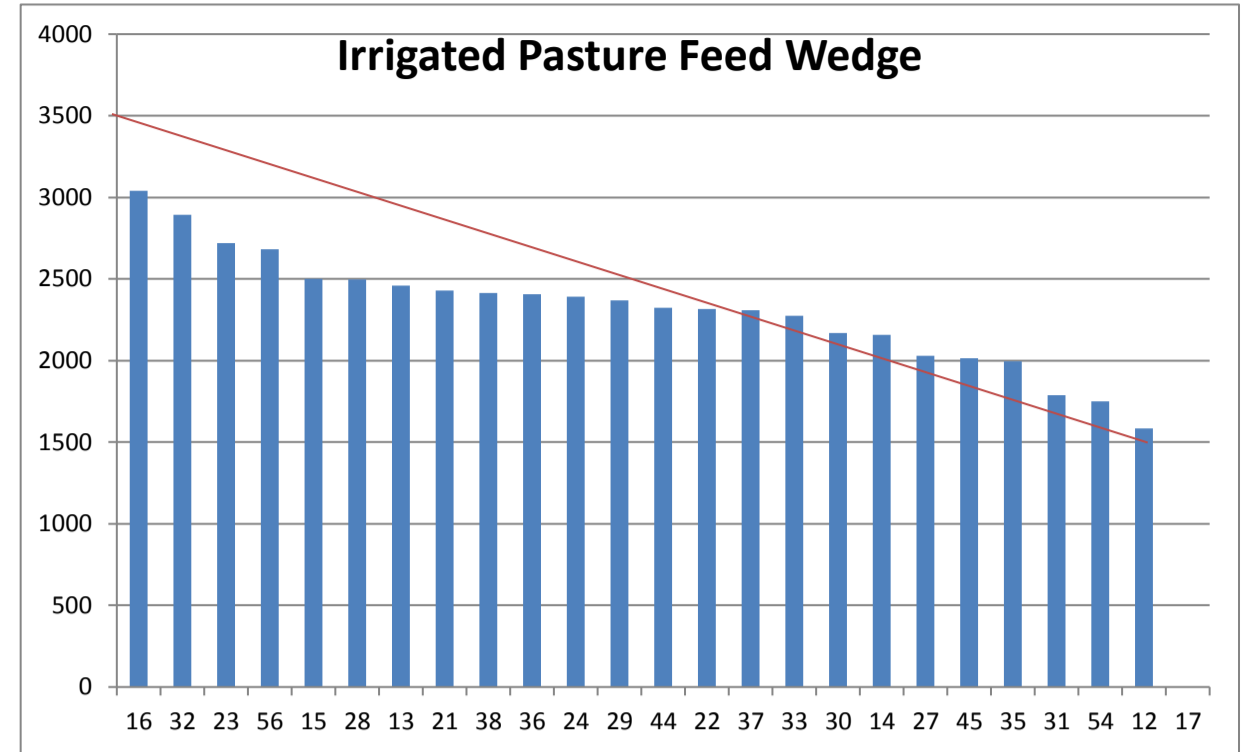
| PASTURE INFORMATION                   | Farm      |           |           | Irrigated |           |           | Rain-fed  |           |           |
|---------------------------------------|-----------|-----------|-----------|-----------|-----------|-----------|-----------|-----------|-----------|
|                                       | Last Week | This Week | Variation | Last Week | This Week | Variation | Last Week | This Week | Variation |
| Grazed milking area (ha)              | 108.6     | 106.5     | -2.1      | 37.2      | 35.0      | -2.1      | 69.3      | 71.5      | 2         |
| Rotation Length (days)                | 43        | 41        | -3        | 31        | 19        | -12       | 55        | 98        | 42        |
| Grazing allocation per day (ha)       | 2.5       | 2.6       | 0.1       | 1.2       | 1.9       | 0.7       | 1.3       | 0.7       | -0.6      |
| Average time since last grazed (days) | 39        | 42        | 3         | 32        | 40        | 8         | 42        | 43        | 1         |
| Leaf appearance rate (days per leaf)  | 17        | 17        | 0         | 17        | 17        | 0         | 17        | 17        | 0         |
| Average Pasture Cover (kgDM/ha)       | 2180      | 2179      | -1        | 2250      | 2291      | 40        | 2143      | 2124      | -19       |
| Pasture Growth Rate (kgDM/ha/day)     | 23        | 24        | 1         | 32        | 31        | -0        | 19        | 21        | 2         |
| Post Grazing Biomass (kgDM/ha)        | 1580      | 1500      | -80       |           |           |           |           |           |           |
| Nitrogen applied YTD (kgN/ha)         | 90        | 90        | 0         | 0         | 0         | 0         | 0         | 0         | 0         |

\*Please note all pasture calculations detailed above are based on the current Grazed Milking Area

| MILK PRODUCTION                | Last Week | This Week | Variation |
|--------------------------------|-----------|-----------|-----------|
| Average No. cows in milk (vat) | 245       | 231       | -14       |
| Litres per cow                 | 8.5       | 7.6       | -0.9      |
| % Fat                          | 5.90      | 5.85      | -0.05     |
| % Protein                      | 4.48      | 4.55      | 0.07      |
| MS/cow/day                     | 0.89      | 0.80      | -0.09     |
| MS/ha/day                      | 1.92      | 1.76      | -0.16     |
| BMCC                           | 213,429   | 264,571   | 51,143    |
| Average Liveweight (kg)        | 510       | 510       | 0         |
|                                | Budget    | To Date   | Variation |
| Total Milk Production (kgMS)   | 138,607   | 123,898   | 89%       |
| MS/ha YTD                      | 1216      | 1117      | -98       |



| Last 7 days    |           |              |              |               |          |
|----------------|-----------|--------------|--------------|---------------|----------|
| Milkers Diet   | kg DM     | MJ ME        | CP (%)       | NDF (%)       | \$/cow   |
| Pasture Intake | 11.7      | 12.0         | 19.0         | 48.0          | 0.0      |
| Concentrates   | 4.3       | 12.9         | 15.6         | 20.3          | 0.0      |
| Silage         | 2.0       | 10.0         | 0.0          | 0.0           | 0.0      |
| Grazed forage  | 0.0       | 0.0          | 0.0          | 0.0           | 0.0      |
| Other feeds    | 0.0       | 0.0          | 0.0          | 0.0           | 0.0      |
| <b>Total</b>   | <b>18</b> | <b>215.8</b> | <b>16.0</b>  | <b>35.9</b>   | <b>0</b> |
| <b>Target</b>  |           | <b>191</b>   | <b>16-18</b> | <b>&gt;33</b> | <b>0</b> |



| Analysis                                       |    |                           |         |
|--|----|---------------------------|---------|
| Expected growth rate next 7 days (kgDM/ha/day) | 20 | Target Leaf Grazing Stage | 2.5-3.0 |
| Total Demand from Pasture (kgDM/ha/day)        | 27 | Predicted APC 7 days time | 2130    |
| APC balance (kgDM/ha/day)                      | -7 | Predicted APC Change      | -48.5   |

## Discussion

With heifers due to start calving by the 20th of July and cows due one week later, the decision was made to dry all cows off during next week. Any cow recording a cell count greater than 140,000 at any of the monthly tests or having had mastitis during the past lactation will be dry cow treated. Dry cows will be moved to the run-off area of the facility and will be placed on an initial diet of forage rape, straw and some pasture. When 3 weeks from calving they will return to the milking platform to commence a lead feeding program with a negative DCAD pellet. The rising 2-year-olds will move from the run-off area to the milking platform and be fed daily with a small amount of concentrate through the dairy to accustom them to the feel and sounds of the dairy prior to calving. The heifers will also maintain a slow grazing rotation on the milking platform to maintain pasture quality by preventing paddocks preventing paddocks growing too far past the 3-leaf-stage and/or canopy closure.

# 31 May 2016

