

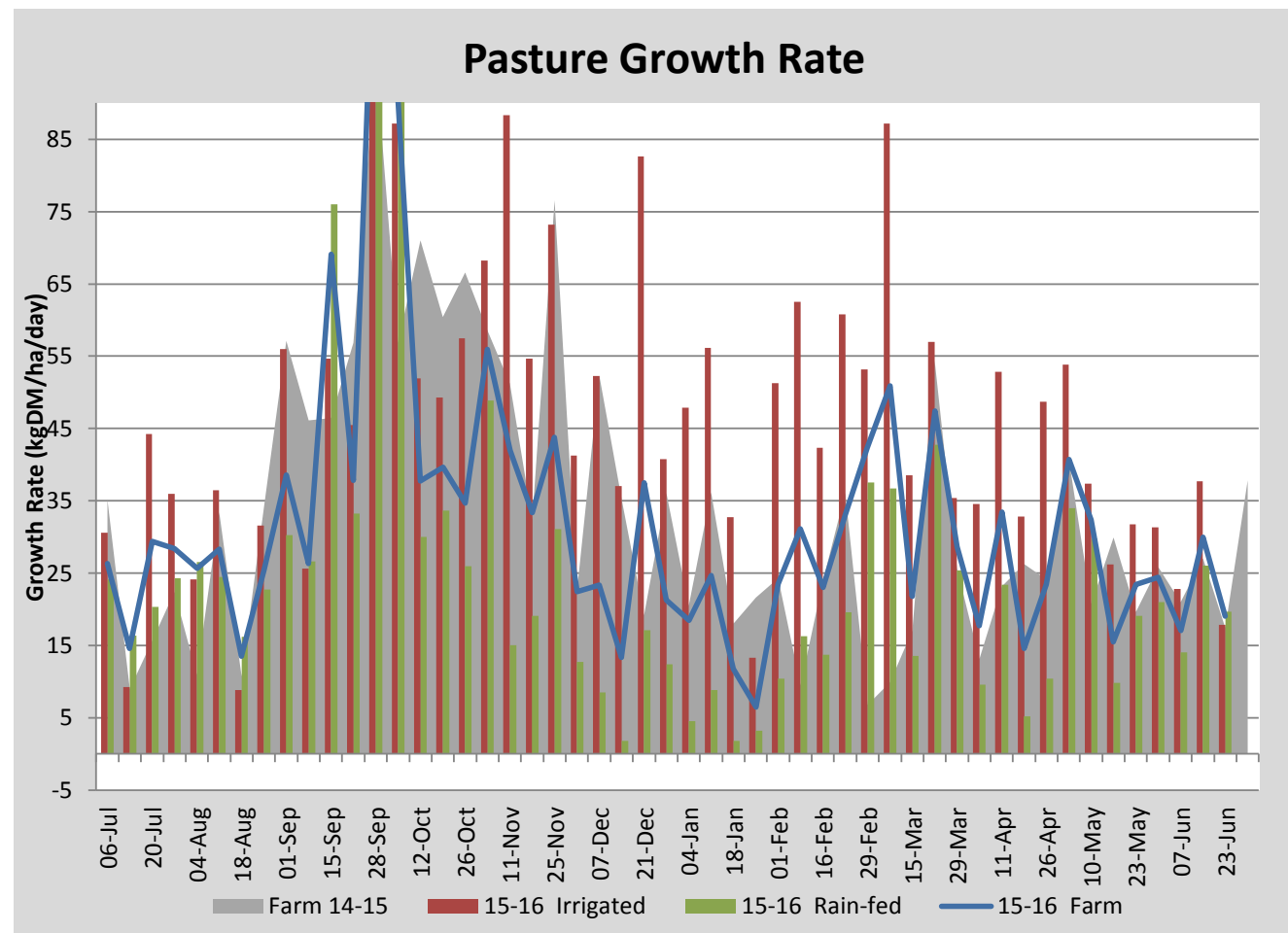
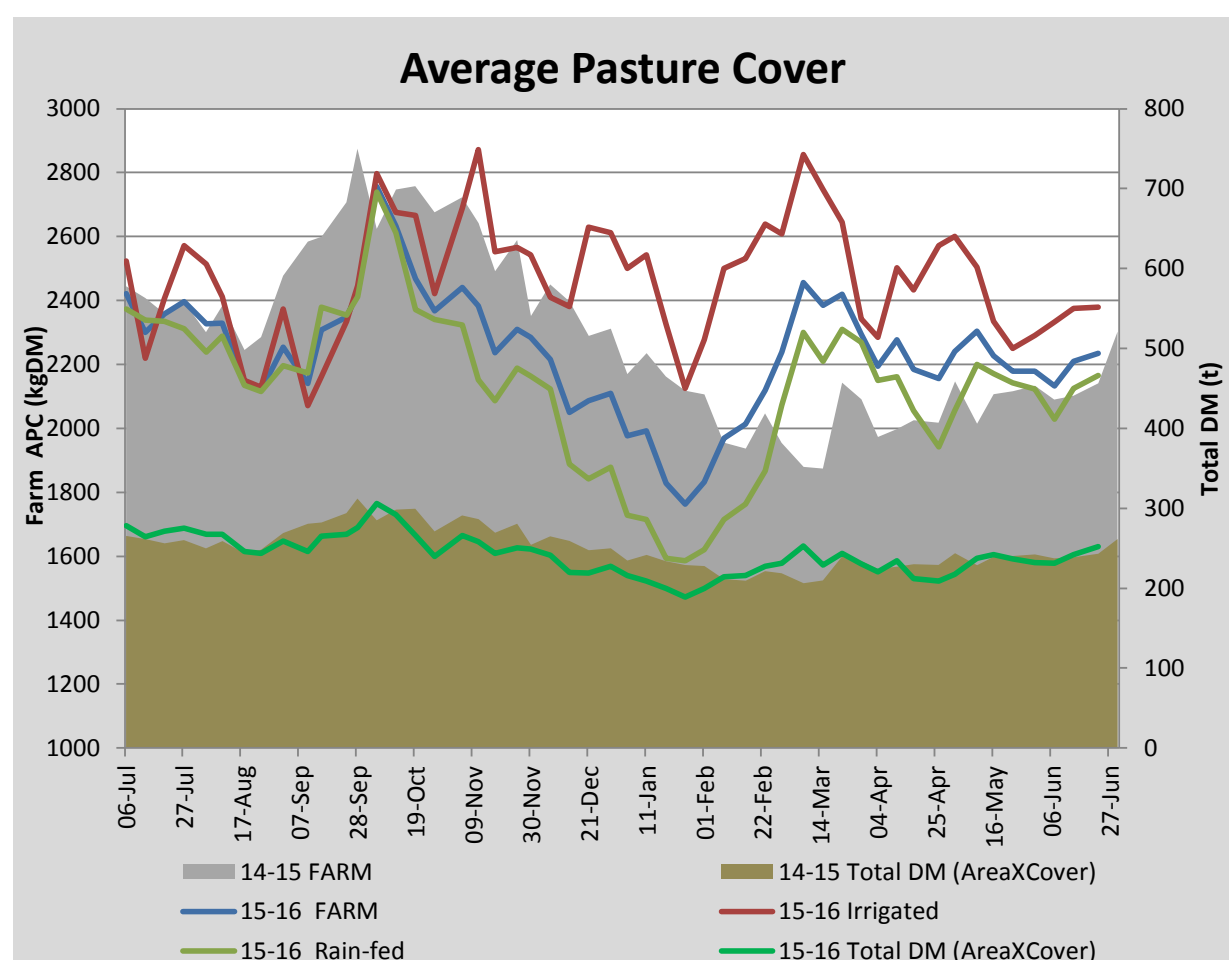
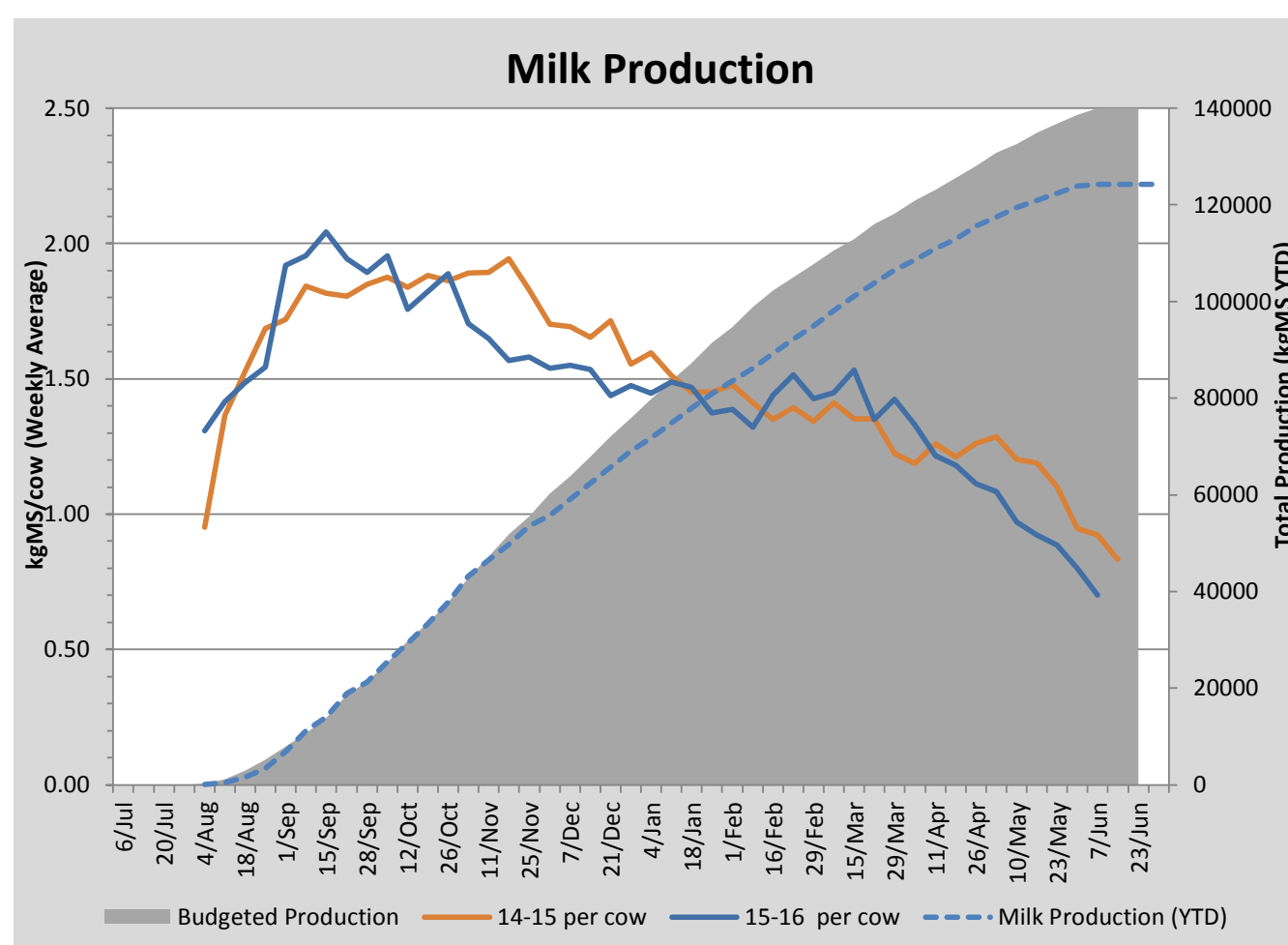
## Key Summary Points

- 1** Average pasture cover built slightly this week to 2236kgDM/ha
- 2** The grazed rape crop has been over sown with barley/annual ryegrass for spring grazing and silage production.
- 3** Focus for the coming week is to extend the rotation length across both the milking platform and run off to maintain and hopefully build cover.

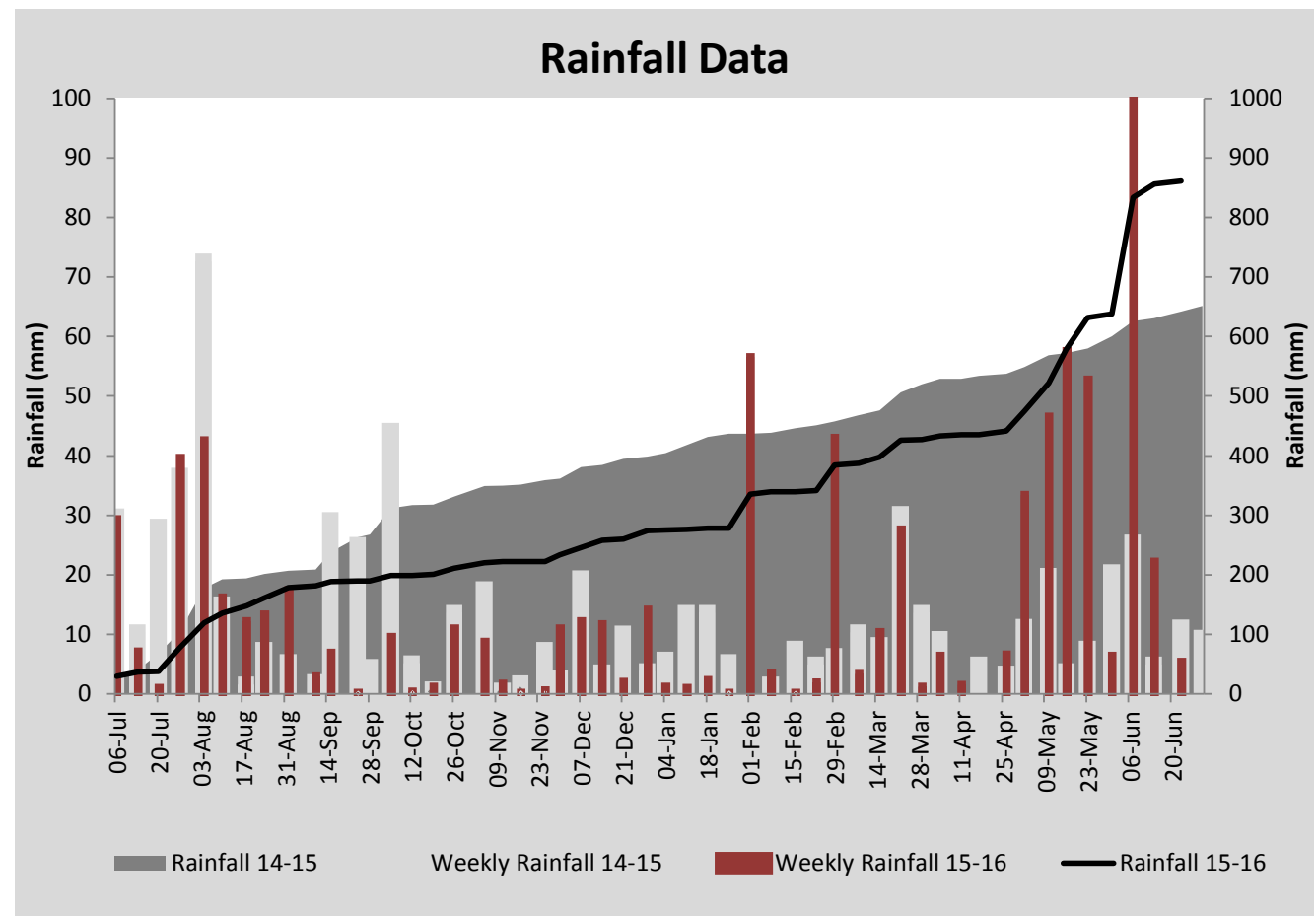
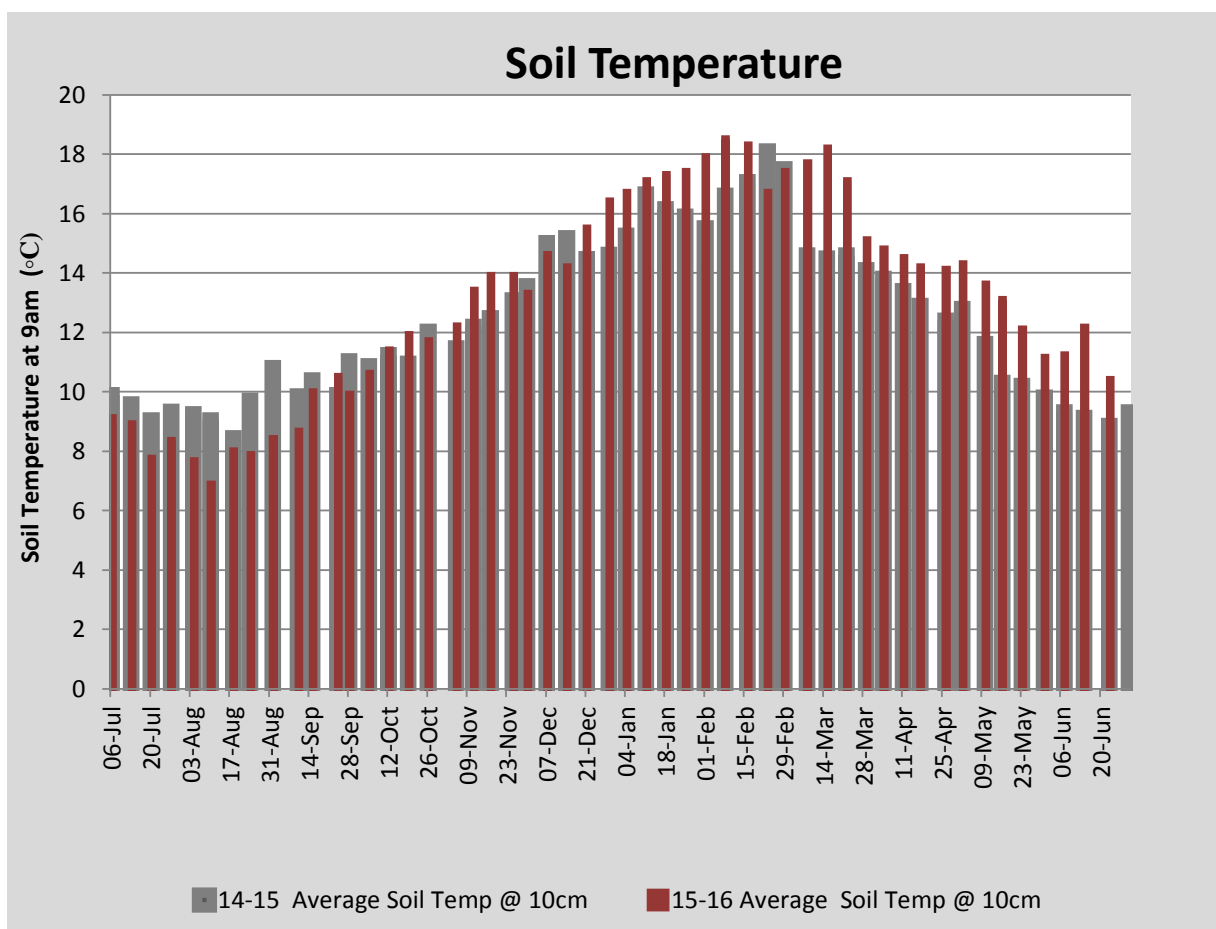
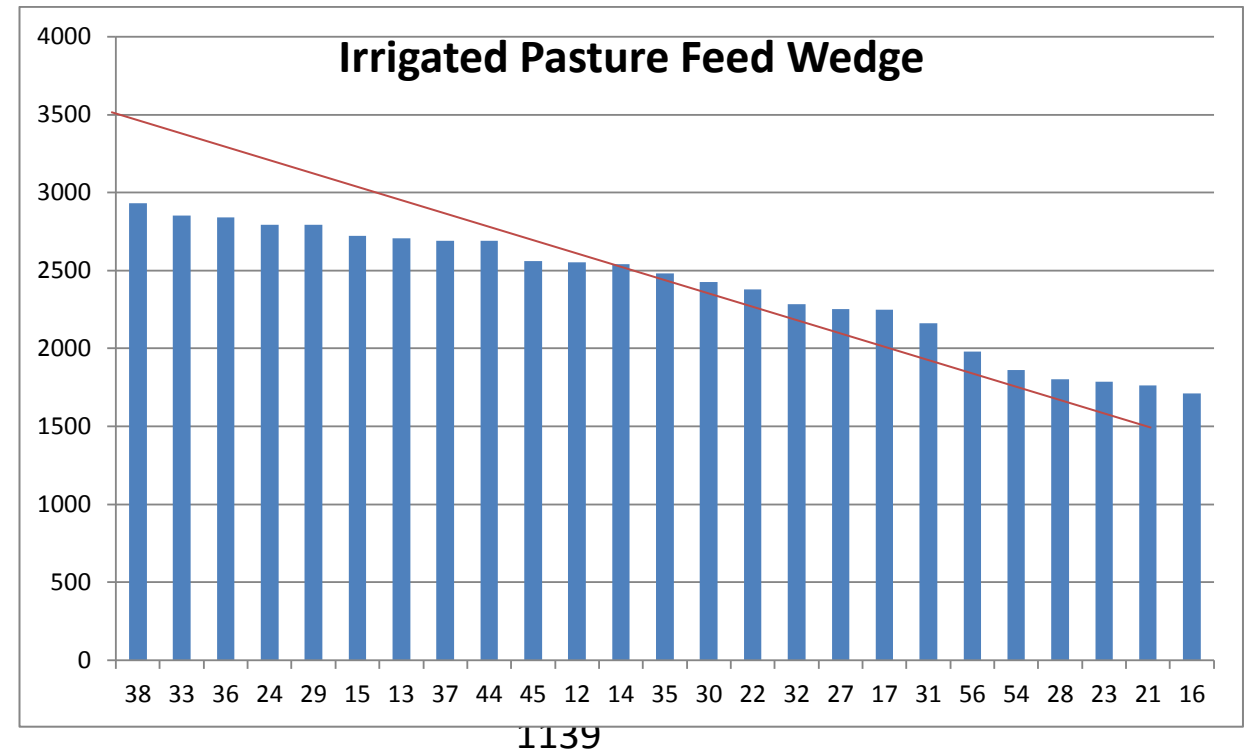
PASTURE INFORMATION	Farm			Irrigated			Rain-fed		
	Last Week	This Week	Variation	Last Week	This Week	Variation	Last Week	This Week	Variation
Grazed milking area (ha)	109.6	112.6	3.0	37.2	37.2	0.0	75.4	75.4	0
Rotation Length (days)	119	212	93	40	0	-40	0	142	142
Grazing allocation per day (ha)	0.9	0.5	-0.4	0.9	0.0	-0.9	0.0	0.5	0.5
Average time since last grazed (days)	45	49	4	34	39	5	51	54	3
Leaf appearance rate (days per leaf)	17	17	0	17	17	0	17	17	0
Average Pasture Cover (kgDM/ha)	2209	2236	26	2376	2378	3	2124	2165	41
Pasture Growth Rate (kgDM/ha/day)	30	19	-11	38	18	-20	26	20	-6
Post Grazing Biomass (kgDM/ha)	1550	1600	50						
Nitrogen applied YTD (kgN/ha)	107	107	0	0	0	0	0	0	0

\*Please note all pasture calculations detailed above are based on the current Grazed Milking Area

MILK PRODUCTION	Last Week	This Week	Variation
Average No. cows in milk (vat)	0	0	0
Litres per cow	#N/A	#N/A	#N/A
% Fat	#N/A	#N/A	#N/A
% Protein	#N/A	#N/A	#N/A
MS/cow/day	#N/A	#N/A	#N/A
MS/ha/day	#N/A	#N/A	#N/A
BMCC			#VALUE!
Average Liveweight (kg)			#VALUE!
	Budget	To Date	Variation
Total Milk Production (kgMS)	140,000	124,196	89%
MS/ha YTD	1228	1139	-89



Last 7 days					
Milkers Diet	kg DM	MJ ME	CP (%)	NDF (%)	\$/cow
Pasture Intake	10.0	12.0	19.0	48.0	0.0
Concentrates	0.0	0.0	0.0	0.0	0.0
Silage	0.0	0.0	0.0	0.0	0.0
Grazed forage	0.0	0.0	0.0	0.0	0.0
Other feeds	0.0	0.0	0.0	0.0	0.0
<b>Total</b>	<b>10</b>	<b>120</b>	<b>19.0</b>	<b>48.0</b>	<b>0</b>
<b>Target</b>		<b>90</b>	<b>16-18</b>	<b>&gt;33</b>	<b>0</b>



Analysis			
Expected growth rate next 7 days (kgDM/ha/day)	25	Target Leaf Grazing Stage	2.5-3.0
Total Demand from Pasture (kgDM/ha/day)	10	Predicted APC 7 days time	2341
APC balance (kgDM/ha/day)	15	Predicted APC Change	105.0

## Discussion

Average pasture cover has built slightly this week to 2236kgDM/ha, however growth remains slow, averaging 19kgDM/ha/day. Pastures across the farm are looking nitrogen deficient with urine patches becoming obvious in some paddocks. We will look to apply a urea/sulphate of ammonia blend on all paddocks below 2200kgDM/ha cover as soon as there is a break in the weather. We will be extending the rotation length across the platform this coming week to maintain and build cover. This will be achieved by sending 46 steers off farm on agistment until the end of August. Higher covers coming into calving this year will be particularly important as we have no silage reserves to fill any feed deficits. A barley and annual ryegrass mix was direct drilled into the grazed rape crop (3.3ha) this week. This will be grazed then cut for silage in spring. Dry cows are currently allocated 8kgDM/cow/day forage rape along with 4kg barley straw. The crop is being on/off grazed and back fenced so as to reduce soil damage in wet conditions. This should allow us to drill these paddocks sooner once the weather improves.

# 23 June 2016

