

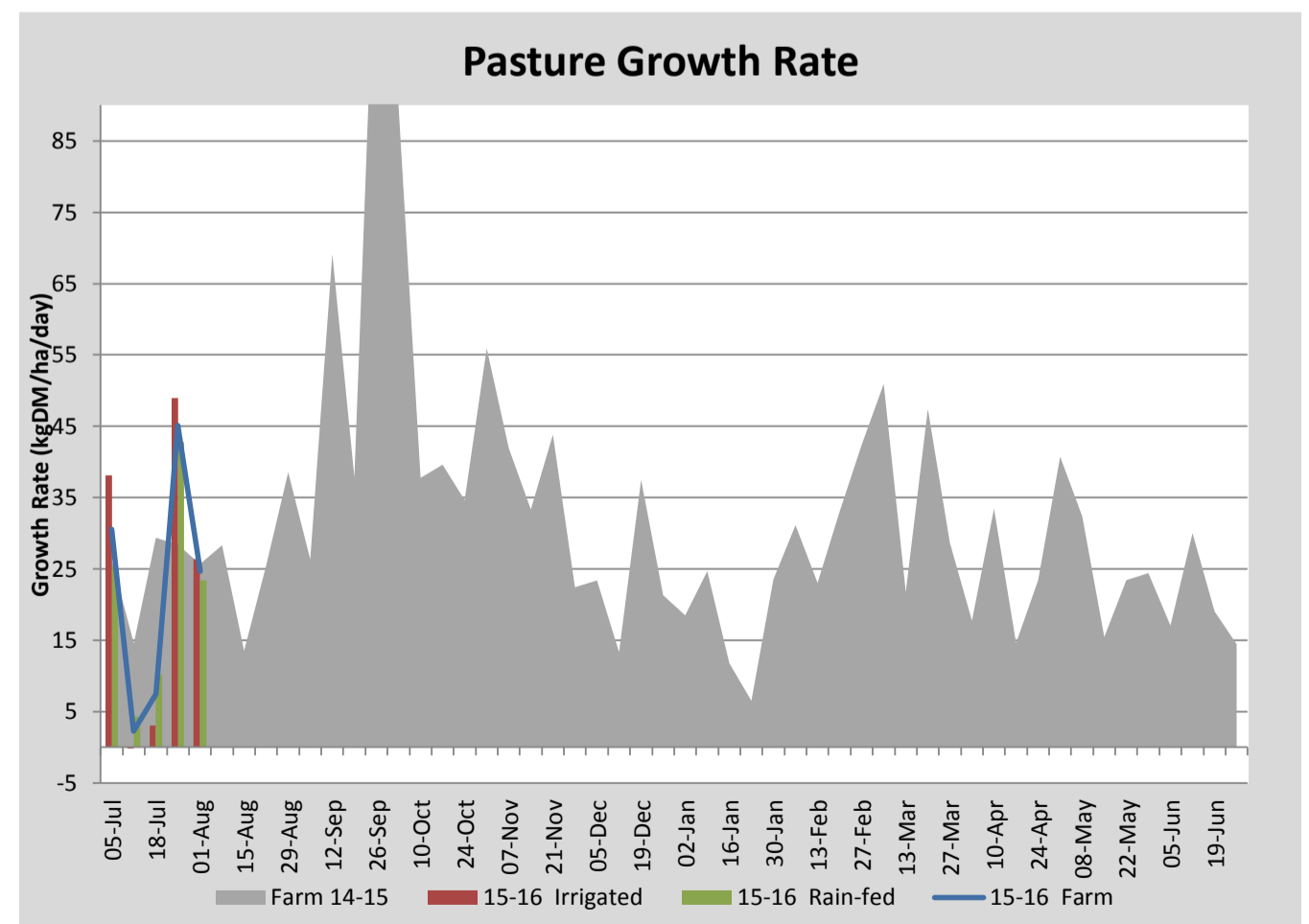
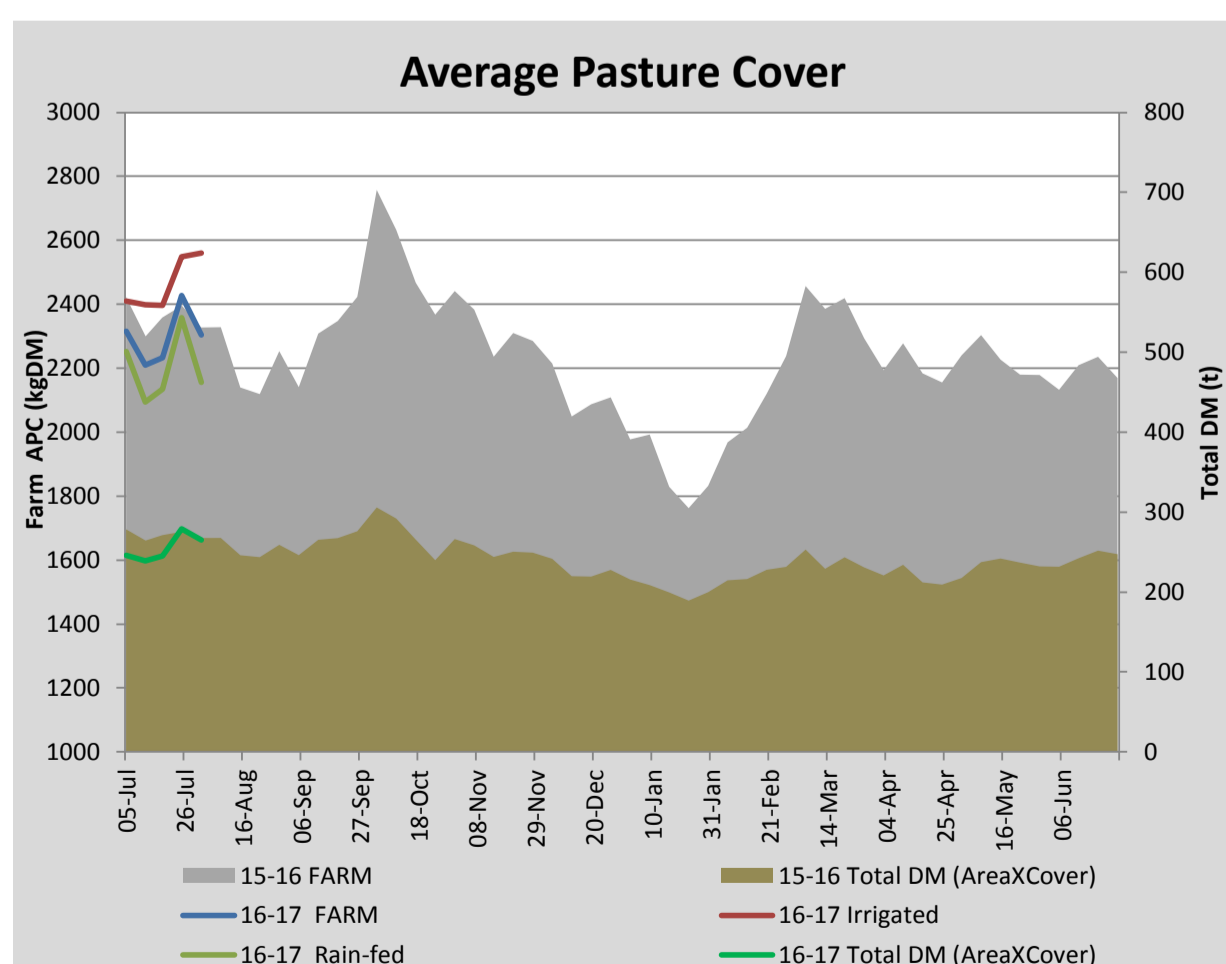
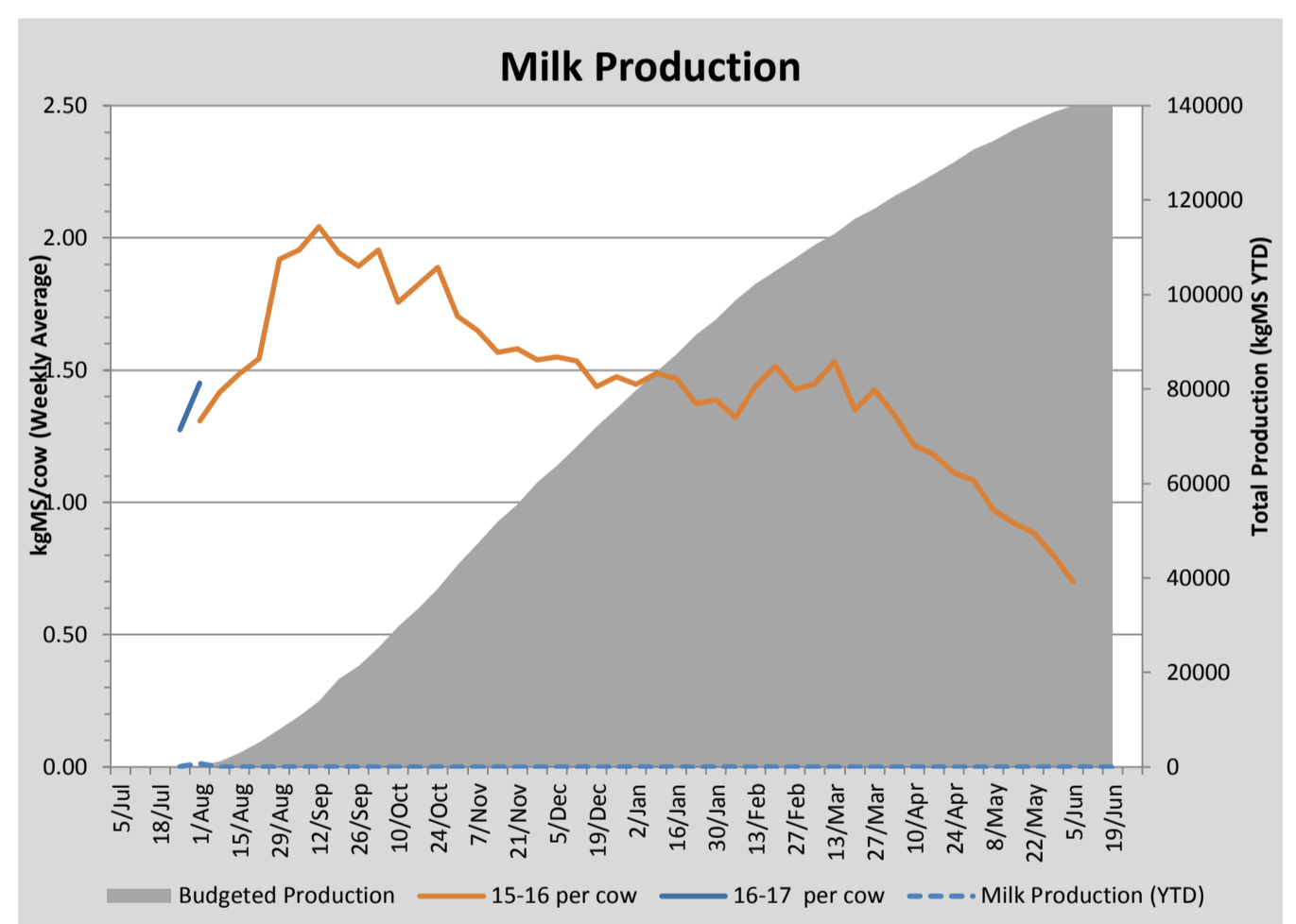
## Key Summary Points

- 1** Average pasture cover decreased slightly this week with demand increasing on the milking platform and lower pasture growth rates.
- 2** Calving is progressing well with 136 cows in as of the end of this week.
- 3** The focus for the coming week is to apply nitrogen to all grazed paddocks across the runoff and milking platform and to continue to monitor mastitis in the herd.

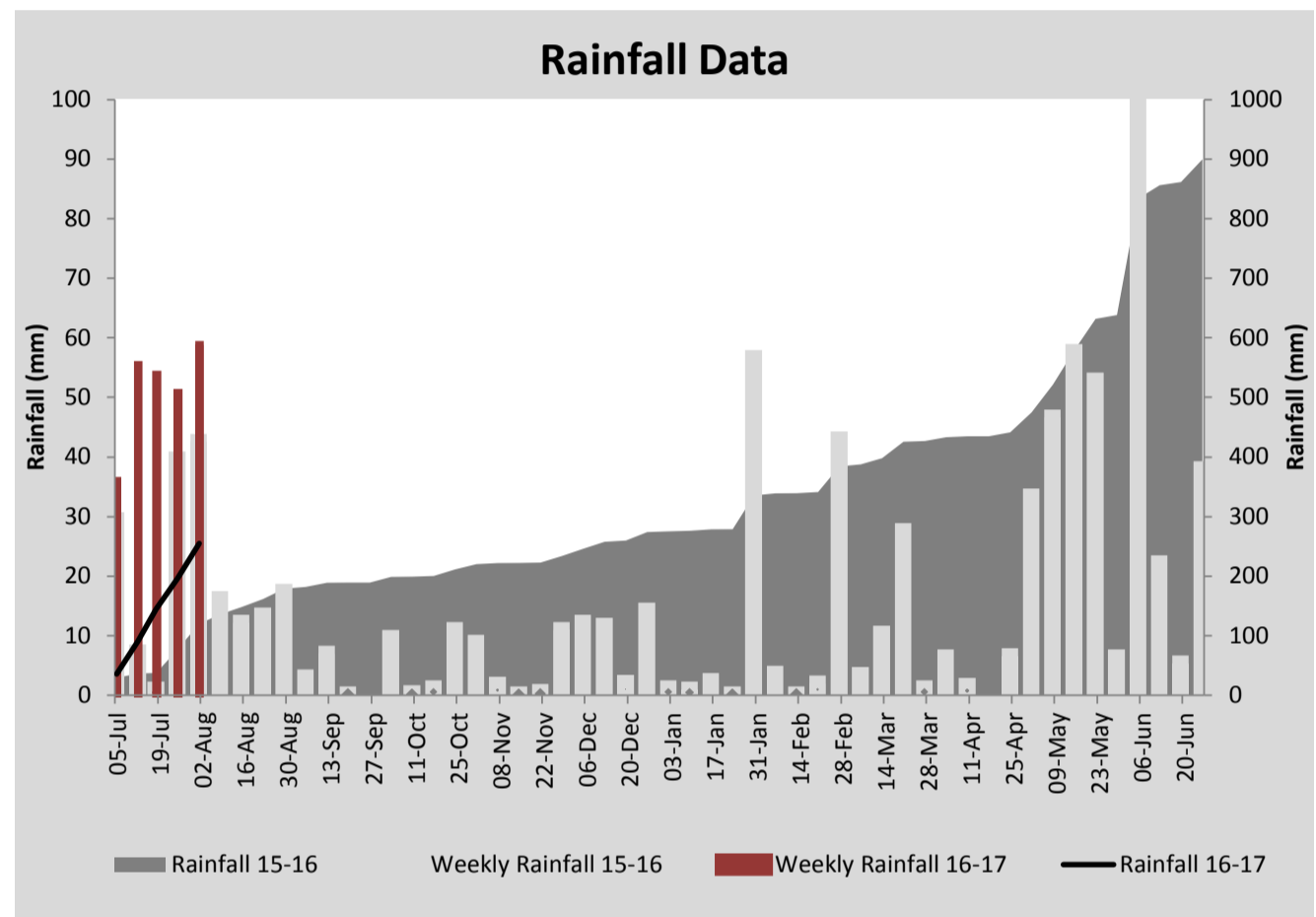
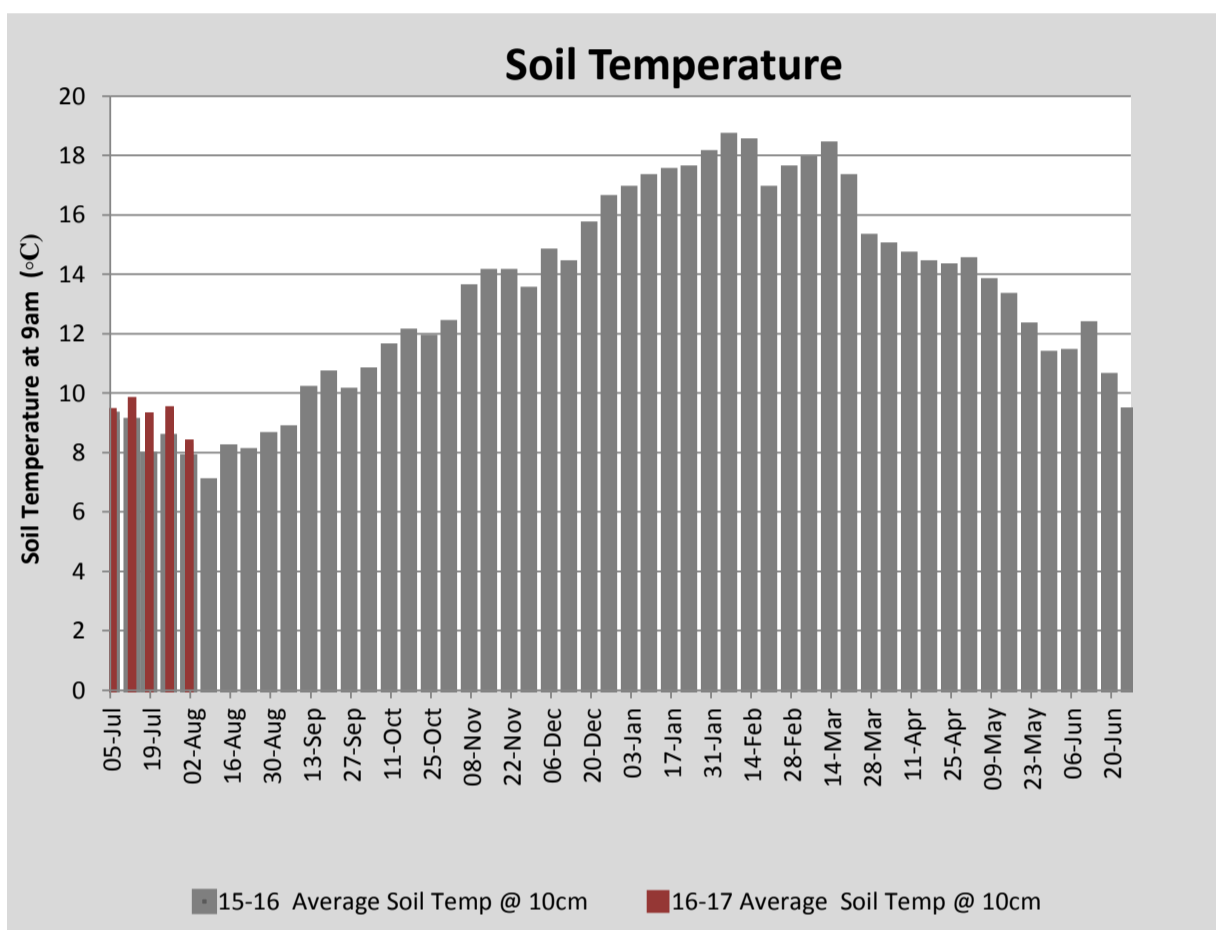
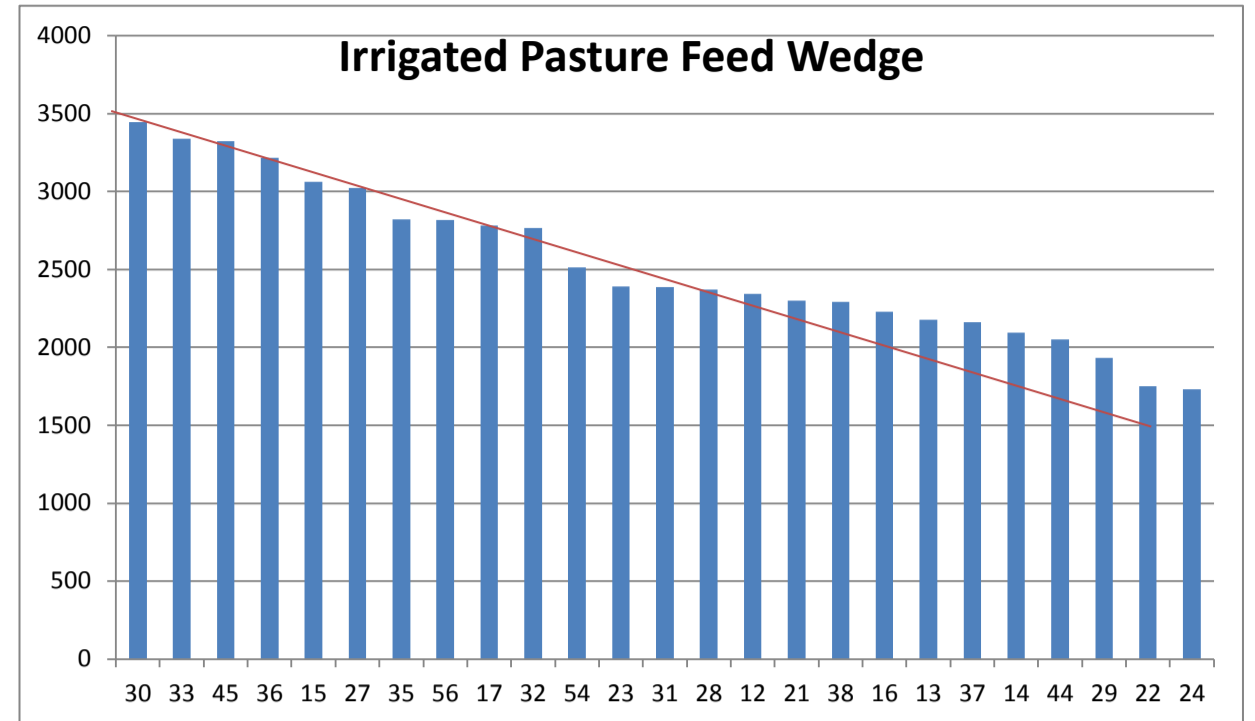
PASTURE INFORMATION	Farm			Irrigated			Rain-fed		
	Last Week	This Week	Variation	Last Week	This Week	Variation	Last Week	This Week	Variation
Grazed milking area (ha)	115.0	115.0	0.0	42.2	42.2	0.0	72.8	72.8	0
Rotation Length (days)	67	65	-2	44	43	-2	95	95	0
Grazing allocation per day (ha)	1.7	1.8	0.0	1.0	1.0	0.0	0.8	0.8	0.0
Average time since last grazed (days)	77	77	0	76	76	0	78	78	0
Leaf appearance rate (days per leaf)	20	20	0	20	20	0	20	20	0
Average Pasture Cover (kgDM/ha)	2428	2304	-124	2548	2560	12	2359	2155	-203
Pasture Growth Rate (kgDM/ha/day)	45	25	-20	49	26	-23	43	23	-19
Post Grazing Biomass (kgDM/ha)	1400	1450	50						
Nitrogen applied YTD (kgN/ha)	0	0	0	0	0	0	0	0	0

\*Please note all pasture calculations detailed above are based on the current Grazed Milking Area

MILK PRODUCTION	Last Week	This Week	Variation
Average No. cows in milk (vat)	55	75	20
Litres per cow	14.4	17.0	2.7
% Fat	4.91	4.84	-0.07
% Protein	3.96	3.65	-0.31
MS/cow/day	1.28	1.45	0.18
MS/ha/day	0.62	0.96	0.34
BMCC	757,333	267,714	-489,619
Average Liveweight (kg)	0	0	0
	Budget	To Date	Variation
Total Milk Production (kgMS)	258	667	259%
MS/ha YTD	2	8	372%



Last 7 days					
Milkers Diet	kg DM	MJ ME	CP (%)	NDF (%)	\$/cow
Pasture Intake	16.0	0.0	0.0	0.0	0.0
Concentrates	3.0	12.9	15.6	20.3	0.0
Silage	0.0	0.0	0.0	0.0	0.0
Grazed forage	0.0	0.0	0.0	0.0	0.0
Other feeds	0.0	0.0	0.0	0.0	0.0
<b>Total</b>	<b>19</b>	<b>38.7</b>	<b>2.5</b>	<b>3.2</b>	<b>0</b>
<b>Target</b>		<b>90</b>	<b>16-18</b>	<b>&gt;33</b>	<b>0</b>



Analysis			
Expected growth rate next 7 days (kgDM/ha/day)	25	Target Leaf Grazing Stage	2.5-3.0
Total Demand from Pasture (kgDM/ha/day)	33	Predicted APC 7 days time	2248
APC balance (kgDM/ha/day)	-8	Predicted APC Change	-56.2

## Discussion

Average pasture cover decreased this week to 2304kgDM/ha with demand increasing on the milking platform (currently 260 cows on the platform) and decreasing soil temperature (8.3°C). Milkers are being allocated 17kg DM/cow/day. Concentrate in the ration will be increased to 4kg/cow/day this coming week to reduce pasture demand. With silage in short supply we will be monitoring average cover closely over the next few weeks and will consider increasing the concentrate in the ration if a feed deficit continues to develop. Calving is progressing well with 136 cows in to date. SSC continues to improve this week with improving weather and paddock conditions. The focus for the coming week is to apply nitrogen to all grazed paddocks across the milking platform and runoff. We will be using a nitrogen/sulfur blend at 40kg nitrogen/ha.

# 1 August 2016

