

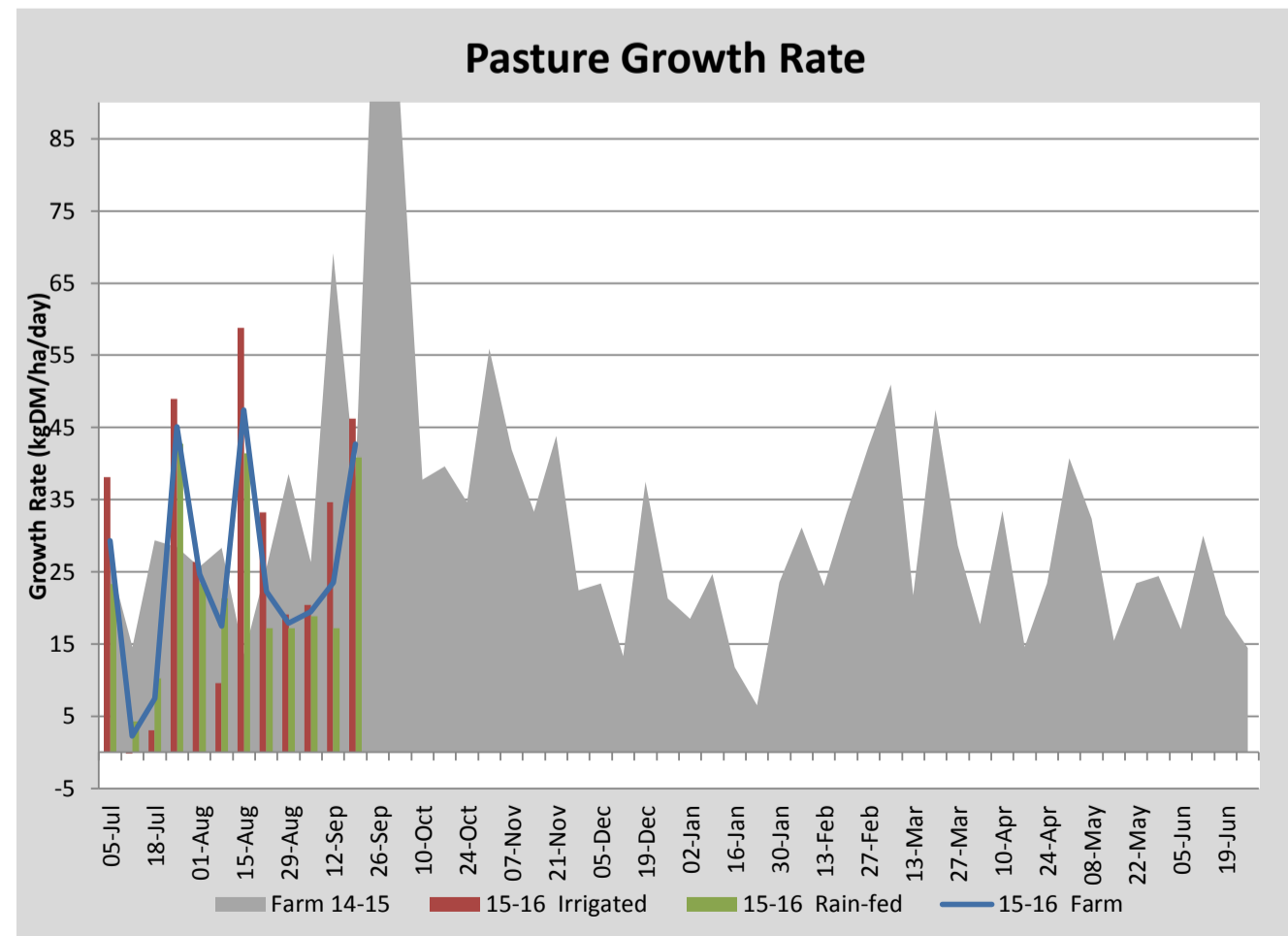
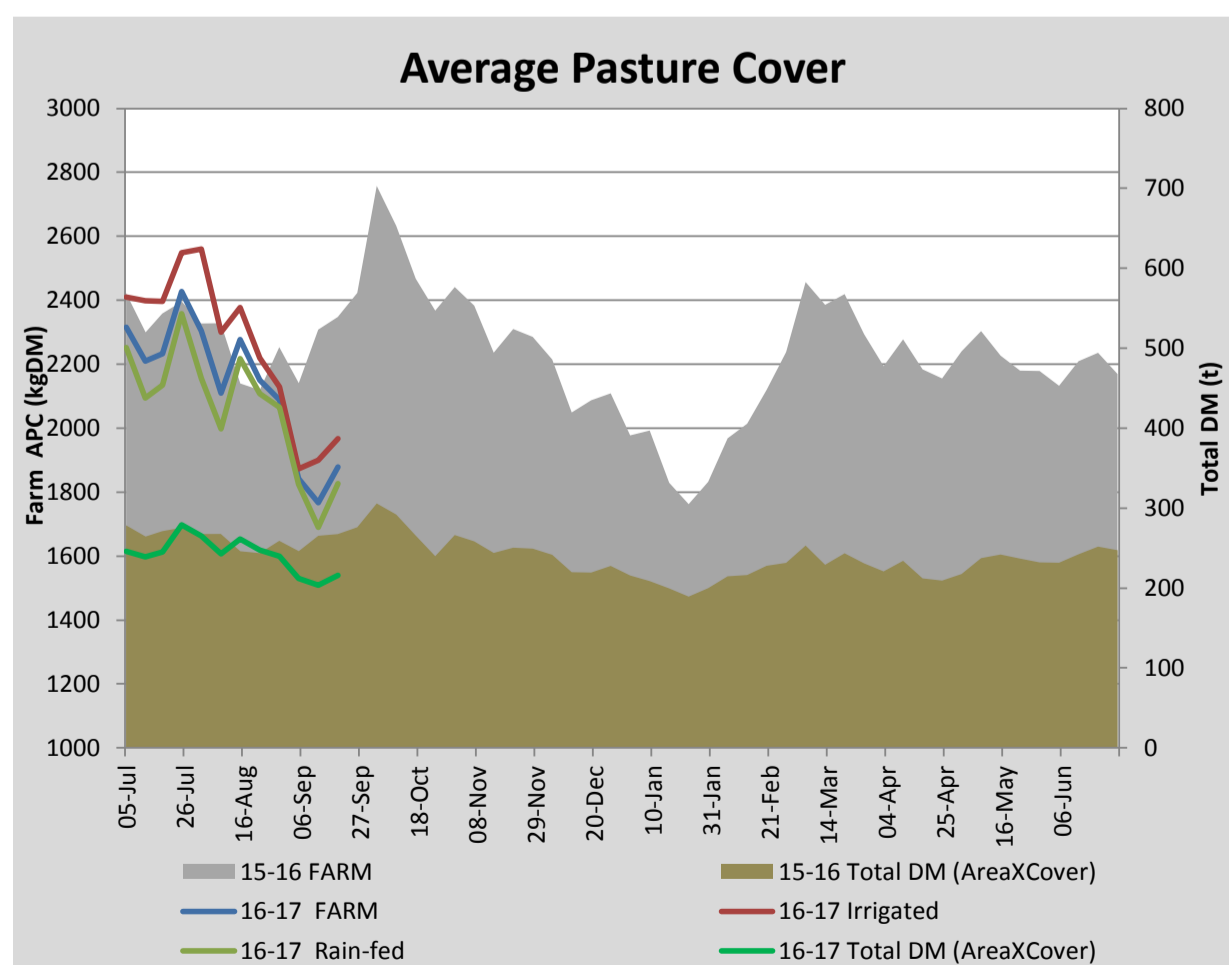
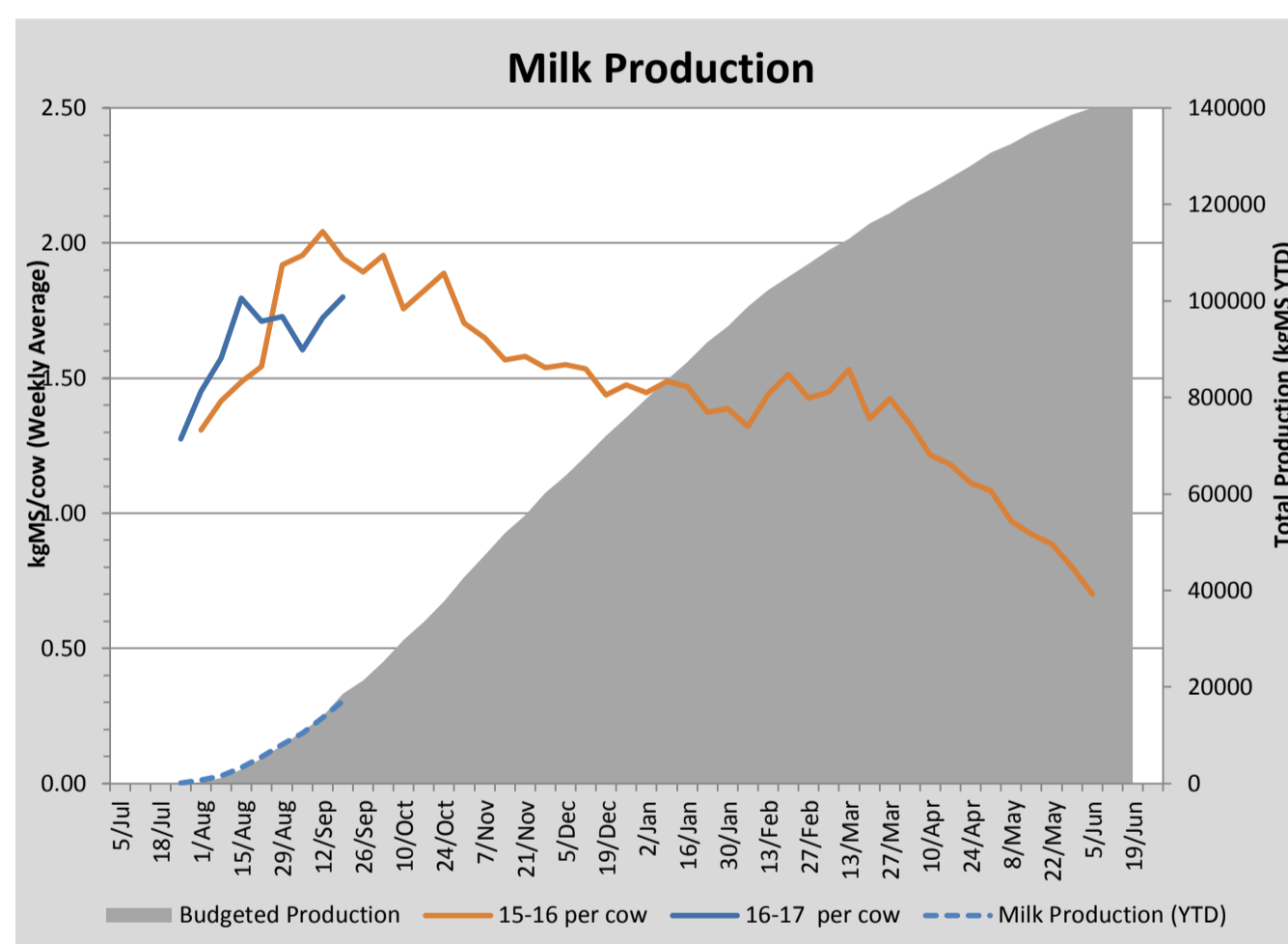
Key Summary Points

- 1 Average pasture cover increased this week to 1878kgDM/ha with good growth observed across the farm.
- 2 Badly pugged paddocks and dryland paddocks to be planted with summer crop will be sprayed out this week.
- 3 Key focus for the coming week is to watch residuals on and return cows to paddocks where required.

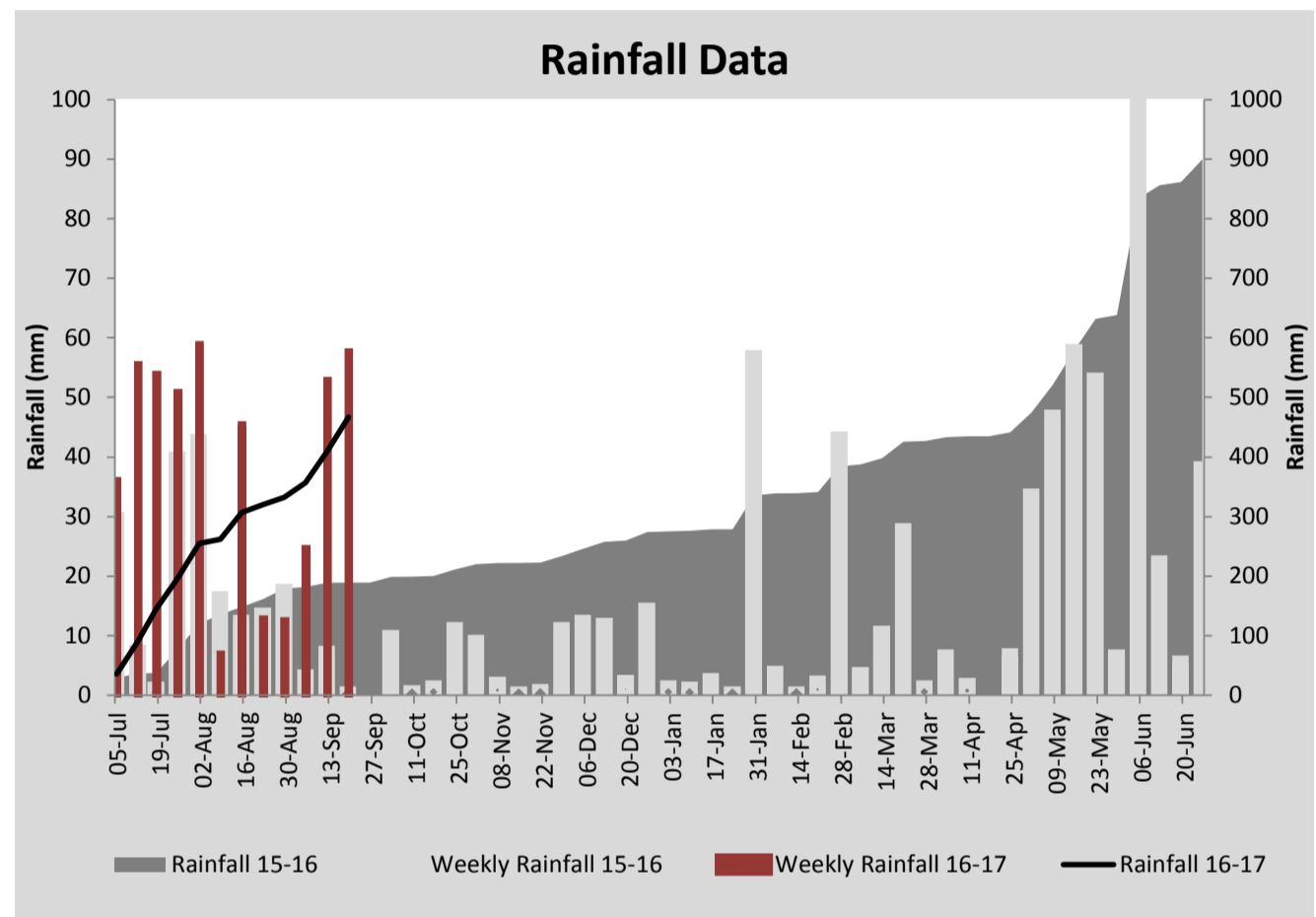
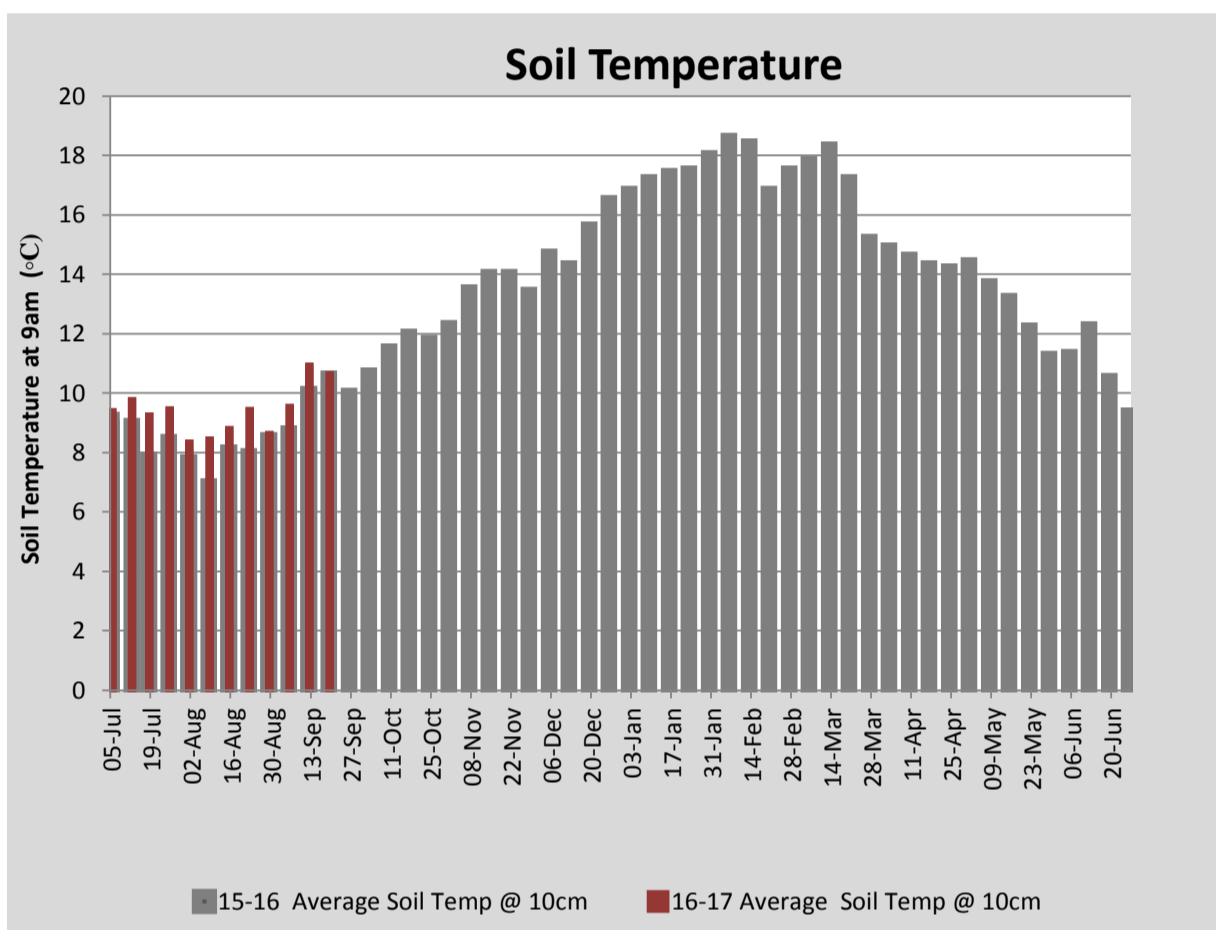
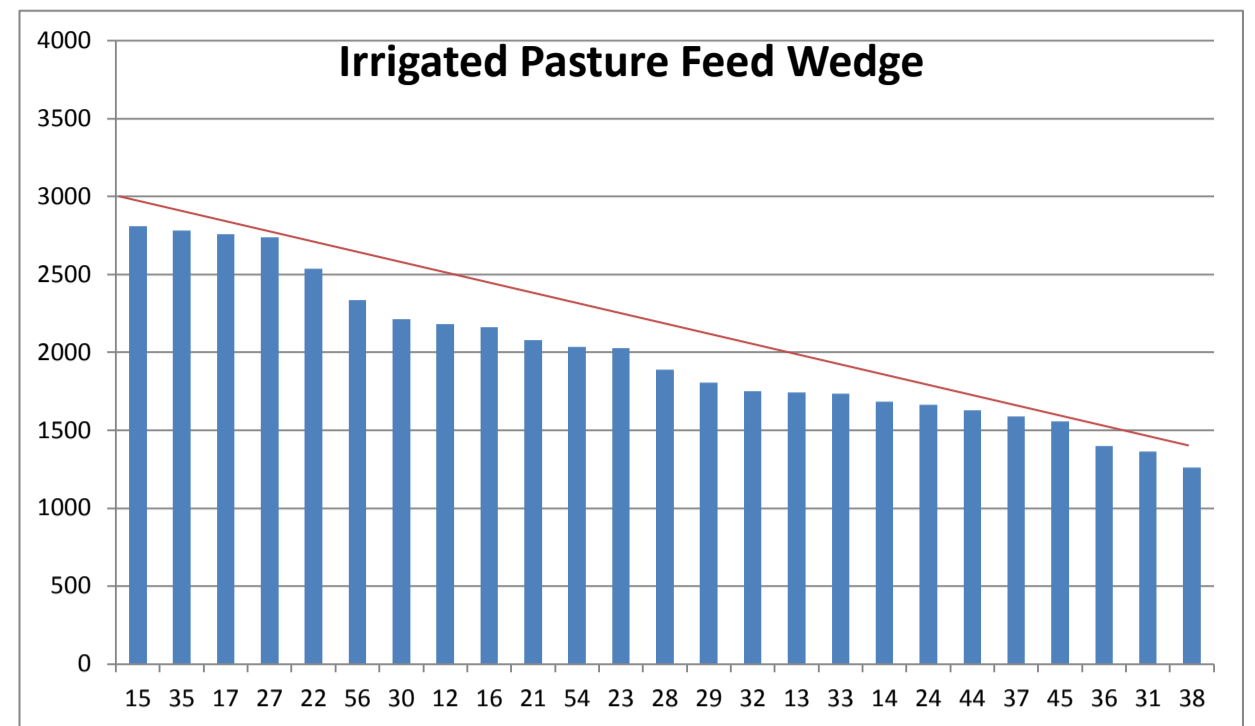
PASTURE INFORMATION	Farm			Irrigated			Rain-fed		
	Last Week	This Week	Variation	Last Week	This Week	Variation	Last Week	This Week	Variation
Grazed milking area (ha)	115.0	115.0	0.0	42.2	42.2	0.0	72.8	72.8	0
Rotation Length (days)	53	33	-20	81	25	-56	45	42	-3
Grazing allocation per day (ha)	2.2	3.5	1.3	0.5	1.7	1.2	1.6	1.8	0.1
Average time since last grazed (days)	66	66	0	48	48	0	76	76	0
Leaf appearance rate (days per leaf)	15	14	-1	15	14	-1	15	14	-1
Average Pasture Cover (kgDM/ha)	1767	1878	111	1900	1966	66	1690	1827	137
Pasture Growth Rate (kgDM/ha/day)	24	43	19	35	46	12	17	41	24
Post Grazing Biomass (kgDM/ha)	1400	1450	50						
Nitrogen applied YTD (kgN/ha)	34	34	0	0	0	0	0	0	0

*Please note all pasture calculations detailed above are based on the current Grazed Milking Area

MILK PRODUCTION	Last Week	This Week	Variation
Average No. cows in milk (vat)	310	320	10
Litres per cow	22.8	24.0	1.2
% Fat	4.28	4.30	0.02
% Protein	3.28	3.23	-0.05
MS/cow/day	1.72	1.80	0.08
MS/ha/day	4.73	5.10	0.37
BMCC	156,857	156,000	-857
Average Liveweight (kg)	445	444	-1
	Budget	To Date	Variation
Total Milk Production (kgMS)	18,571	17,137	92%
MS/ha YTD	163	177	108%



Last 7 days					
Milkers Diet	kg DM	MJ ME	CP (%)	NDF (%)	\$/cow
Pasture Intake	10.7	12.5	20.0	45.0	0.0
Concentrates	6.2	12.9	45.6	20.3	0.0
Silage	2.1	10.0	0.0	0.0	0.0
Grazed forage	0.0	0.0	0.0	0.0	0.0
Other feeds	0.0	0.0	0.0	0.0	0.0
Total	19	234.8	26.2	32.1	0
Target		90	16-18	>33	0



Analysis			
Expected growth rate next 7 days (kgDM/ha/day)	55	Target Leaf Grazing Stage	2.5-3.0
Total Demand from Pasture (kgDM/ha/day)	37	Predicted APC 7 days time	2006
APC balance (kgDM/ha/day)	18	Predicted APC Change	127.3

Discussion

Average pasture cover increased this week with growth rates close to 45kgDM/ha/day recorded on the milking platform. This being the case we have increased the daily DM allocation to 18kg/cow/day this coming week while maintaining the grain at 6kg/cow to allow us to build cover. With favourable weather forecast for the coming week we will start to progressively drop grain out of the ration. We will be watching residuals and returning cows were required. Pugged paddocks that are scheduled for renovation this spring have been sprayed off. Annual ryegrass paddocks were sprayed with glyphosate and cut for silage the following day. These will be sown down with perennial ryegrass. We will start grazing the over sown rape crop this coming week with R2 steers.

19 September 2016

