

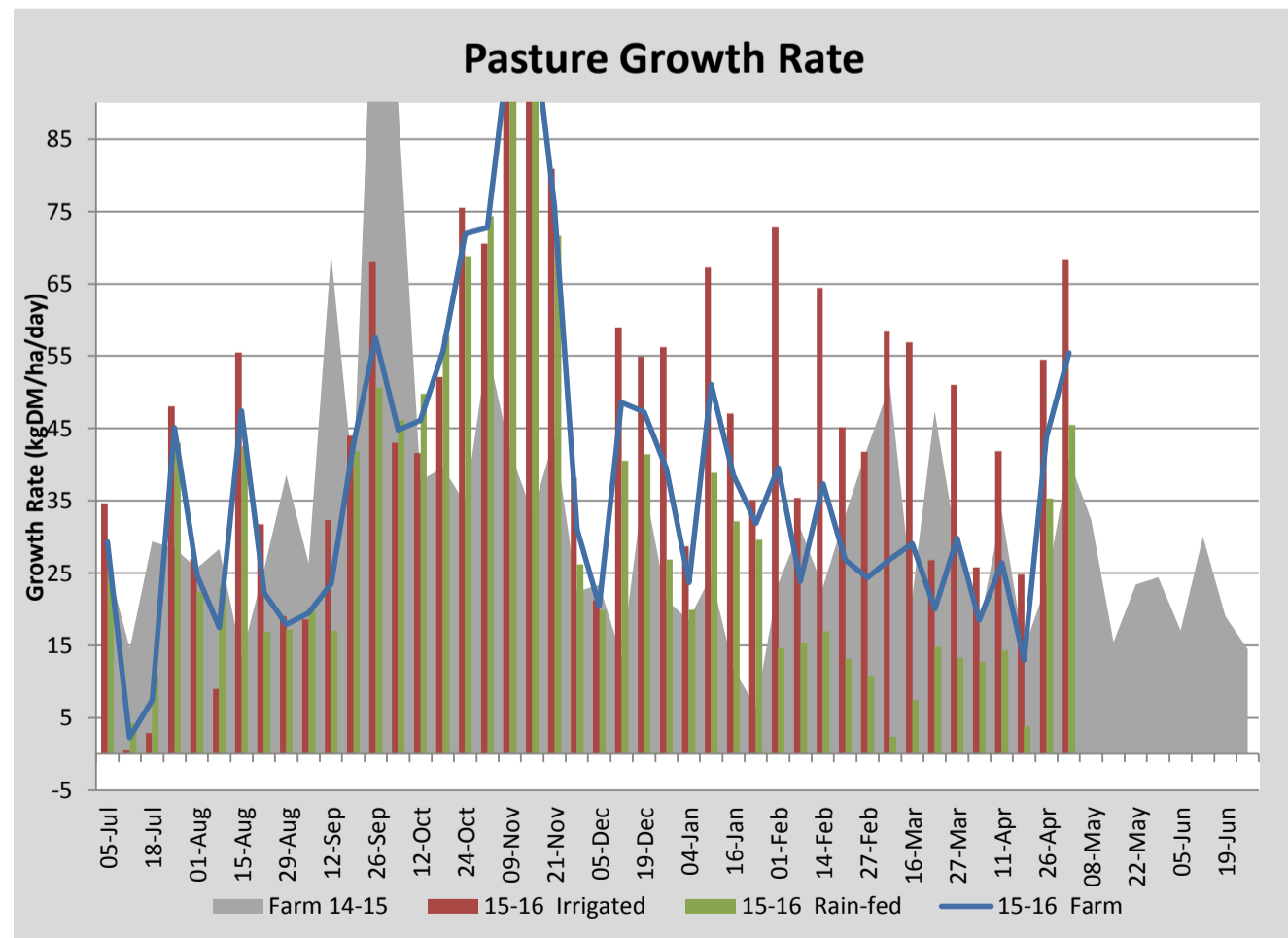
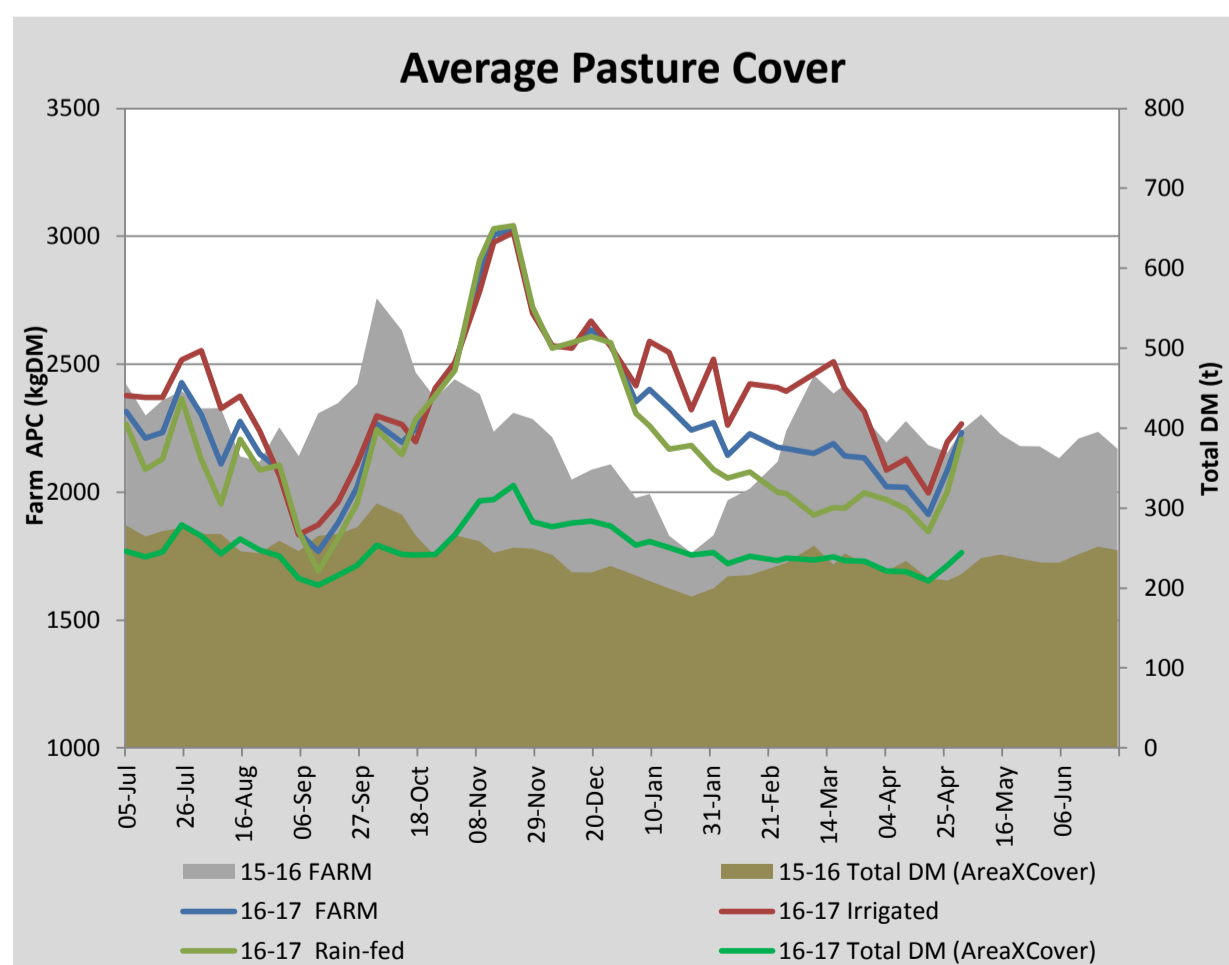
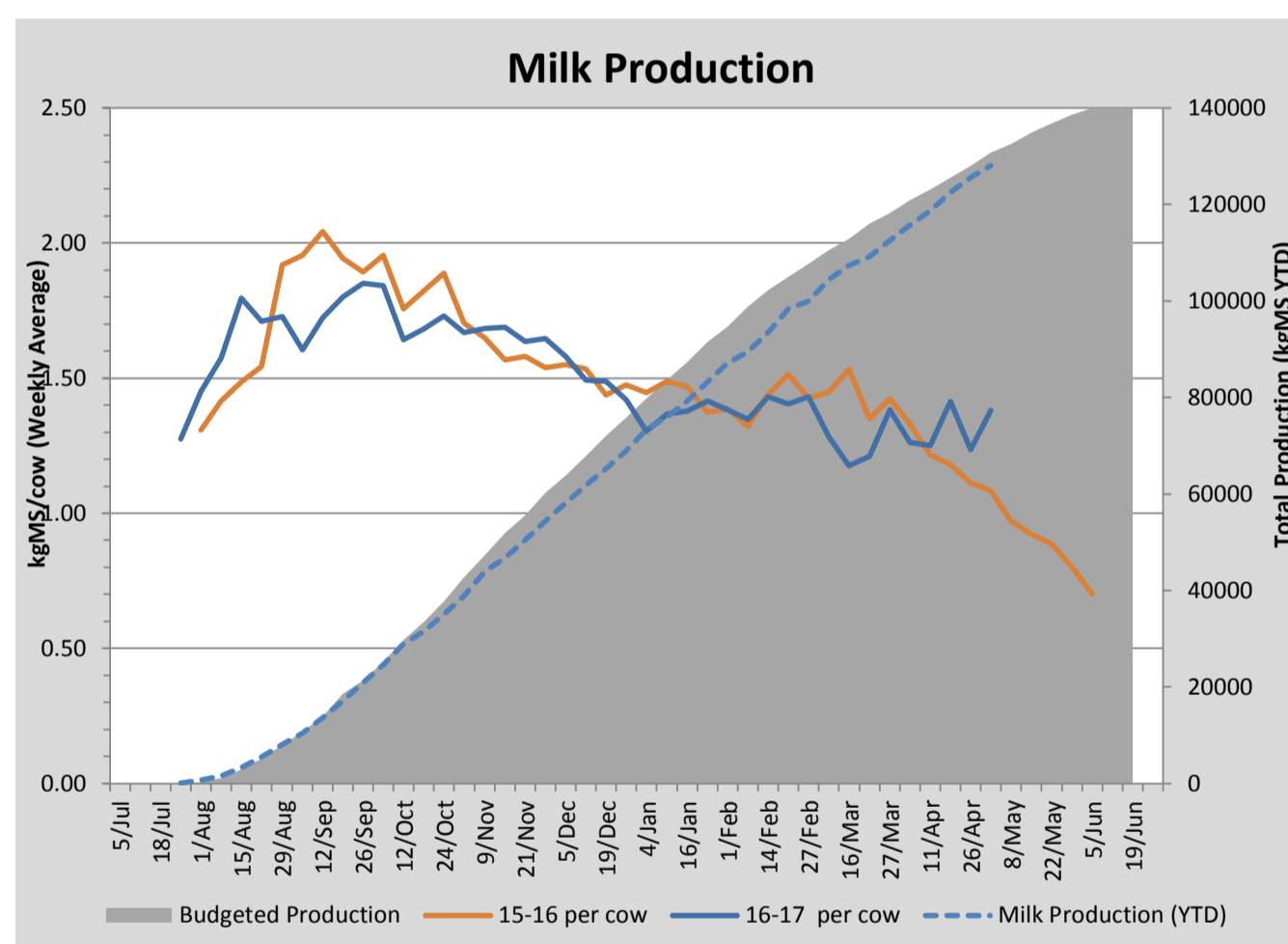
Key Summary Points

- 1 Average pasture cover increased significantly this week to 2233kgDM/ha with good growth observed across the milking platform.
- 2 Per cow milk solid production lifted slightly this week to 1.38kgMS/cow/day.
- 3 Focus for the coming weeks is to maintain an extended rotation and apply nitrogen to all grazed paddocks to build cover on the milking platform.

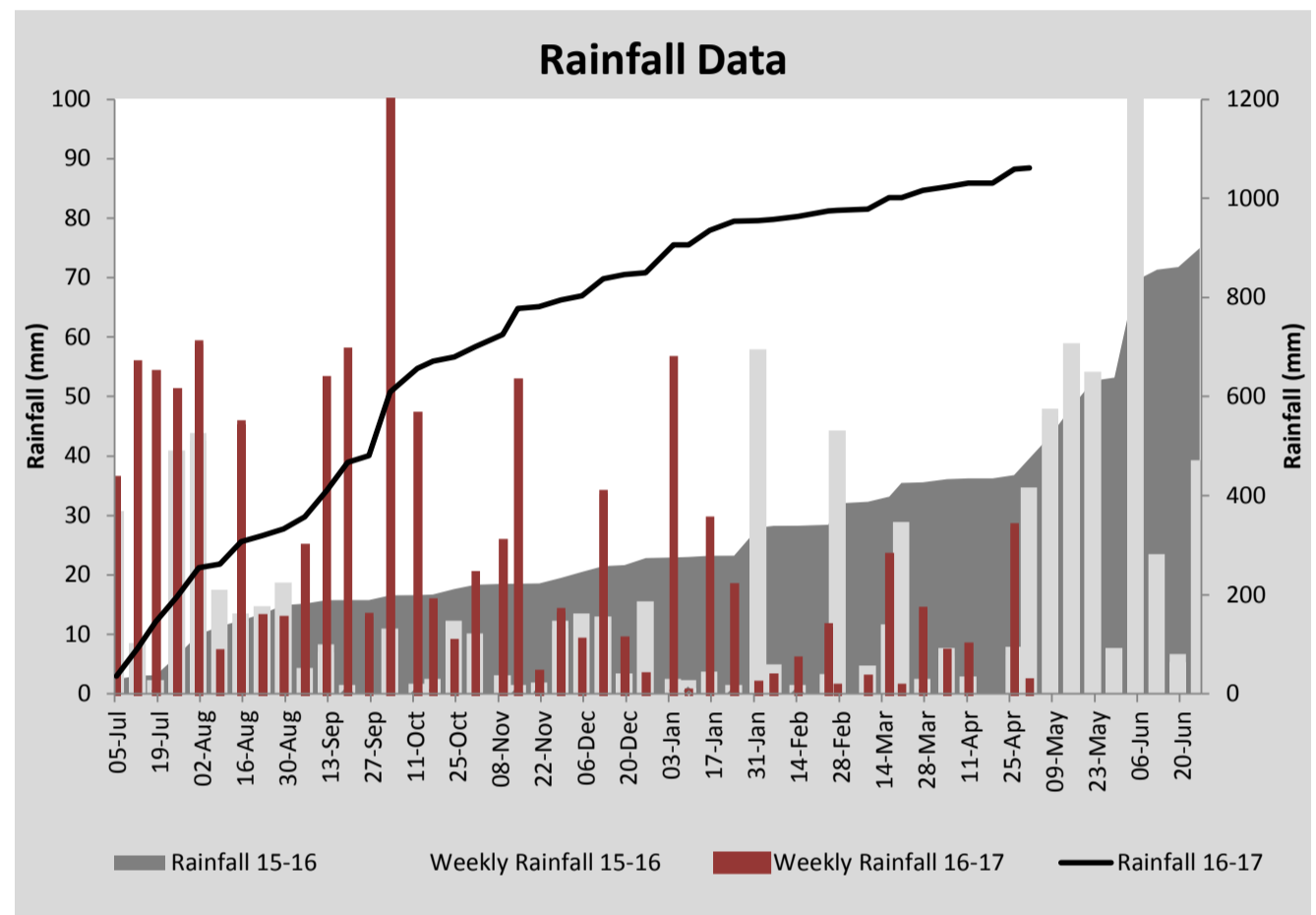
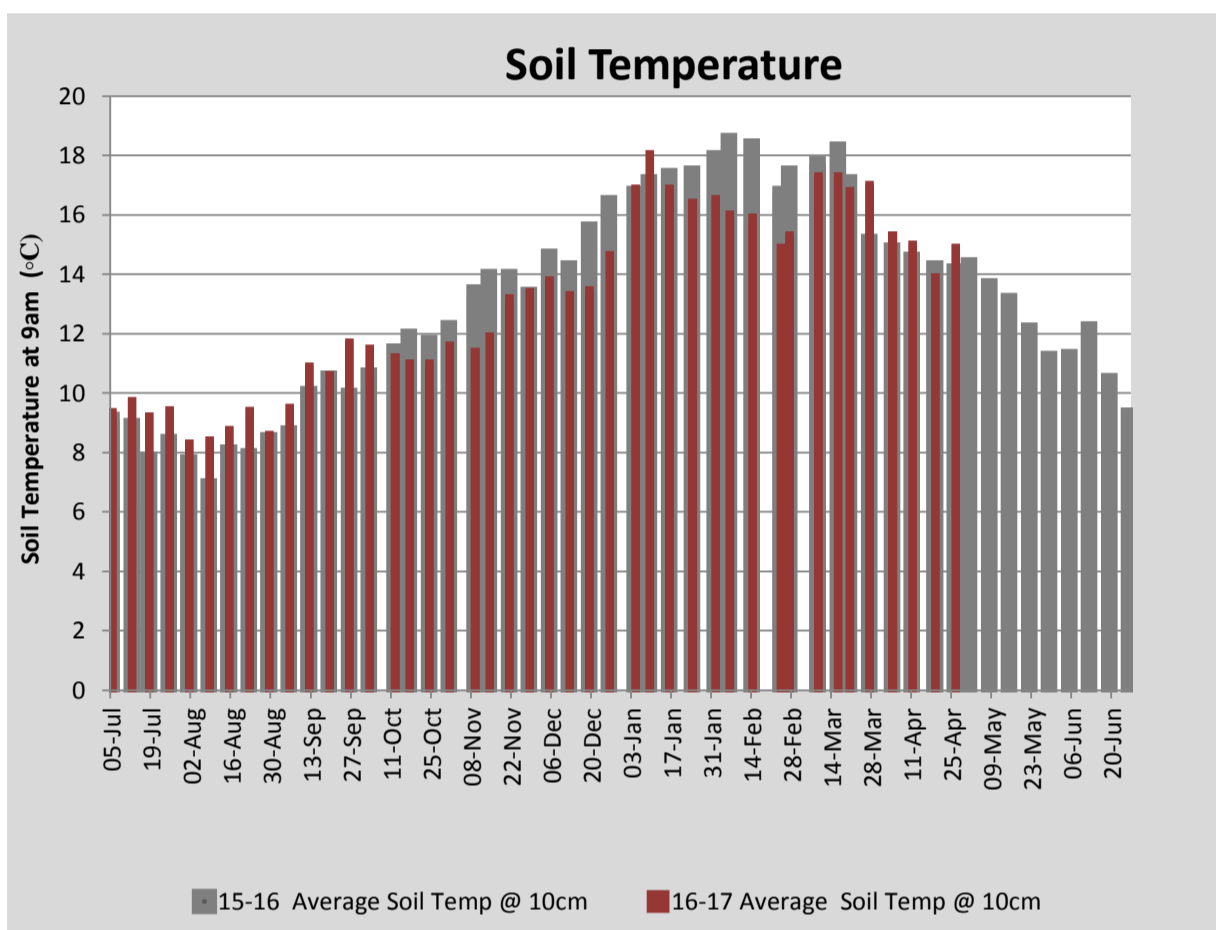
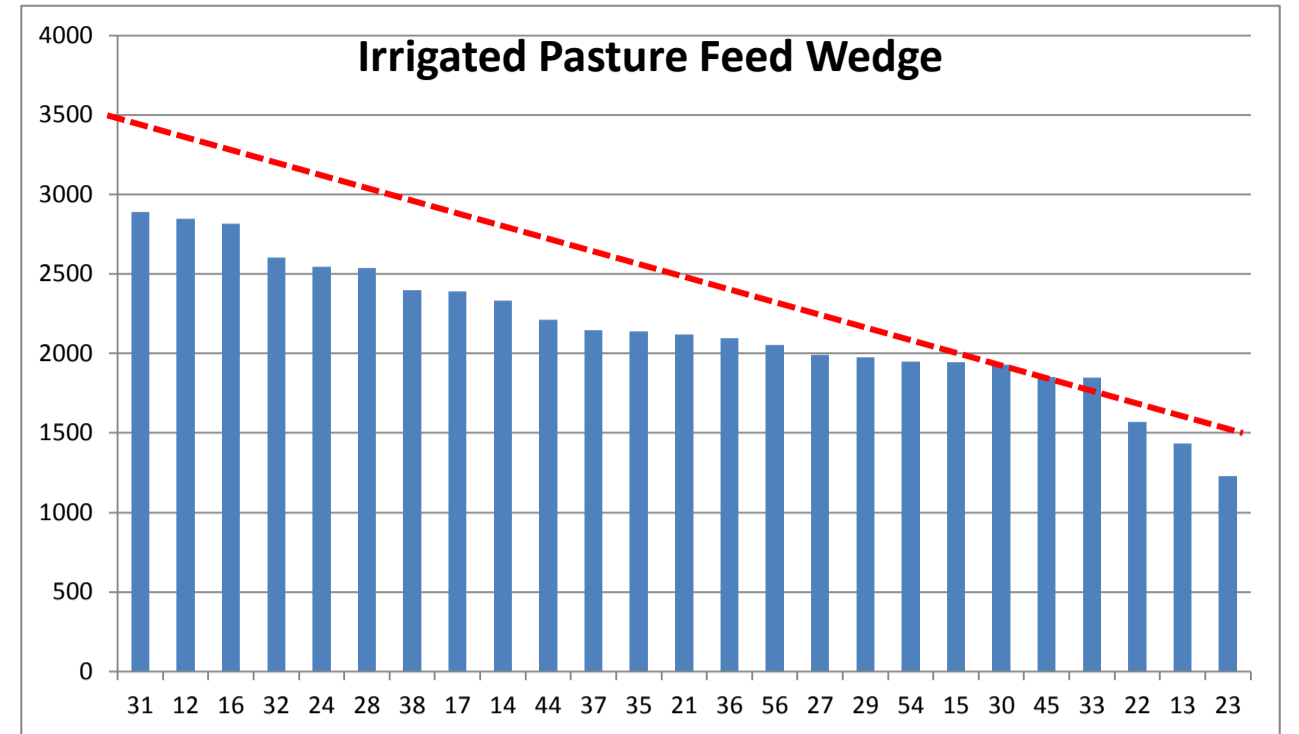
PASTURE INFORMATION	Farm			Irrigated			Rain-fed		
	Last Week	This Week	Variation	Last Week	This Week	Variation	Last Week	This Week	Variation
Grazed milking area (ha)	109.3	109.3	0.0	40.5	47.8	7.3	68.8	61.5	-7
Rotation Length (days)	55	48	-7	40	40	0	77	56	-21
Grazing allocation per day (ha)	2.0	2.3	0.3	1.2	1.2	0.0	0.8	1.1	0.3
Average time since last grazed (days)	35	55	19	25	31	6	43	73	30
Leaf appearance rate (days per leaf)	14	14	0	14	14	0	14	14	0
Average Pasture Cover (kgDM/ha)	2087	2233	146	2197	2267	70	2002	2207	205
Pasture Growth Rate (kgDM/ha/day)	44	55	12	55	68	14	35	45	10
Post Grazing Biomass (kgDM/ha)	1552	1634	82						
Nitrogen applied YTD (kgN/ha)	184	184	0	12	0	-12	3	0	-3

*Please note all pasture calculations detailed above are based on the current Grazed Milking Area

MILK PRODUCTION	Last Week	This Week	Variation
Average No. cows in milk (vat)	347	347	0
Litres per cow	13.1	14.5	1.4
% Fat	5.43	5.51	0.08
% Protein	3.98	4.02	0.04
MS/cow/day	1.24	1.38	0.15
MS/ha/day	3.79	4.24	0.45
BMCC	138,714	131,667	-7,048
Average Liveweight (kg)	0	0	0
	Budget	To Date	Variation
Total Milk Production (kgMS)	130,765	128,110	98%
MS/ha YTD	1147	1183	103%



Last 7 days					
Milkers Diet	kg DM	MJ ME	CP (%)	NDF (%)	\$/cow
Pasture Intake	6.4	0.0	0.0	0.0	0.0
Concentrates	7.0	12.9	15.6	20.3	0.0
Silage	3.6	0.0	0.0	0.0	0.0
Grazed forage	0.0	0.0	0.0	0.0	0.0
Other feeds	0.0	0.0	0.0	0.0	0.0
Total	17				0
Target			16-18	>33	0



Analysis			
Expected growth rate next 7 days (kgDM/ha/day)	34	Target Leaf Grazing Stage	2.5-3.0
Total Demand from Pasture (kgDM/ha/day)	27	Predicted APC 7 days time	2280
APC balance (kgDM/ha/day)	7	Predicted APC Change	47.0

Discussion

Average pasture cover increased this week to 2233kgDM/ha with good growth observed across the milking platform. With good growth expected to continue into the coming week we are hoping to continue to build cover on the milking platform. Nitrogen is being applied to all grazed paddocks at 40kgN/ha and capital fertiliser is being applied based on soil test results.

1 May 2017

