

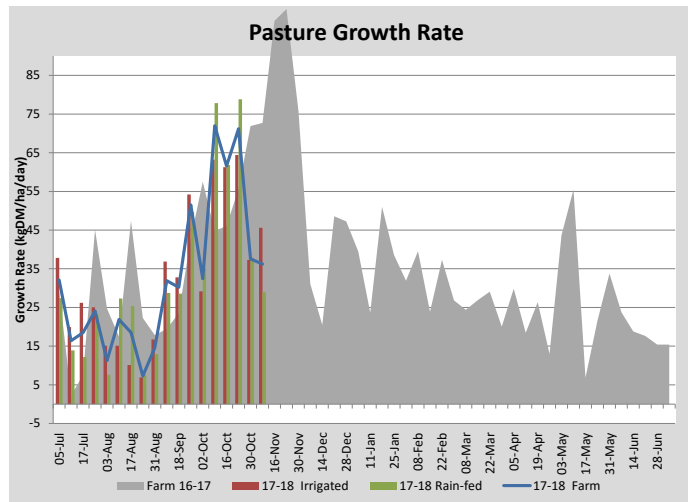
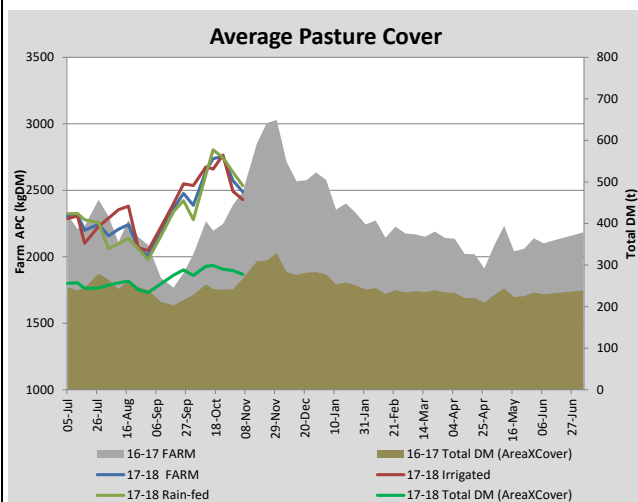
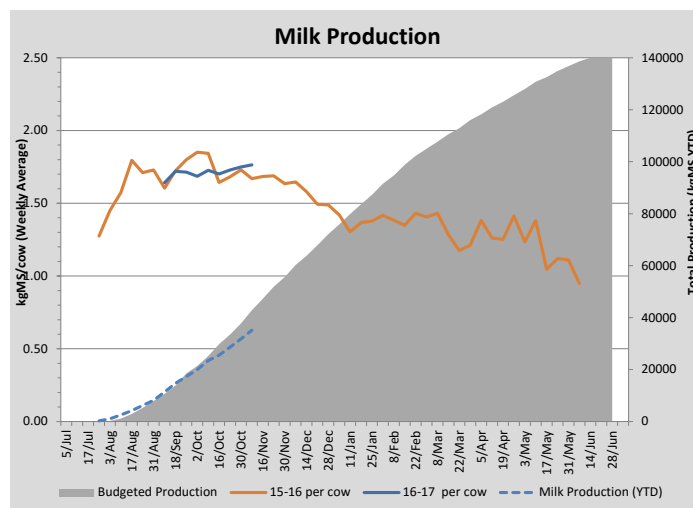
## Key Summary Points

- 1** Lack of rainfall has started to impact on both rainfed pasture growth rates and leaf emergence rate.
- 2** New pasture and crops continue to be irrigated and checked for pests.
- 3** No more silage will be cut from the milking area this season.

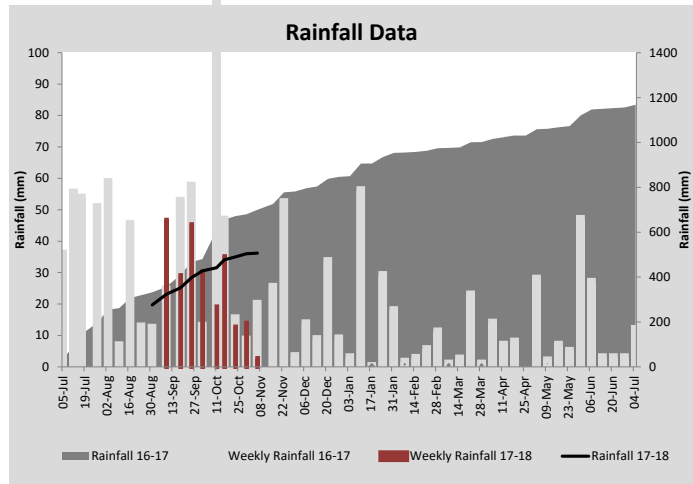
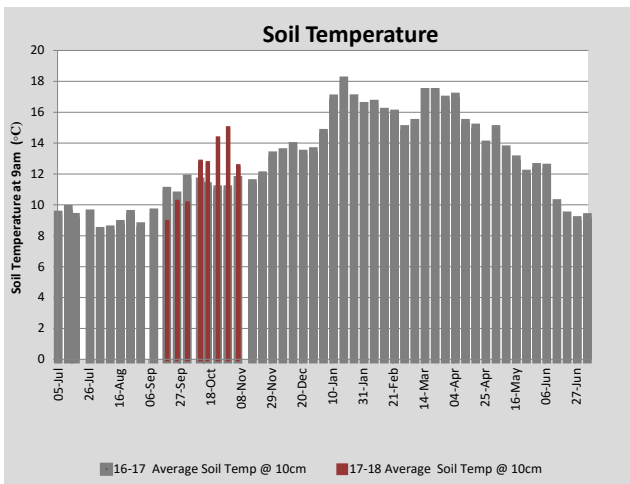
PASTURE INFORMATION	Farm			Irrigated			Rain-fed		
	Last Week	This Week	Variation	Last Week	This Week	Variation	Last Week	This Week	Variation
Grazed milking area (ha)	111.6	111.6	0.0	40.5	49.5	9.0	71.1	62.1	-9
Rotation Length (days)	41	44	4	29	46	17	59	43	-17
Grazing allocation per day (ha)	2.8	2.5	-0.2	1.7	1.1	-0.6	1.1	1.5	0.4
Average time since last grazed (days)	31	31	0	36	32	-4	27	31	4
Leaf appearance rate (days per leaf)	10	10	-0	10	9	-1	10	10	0
Average Pasture Cover (kgDM/ha)	2572	2488	-84	2492	2429	-63	2636	2534	-102
Pasture Growth Rate (kgDM/ha/day)	38	36	-1	37	46	8	38	29	-9
Post Grazing Biomass (kgDM/ha)	1526	1456	-70						
Nitrogen applied YTD (kgN/ha)	30	30	0	15	0	-15	14	0	-14

\*Please note all pasture calculations detailed above are based on the current Grazed Milking Area

MILK PRODUCTION	Last Week	This Week	Variation
Average No. cows in milk (vat)	315	315	0
Litres per cow	23.1	23.1	-0.1
% Fat	4.29	4.29	0.00
% Protein	3.30	3.36	0.06
MS/cow/day	1.75	1.76	0.01
MS/ha/day	4.88	4.92	0.04
BMCC	164,429	176,000	11,571
Average Liveweight (kg)	0	0	0
	Budget	To Date	Variation
Total Milk Production (kgMS)	42,795	35,121	-18%
MS/ha YTD	375	357	-5%



Last 7 days					
Milkers Diet	kg DM	MJ ME	CP (%)	NDF (%)	\$/cow
Pasture Intake	15.0	12.3	15.1	41.5	0.0
Concentrates	4.0	12.8	14.0	10.0	0.0
Silage	0.0	0.0	0.0	0.0	0.0
Grazed forage	0.0	0.0	0.0	0.0	0.0
Other feeds	0.0	0.0	0.0	0.0	0.0
<b>Total</b>	<b>19</b>	<b>236</b>	<b>14.9</b>	<b>34.9</b>	<b>0</b>
<b>Target</b>			<b>16-18</b>	<b>&gt;33</b>	<b>0</b>



Analysis			
Expected growth rate next 7 days (kgDM/ha/day)	35	Target Leaf Grazing Stage	2.0-2.5
Total Demand from Pasture (kgDM/ha/day)	35	Predicted APC 7 days time	2488
APC balance (kgDM/ha/day)	0	Predicted APC Change	0.2

## Discussion

Pasture growth has started to decrease on the rainfed area of the farm and leaf emergence has also slowed slightly. The rotation length on the rainfed milking area is starting to be slowed to match this. Having said that, the rainfed area is still green and growing and would respond well to rain over the next week. Given the slow-down in pasture growth rates, it is unlikely any more silage will be cut from the milking area. There is still some to be cut on the run-off. There have been some challenges with the k-line irrigation system related to a solenoid. This has resulted in the k-lines turning-off randomly. The offending solenoid has been replaced and this seems to have fixed the issue. The new pasture and crops have emerged. Irrigation using travelling irrigators is continuing to get these off to a good start.

# 6 November 2017

