

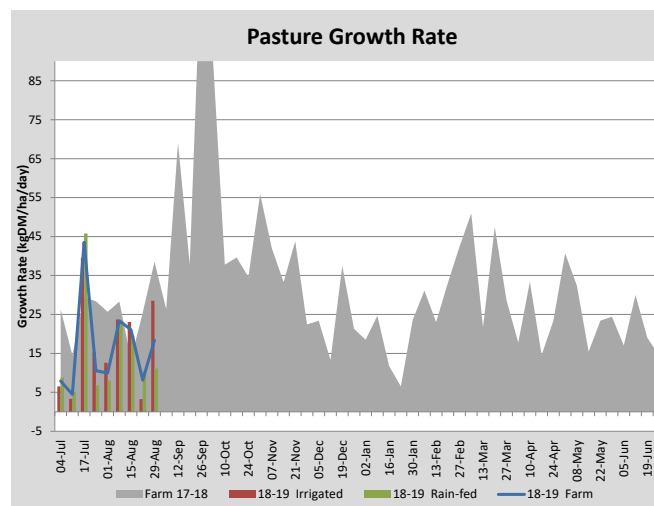
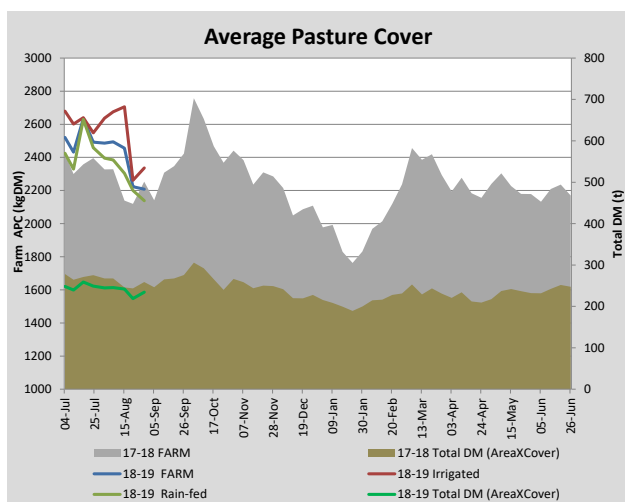
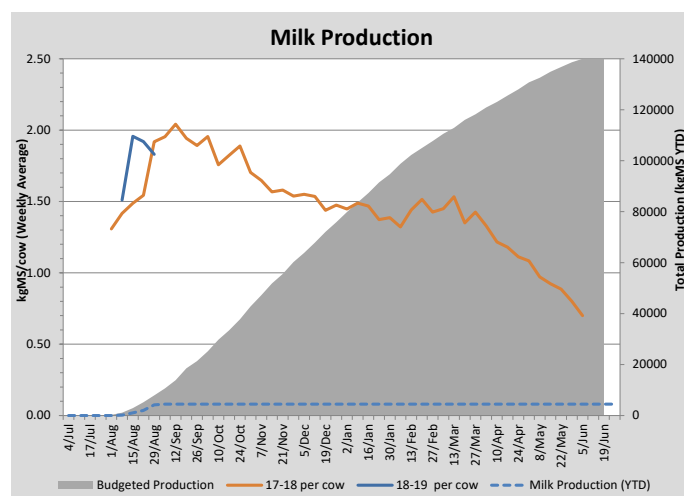
Key Summary Points

- 1 Nitrogen was applied this week.
- 2 Most of the heifers have calved.
- 3 Bulk Milk Cell Count has increased slightly.

PASTURE INFORMATION	Farm			Irrigated			Rain-fed		
	Last Week	This Week	Variation	Last Week	This Week	Variation	Last Week	This Week	Variation
Grazed milking area (ha)	98.5	106.2	7.7	37.2	37.2	0.0	61.3	69.0	7.7
Leaf appearance rate (days per leaf)	20	18	-2	20	18	-2	20	18	-2
Average Pasture Cover (kgDM/ha)	2223	2208	-15	2262	2337	75	2200	2138	-62
Pasture Growth Rate (kgDM/ha/day)	8	18	10	3	29	25	10	11	1
Post Grazing Biomass (kgDM/ha)	1560	1512	-48						
Nitrogen applied YTD (kgN/ha)	0	11	11	0	19	19	0	6	6

*Please note all pasture calculations detailed above are based on the current Grazed Milking Area

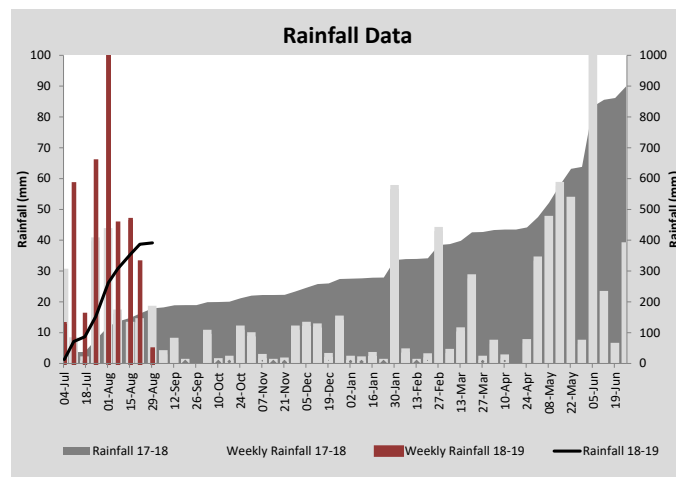
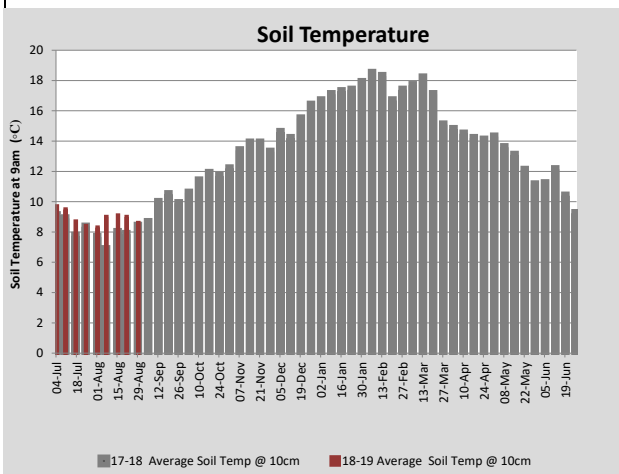
MILK PRODUCTION	Last Week	This Week	Variation
Average No. cows in milk (vat)	144	200	56
Litres per cow	24.0	24.3	0.3
% Fat	4.51	4.18	-0.33
% Protein	3.38	3.35	-0.03
MS/cow/day	1.92	1.83	-0.09
MS/ha/day	2.45	3.24	0.79
BMCC	195	239	44
Average Liveweight (kg)	0	0	0
	Budget	To Date	Variation
Total Milk Production (kgMS)	7,930	4,190	-53%
MS/ha YTD	70		



Last 7 days					
Milkers Diet	kg DM	MJ ME	CP (%)	NDF (%)	\$/cow
Pasture Intake	16.0	13.3	22.6	45.2	0.0
Concentrates	3.0	12.5	14.0	20.0	0.0
Silage	0.0	0.0	0.0	0.0	0.0
Grazed forage	0.0	0.0	0.0	0.0	0.0
Other feeds	0.0	0.0	0.0	0.0	0.0
Total	19	250.3	21.2	41.2	0
Target		210	16-18	>33	0



The auto calf feeder shed is now full with 96 calves. The rest of the calves are being reared using conventional feeders.



Analysis			
Expected growth rate next 7 days (kgDM/ha/day)	20	Target Leaf Grazing Stage	2.5-3.0
Total Demand from Pasture (kgDM/ha/day)	32	Predicted APC 7 days time	2122
APC balance (kgDM/ha/day)	-12	Predicted APC Change	-85.7

Discussion

The improved weather conditions allowed nitrogen to be spread on the farm this week. All recently grazed paddocks on both the milking area and the run-off have received an application of urea. Calving is progressing well with two-thirds of the cows calved and only five heifers remaining to calve. The bull to heifer calf ratio continues to be slightly in favour of the bulls at 1.07:1. The feed wedge is showing an upcoming feed gap but there is still silage on hand to feed if needed. Last week the cell count was consistently below 200,000 cells/ml but it has increased again. While it is still under 250,000 cells/ml it doesn't leave a lot of margin for error so careful monitoring is still taking place. Cows identified with high cell count two weeks ago from a herd test were run as a separate herd. All of these have been tested since using a DeLaval cell count meter and either returned to the milking herd if their cell count was below 250,000 cells/ml or put with the colostrum herd to provide milk for the calves.

29 August 2018

