

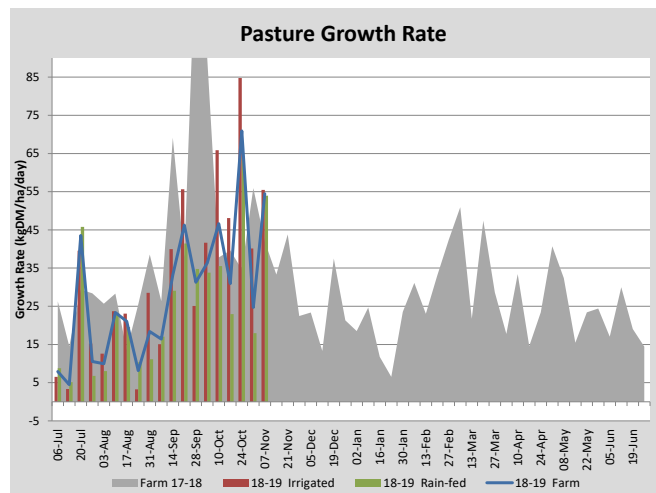
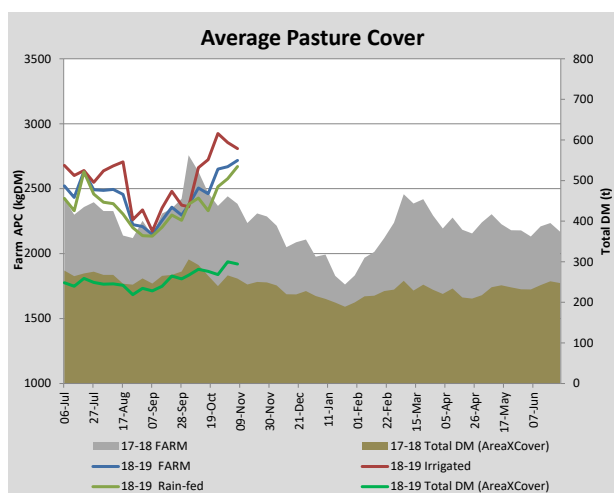
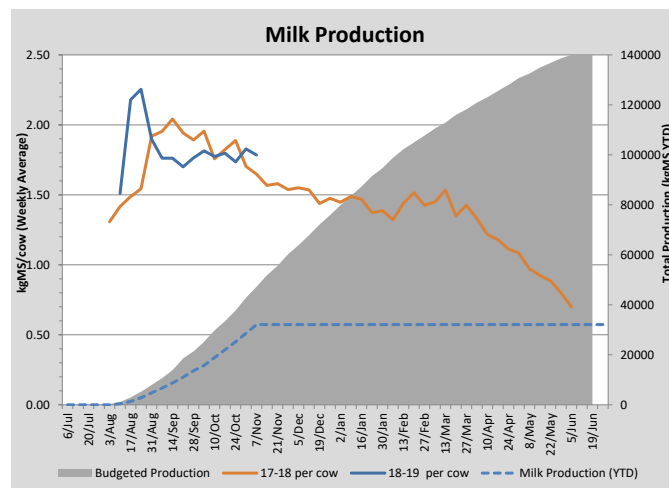
Key Summary Points

| | |
|---|--|
| 1 | |
| 2 | |
| 3 | |

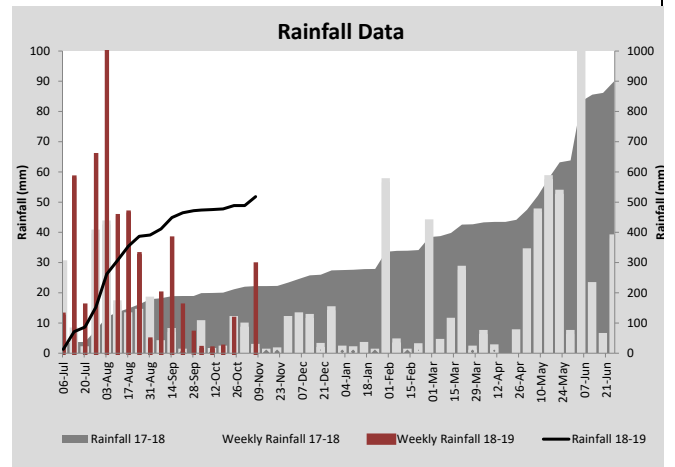
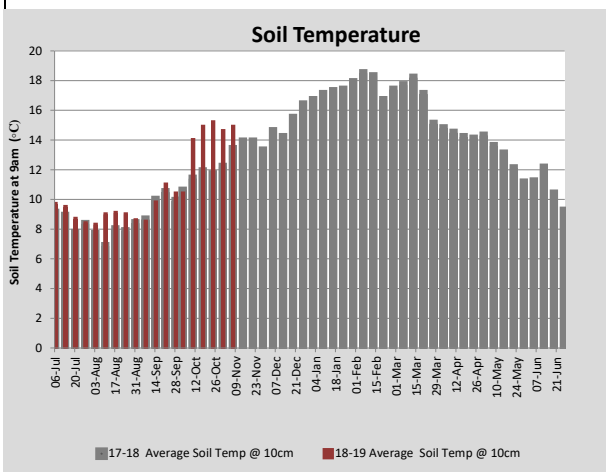
| PASTURE INFORMATION | Farm | | | Irrigated | | | Rain-fed | | |
|--------------------------------------|-----------|-----------|-----------|-----------|-----------|-----------|-----------|-----------|-----------|
| | Last Week | This Week | Variation | Last Week | This Week | Variation | Last Week | This Week | Variation |
| Grazed milking area (ha) | 112.3 | 101.3 | -11.0 | 37.2 | 36.1 | -1.1 | 75.2 | 60.3 | -14.9 |
| Leaf appearance rate (days per leaf) | 11 | 10 | -1 | 7 | 7 | 0 | 13 | 13 | 0 |
| Average Pasture Cover (kgDM/ha) | 2460 | 2651 | 190 | 2723 | 2924 | 201 | 2330 | 2516 | 185 |
| Pasture Growth Rate (kgDM/ha/day) | 31 | 71 | 40 | 48 | 85 | 37 | 23 | 64 | 41 |
| Post Grazing Biomass (kgDM/ha) | 1577 | 1575 | -2 | | | | | | |
| Nitrogen applied YTD (kgN/ha) | 38 | 38 | 0 | 8 | 0 | -8 | 11 | 0 | -11 |

*Please note all pasture calculations detailed above are based on the current Grazed Milking Area

| MILK PRODUCTION | Last Week | This Week | Variation |
|--------------------------------|-----------|-----------|-----------|
| Average No. cows in milk (vat) | 306 | 316 | 10 |
| Litres per cow | 25.1 | 23.9 | -1.2 |
| % Fat | 3.91 | 4.07 | 0.16 |
| % Protein | 3.13 | 3.14 | 0.01 |
| MS/cow/day | 1.80 | 1.74 | -0.06 |
| MS/ha/day | 4.87 | 4.85 | -0.01 |
| BMCC | 173 | 228 | 55 |
| Average Liveweight (kg) | 0 | 0 | 0 |
| | Budget | To Date | Variation |
| Total Milk Production (kgMS) | 37,750 | 25,201 | -67% |
| MS/ha YTD | 331 | | |



| Last 7 days | | | | | |
|----------------|-----------|--------------|--------------|---------------|----------|
| Milkers Diet | kg DM | MJ ME | CP (%) | NDF (%) | \$/cow |
| Pasture Intake | 16.0 | 11.6 | 20.3 | 49.4 | 0.0 |
| Concentrates | 3.0 | 12.5 | 14.0 | 20.0 | 0.0 |
| Silage | 0.0 | 0.0 | 0.0 | 0.0 | 0.0 |
| Grazed forage | 0.0 | 0.0 | 0.0 | 0.0 | 0.0 |
| Other feeds | 0.0 | 0.0 | 0.0 | 0.0 | 0.0 |
| Total | 19 | 223.1 | 19.3 | 44.8 | 0 |
| Target | | 210 | 16-18 | >33 | 0 |



| Analysis | | | |
|--|----|---------------------------|---------|
| Expected growth rate next 7 days (kgDM/ha/day) | 45 | Target Leaf Grazing Stage | 2.5-3.0 |
| Total Demand from Pasture (kgDM/ha/day) | 54 | Predicted APC 7 days time | 2584 |
| APC balance (kgDM/ha/day) | -9 | Predicted APC Change | -66.2 |

Discussion

24 October 2018

