

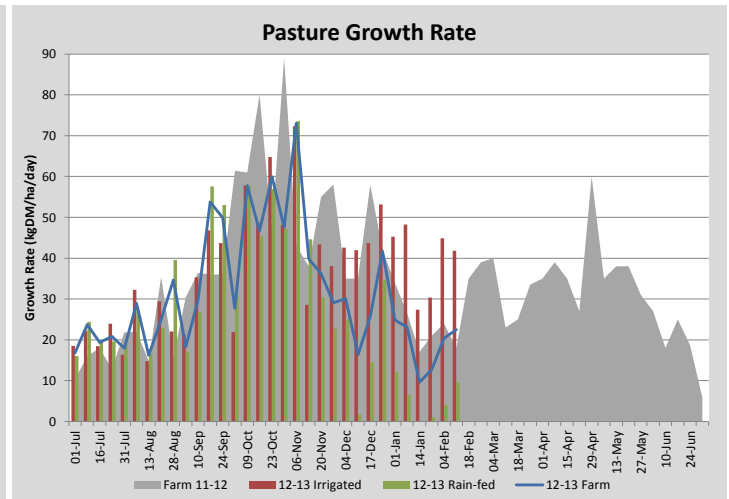
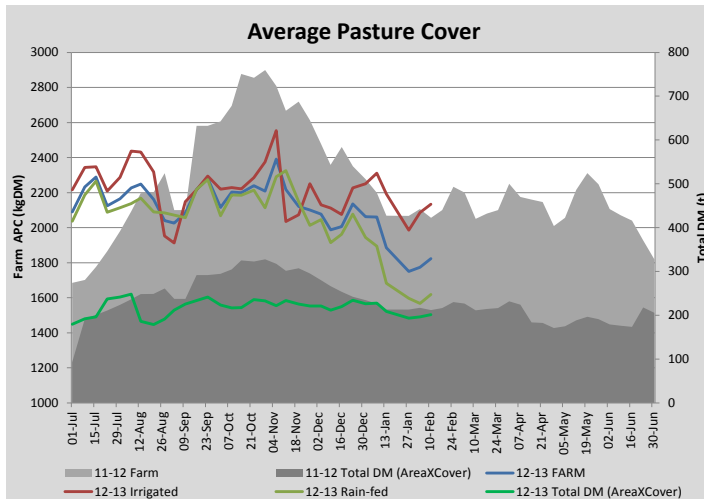
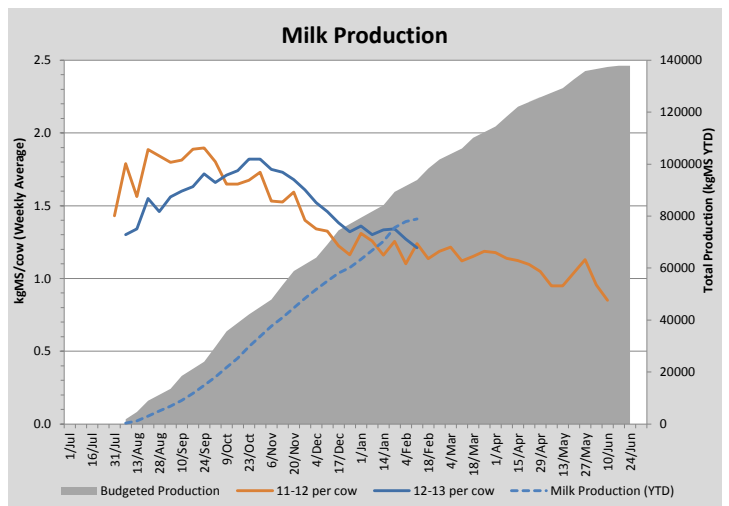
Key Summary Points

- 1** Milk production has continued to drop and per cow production is now level with this time last year.
- 2** Average pasture cover has increased on both irrigated and rain-fed pastures over the last 7 days. However, the rain-fed is a short term response to recent rainfall and will not persist given the current soil moisture levels.
- 3** Key focus this week will be on monitoring the winter kale crop for insect pests, carefully allocating remaining available irrigation water and reducing feed demand to match available growth

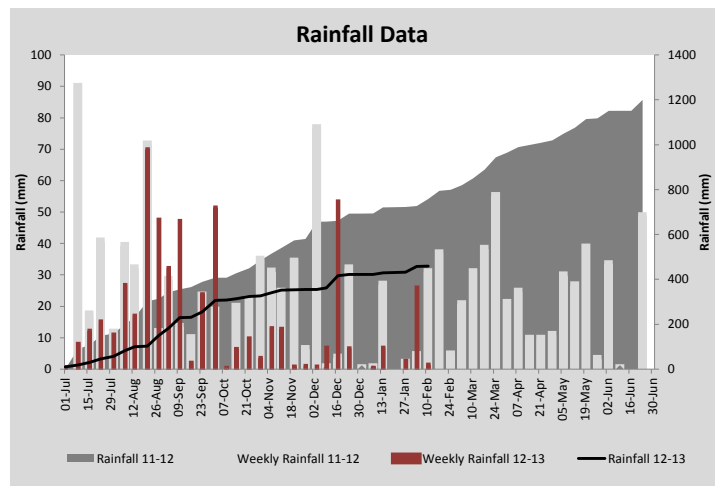
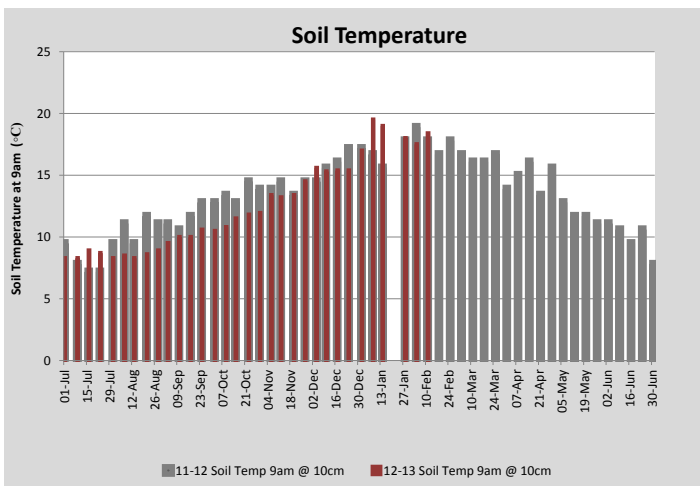
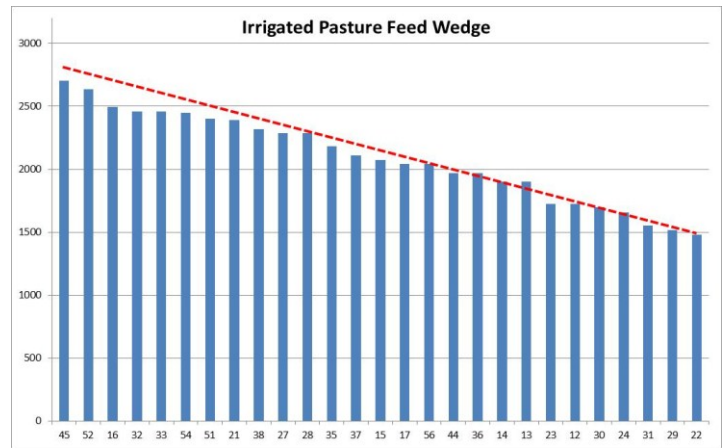
PASTURE INFORMATION	Farm			Irrigated			Rain-fed		
	Last Week	This Week	Variation	Last Week	This Week	Variation	Last Week	This Week	Variation
Grazed milking area (ha)	110.5	110.5	0.0	44.1	44.1	0.00	66.5	66.5	0.00
Rotation Length (days)	46	46		49	49		44	44	
Grazing allocation per day (ha)	2.4	2.4	0.00	0.9	0.9	0.00	1.5	1.5	0.00
Average time since last grazed (days)	50	53	3	28	28	0	65	70	5
Leaf appearance rate (days per leaf)	10	10	0	10	10	0	#N/A	#N/A	#N/A
Average Pasture Cover (kgDM/ha)	1774	1824	49	2086	2133	47	1568	1618	51
Pasture Growth Rate (kgDM/ha/day)	20	22	2	45	42	-3	4	10	6
Post Grazing Biomass (kgDM/ha)	1450	1450	0						
Nitrogen applied YTD (kgN/ha)	192	201	9	5	9	5	0	0	0

*Please note all pasture calculations detailed above are based on the current Grazed Milking Area

MILK PRODUCTION	Last Week	This Week	Variation
No cows in milk (vat)	273	271	2.00
Litres per cow	16.8	15.9	0.90
% Fat	4.44	4.46	0.02
% Protein	3.13	3.17	0.04
MS/cow/day	1.27	1.21	0.06
MS/ha/day	2.88	2.29	0.58
BMCC	181	192	11.00
Average Liveweight (kg)			
	Budget	To Date	Variation
Total Milk Production (kgMS)	93893	78875	84%
MS/ha YTD	838	704	-134



Last 7 days					
Milkers Diet	kg DM	ME	CP	NDF	\$/cow
Pasture Intake	6.5	10.0	0.0	0.0	0.0
Concentrates	5.0	11.0	0.0	0.0	0.0
Silage	5.5	10.0	0.0	0.0	0.0
Grazed forage	0.0	0.0	0.0	0.0	0.0
Other feeds	0.0	0.0	0.0	0.0	0.0
Total	17	175	0	0	0
Target	17		0	0	0



Analysis			
Expected growth rate next 7 days (kgDM/ha/day)	18	Target Leaf Grazing Stage	3.0
Total Demand from Pasture (kgDM/ha/day)	16	Predicted APC 7 days time	1835
APC balance (kgDM/ha/day)	2	Predicted APC Change	10.9

Discussion

Reasonable growth rates on the irrigated pastures and a small amount of growth on the rain-fed has allowed us to build average pasture cover the last week. We will spray out two paddocks under the centre pivot (short term cultivars) this week and aim to return to perennial pasture as soon as possible. This will reduce our currently available irrigated area down to 40ha. We will continue to maintain a 27 day rotation on this irrigated portion of the farm and use minimal amounts of rain-fed pasture (125 day rotation). In order to maintain this we will continue to supplement the cows with 5kg/cow/day of pellets in the shed and 5.5kg/cow/day of pasture silage. We are planning to dry off an additional 15-20 low producing cows in the coming week to further reduce feed demand and are also investigating additional low-cost supplement options (eg. Almond Hulls). We have now grazed almost all rain-fed paddocks which have cover available. We therefore are aiming to reduce our feed demand from pasture to a level which can be maintained through our irrigated pastures. 40ha growing at 40kgDM/ha/day provides approximately 1600kgDM/ha/day. At our current supplement feeding rates this should sustain around 250 cows.

11 February 2013

