

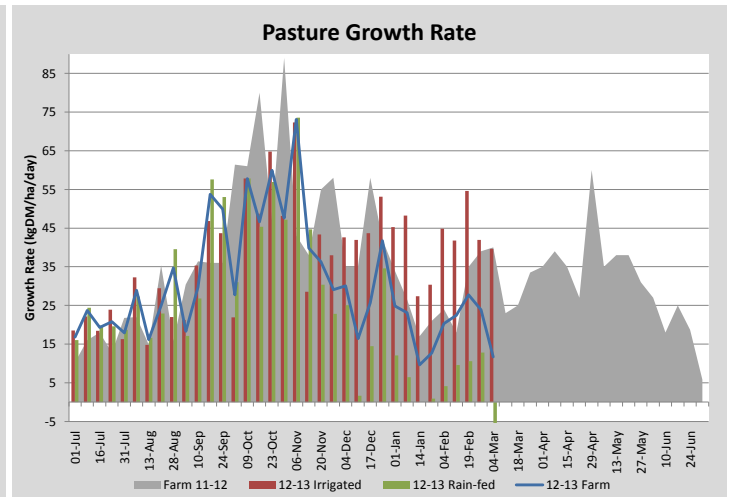
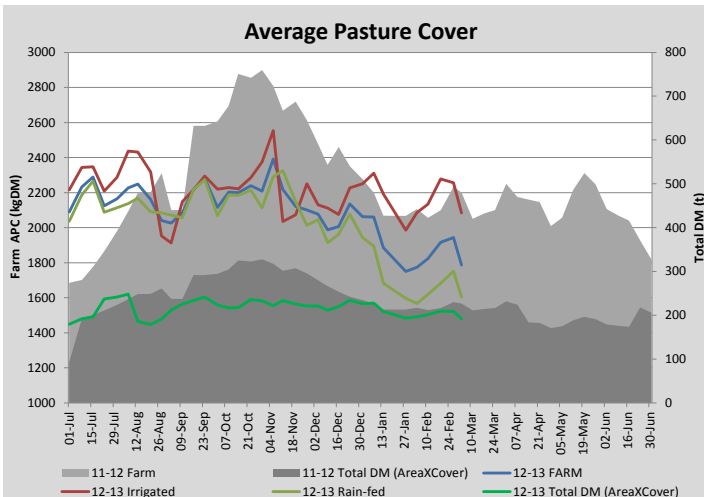
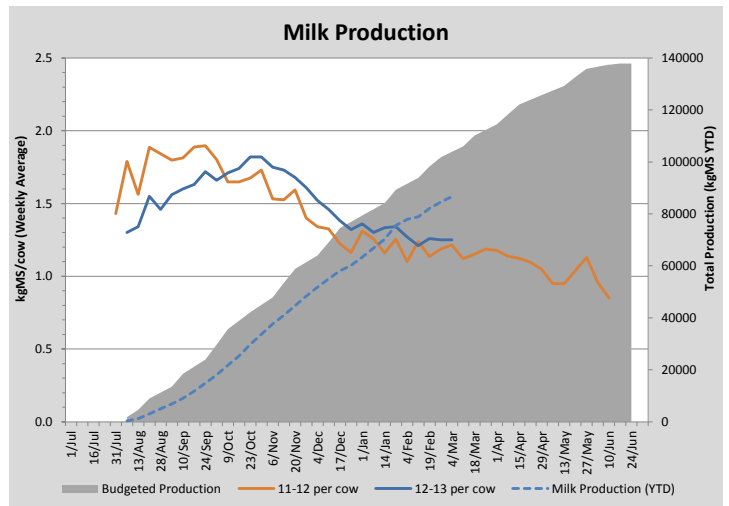
Key Summary Points

- 1** Growth rates are down and rain-fed paddocks are now going backwards
- 2** With no autumn break in sight we will look to dry off more cows next week to reduce feed demand
- 3** Key focus this week continues to be maintaining target weight gains on young stock and maintaining /improving cow condition in the milkers

PASTURE INFORMATION	Farm			Irrigated			Rain-fed		
	Last Week	This Week	Variation	Last Week	This Week	Variation	Last Week	This Week	Variation
Grazed milking area (ha)	107.3	107.3	0.0	40.9	40.9	0.00	66.5	66.5	0.00
Rotation Length (days)	60	60		31	31		133	133	
Grazing allocation per day (ha)	1.8	1.8	0.00	1.3	1.3	0.00	0.5	0.5	0.00
Average time since last grazed (days)	60	54	-6	28	28	0	80	70	-10
Leaf appearance rate (days per leaf)	10	10	0	10	10	0	#N/A	#N/A	#N/A
Average Pasture Cover (kgDM/ha)	1943	1787	-156	2257	2084	-173	1751	1605	-146
Pasture Growth Rate (kgDM/ha/day)	24	12	-12	42	40	-2	13	-5	-18
Post Grazing Biomass (kgDM/ha)	1515	1450	65						
Nitrogen applied YTD (kgN/ha)	204	204	0	3	0	-3	0	0	0

*Please note all pasture calculations detailed above are based on the current Grazed Milking Area

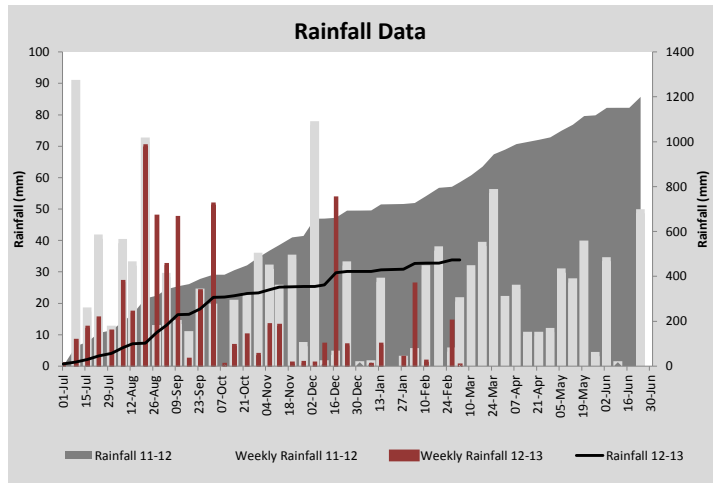
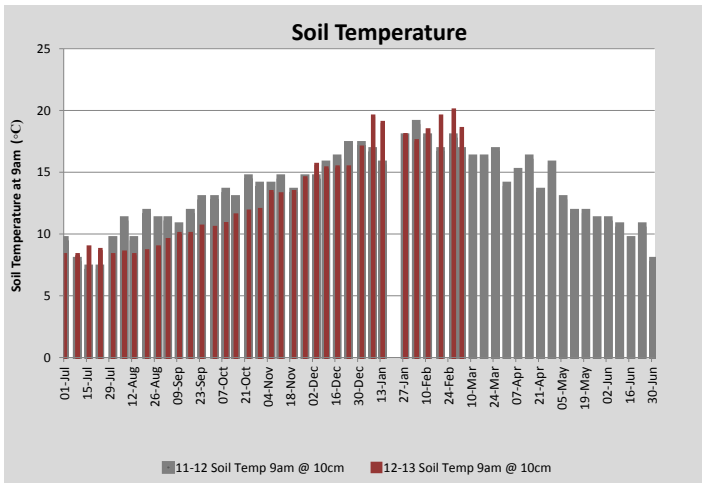
MILK PRODUCTION	Last Week	This Week	Variation
No cows in milk (vat)	246	246	0.00
Litres per cow	16.4	16.2	0.20
% Fat	4.36	4.49	0.13
% Protein	3.24	3.25	0.01
MS/cow/day	1.25	1.25	0.00
MS/ha/day	2.25	2.17	0.09
BMCC	183	182	1.00
Average Liveweight (kg)			
	Budget	To Date	Variation
Total Milk Production (kgMS)	103912	86672	83%
MS/ha YTD	928	774	-154



Last 7 days					
Milkers Diet	kg DM	ME	CP	NDF	\$/cow
Pasture Intake	7.0	11.0	0.0	0.0	0.0
Concentrates	5.0	11.0	0.0	0.0	0.0
Silage	1.5	8.5	0.0	0.0	0.0
Grazed forage	0.0	0.0	0.0	0.0	0.0
Other feeds	3.5	10.0	0.0	0.0	0.0
Total	17	179.8	0	0	0
Target	17		0	0	0



Gruner Kale Crop on the run-off for dry cow winter feed



Analysis			
Expected growth rate next 7 days (kgDM/ha/day)	15	Target Leaf Grazing Stage	3.0
Total Demand from Pasture (kgDM/ha/day)	14	Predicted APC 7 days time	1795
APC balance (kgDM/ha/day)	1	Predicted APC Change	7.9

Discussion

The majority of the rain-fed paddocks have shown negative growth this week. This is probably a combined effect of a slight over-estimate of feed last week from measuring in the rain, and an actual reduction in dry matter present as a result of the rain and subsequent hot weather composting some of the standing hollow dry matter. The CDAX can be prone to sensors becoming blocked with dirt in muddy conditions meaning regular wiping of sensors (between paddocks) is required to maintain maximum sensor accuracy. We will maintain a 28-30 day rotation on the irrigated pasture and have started slowly break feeding dry cows through some of the rain-fed paddocks which still have some cover available. Addition of the palm kernel/almond hull (70/30) mix to the milkers diet during the week has helped hold rotation and extend silage reserves and we have found it especially useful to supplement the young stock (R1&R2). We will remove the mix from the milkers diet this week (replacing it with silage) and use the remainder of the load for the young stock. We will get our final pregnancy check done early next week and are planning to dry off more cows in the next 7 days to further reduce feed demand.

4 March 2013

