

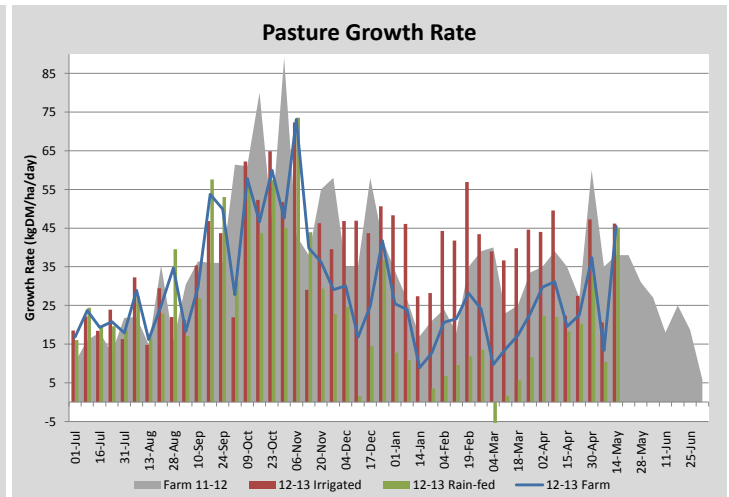
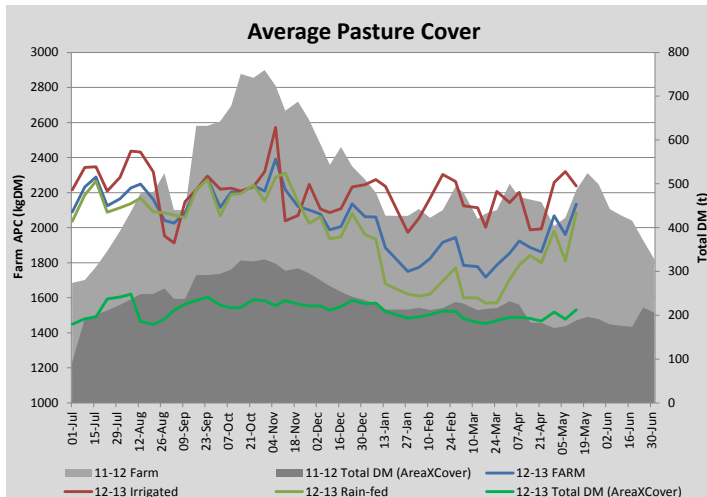
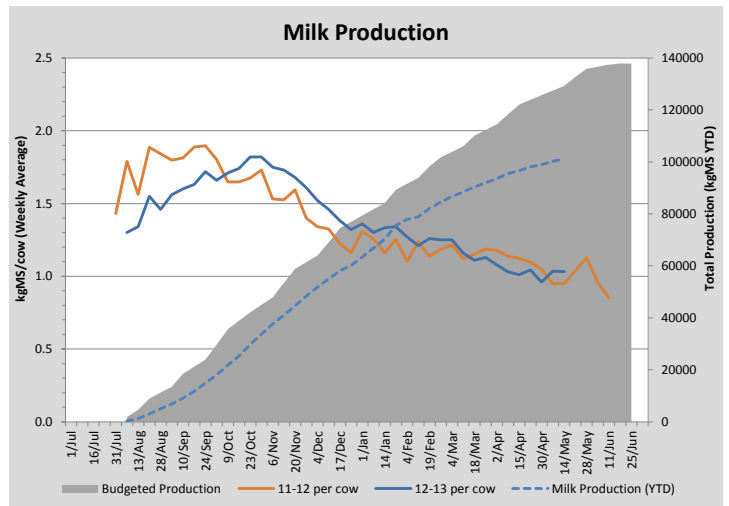
## Key Summary Points

- 1** Average pasture cover has increased over the past week to 2130kgDM/ha due to recent rainfall and increased soil temperature
- 2** Extra work being completed at the moment includes the development of some under-cover stand off area for springer mobs during calving, utilising empty sheds near the dairy
- 3** Key focuses for this week are to slow rotation on the dairy platform and build cover further, dry off all remaining milkers and draft off low condition score cows for preferential feeding

PASTURE INFORMATION	Farm			Irrigated			Rain-fed		
	Last Week	This Week	Variation	Last Week	This Week	Variation	Last Week	This Week	Variation
Grazed milking area (ha)	97.3	99.4	2.0	28.7	33.0	4.31	68.6	66.4	2.27
Rotation Length (days)	57	58		57	41		57	74	
Grazing allocation per day (ha)	1.7	1.7	0.00	0.5	0.8	0.30	1.2	0.9	0.30
Average time since last grazed (days)	44	43	-1	30	38	-8	50	45	-5
Leaf appearance rate (days per leaf)	16	15	-1	15	15	0	16	15	-1
Average Pasture Cover (kgDM/ha)	1961	2134	173	2320	2238	-82	1810	2081	271
Pasture Growth Rate (kgDM/ha/day)	13	45	32	21	46	26	10	45	35
Post Grazing Biomass (kgDM/ha)	1400	1550	150						
Nitrogen applied YTD (kgN/ha)	250	254	3	0	3	3	0	0	0

\*Please note all pasture calculations detailed above are based on the current Grazed Milking Area

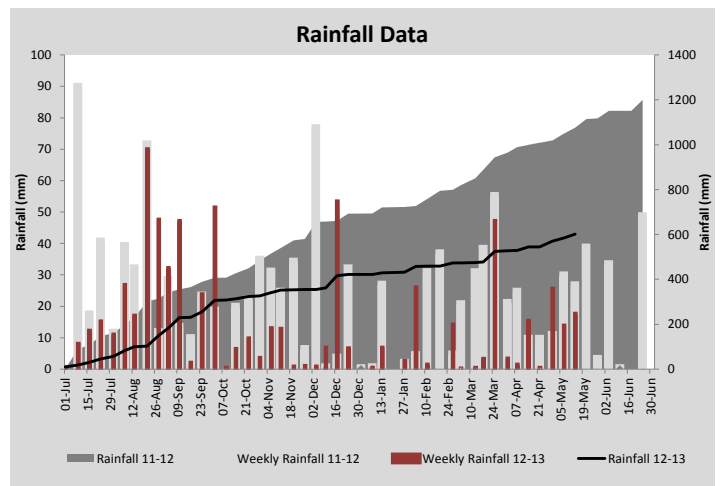
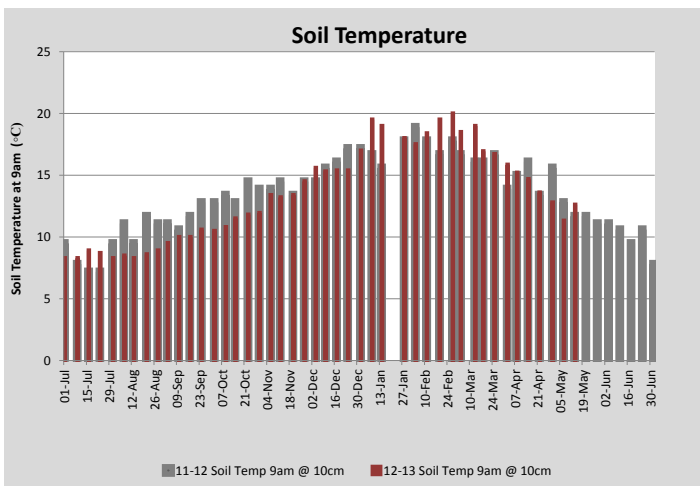
MILK PRODUCTION	Last Week	This Week	Variation
No cows in milk (vat)	160	160	0.00
Litres per cow	12.5	12.5	0.07
% Fat	4.74	4.56	0.18
% Protein	3.56	3.67	0.11
MS/cow/day	1.04	1.03	0.00
MS/ha/day	1.15	1.47	0.33
BMCC	176	192	16.00
Average Liveweight (kg)			
	Budget	To Date	Variation
Total Milk Production (kgMS)	129255	101158	78%
MS/ha YTD	1154	903	-251



Last 7 days					
Milkers Diet	kg DM	ME	CP	NDF	\$/cow
Pasture Intake	13.5	11.0	0.0	0.0	0.0
Concentrates	3.5	11.0	0.0	0.0	0.0
Silage	0.0	0.0	0.0	0.0	0.0
Grazed forage	0.0	0.0	0.0	0.0	0.0
Other feeds	0.0	0.0	0.0	0.0	0.0
<b>Total</b>	<b>17</b>	<b>187</b>	<b>0</b>	<b>0</b>	<b>0</b>
<b>Target</b>	<b>17</b>		<b>0</b>	<b>0</b>	<b>0</b>



Doug Frankcombe helping to keep the R2 calm as they are freeze-branded



Analysis			
Expected growth rate next 7 days (kgDM/ha/day)	25	Target Leaf Grazing Stage	3.0
Total Demand from Pasture (kgDM/ha/day)	21	Predicted APC 7 days time	2160
APC balance (kgDM/ha/day)	4	Predicted APC Change	26.8

## Discussion

Average cover has increased to 2130kgDM/ha (near target of 2200kgDM/ha) this week with better than expected growth rates due to recent rainfall and an increase in soil temperature. Pasture cover readings may have been slightly influenced by wet conditions during measurement (potentially over-estimating pasture covers). The second round of the More Milk From Forages (MMFF) trial finished on Sunday (12th) and so we are planning to dry off all the remaining milkers on Monday (20th). Total milksolids for this season are expected to be on par with this time last year, but below budget. The main factors influencing production below budget this season were the cool, dry spring and delayed irrigation start up associated with the commissioning of the new centre pivot. A full season summary will be prepared at the end of this season. Supplementary feed for the dry period is fairly limited however we have 10.5 ha of kale on the run-off block which is progressing well. Paddocks 19 and 20 are experiencing heavy browsing pressure from wallabies, explaining why little growth has occurred in these paddocks for the past few weeks

# 14 May 2013

