

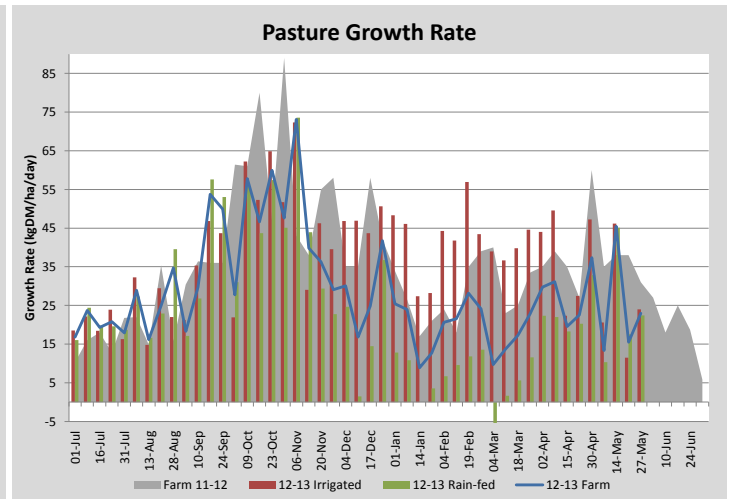
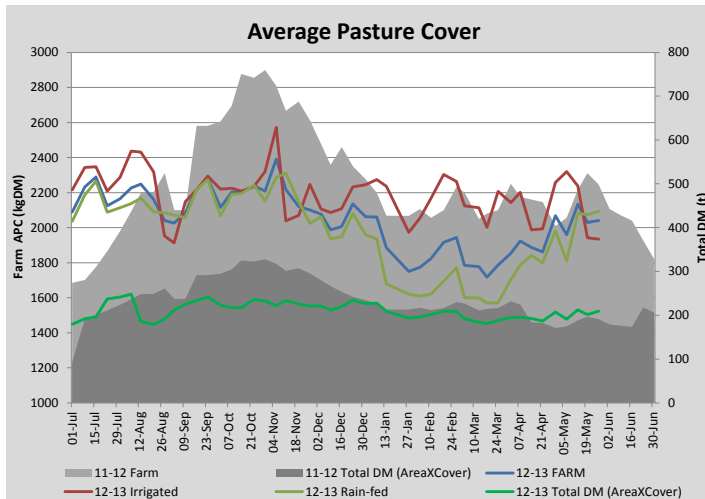
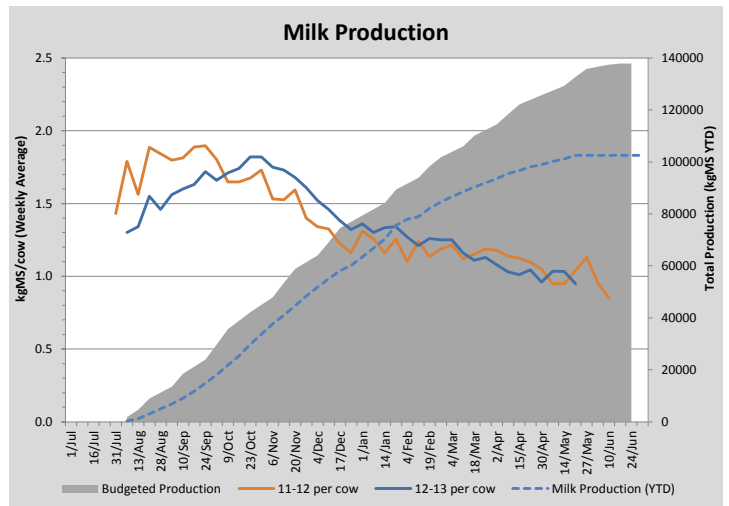
Key Summary Points

- 1** Average pasture covers have held despite a high grazing demand on the milking platform the last 7 days (R1,R2 + dry cows)
- 2** All dry cows have been conditioned scored and sorted into herds based on feeding demand/required condition gain
- 3** Soil temperatures are still reasonable and pastures are still growing

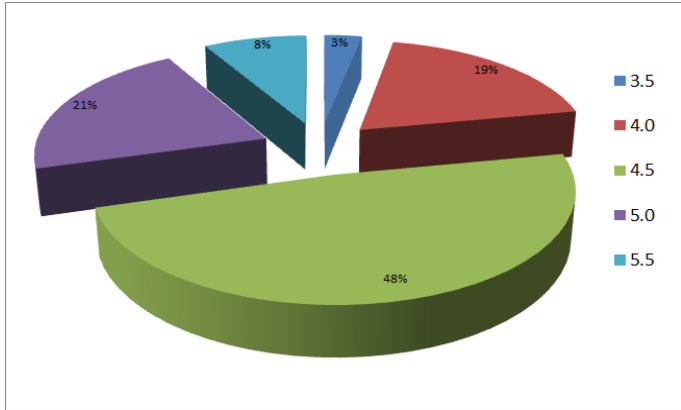
PASTURE INFORMATION	Farm			Irrigated			Rain-fed		
	Last Week	This Week	Variation	Last Week	This Week	Variation	Last Week	This Week	Variation
Grazed milking area (ha)	99.4	102.6	3.2	33.0	34.9	1.88	66.4	67.7	1.31
Rotation Length (days)	58	80		41	106		74	71	
Grazing allocation per day (ha)	1.7	1.3	0.42	0.8	0.3	0.47	0.9	1.0	0.05
Average time since last grazed (days)	43	50	7	38	40	-2	45	55	10
Leaf appearance rate (days per leaf)	16	16	0	16	16	0	16	16	0
Average Pasture Cover (kgDM/ha)	2030	2040	10	1941	1935	-6	2074	2094	20
Pasture Growth Rate (kgDM/ha/day)	16	23	7	11	24	12	18	22	5
Post Grazing Biomass (kgDM/ha)	1400	1300	100						
Nitrogen applied YTD (kgN/ha)	254	254	0	0	0	0	0	0	0

*Please note all pasture calculations detailed above are based on the current Grazed Milking Area

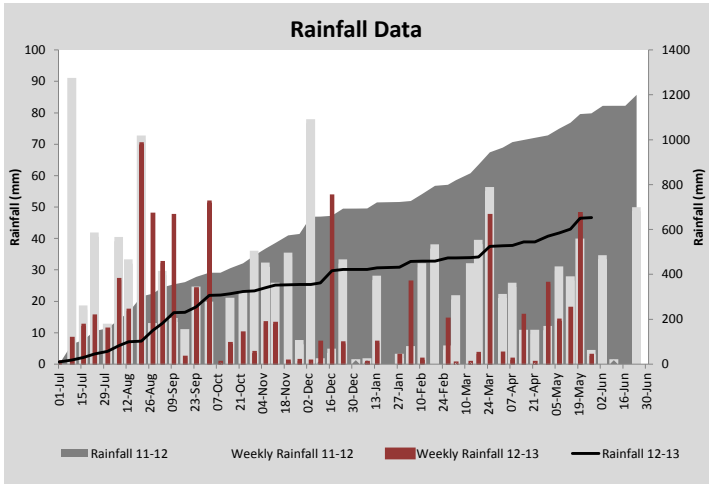
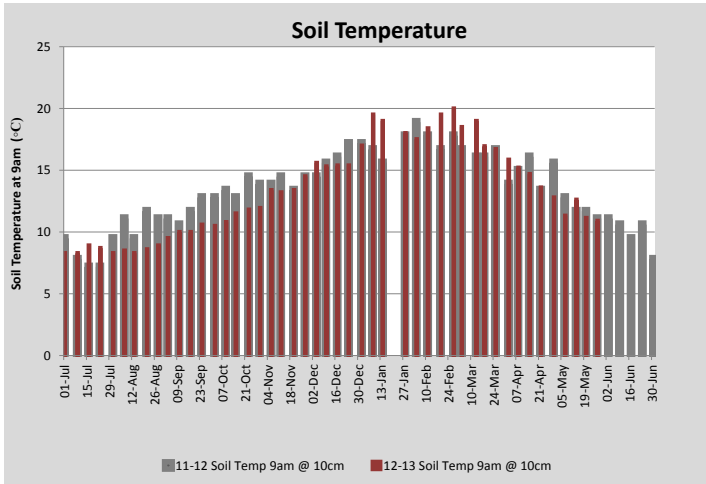
MILK PRODUCTION	Last Week	This Week	Variation
No cows in milk (vat)	160	0	160.00
Litres per cow	11.0	#N/A	#N/A
% Fat	4.75	#N/A	#N/A
% Protein	3.74	#N/A	#N/A
MS/cow/day	0.95	#N/A	#N/A
MS/ha/day	1.36	#N/A	#N/A
BMCC	192	#N/A	#N/A
Average Liveweight (kg)			
	Budget	To Date	Variation
Total Milk Production (kgMS)	135831	102526	75%
MS/ha YTD	1213	915	-297



Last 7 days					
Milkers Diet	kg DM	ME	CP	NDF	\$/cow
Pasture Intake	0.0	0.0	0.0	0.0	0.0
Concentrates	0.0	0.0	0.0	0.0	0.0
Silage	0.0	0.0	0.0	0.0	0.0
Grazed forage	0.0	0.0	0.0	0.0	0.0
Other feeds	0.0	0.0	0.0	0.0	0.0
Total	0	0	0	0	0
Target	0		0	0	0



Current Cow Condition



Analysis			
Expected growth rate next 7 days (kgDM/ha/day)	15	Target Leaf Grazing Stage	3.0
Total Demand from Pasture (kgDM/ha/day)	14	Predicted APC 7 days time	2048
APC balance (kgDM/ha/day)	1	Predicted APC Change	7.9

Discussion

Average pasture covers have held the last 7 days. For the coming weeks we will have roughly half of our dry cows (167) and our R1 on the milking platform with the remaining stock being fed on the runoff. We will start feeding off the kale crop later this week and will transition the cows gradually onto the diet for the first week. Their initial diet will consist of 2-3kgDM/cow/day kale, 3kgDM/cow/day straw and 4kgDM/cow/day of grass. Grazing time on the kale will be used to control intakes initially. Intakes of kale are likely to increase to up to 60% of the diet as cows become accustomed. We estimate we have 70tDM of kale available which should last 60 days. All dry cows were conditioned scored at dry off. The current range (see pie chart above) and average of the herd condition (4.6) is slightly lower than ideal, but with an early dry off date, condition at calving should be closer to targets (5 for mature cows and 5.5 for first and second lactation). To help achieve this we have split the cows into three feeding groups based on a combination of current condition and projected calving dates. The small number of 3.5 score cows will be offered ad lib pasture intake to maximise condition gain. These cows are mostly late calvers meaning they will have additional time for condition gain before calving. The other cows have been split into a 'thin' herd which is generally greater than 0.5 condition away from calving targets and another herd which is within 0.5 condition score of targets or has additional time for condition gain based on calving date. Our R2 (85) have come through the dry summer well and are already at pre-calving target weights.

27 May 2013

