

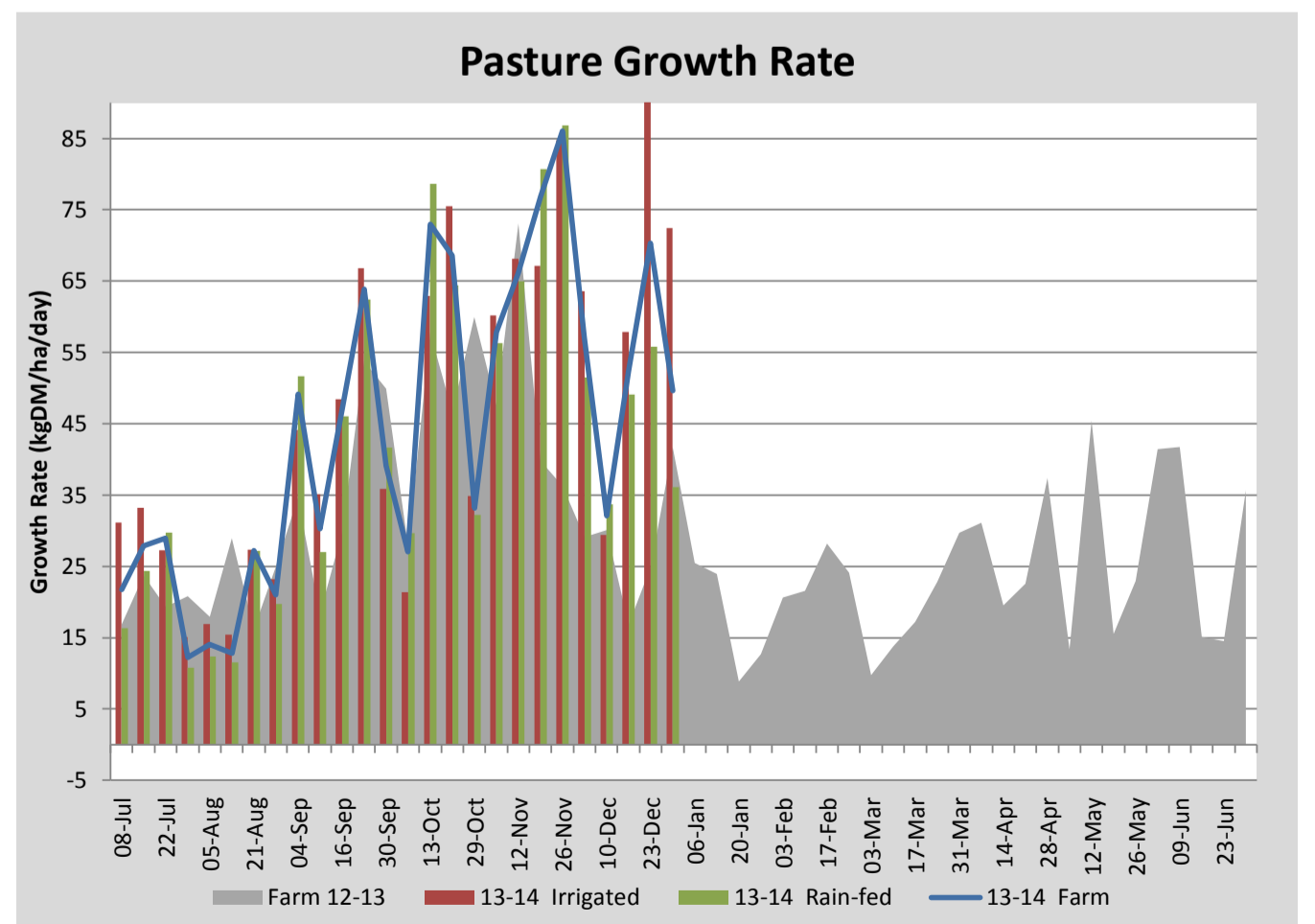
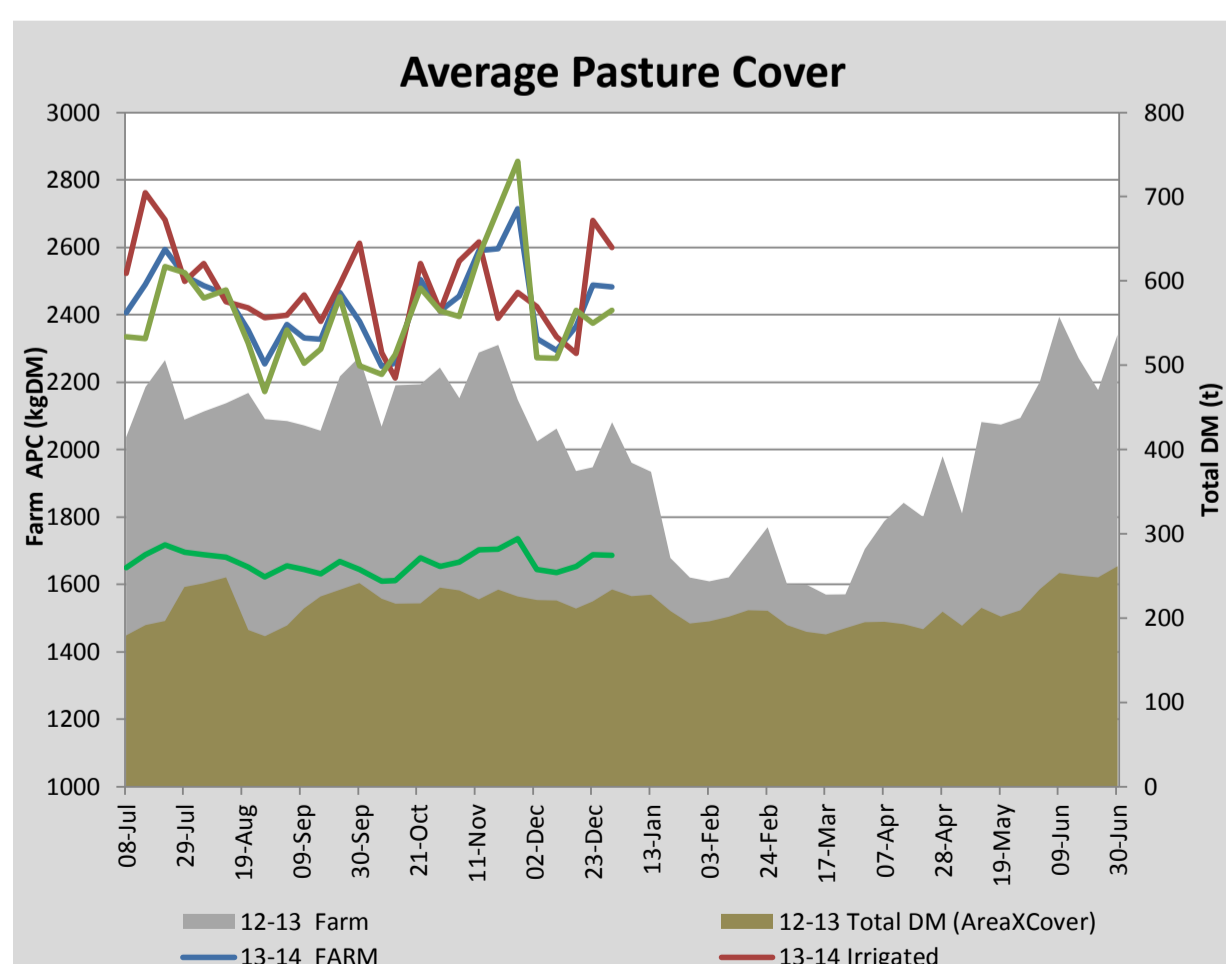
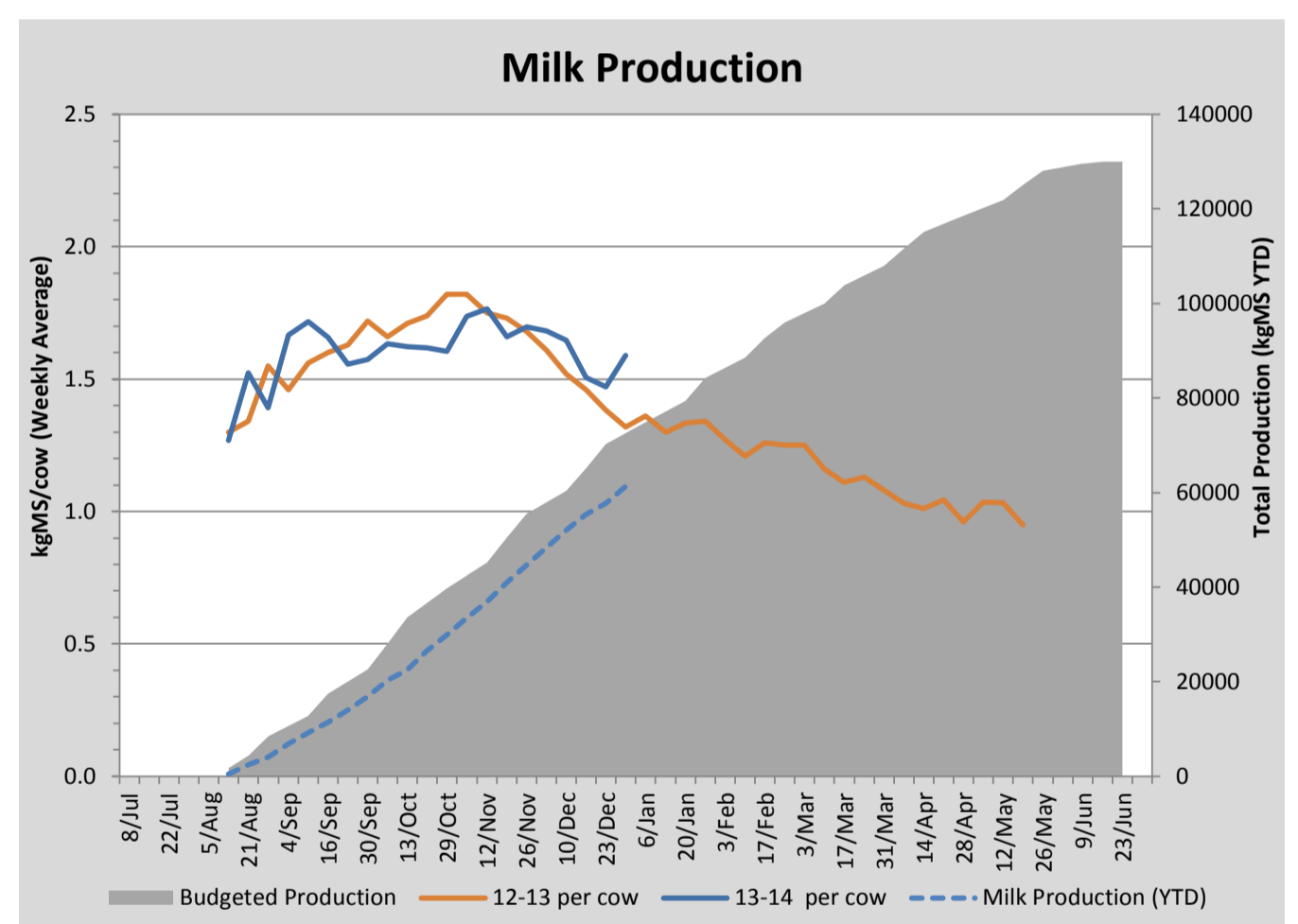
Key Summary Points

- 1** Average pasture cover has held this week at close to 2500kgDM/ha
- 2** Per cow MS production has increased this week due to better pasture quality
- 3** Focus for the coming week is to continue to manage residuals particularly in cocksfoot based pastures, pre-graze topping and post grazing slashing where required

PASTURE INFORMATION	Farm			Irrigated			Rain-fed		
	Last Week	This Week	Variation	Last Week	This Week	Variation	Last Week	This Week	Variation
Grazed milking area (ha)	110.5	110.5	0.0	41.0	41.0	0.0	69.5	69.5	0
Rotation Length (days)	36	35	-1	55	22	-33	30	53	24
Grazing allocation per day (ha)	3.1	3.2	0.1	0.8	1.9	1.2	2.4	1.3	-1.1
Average time since last grazed (days)	30	30	-0	34	29	-6	28	31	3
Leaf appearance rate (days per leaf)	10	10	0	9	9	0	11	11	0
Average Pasture Cover (kgDM/ha)	2488	2482	-6	2679	2600	-79	2375	2412	37
Pasture Growth Rate (kgDM/ha/day)	70	50	-21	95	72	-23	56	36	-20
Post Grazing Biomass (kgDM/ha)	1740	1541	-199						
Nitrogen applied YTD (kgN/ha)	76	76	0	9	0	-9	6	0	-6

*Please note all pasture calculations detailed above are based on the current Grazed Milking Area

MILK PRODUCTION	Last Week	This Week	Variation
Average No. cows in milk (vat)	326	327	1
Litres per cow	20.8	22.0	1.2
% Fat	3.95	4.10	0.15
% Protein	3.15	3.15	0.00
MS/cow/day	1.47	1.59	0.12
MS/ha/day	4.25	4.60	0.36
BMCC	124	145	21
Average Liveweight (kg)	499	499	0
	Budget	To Date	Variation
Total Milk Production (kgMS)	72,583	61,327	84%
MS/ha YTD	648	588	-60

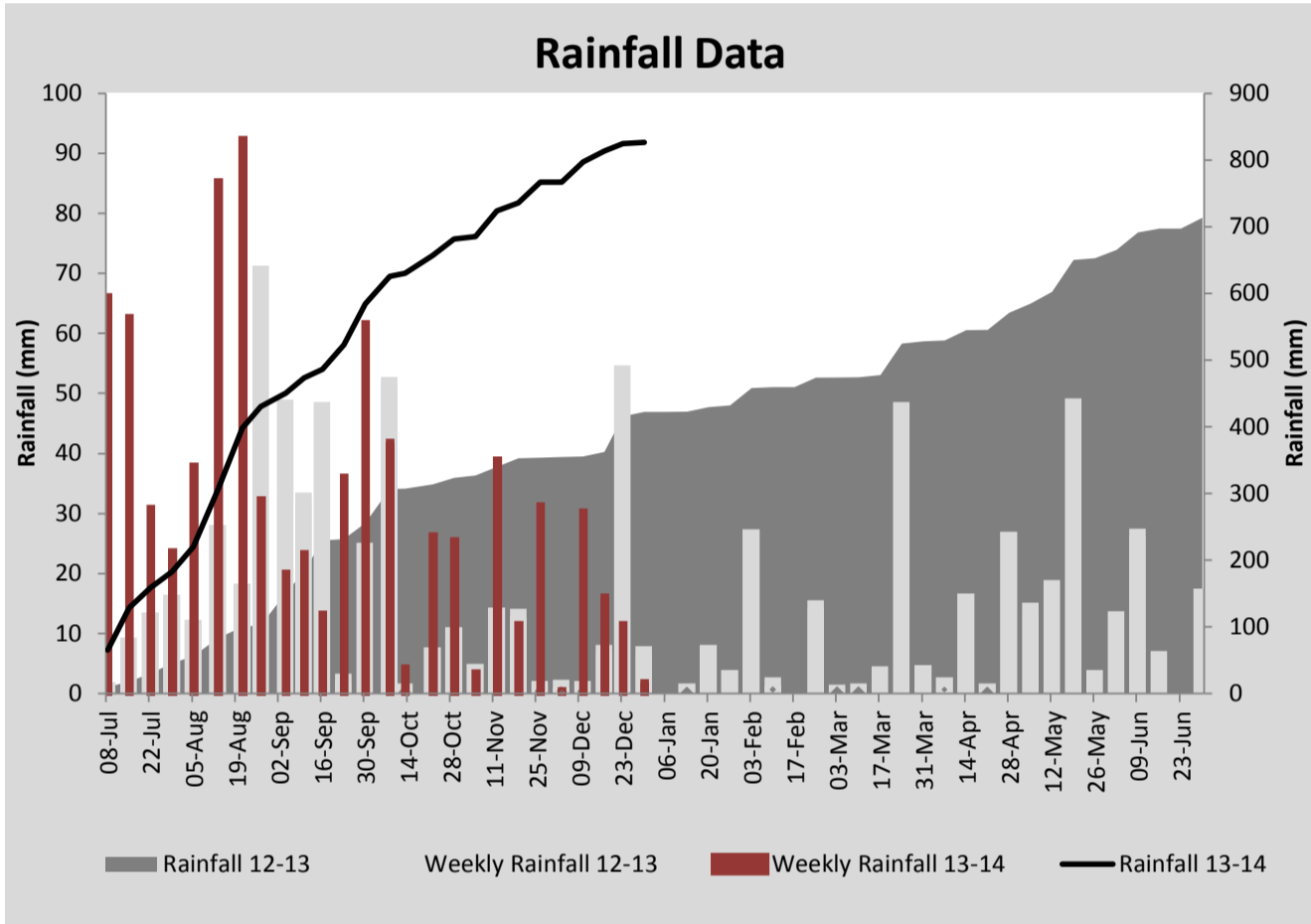
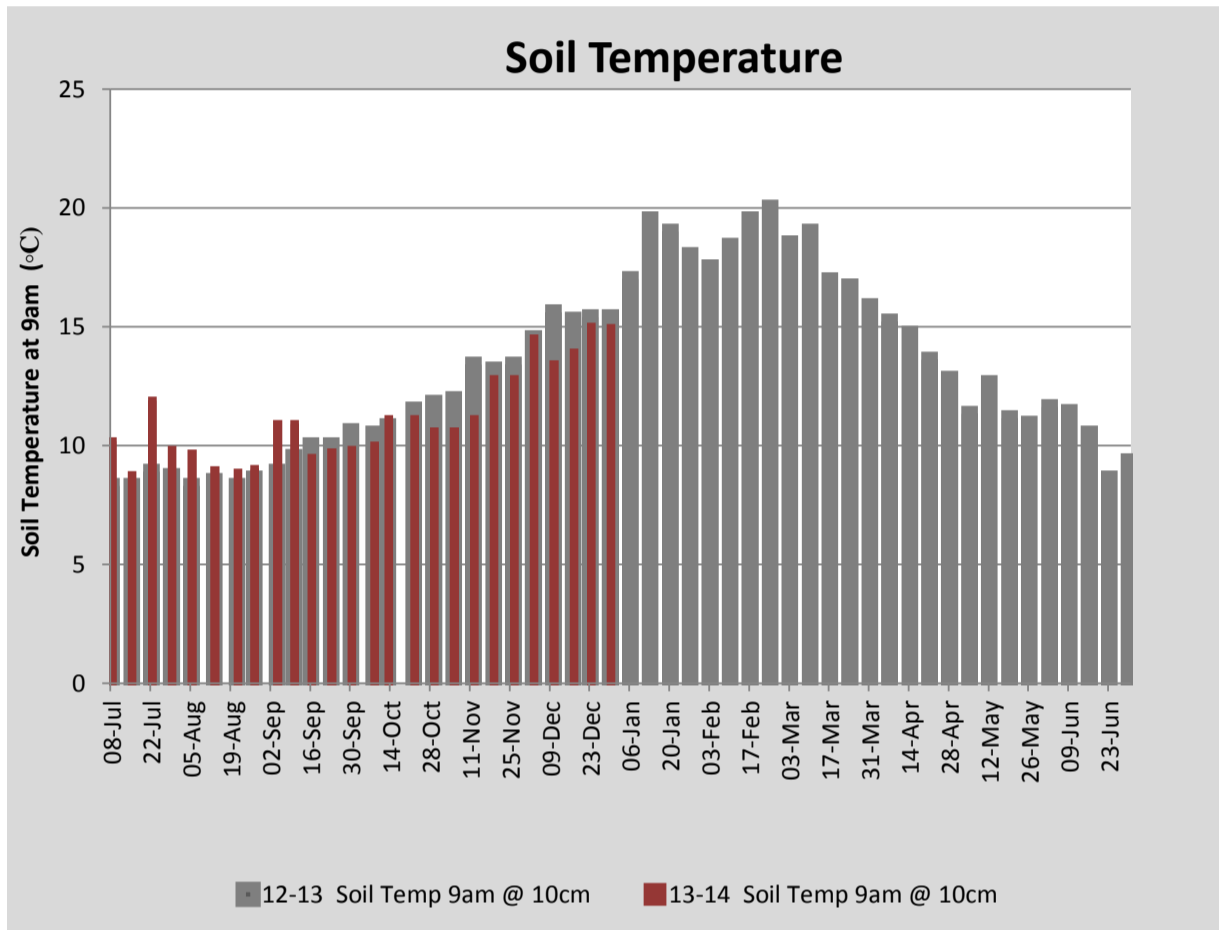


Last 7 days					
Milkers Diet	kg DM	MJ ME	CP (%)	NDF (%)	\$/cow
Pasture Intake	14.8	11.3	20.8	44.1	0.0
Concentrates	3.5	13.0	11.0	21.0	0.0
Silage	0.8	10.5	15.0	49.0	0.0
Grazed forage	0.0	0.0	0.0	0.0	0.0
Other feeds	0.0	0.0	0.0	0.0	0.0
Total	19	220.1	18.8	40.0	0
Target		191	16-18	>33	0

Note: silage nutritional content is estimated based on pasture analysis during silage season, testing will be conducted early in 2014.



Lucerne planted this spring on the run off block



Analysis			
Expected growth rate next 7 days (kgDM/ha/day)	45	Target Leaf Grazing Stage	2.0
Total Demand from Pasture (kgDM/ha/day)	48	Predicted APC 7 days time	2461
APC balance (kgDM/ha/day)	-3	Predicted APC Change	-20.7

Discussion

Per cow MS production has increased this week to 1.59kgMS/cow/day. This increase is a reflection of improved pasture quality as we seem to be getting past the worst of the reproductive growth. Residuals are being managed via pre-graze topping and/or following the milkers with R2 heifers. The irrigated portion of the platform is still growing well at 72kgDM/day while rainfed paddocks have slowed to 39kgDM/day. 10ha of the run off was cut for silage this week yielding approximately 22.5tDM (98 bales). The focus for the coming week to continue to manage residuals via pre graze topping or post grazing slashing where required. Other work being completed on farm at the moment includes fencing and stock water system maintenance.

30 December 2013

