

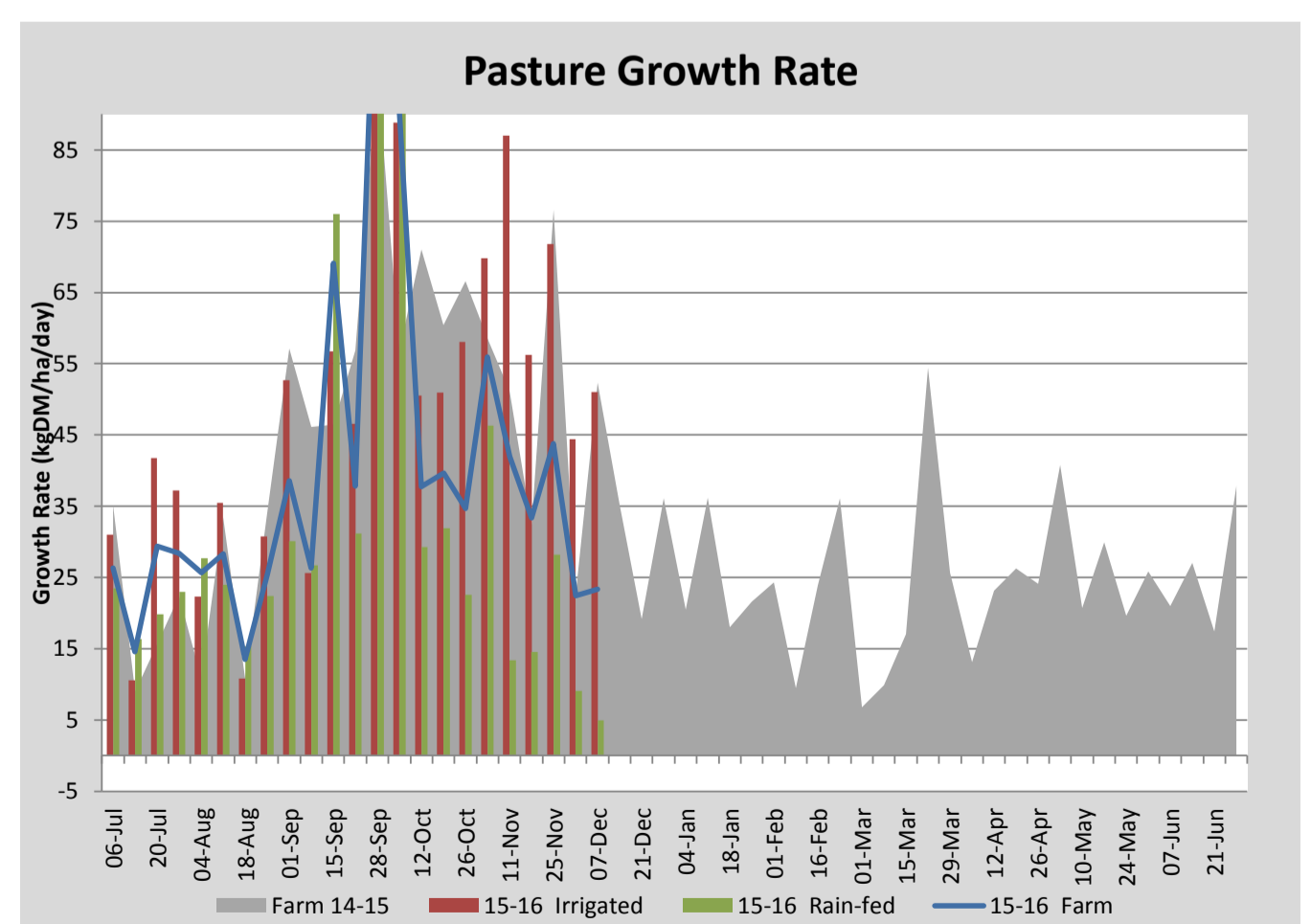
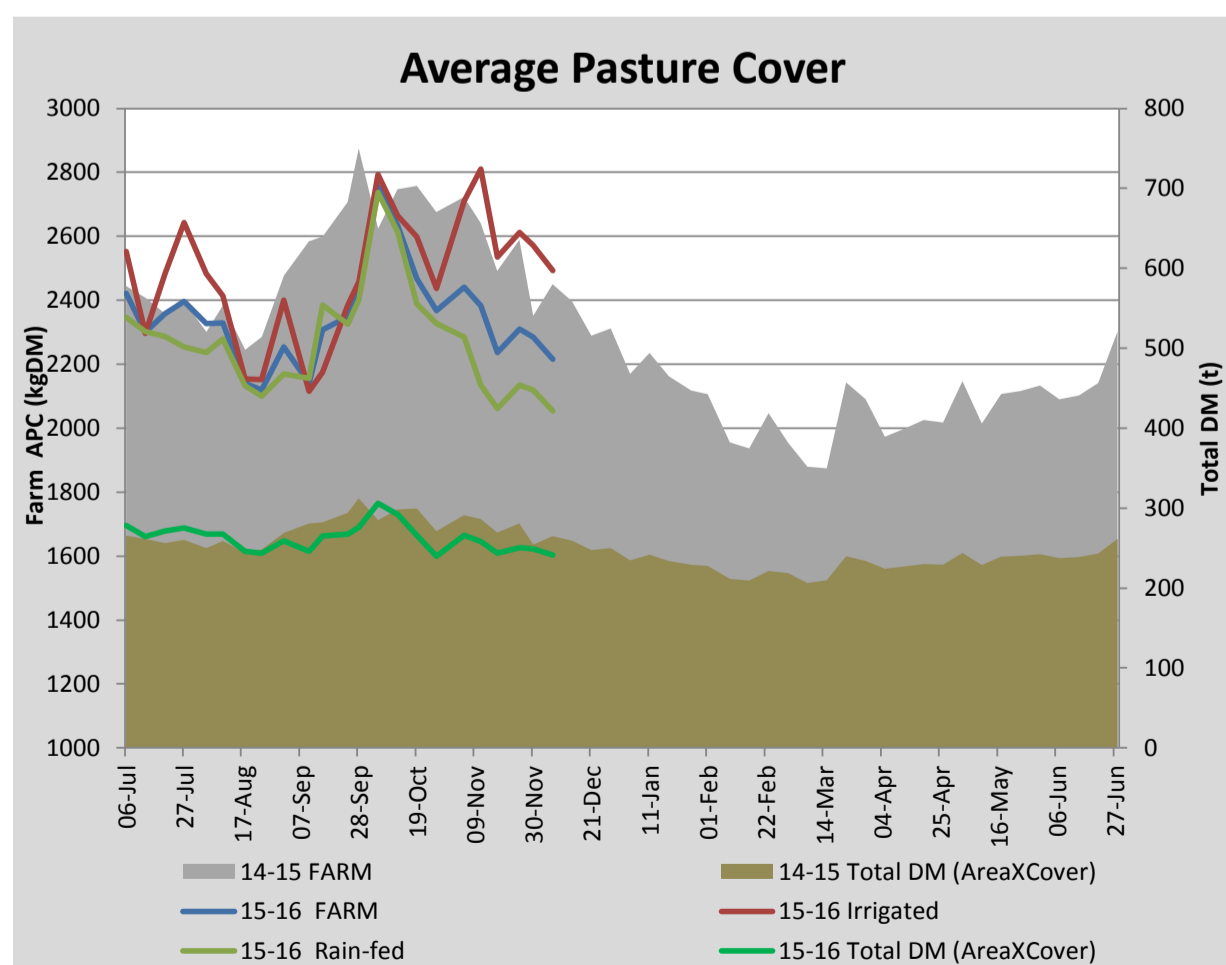
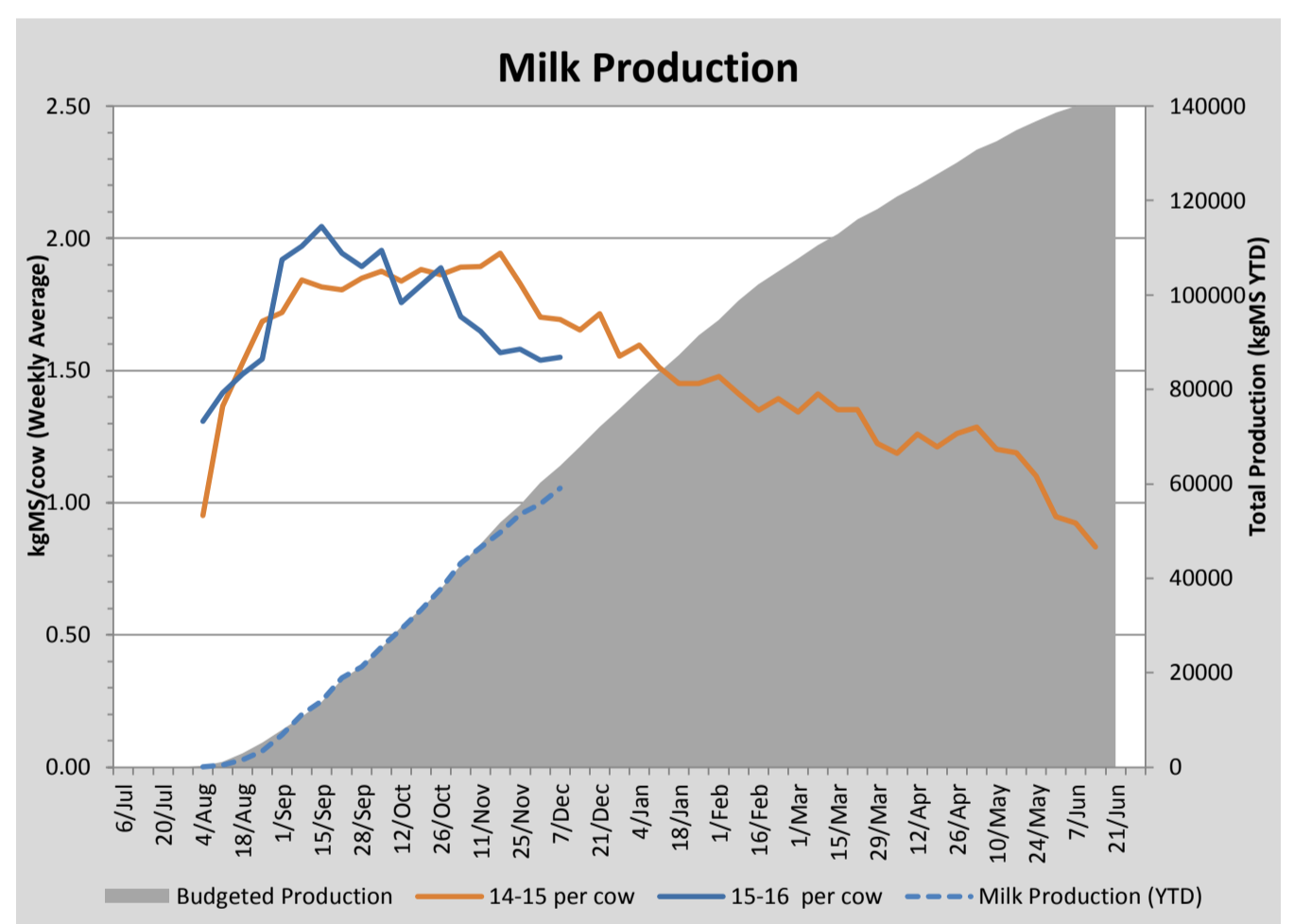
Key Summary Points

- 1** Average pasture cover continues to drop
- 2** Per cow MS production has held as 40 cows have been culled and concentrate allocation has been increased to 6 kg per day
- 3** We will be starting to feed the brassica crops this coming week

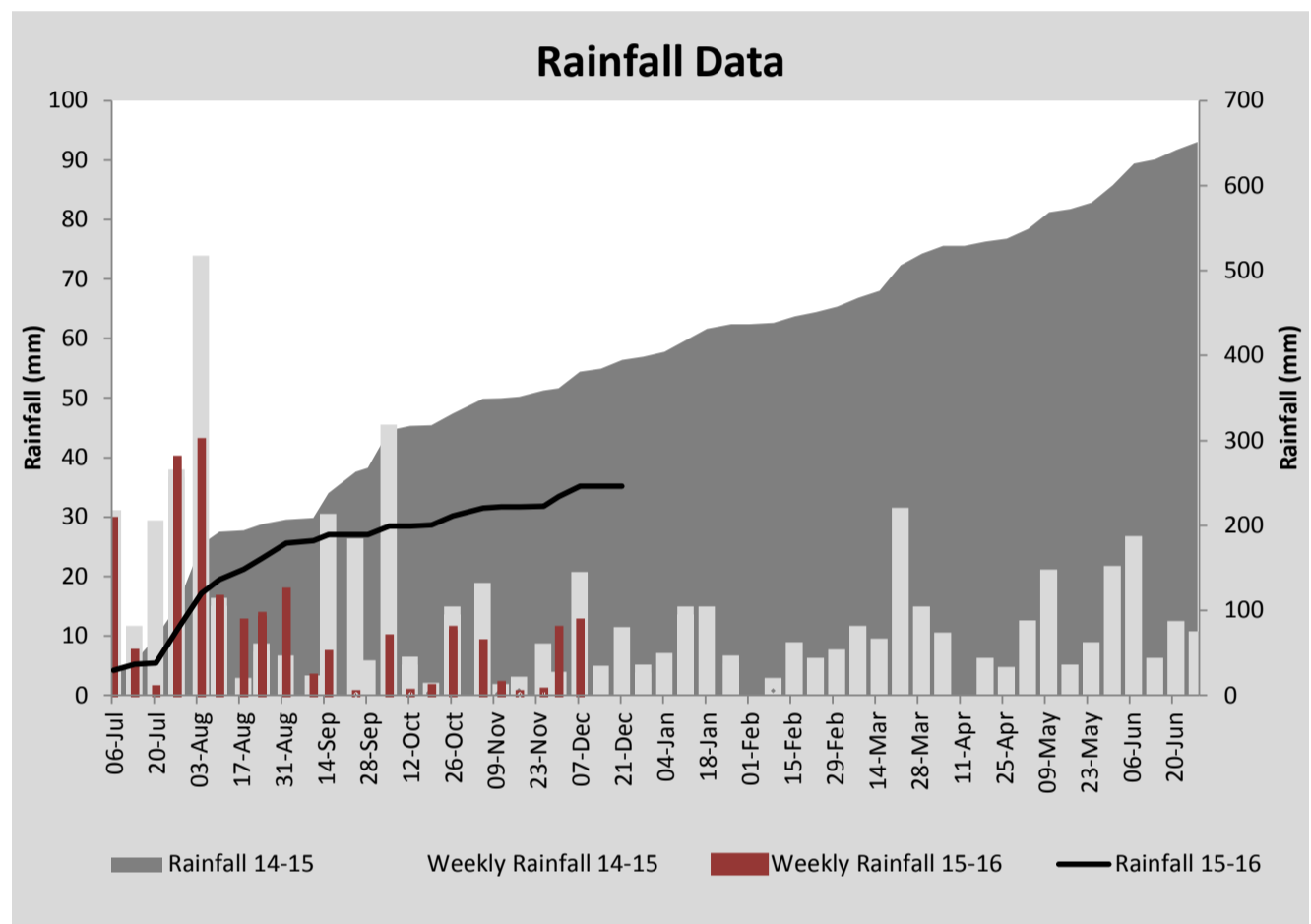
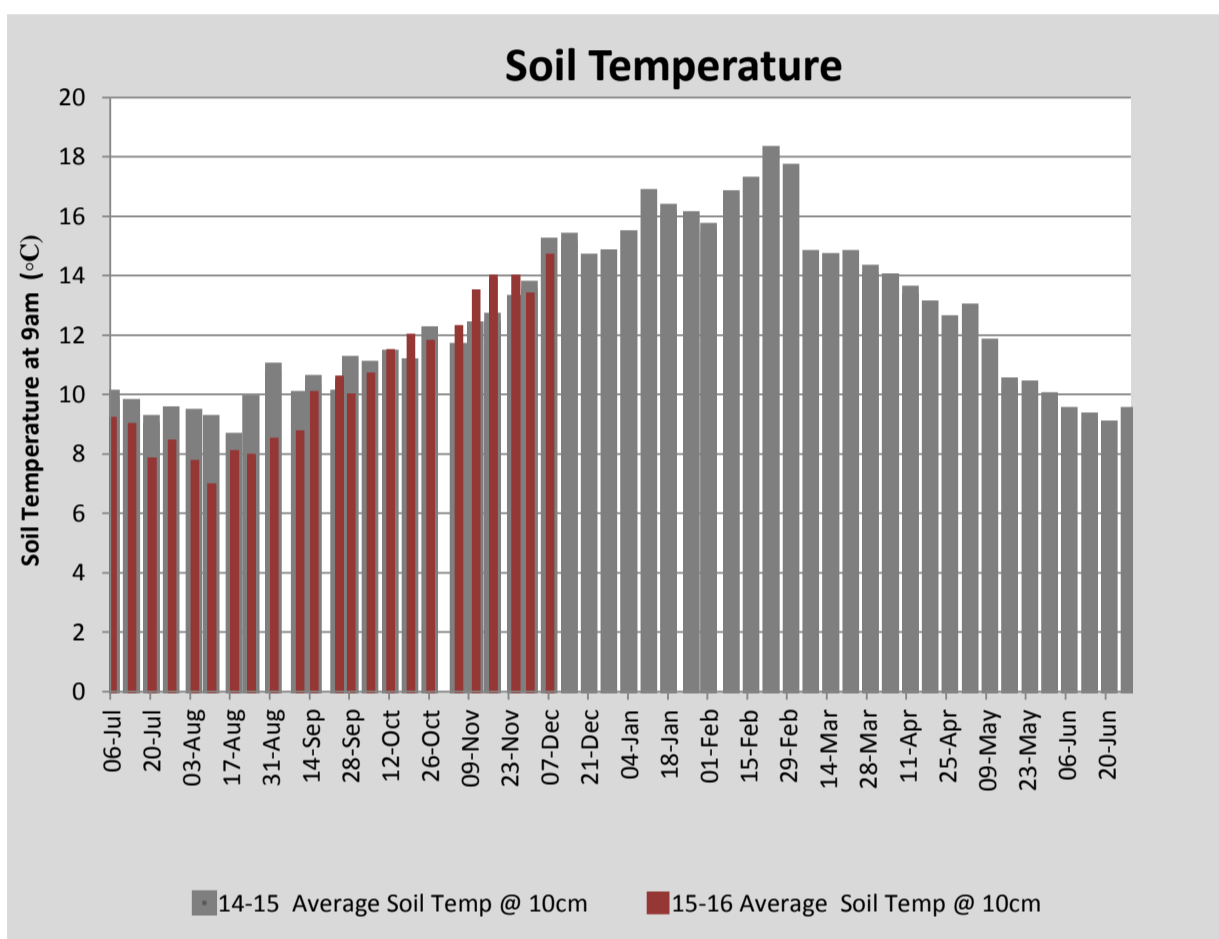
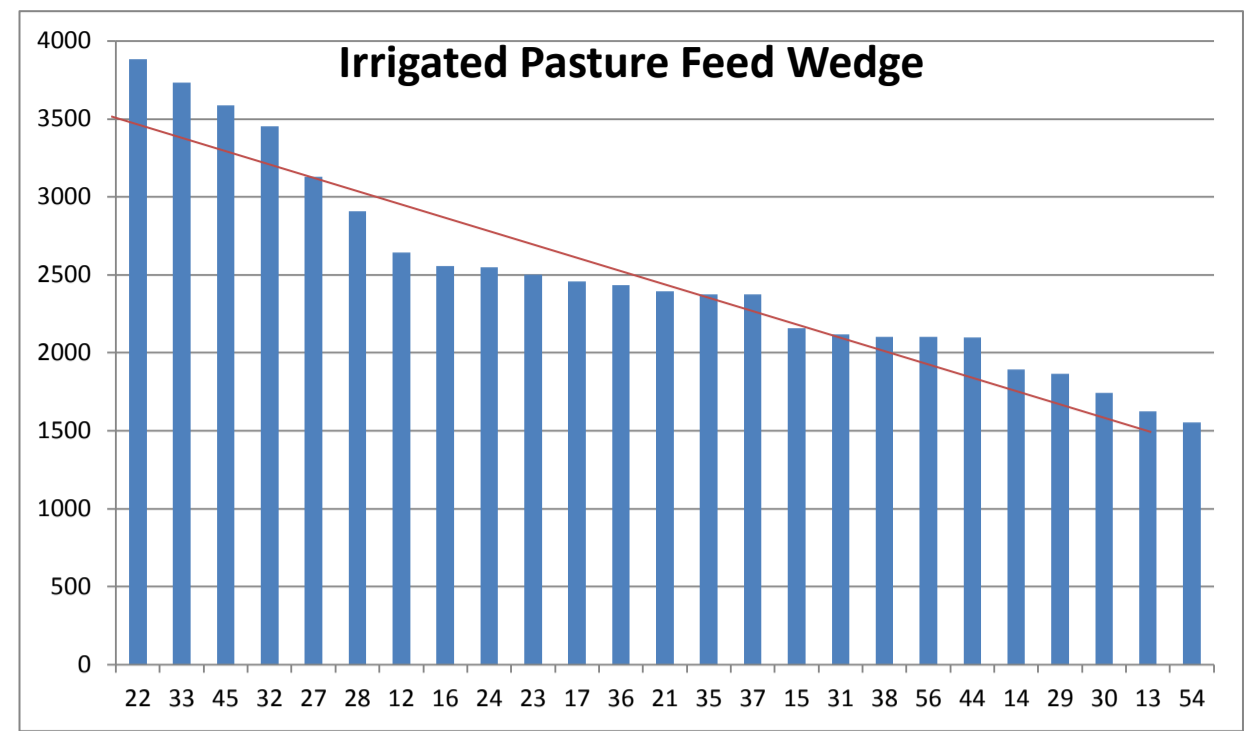
PASTURE INFORMATION	Farm			Irrigated			Rain-fed		
	Last Week	This Week	Variation	Last Week	This Week	Variation	Last Week	This Week	Variation
Grazed milking area (ha)	109.1	109.1	0.0	42.2	40.1	-2.1	66.9	68.9	2
Rotation Length (days)	64	68	4	45	45	0	86	98	12
Grazing allocation per day (ha)	1.7	1.6	-0.1	0.9	0.9	0.0	0.8	0.7	-0.1
Average time since last grazed (days)	47	56	10	31	35	4	56	69	13
Leaf appearance rate (days per leaf)	13	14	1	11	11	0	14	15	1
Average Pasture Cover (kgDM/ha)	2285	2215	-71	2572	2492	-79	2119	2053	-66
Pasture Growth Rate (kgDM/ha/day)	22	23	1	44	51	7	9	5	-4
Post Grazing Biomass (kgDM/ha)	1450	1450	0						
Nitrogen applied YTD (kgN/ha)	61	61	0	22	0	-22	0	0	0

*Please note all pasture calculations detailed above are based on the current Grazed Milking Area

MILK PRODUCTION	Last Week	This Week	Variation
Average No. cows in milk (vat)	319	316	-3
Litres per cow	20.0	20.3	0.3
% Fat	4.37	4.27	-0.10
% Protein	3.41	3.37	-0.04
MS/cow/day	1.54	1.55	0.01
MS/ha/day	4.34	4.34	-0.01
BMCC	171,429	180,667	9,238
Average Liveweight (kg)	0	0	0
	Budget	To Date	Variation
Total Milk Production (kgMS)	63,796	59,087	93%
MS/ha YTD	560	566	6



Last 7 days					
Milkers Diet	kg DM	MJ ME	CP (%)	NDF (%)	\$/cow
Pasture Intake	10.0	0.0	0.0	0.0	0.0
Concentrates	6.0	12.5	16.0	16.5	0.0
Silage	2.0	0.0	0.0	0.0	0.0
Grazed forage	0.0	0.0	0.0	0.0	0.0
Other feeds	0.0	0.0	0.0	0.0	0.0
Total	18	75	5.3	5.5	0
Target		191	16-18	>33	0



Analysis			
Expected growth rate next 7 days (kgDM/ha/day)	19	Target Leaf Grazing Stage	2.5-3.0
Total Demand from Pasture (kgDM/ha/day)	26	Predicted APC 7 days time	2163
APC balance (kgDM/ha/day)	-7	Predicted APC Change	-52.1

Discussion

Average pasture cover fell slightly over the past week (down from 2285 kg DM/ha to 2215) and is expected to continue to fall as dryland growth rates slow (now at 5 kg DM ha/day). Rotation on dryland areas is being extended to approximately 150 days. With the milking herd size reduced to 319 cows we are keeping a close watch on feed supply and production and currently this herd size seems to be sustainable. However, there is potential to reduce herd size by another 20 cows if adequate forage supply becomes too difficult. We intend to start feeding the brassica crops to the milking herd in the next week starting with the pasja and rape crop. Irrigation growth rates have held. All R2 heifers are now back on farm. We are using the R2 heifers to clean up residuals behind the cows where required.

7 December 2015

