

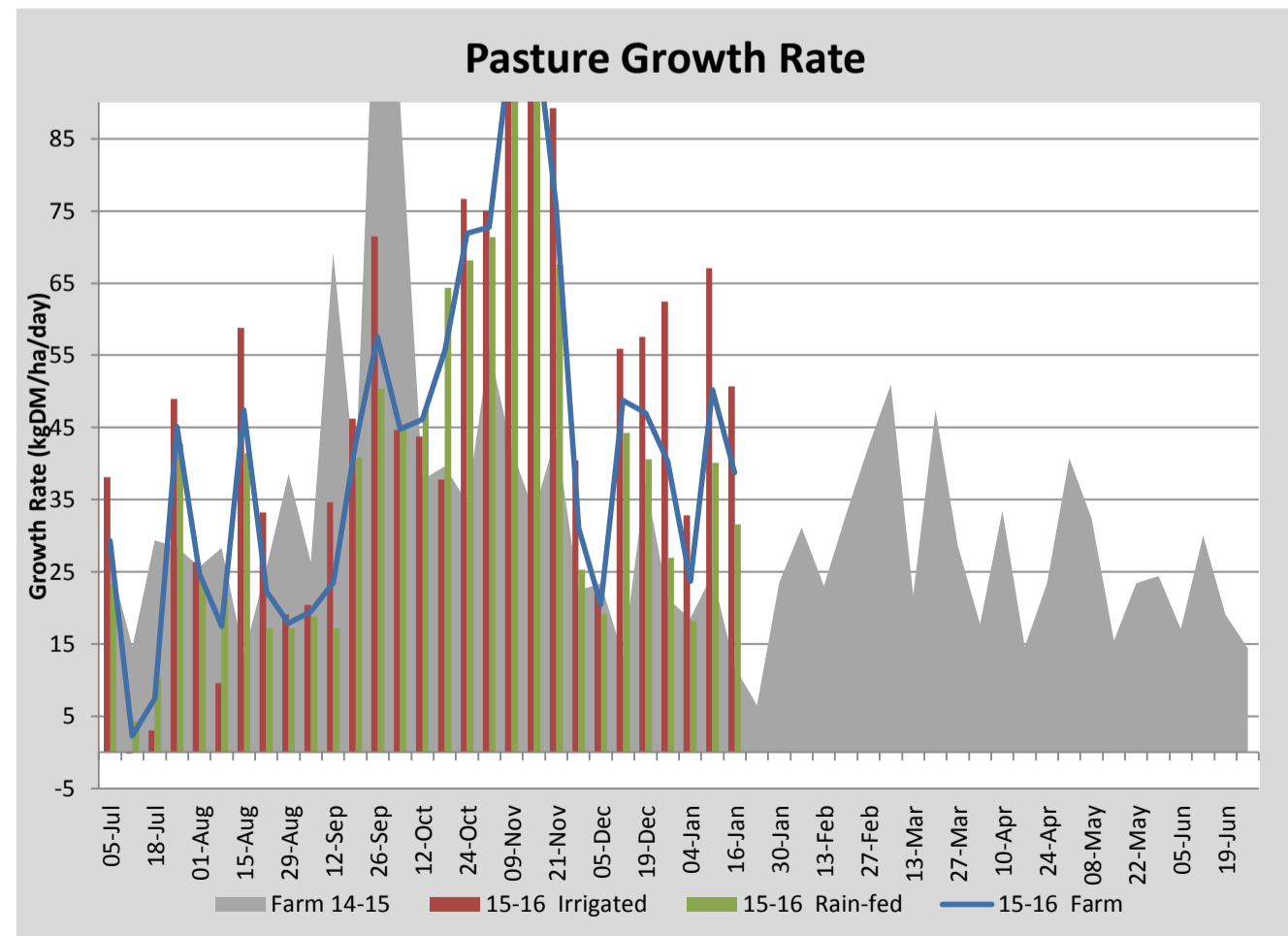
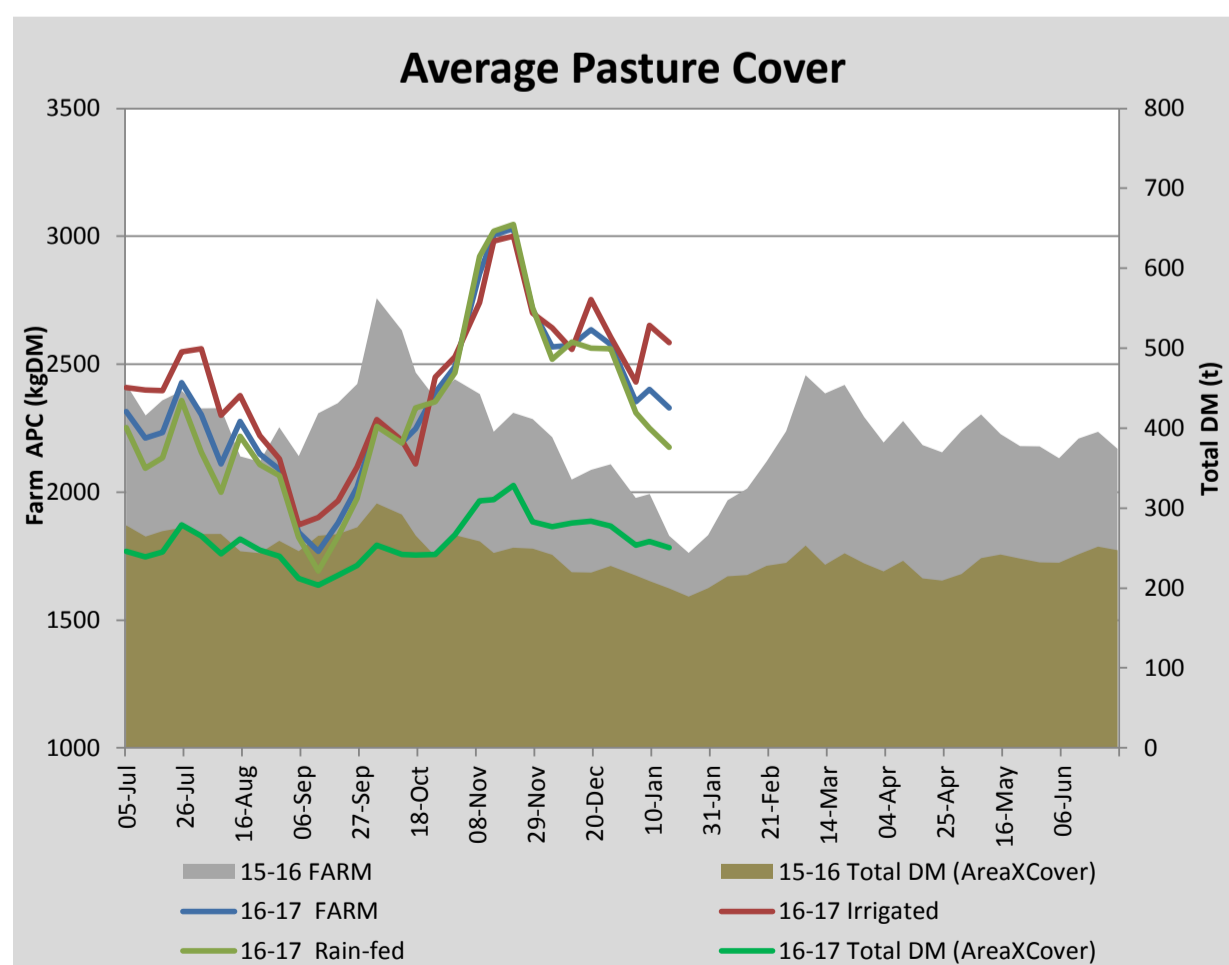
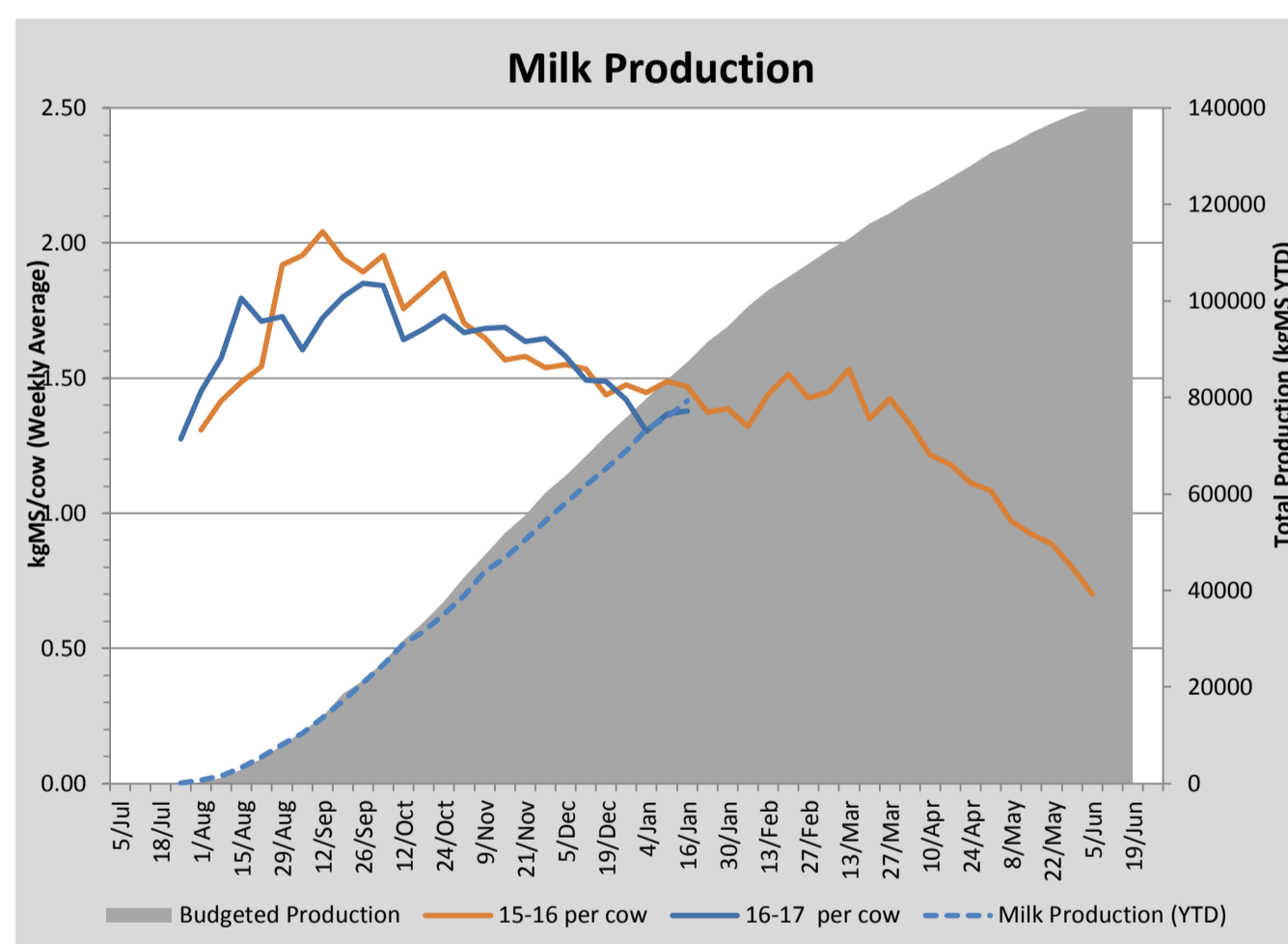
Key Summary Points

- 1 Average pasture cover decreased this week to 2330kgDM/ha
- 2 3ha of the dryland portion of the milking platform was cut for hay this week and a further 3.6ha will be cut for silage next week.
- 3 Key focus for the coming week is to start grazing the turnips, initially allocating at 2kgDM/cow/day.

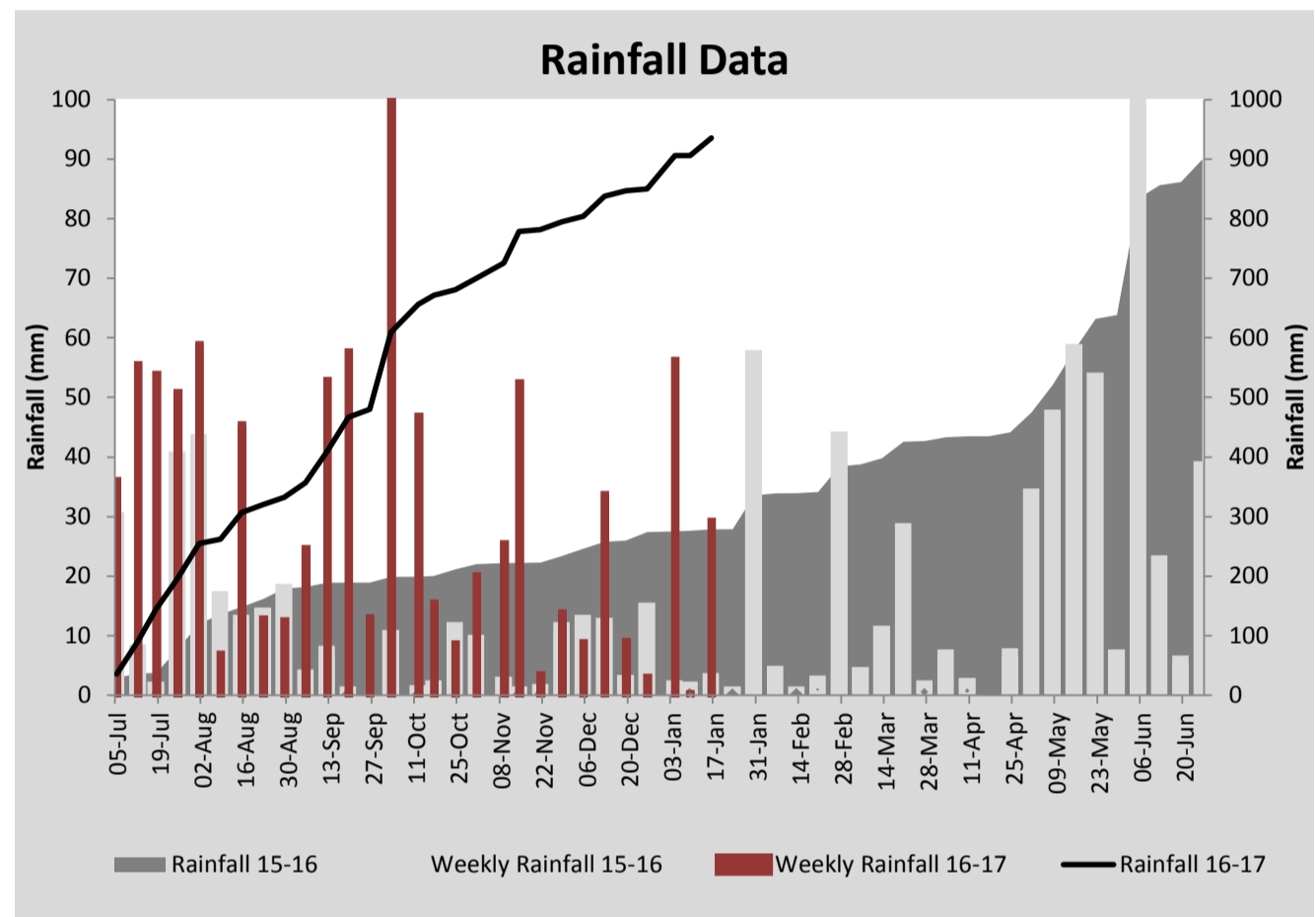
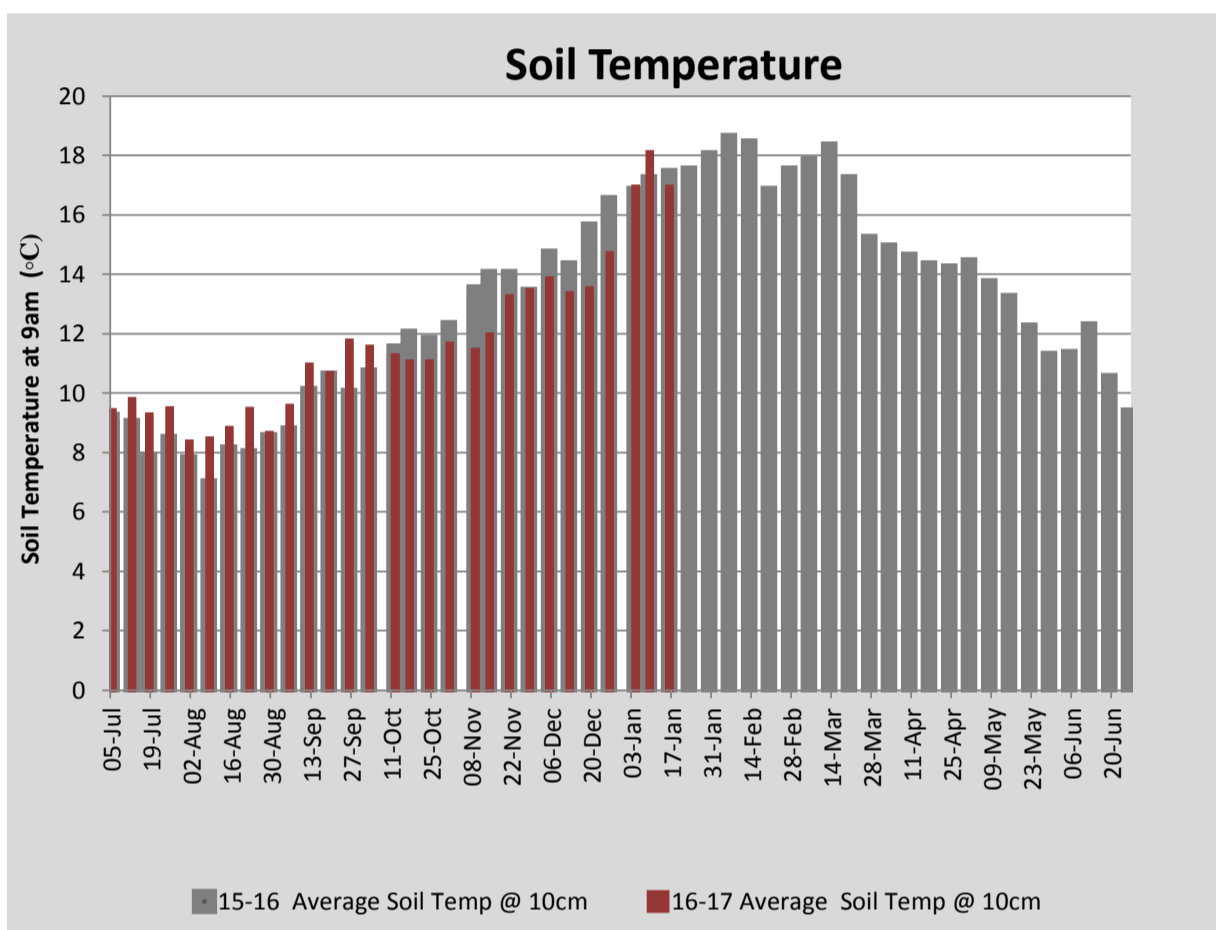
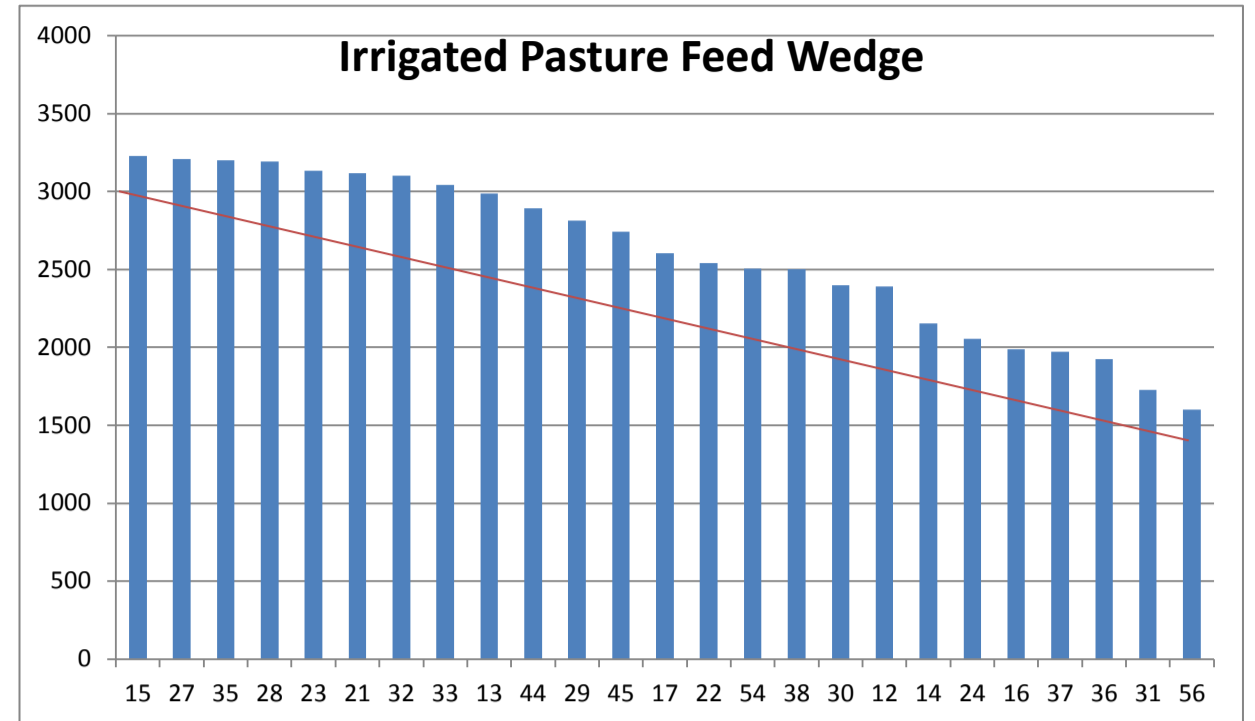
PASTURE INFORMATION	Farm			Irrigated			Rain-fed		
	Last Week	This Week	Variation	Last Week	This Week	Variation	Last Week	This Week	Variation
Grazed milking area (ha)	107.6	107.6	0.0	42.2	40.5	-1.7	65.4	67.1	2
Rotation Length (days)	28	31	3	72	22	-50	20	39	19
Grazing allocation per day (ha)	3.9	3.5	-0.4	0.6	1.8	1.2	3.3	1.7	-1.6
Average time since last grazed (days)	30	37	7	23	33	10	35	40	5
Leaf appearance rate (days per leaf)	10	10	0	10	10	0	10	10	0
Average Pasture Cover (kgDM/ha)	2401	2330	-71	2653	2585	-68	2249	2176	-73
Pasture Growth Rate (kgDM/ha/day)	50	39	-11	67	51	-16	40	32	-9
Post Grazing Biomass (kgDM/ha)	1653	1707	54						
Nitrogen applied YTD (kgN/ha)	147	147	0	0	0	0	0	0	0

*Please note all pasture calculations detailed above are based on the current Grazed Milking Area

MILK PRODUCTION	Last Week	This Week	Variation
Average No. cows in milk (vat)	349	347	-2
Litres per cow	17.3	17.0	-0.4
% Fat	4.52	4.68	0.16
% Protein	3.36	3.43	0.07
MS/cow/day	1.37	1.38	0.01
MS/ha/day	4.22	4.23	0.01
BMCC	120,429	116,000	-4,429
Average Liveweight (kg)	0	0	0
	Budget	To Date	Variation
Total Milk Production (kgMS)	87,300	79,301	91%
MS/ha YTD	766	758	99%



Last 7 days					
Milkers Diet	kg DM	MJ ME	CP (%)	NDF (%)	\$/cow
Pasture Intake	14.1	0.0	0.0	0.0	0.0
Concentrates	2.5	12.9	15.6	20.3	0.0
Silage	0.4	0.0	0.0	0.0	0.0
Grazed forage	0.0	0.0	0.0	0.0	0.0
Other feeds	0.0	0.0	0.0	0.0	0.0
Total	17				0
Target			16-18	>33	0



Analysis			
Expected growth rate next 7 days (kgDM/ha/day)	38	Target Leaf Grazing Stage	2.5-3.0
Total Demand from Pasture (kgDM/ha/day)	42	Predicted APC 7 days time	2297
APC balance (kgDM/ha/day)	-5	Predicted APC Change	-32.5

Discussion

Average pasture cover decreased slightly this week with growth across the platform slowing. Despite slowing pasture growth rates and decreased average pasture cover we have decided to cut 6ha of the milking platform for hay and silage. The aim of this is to improve the quality of the regrowth and better utilise pasture in the paddocks with high covers. To manage this process we will, if required, graze some of the runoff area over the next few weeks. The run-off is currently understocked. We will start grazing the turnip crop this week, feeding them at 2kgDM/cow/day. There is quite a lot of bulb breakdown (approx 10%) in two of the paddocks due to some form of bacterial infection. This is thought to be linked to wind damage which was then followed by effluent irrigation. These paddocks will be prioritised for grazing first, to prevent too much crop loss.

16 January 2017

