

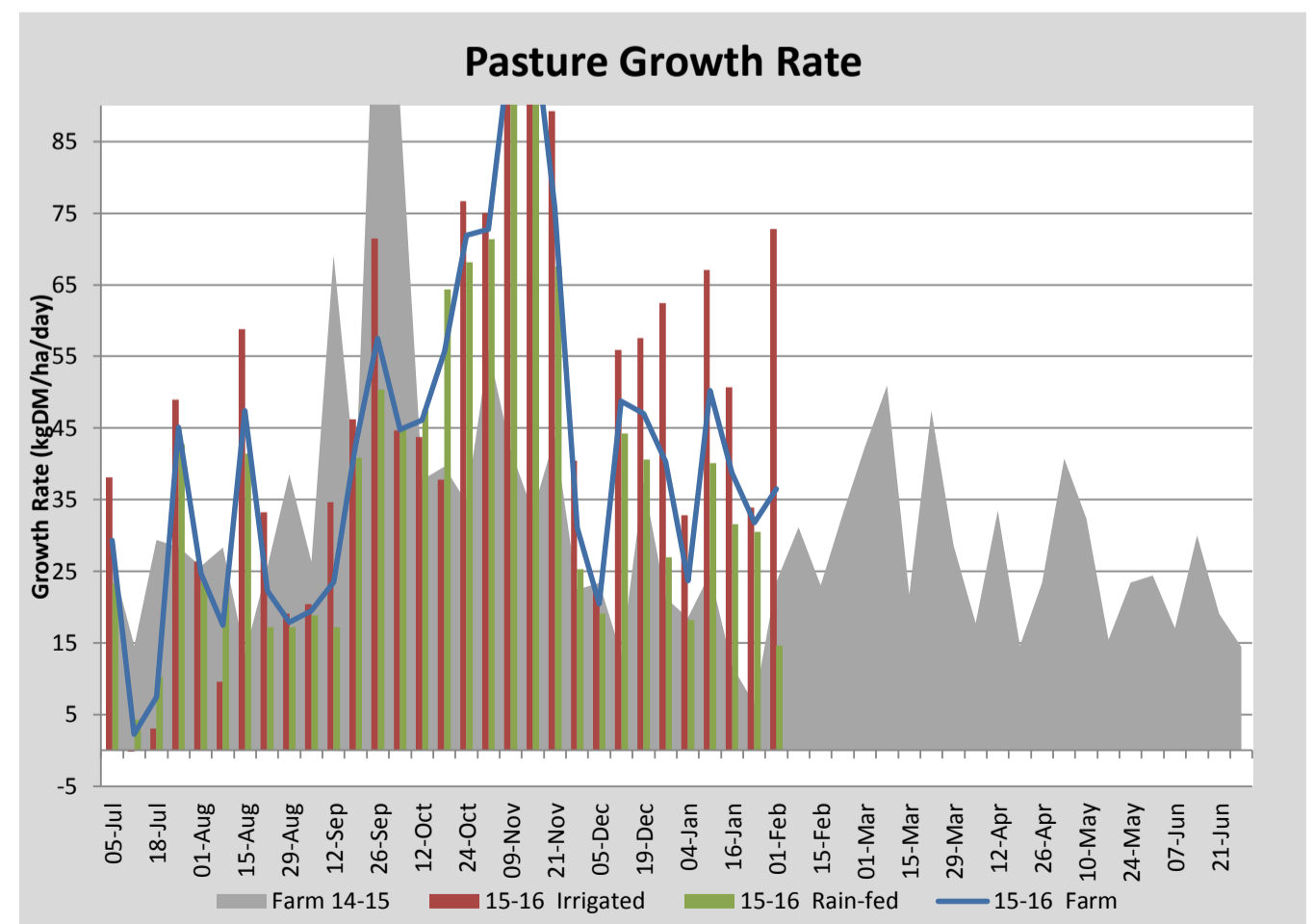
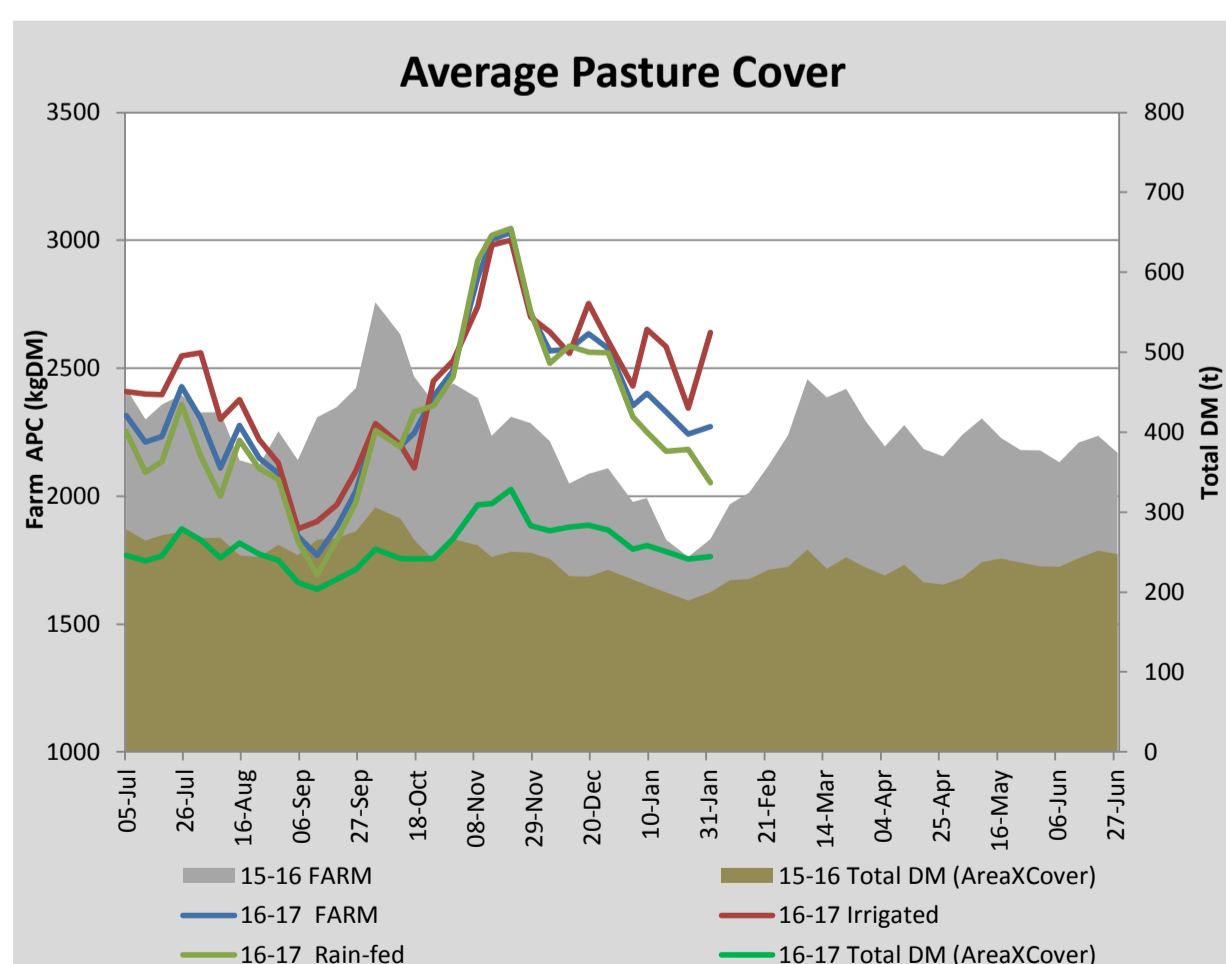
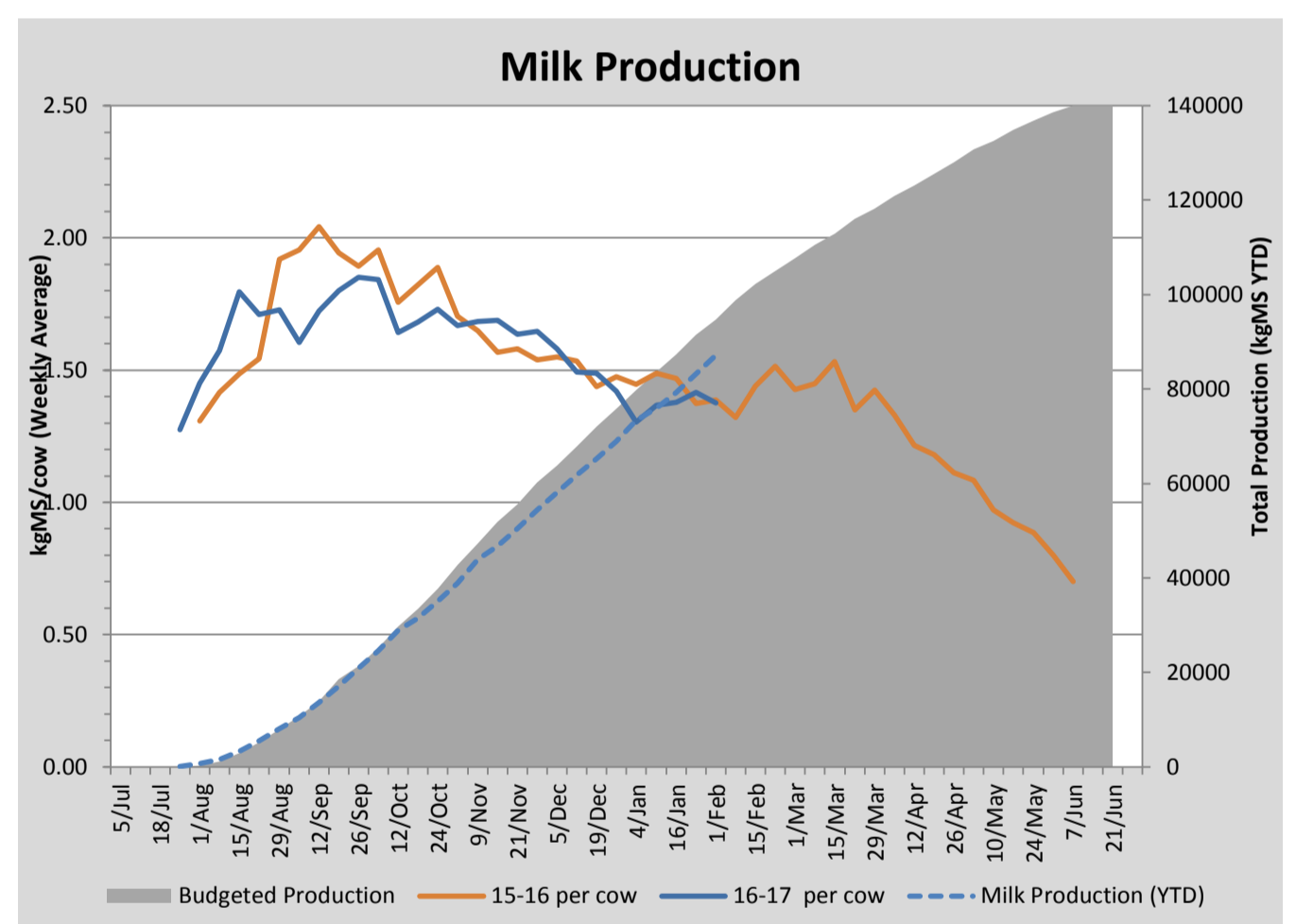
## Key Summary Points

- 1 Average pasture cover increased slightly this week to 2273 kgDM/ha, with growth rates on the irrigated paddocks improving. Growth rates on the rainfed paddocks continued to decline this week.
- 2 Cows and heifers were pregnancy checked this week. The cows are 85% in calf after 7 weeks mating period, heifers 93% in calf after 7 weeks.
- 3 The focus for the coming week is to spot spray thistles, monitor soil moisture and schedule irrigation.

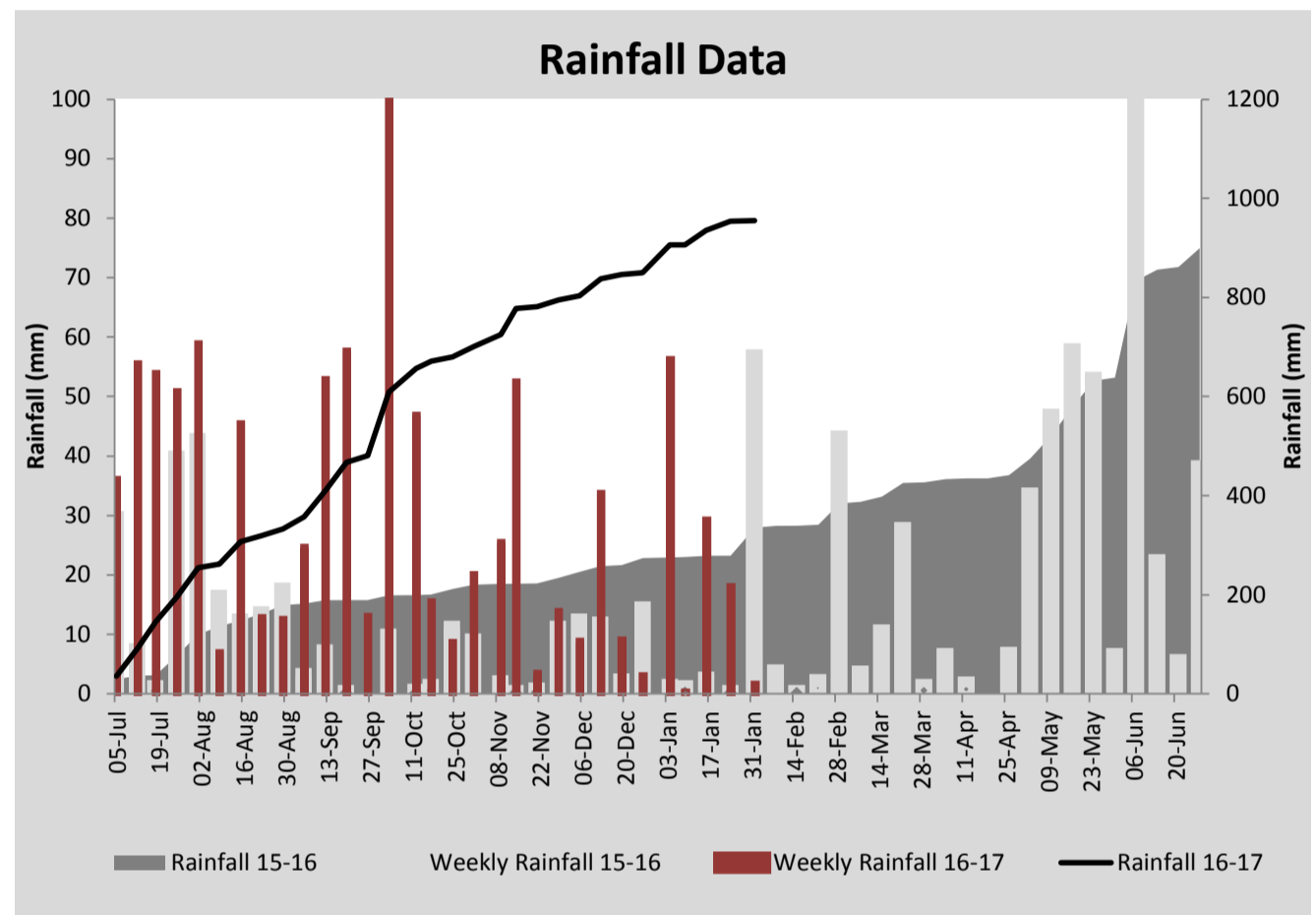
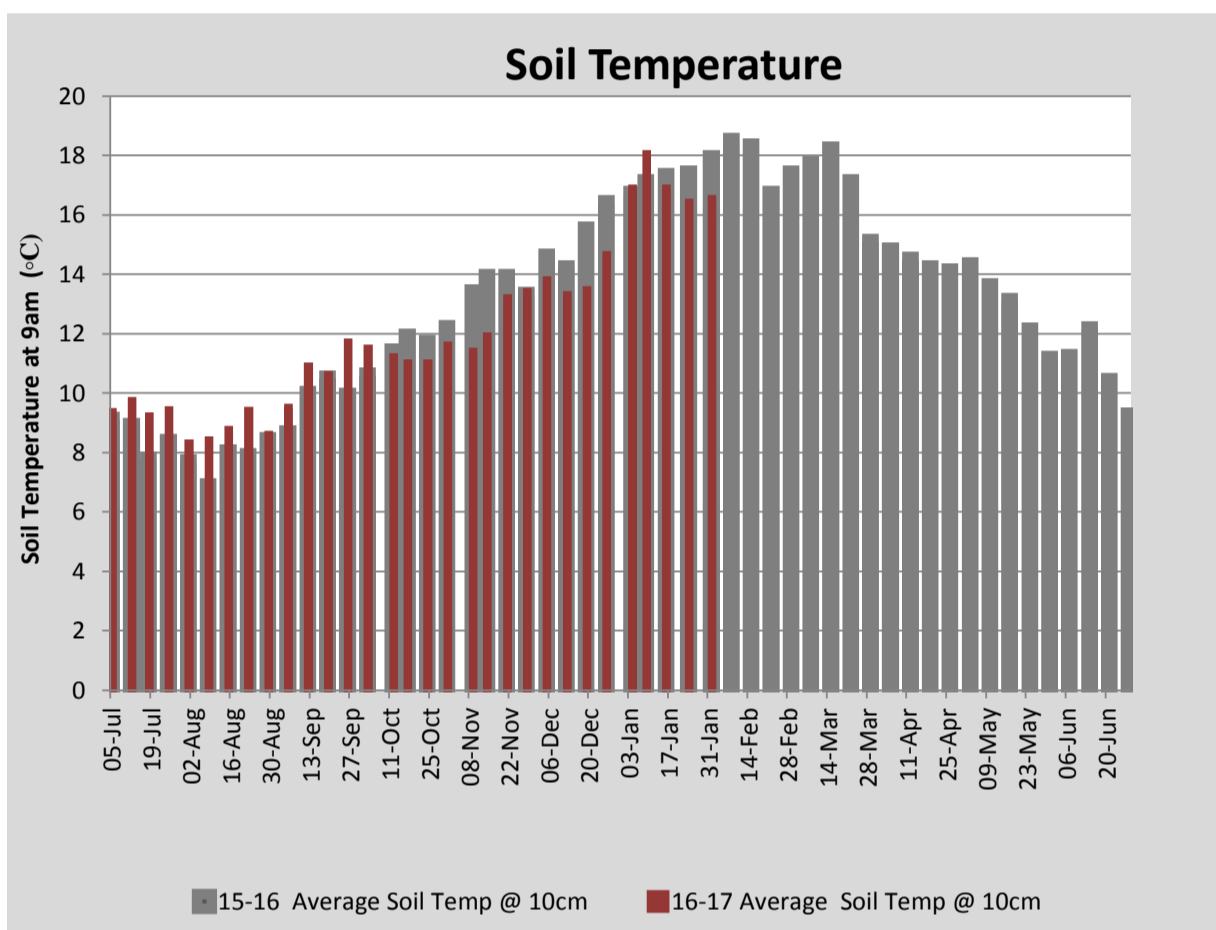
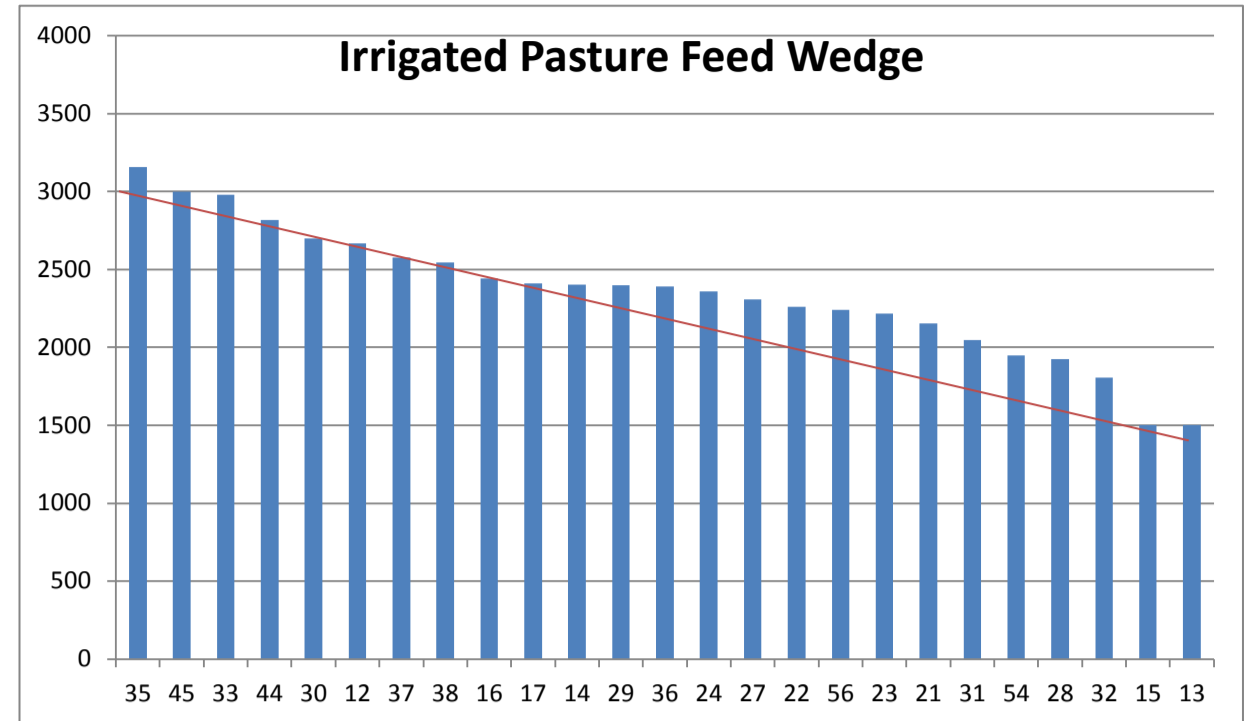
PASTURE INFORMATION	Farm			Irrigated			Rain-fed		
	Last Week	This Week	Variation	Last Week	This Week	Variation	Last Week	This Week	Variation
Grazed milking area (ha)	107.6	107.6	0.0	40.5	40.5	-0.0	67.1	67.1	0
Rotation Length (days)	39	46	7	36	31	-5	40	65	25
Grazing allocation per day (ha)	2.8	2.3	-0.5	1.1	1.3	0.2	1.7	1.0	-0.6
Average time since last grazed (days)	31	29	-1	27	27	0	33	31	-2
Leaf appearance rate (days per leaf)	10	10	0	9	9	0	10	10	0
Average Pasture Cover (kgDM/ha)	2243	2273	30	2342	2639	296	2183	2052	-131
Pasture Growth Rate (kgDM/ha/day)	32	36	5	34	73	39	31	15	-16
Post Grazing Biomass (kgDM/ha)	1500	1566	66						
Nitrogen applied YTD (kgN/ha)	147	147	0	0	0	0	0	0	0

\*Please note all pasture calculations detailed above are based on the current Grazed Milking Area

MILK PRODUCTION	Last Week	This Week	Variation
Average No. cows in milk (vat)	349	349	0
Litres per cow	17.5	16.9	-0.5
% Fat	4.64	4.56	-0.08
% Protein	3.47	3.55	0.08
MS/cow/day	1.42	1.38	-0.04
MS/ha/day	4.37	4.25	-0.13
BMCC	113,429	118,377	4,949
Average Liveweight (kg)	0	0	0
	Budget	To Date	Variation
Total Milk Production (kgMS)	94,697	87,135	92%
MS/ha YTD	831	826	99%



Last 7 days					
Milkers Diet	kg DM	MJ ME	CP (%)	NDF (%)	\$/cow
Pasture Intake	11.5	0.0	0.0	0.0	0.0
Concentrates	2.5	12.9	15.6	20.3	0.0
Silage	1.0	0.0	0.0	0.0	0.0
Grazed forage	2.0	0.0	0.0	0.0	0.0
Other feeds	0.0	0.0	0.0	0.0	0.0
<b>Total</b>	<b>17</b>				<b>0</b>
<b>Target</b>			<b>16-18</b>	<b>&gt;33</b>	<b>0</b>



Analysis			
Expected growth rate next 7 days (kgDM/ha/day)	30	Target Leaf Grazing Stage	2.5-3.0
Total Demand from Pasture (kgDM/ha/day)	38	Predicted APC 7 days time	2221
APC balance (kgDM/ha/day)	-7	Predicted APC Change	-51.1

## Discussion

Average pasture cover increased slightly this week to 2273kgDM/ha with good growth rates observed on irrigated paddocks. Growth rates on the dryland paddocks continued to decline this week to 15kgDM/ha/day. This being the case, we will start to progressively slow the rotation on the milking platform over the coming weeks, grazing more of the runoff as required. With a pasture deficit expected to continue to develop over the coming weeks we have increased the grain feeding rate to 3.2kgDM/cow/day for the coming week. Cows and heifers were pregnancy tested this week. After 7 weeks, the cows have an 85% in calf rate and the heifers 93%.

# 1 February 2017

