

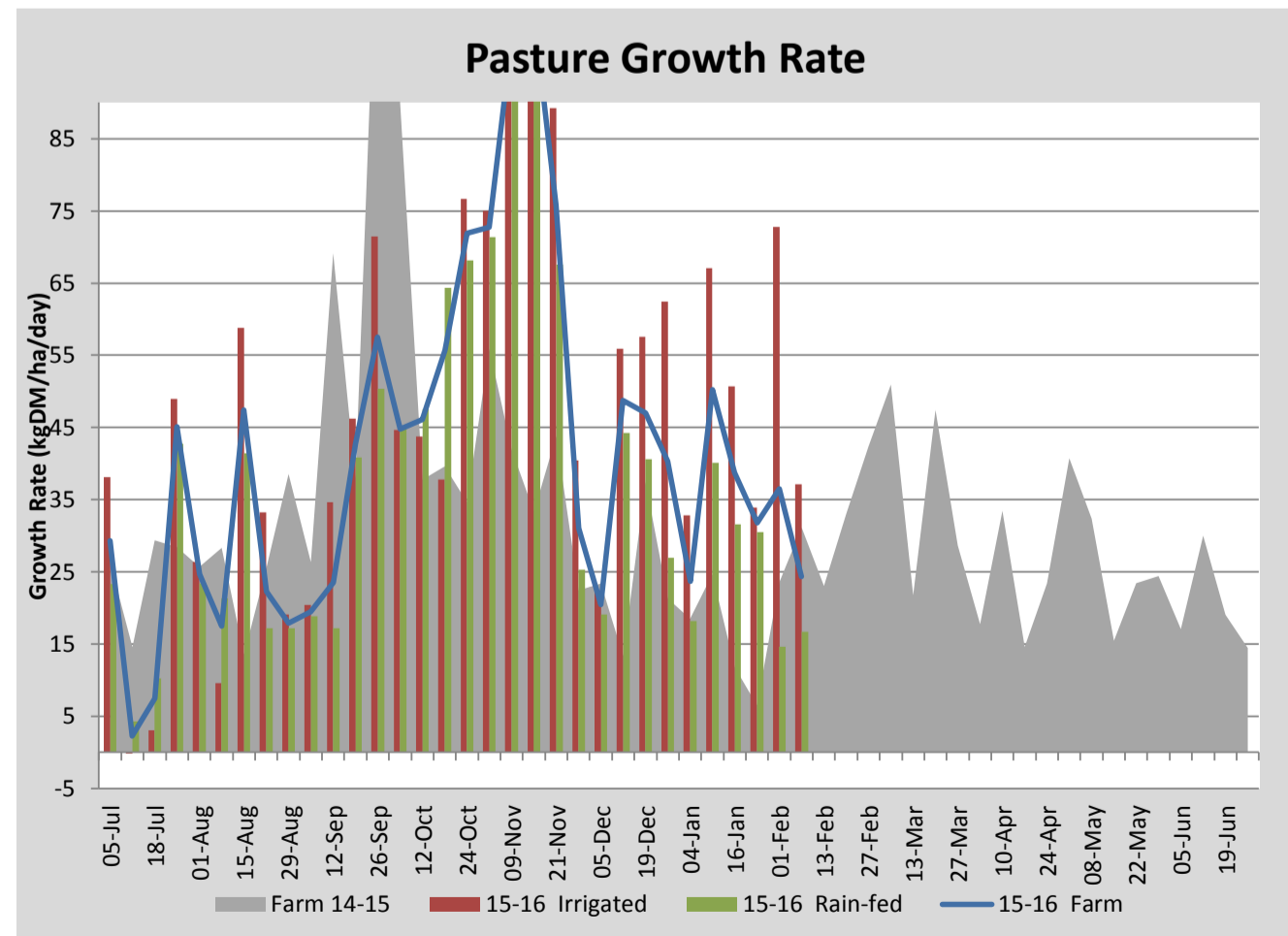
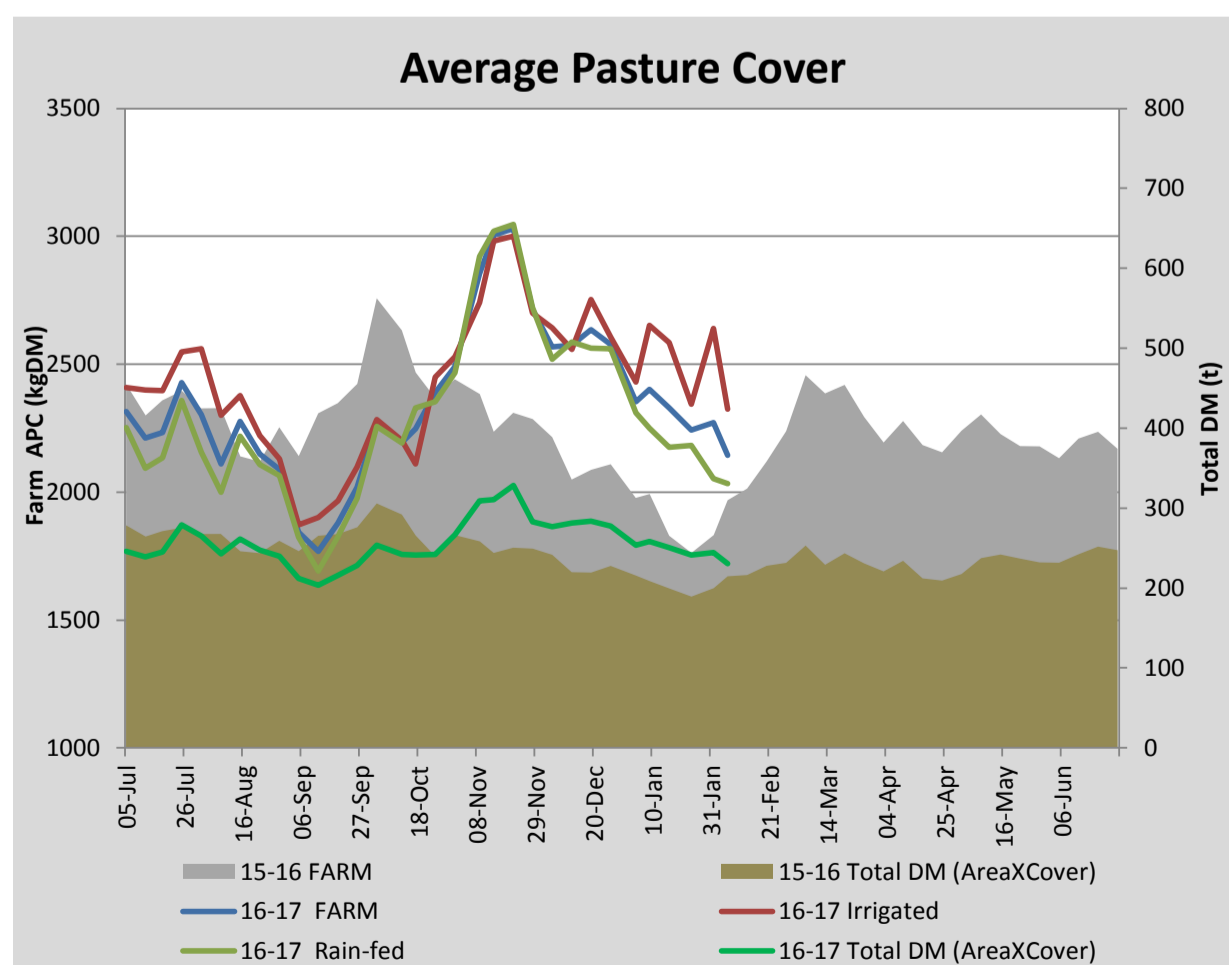
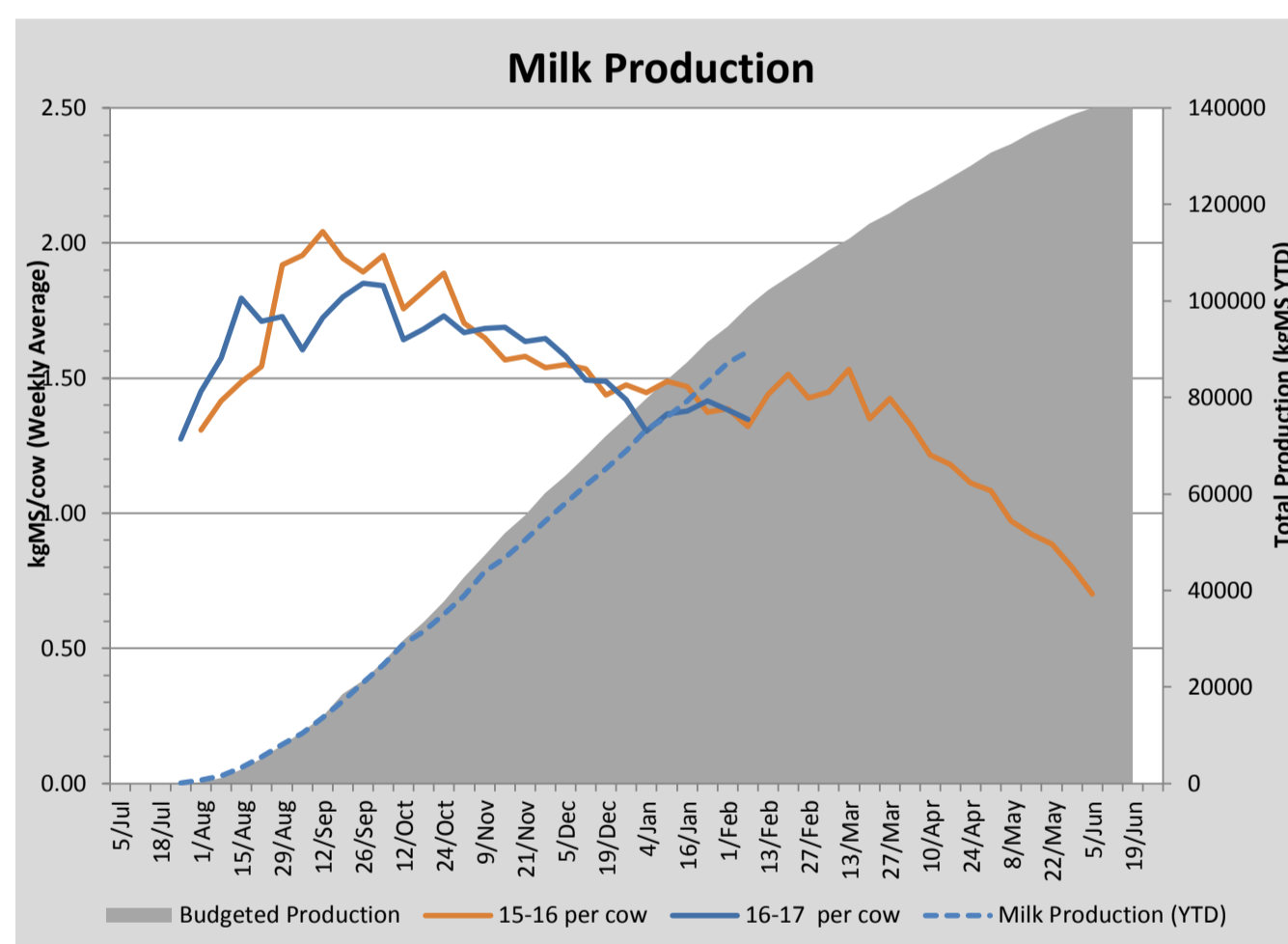
Key Summary Points

- 1 Average pasture cover decreased this week to 2143kg DM/ha with much lower growth rates recorded on the irrigated portion of the platform. Growth rates on the dryland paddocks remain steady.
- 2 Per cow milk solid production declined slightly this week to 1.32kgMS/cow/day.
- 3 The focus for the coming week is to monitor irrigation scheduling and apply nitrogen to all grazed irrigated paddocks

PASTURE INFORMATION	Farm			Irrigated			Rain-fed		
	Last Week	This Week	Variation	Last Week	This Week	Variation	Last Week	This Week	Variation
Grazed milking area (ha)	107.6	107.6	0.0	40.5	40.5	-0.0	67.1	67.1	0
Rotation Length (days)	46	48	2	31	23	-8	65	132	66
Grazing allocation per day (ha)	2.3	2.3	-0.1	1.3	1.7	0.4	1.0	0.5	-0.5
Average time since last grazed (days)	29	28	-1	27	26	-1	31	30	-1
Leaf appearance rate (days per leaf)	10	10	0	9	9	0	10	10	0
Average Pasture Cover (kgDM/ha)	2273	2143	-130	2639	2323	-315	2052	2034	-17
Pasture Growth Rate (kgDM/ha/day)	36	24	-12	73	37	-36	15	17	2
Post Grazing Biomass (kgDM/ha)	1566	1570	4						
Nitrogen applied YTD (kgN/ha)	147	147	0	0	0	0	0	0	0

*Please note all pasture calculations detailed above are based on the current Grazed Milking Area

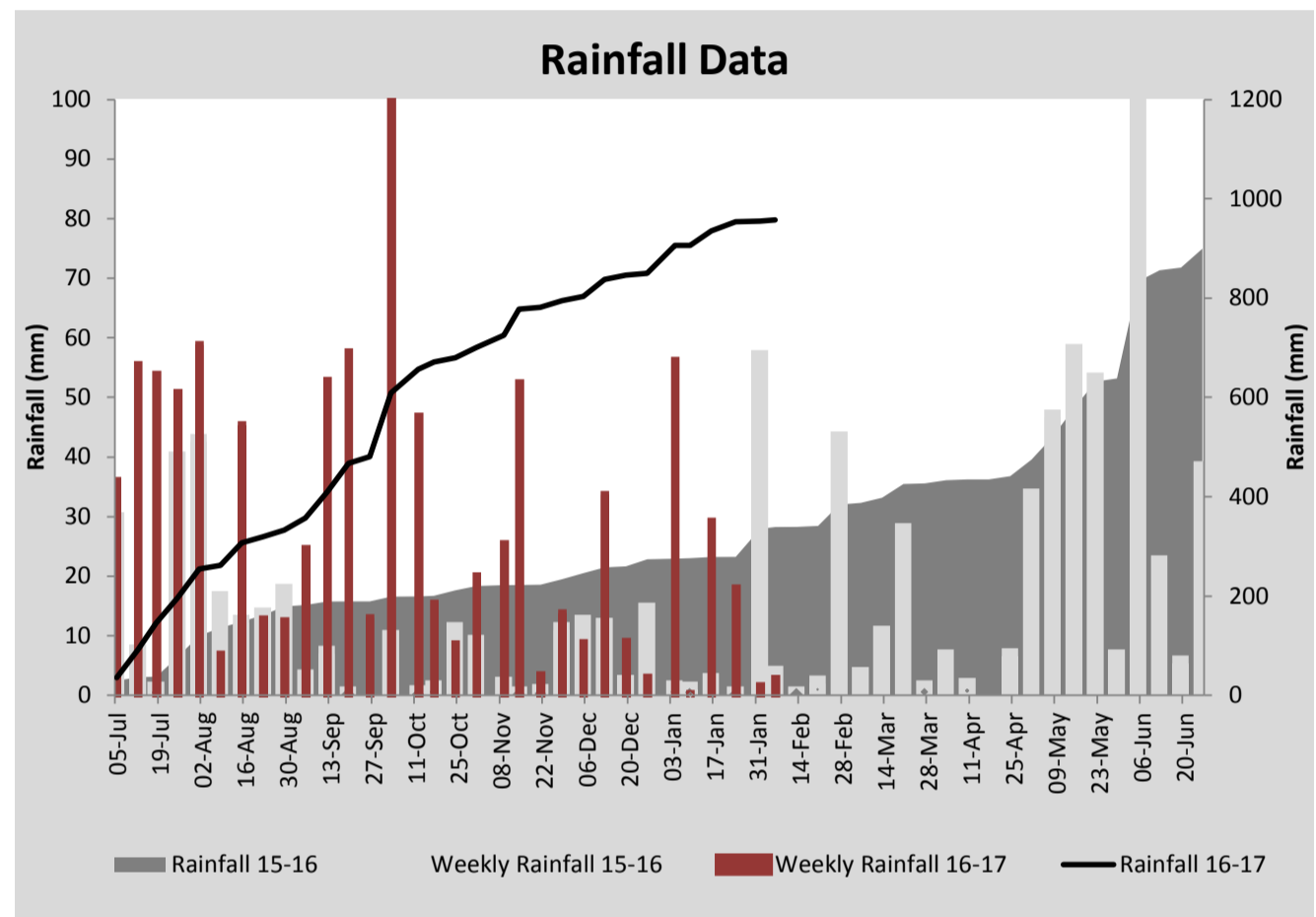
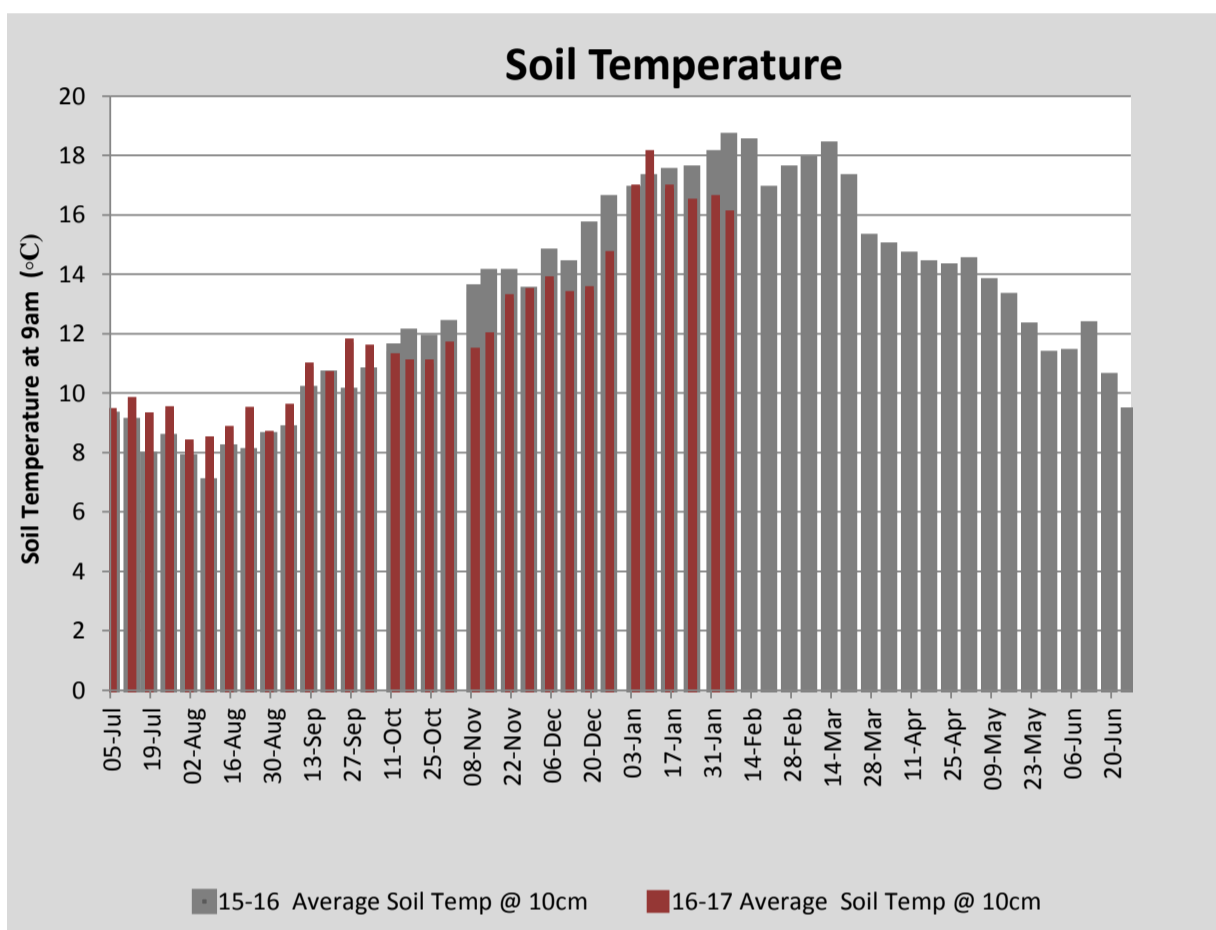
MILK PRODUCTION	Last Week	This Week	Variation
Average No. cows in milk (vat)	349	349	0
Litres per cow	16.9	16.4	-0.6
% Fat	4.62	4.71	0.09
% Protein	3.48	3.51	0.03
MS/cow/day	1.38	1.35	-0.04
MS/ha/day	4.27	4.16	-0.11
BMCC	126,571	128,143	1,571
Average Liveweight (kg)	0	0	0
	Budget	To Date	Variation
Total Milk Production (kgMS)	98,820	89,516	91%
MS/ha YTD	867	846	98%



Last 7 days					
Milkers Diet	kg DM	MJ ME	CP (%)	NDF (%)	\$/cow
Pasture Intake	10.8	0.0	0.0	0.0	0.0
Concentrates	3.5	12.9	15.6	20.3	0.0
Silage	0.8	0.0	0.0	0.0	0.0
Grazed forage	2.0	0.0	0.0	0.0	0.0
Other feeds	0.0	0.0	0.0	0.0	0.0
Total	17				0
Target			16-18	>33	0



Kale winter crop



Analysis			
Expected growth rate next 7 days (kgDM/ha/day)	27	Target Leaf Grazing Stage	2.5-3.0
Total Demand from Pasture (kgDM/ha/day)	22	Predicted APC 7 days time	2177
APC balance (kgDM/ha/day)	5	Predicted APC Change	33.9

Discussion

Average pasture cover decreased this week to 2143kgDM/ha with much lower growth rates recorded on the irrigated paddocks. Growth on the dryland paddocks held. With cover declining across the farm we will slow the rotation this coming week and apply nitrogen at 40kg/ha to all grazed irrigated paddocks. We will be increasing the grain feeding rate to 5kg/cow/day to reduce pasture demand. Calves were weighed this week with bull calves averaging 150kg (0.8kg/day growth rate) and heifers averaged 145kg (0.5kg/day). we will start supplementing with concentrate as pasture quality begins to decline. Winter crop (kale) will have a urea/boron blend spread at 200kg/ha this coming week.

6 February 2017

