

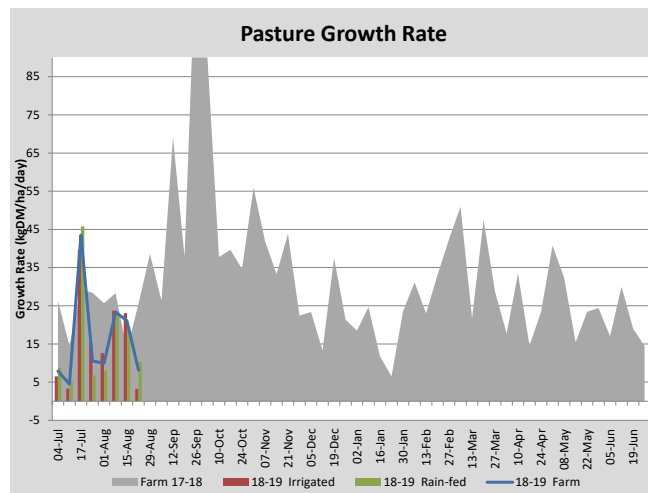
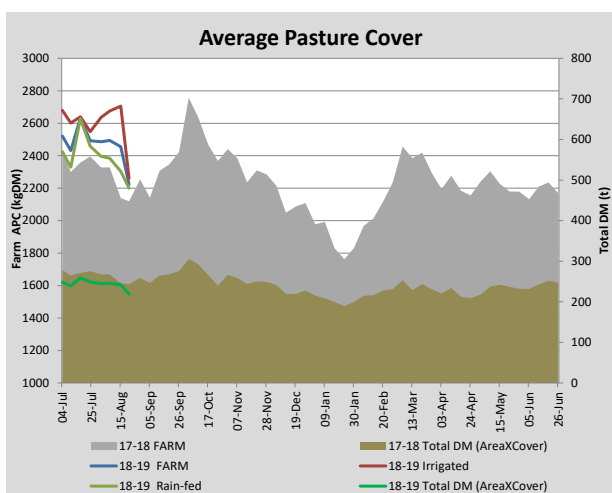
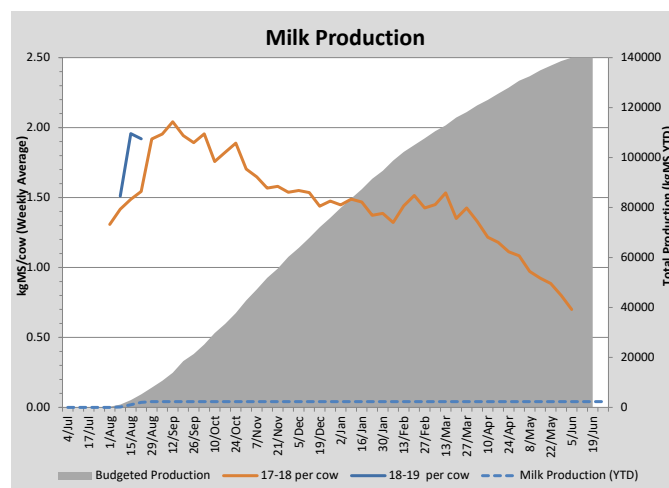
Key Summary Points

- 1 Bulk milk cell count has decreased to acceptable levels.
- 2 Average pasture cover has decreased.
- 3 Targeted feeding of smaller calves is taking place.

PASTURE INFORMATION	Farm			Irrigated			Rain-fed		
	Last Week	This Week	Variation	Last Week	This Week	Variation	Last Week	This Week	Variation
Grazed milking area (ha)	98.5	98.5	0.0	37.2	37.2	0.0	61.3	61.3	0.0
Leaf appearance rate (days per leaf)	20	20	0	20	20	0	20	20	0
Average Pasture Cover (kgDM/ha)	2456	2223	-232	2706	2262	-444	2304	2200	-104
Pasture Growth Rate (kgDM/ha/day)	21	8	-13	23	3	-20	20	10	-9
Post Grazing Biomass (kgDM/ha)	1663	1560	-103						
Nitrogen applied YTD (kgN/ha)	0	0	0	0	0	0	0	0	0

*Please note all pasture calculations detailed above are based on the current Grazed Milking Area

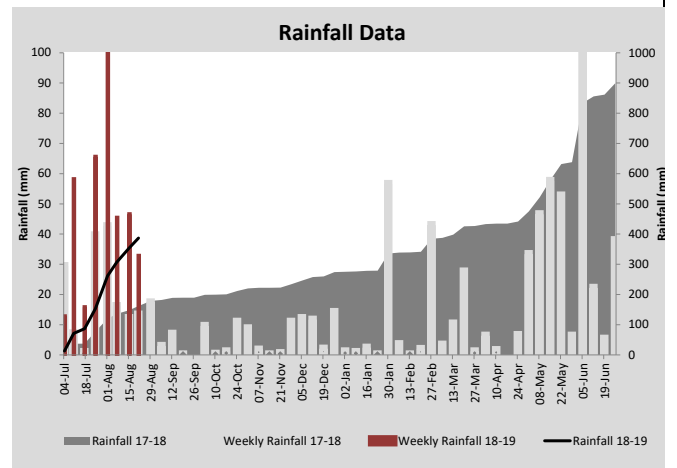
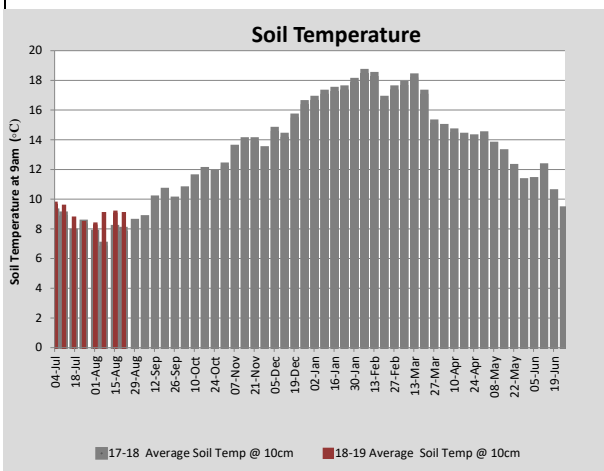
MILK PRODUCTION	Last Week	This Week	Variation
Average No. cows in milk (vat)	110	144	34
Litres per cow	23.5	24.0	0.5
% Fat	4.65	4.51	-0.14
% Protein	3.52	3.38	-0.14
MS/cow/day	1.96	1.92	-0.04
MS/ha/day	1.90	2.45	0.54
BMCC	434	195	-239
Average Liveweight (kg)	0	0	0
	Budget	To Date	Variation
Total Milk Production (kgMS)	5,211	2,039	-39%
MS/ha YTD	46		



Last 7 days					
Milkers Diet	kg DM	MJ ME	CP (%)	NDF (%)	\$/cow
Pasture Intake	16.0	13.3	22.6	45.2	0.0
Concentrates	3.0	12.5	14.0	20.0	0.0
Silage	0.0	0.0	0.0	0.0	0.0
Grazed forage	0.0	0.0	0.0	0.0	0.0
Other feeds	0.0	0.0	0.0	0.0	0.0
Total	19	250.3	21.2	41.2	0
Target		210	16-18	>33	0



The auto calf feeder shed is now full with 96 calves. The rest of the calves are being reared using conventional feeders.



Analysis			
Expected growth rate next 7 days (kgDM/ha/day)	15	Target Leaf Grazing Stage	2.5-3.0
Total Demand from Pasture (kgDM/ha/day)	29	Predicted APC 7 days time	2128
APC balance (kgDM/ha/day)	-14	Predicted APC Change	-95.2

Discussion

After a lot of work and stress, the bulk milk cell count is now consistently below 200,000 cells/ml. Lower pasture growth rates this week and the increasing number of milking cows have resulted in a significant decrease in average pasture cover. The current average pasture cover is not at a concerning level but fine weather forecast for the start of next week will allow nitrogen to be applied in order to boost pasture growth rates going forward. The auto calf feeder shed is full with 96 calves being reared in it this season. We are taking advantage of the ability of the autofeeders to feed calves on an individual basis to target extra milk for smaller calves. The average weight of the calves is 37 kg and the base level of milk being fed is 5 L/calf/day. Calves between 32 and 36 kg are being fed 6 L/calf/day and calves less than 32 kg are being fed ad lib milk. By preferentially feeding the smaller calves it is hoped they will have improved growth rates and we will have a tighter weight grouping by weaning.

21 August 2018

