

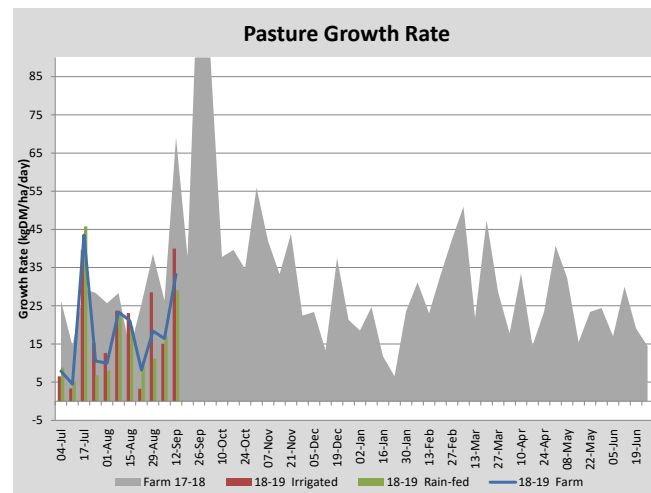
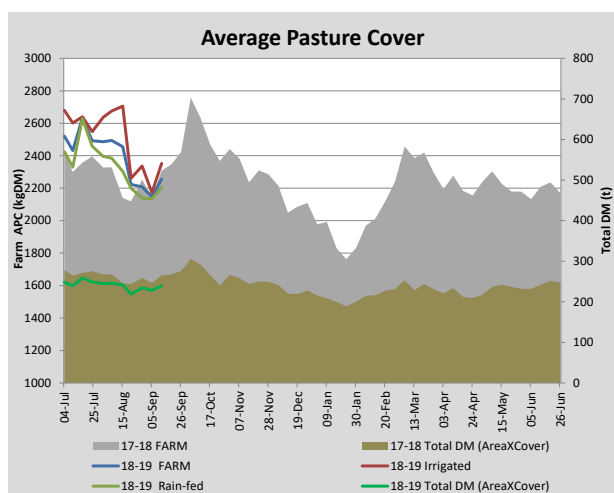
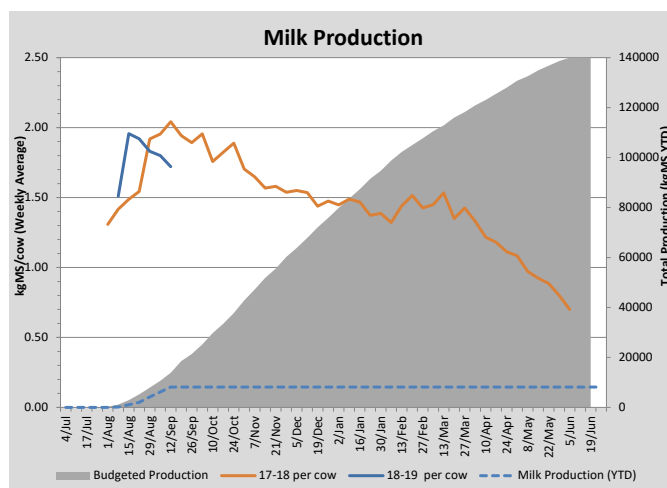
## Key Summary Points

- 1 Bulk milk cell count is below 250,000 cells/ml but there are still a large number of cows with a high cell count.
- 2 Pasture growth rates are increasing and average pasture cover has started to climb.
- 3 The average weight of the young stock is above target.

PASTURE INFORMATION	Farm			Irrigated			Rain-fed		
	Last Week	This Week	Variation	Last Week	This Week	Variation	Last Week	This Week	Variation
Grazed milking area (ha)	106.2	106.2	0.0	37.2	37.2	0.0	69.0	69.0	0.0
Leaf appearance rate (days per leaf)	17	14	-3	17	14	-3	17	14	-3
Average Pasture Cover (kgDM/ha)	2148	2255	107	2173	2352	179	2135	2203	69
Pasture Growth Rate (kgDM/ha/day)	16	33	17	15	40	25	17	29	12
Post Grazing Biomass (kgDM/ha)	1467	1498	31						
Nitrogen applied YTD (kgN/ha)	14	16	2	2	2	-0	4	2	-1

\*Please note all pasture calculations detailed above are based on the current Grazed Milking Area

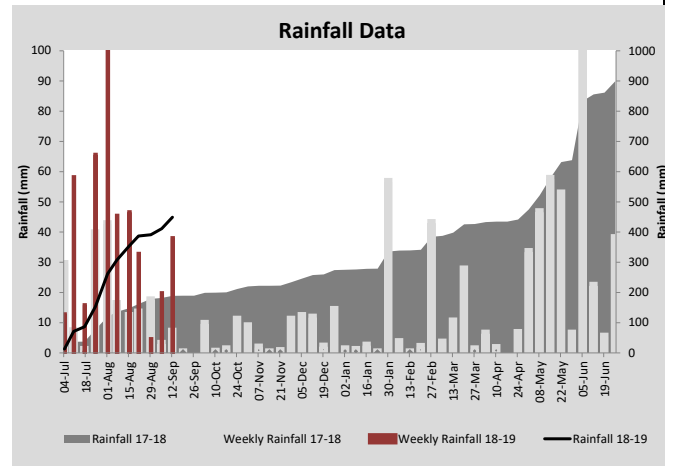
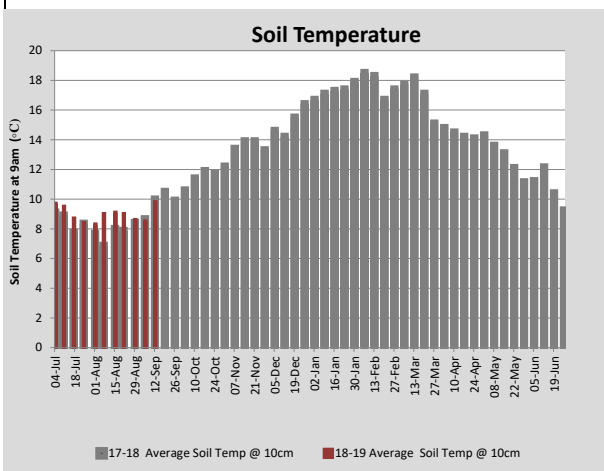
MILK PRODUCTION	Last Week	This Week	Variation
Average No. cows in milk (vat)	215	230	15
Litres per cow	24.0	23.3	-0.7
% Fat	4.33	4.29	-0.04
% Protein	3.08	3.00	-0.08
MS/cow/day	1.80	1.72	-0.08
MS/ha/day	3.42	3.50	0.08
BMCC	225	188	-37
Average Liveweight (kg)	0	0	0
	Budget	To Date	Variation
Total Milk Production (kgMS)	13,868	8,146	-59%
MS/ha YTD	122		



Last 7 days					
Milkers Diet	kg DM	MJ ME	CP (%)	NDF (%)	\$/cow
Pasture Intake	12.0	13.3	22.6	45.2	0.0
Concentrates	5.0	12.5	14.0	20.0	0.0
Silage	2.0	10.0	0.0	0.0	0.0
Grazed forage	0.0	0.0	0.0	0.0	0.0
Other feeds	0.0	0.0	0.0	0.0	0.0
<b>Total</b>	<b>19</b>	<b>242.1</b>	<b>18.0</b>	<b>33.8</b>	<b>0</b>
<b>Target</b>		<b>210</b>	<b>16-18</b>	<b>&gt;33</b>	<b>0</b>



The young stock were weighed this week and are ahead of target.



Analysis			
Expected growth rate next 7 days (kgDM/ha/day)	30	Target Leaf Grazing Stage	2.5-3.0
Total Demand from Pasture (kgDM/ha/day)	7	Predicted APC 7 days time	2415
APC balance (kgDM/ha/day)	23	Predicted APC Change	159.3

## Discussion

The bulk milk cell count has been consistently under 250,000 cells/ml. The herd test this week has shown the percentage of the herd with an individual cell count higher than 250,000 cells/ml has decreased from 40% to 20% but this is still relatively high. Some of these cows are still being kept in the colostrum herd with the milk being fed to calves. The young stock were weighed during the week. While the average growth rate of the R2s for the month was a bit low (0.4 kg/day) their average weight is 290 kg which is above the target of 265 kg (for a mature weight of 500 kg). In this year's calves, the strategy of ad lib feeding the smaller calves is working well as they have grown at 0.9 kg/day compared to 0.7 kg/day for the calves being fed 5 litres/day. Next week, 15 ha (6 ha on the milking area and 9 ha on the run-off) that had winter crops will be resown to perennial ryegrass. Pre-mating heat detection of the milking herd will start next week to identify any cows that aren't cycling. In addition, cows that have been calved for greater than four weeks will have a metricheck to identify any with uterine infections.

# 12 September 2018

