

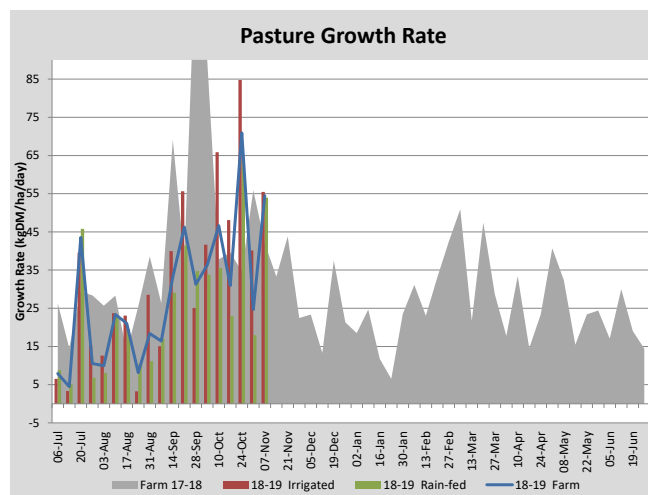
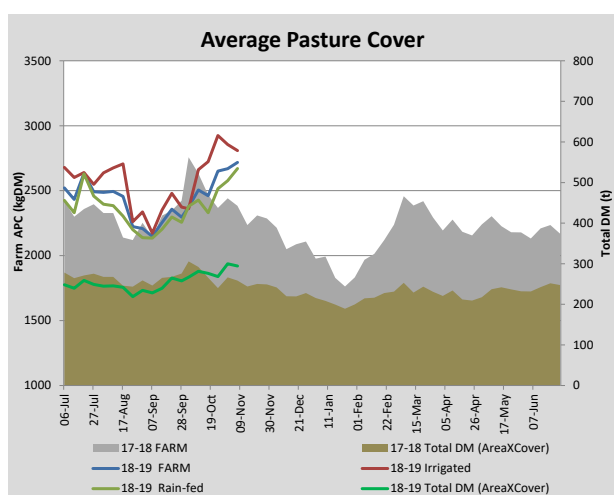
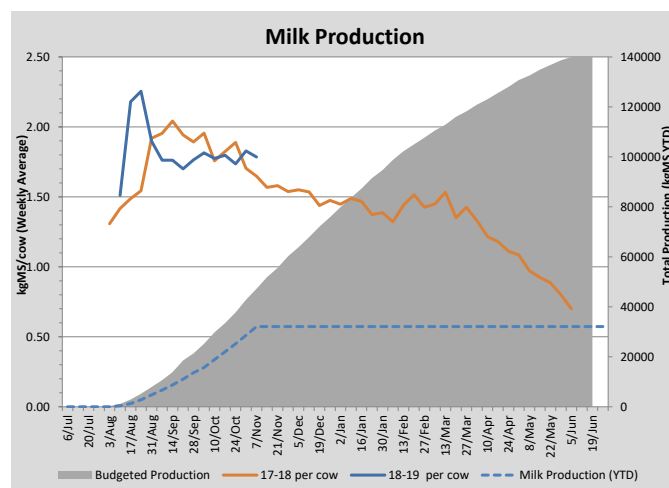
Key Summary Points

1	Urea continues to be applied following the cows.
2	
3	

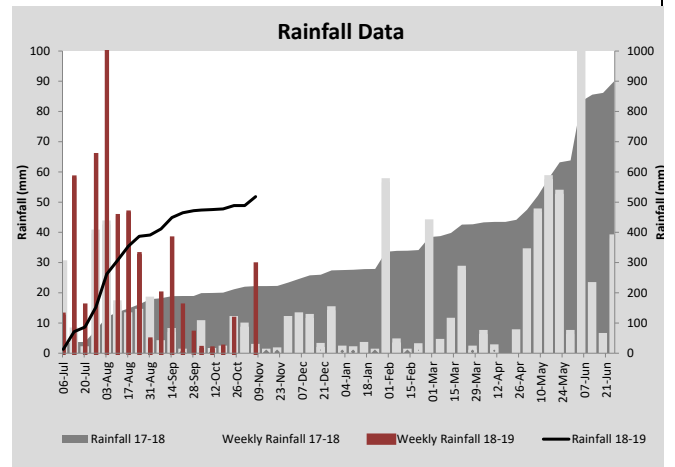
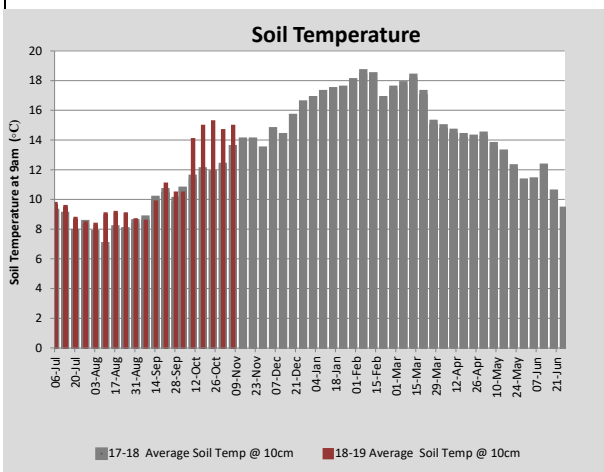
PASTURE INFORMATION	Farm			Irrigated			Rain-fed		
	Last Week	This Week	Variation	Last Week	This Week	Variation	Last Week	This Week	Variation
Grazed milking area (ha)	101.3	112.3	11.0	37.2	37.2	0.0	64.1	75.2	11.0
Leaf appearance rate (days per leaf)	10	12	2	7	8	1	13	14	1
Average Pasture Cover (kgDM/ha)	2651	2669	19	2924	2855	-70	2516	2577	62
Pasture Growth Rate (kgDM/ha/day)	71	25	-46	85	40	-45	64	18	-46
Post Grazing Biomass (kgDM/ha)	1575	1841	266						
Nitrogen applied YTD (kgN/ha)	38	41	3	0	10	10	0	0	0

*Please note all pasture calculations detailed above are based on the current Grazed Milking Area

MILK PRODUCTION	Last Week	This Week	Variation
Average No. cows in milk (vat)	316	317	1
Litres per cow	23.9	24.1	0.1
% Fat	4.07	4.31	0.23
% Protein	3.14	3.36	0.22
MS/cow/day	1.74	1.83	0.09
MS/ha/day	4.85	5.13	0.28
BMCC	228	223	-5
Average Liveweight (kg)	0	0	0
	Budget	To Date	Variation
Total Milk Production (kgMS)	42,795	28,579	-67%
MS/ha YTD	375		



Last 7 days					
Milkers Diet	kg DM	MJ ME	CP (%)	NDF (%)	\$/cow
Pasture Intake	17.0	11.6	20.3	49.4	0.0
Concentrates	2.0	12.5	14.0	20.0	0.0
Silage	0.0	0.0	0.0	0.0	0.0
Grazed forage	0.0	0.0	0.0	0.0	0.0
Other feeds	0.0	0.0	0.0	0.0	0.0
Total	19	222.2	19.6	46.3	0
Target		210	16-18	>33	0



Analysis			
Expected growth rate next 7 days (kgDM/ha/day)	45	Target Leaf Grazing Stage	2.5-3.0
Total Demand from Pasture (kgDM/ha/day)	54	Predicted APC 7 days time	2603
APC balance (kgDM/ha/day)	-9	Predicted APC Change	-66.2

Discussion

31 October 2018

