

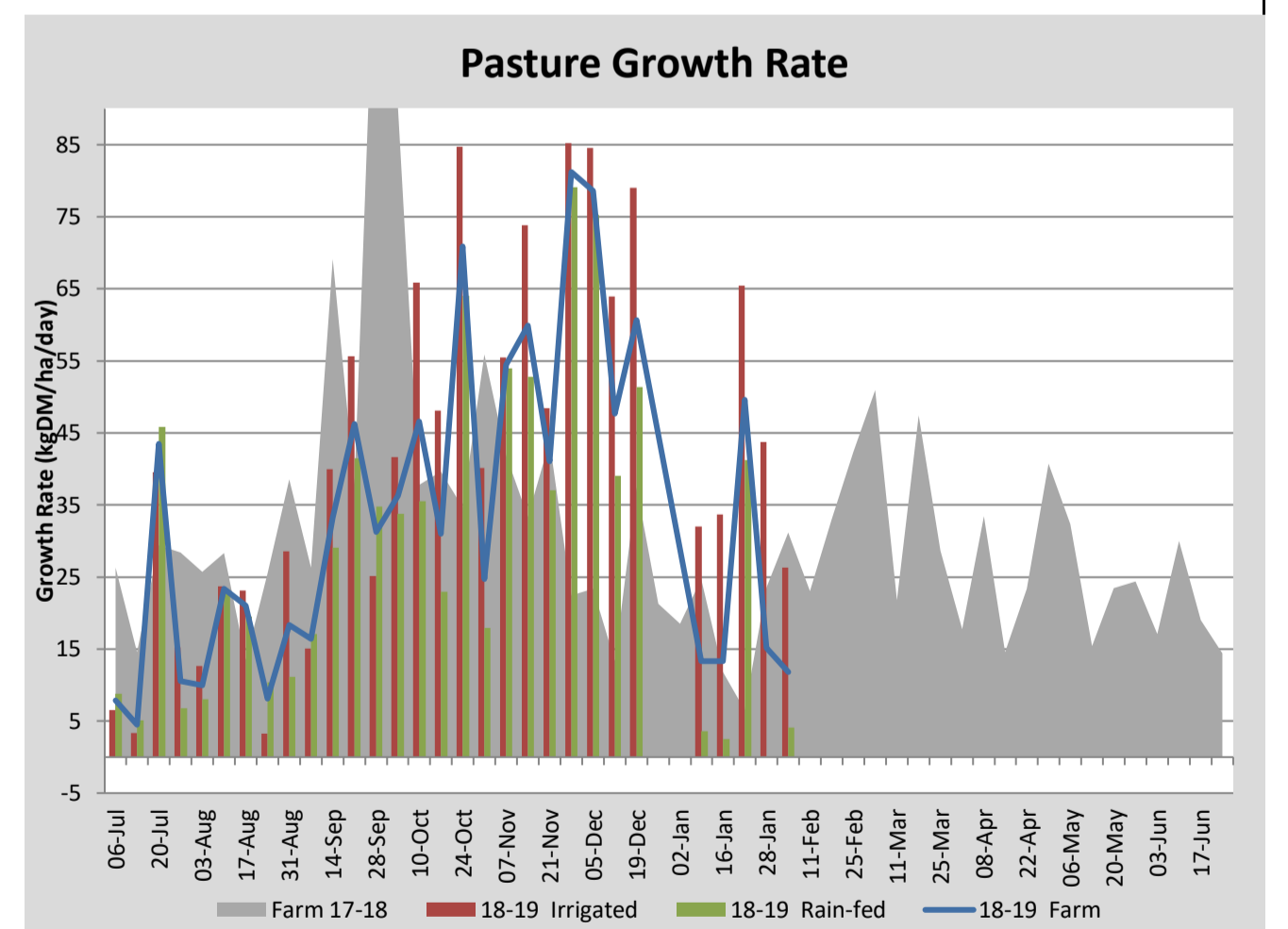
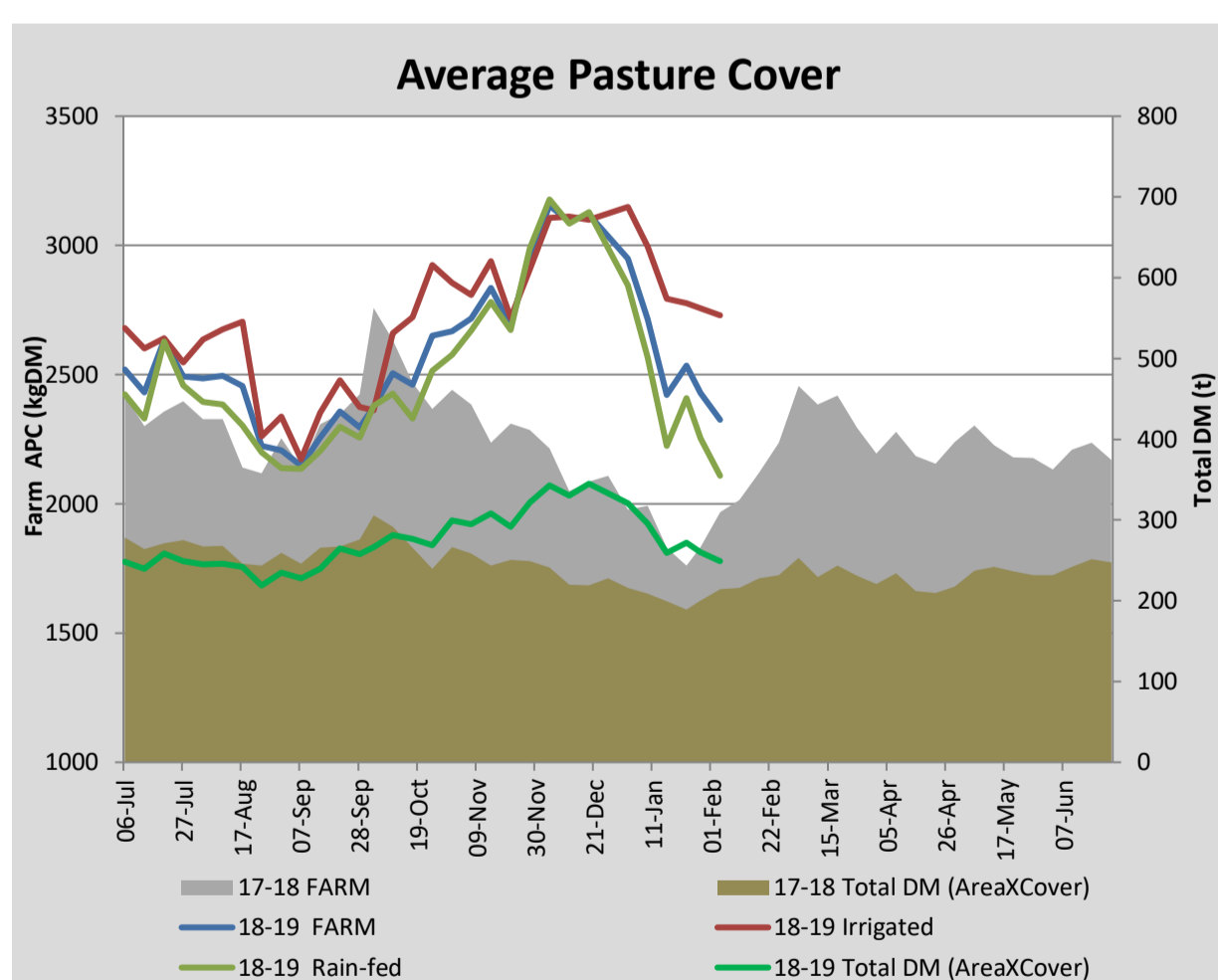
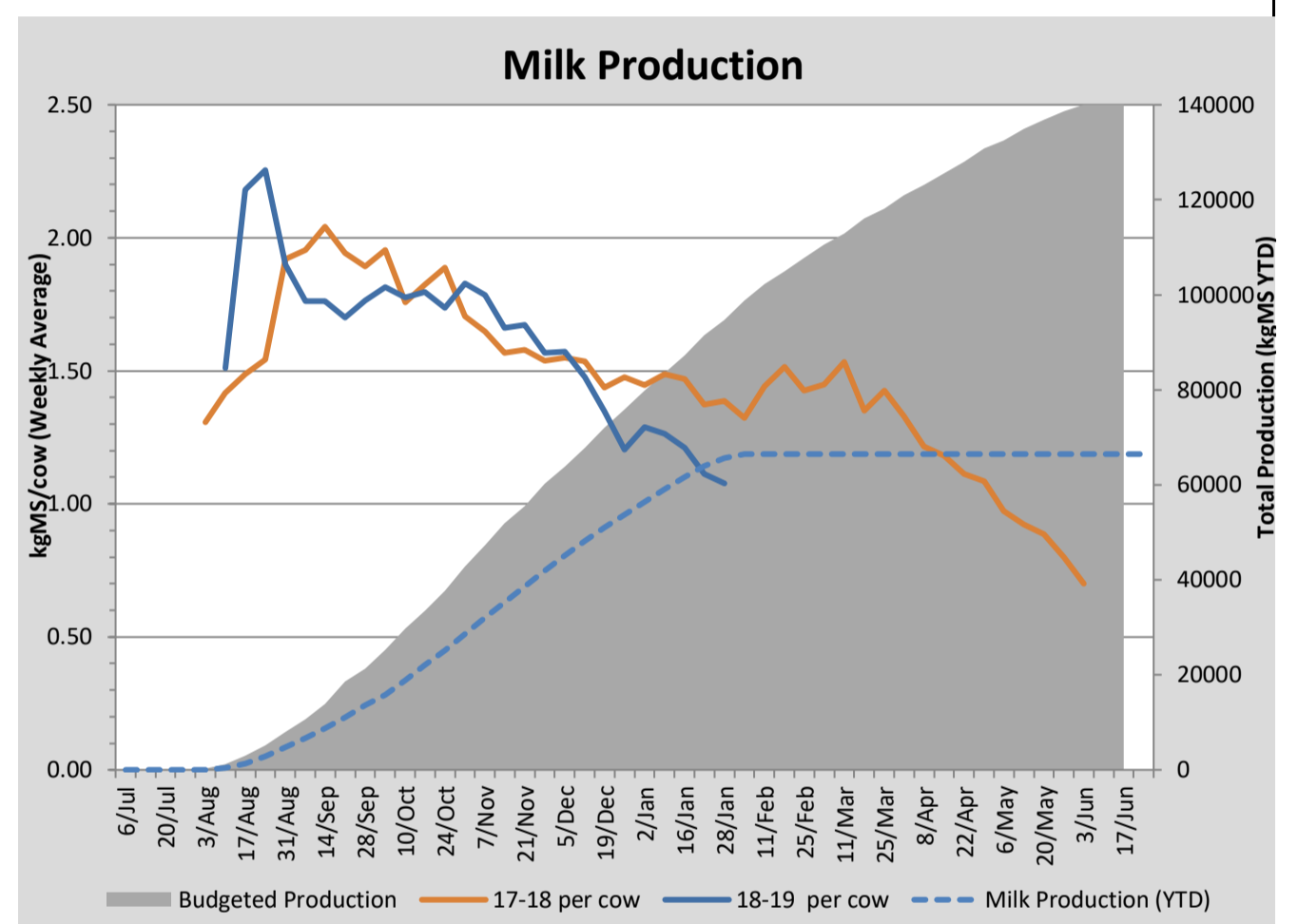
Key Summary Points

1	Feeding of turnip crops has started.
2	Water in dams is very low.
3	An issue has been identified (and fixed) with the grain feeding system.

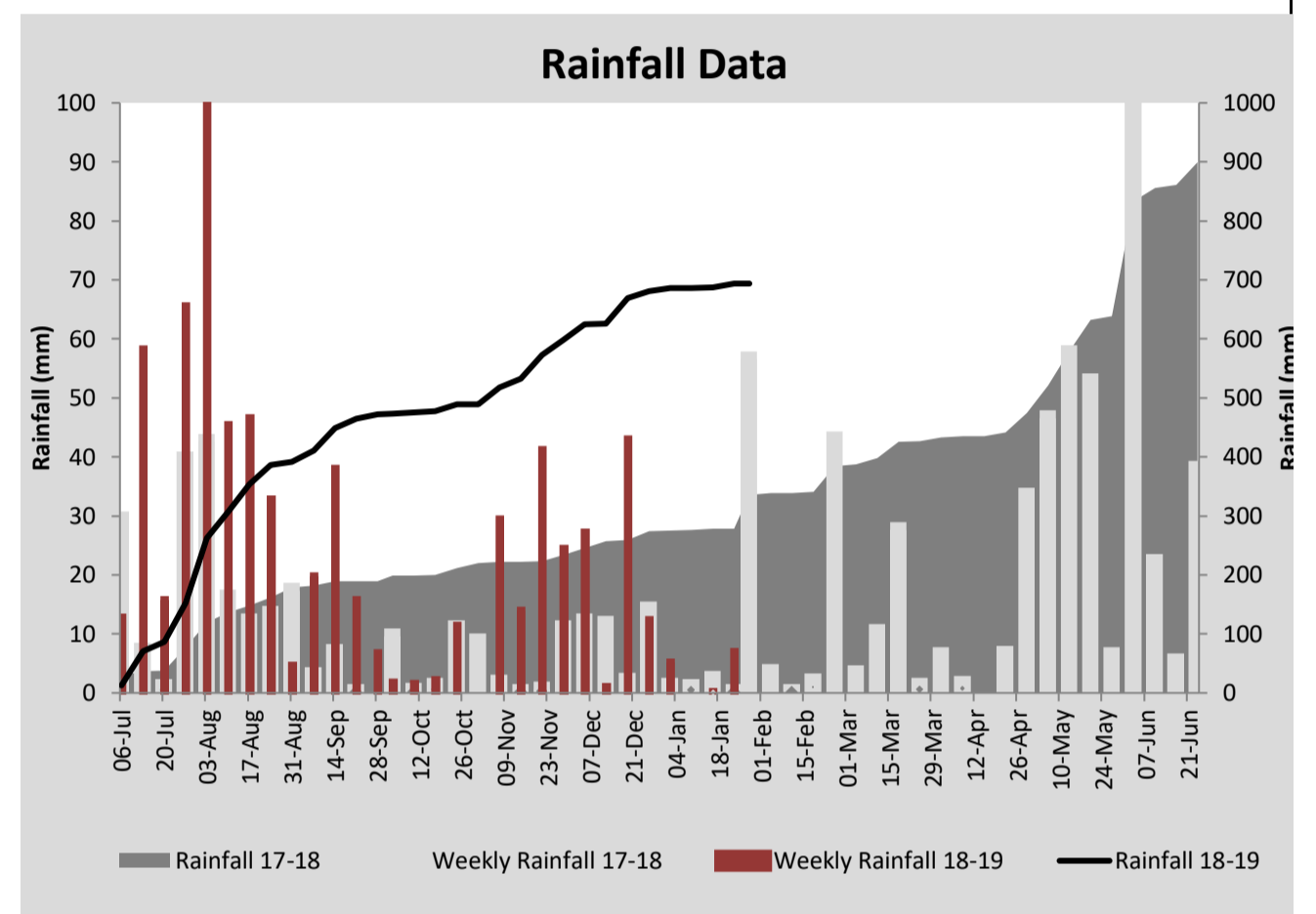
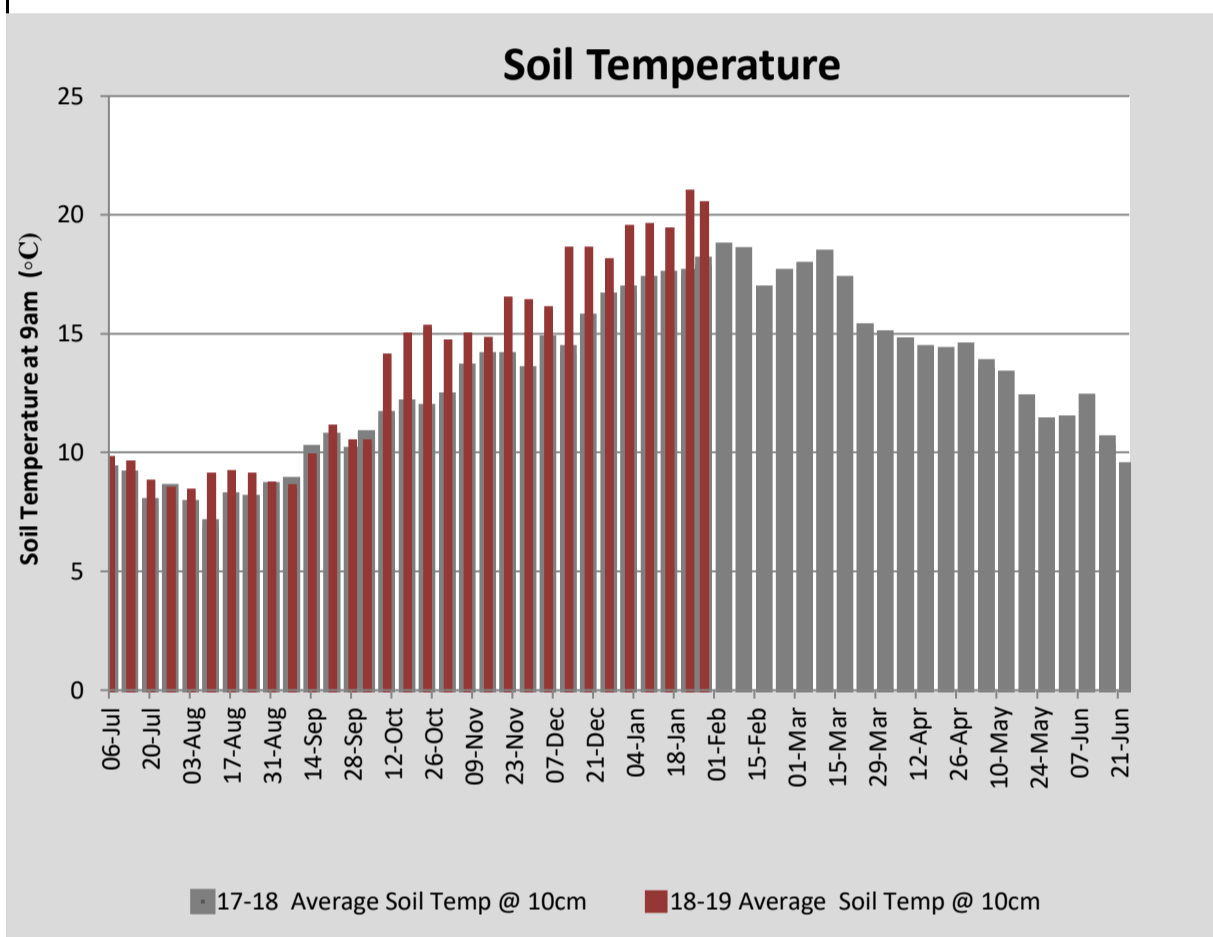
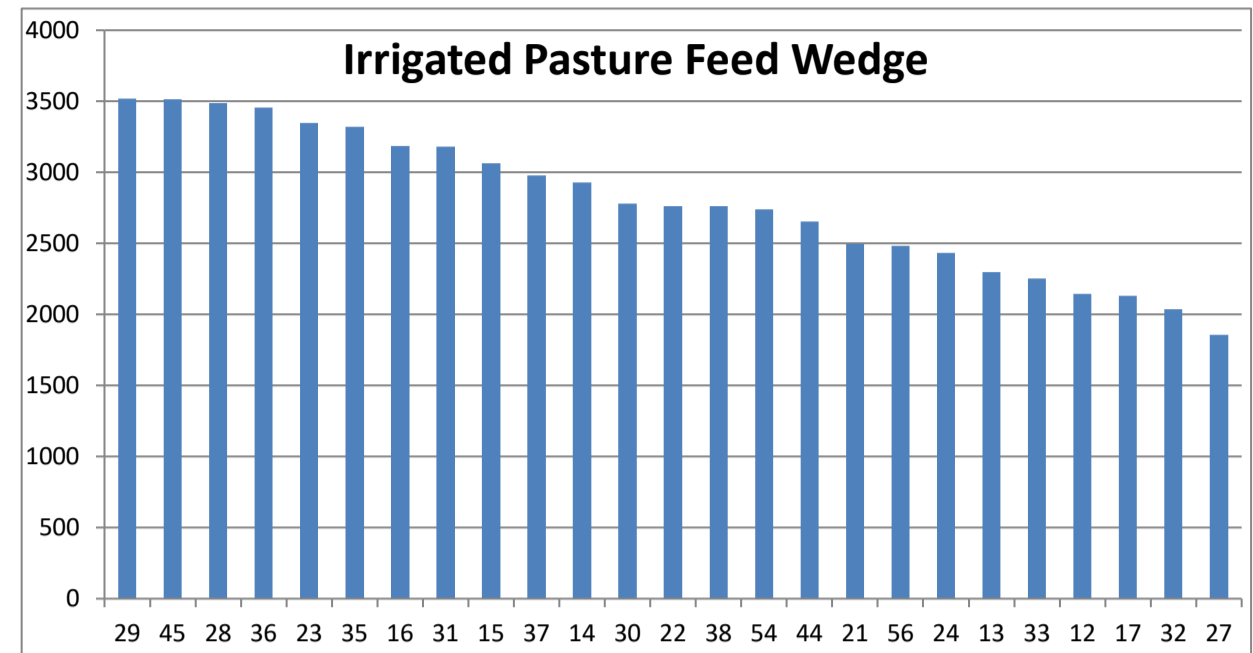
PASTURE INFORMATION	Farm			Irrigated			Rain-fed		
	Last Week	This Week	Variation	Last Week	This Week	Variation	Last Week	This Week	Variation
Grazed milking area (ha)	107.1	107.1	0.0	37.2	37.2	0.0	70.0	70.0	0.0
Leaf appearance rate (days per leaf)	18	16	-2	9	8	-1	23	20	-3
Average Pasture Cover (kgDM/ha)	2536	2428	-108	2776	2756	-20	2409	2254	-155
Pasture Growth Rate (kgDM/ha/day)	50	15	-34	65	44	-22	41	0	-41
Post Grazing Biomass (kgDM/ha)	1750	1647	-103						
Nitrogen applied YTD (kgN/ha)	64	68	4	9	5	-4	1	3	3

*Please note all pasture calculations detailed above are based on the current Grazed Milking Area

MILK PRODUCTION	Last Week	This Week	Variation
Average No. cows in milk (vat)	302	299	-3
Litres per cow	14.6	14.1	-0.5
% Fat	4.41	4.43	0.02
% Protein	3.20	3.25	0.05
MS/cow/day	1.11	1.08	-0.03
MS/ha/day	2.97	2.85	-0.12
BMCC	185	166	-19
	Budget	To Date	
Total Milk Production (kgMS)	94,697	65,570	
MS/ha YTD	831		



Last 7 days					
Milkers Diet	kg DM	MJ ME	CP (%)	NDF (%)	\$/cow
Pasture Intake	10.4	11.6	20.3	49.4	0.0
Concentrates	2.5	12.5	14.0	20.0	0.0
Silage	3.6	10.1	13.8	41.0	0.0
Grazed forage	1.5	12.0	15.0	27.0	0.0
Other feeds	0.0	0.0	0.0	0.0	0.0
Total	18	206.3	17.7	41.8	0
Target	210	16-18	>33	0	



Analysis			
Expected growth rate next 7 days (kgDM/ha/day)	11	Target Leaf Grazing Stage	2.5-3.0
Total Demand from Pasture (kgDM/ha/day)	33	Predicted APC 7 days time	2273
APC balance (kgDM/ha/day)	-22	Predicted APC Change	-155.3

Discussion

The cows diet is now being supplemented with turnips in addition to silage and pellets. The herd is being introduced to the turnips gradually - starting at 1 kg DM/cow/day increasing to the target intake of 4 kg DM/cow/day over two weeks. In the report last week we mentioned that milk production was lower than anticipated. This week a check of the grain feeding system identified the cows were only being fed 1.5 kg DM/cow/day rather than the planned 5 kg DM/cow/day. It is uncertain how long the cows have not been receiving the target amount of pellets but we think it has possibly been 3-4 weeks. This has obviously had an impact on milk production. The pellets are being increased back to 5 kg DM/cow/day over the next week. Water levels in the dam are now quite low - it is estimated there is only 2.5-3 weeks water remaining. The more labour intensive k-line irrigation system has been turned-off so the rest of the irrigated area can continue to be fully irrigated.

28 January 2019

